

Office Leasing Opportunity  
7035 Orchard Lake Road, West Bloomfield, Michigan  
Orchard Lake Road between 14 Mile Rd and Maple Rd  
1,000 sf and 2,000 sf office lease opportunities

THE  
SURNOW  
COMPANY



J. ALEXANDER'S  
RESTAURANT

WHOLE  
FOODS  
MARKET

Tanera  
BREAD



ORCHARD LAKE ROAD

7035 Orchard Lake Road, West Bloomfield, Michigan

THE  
SURNOW  
COMPANY



7035 Orchard Lake Road, West Bloomfield, Michigan



7035 Orchard Lake Road, West Bloomfield, Michigan



7035 Orchard Lake Road, West Bloomfield, Michigan

7  
0  
3  
5



Viewpoint  
Psychology & Wellness

**GREA**

WWW.GREA.COM



CRATUS MEDICAL  
— VITALITY INSTITUTE —

ANCHOR SIGNAGE



# IN THE HEART OF METROPOLITAN DETROIT, MICHIGAN

To 7035 Orchard Lake Road:

Detroit Metro  
International Airport – 34 min

Oakland County  
International Airport  
(Private) – 27 min

Campus Martius Park  
Downtown Detroit – 27 min



7035 Orchard Lake Road, West Bloomfield, Michigan

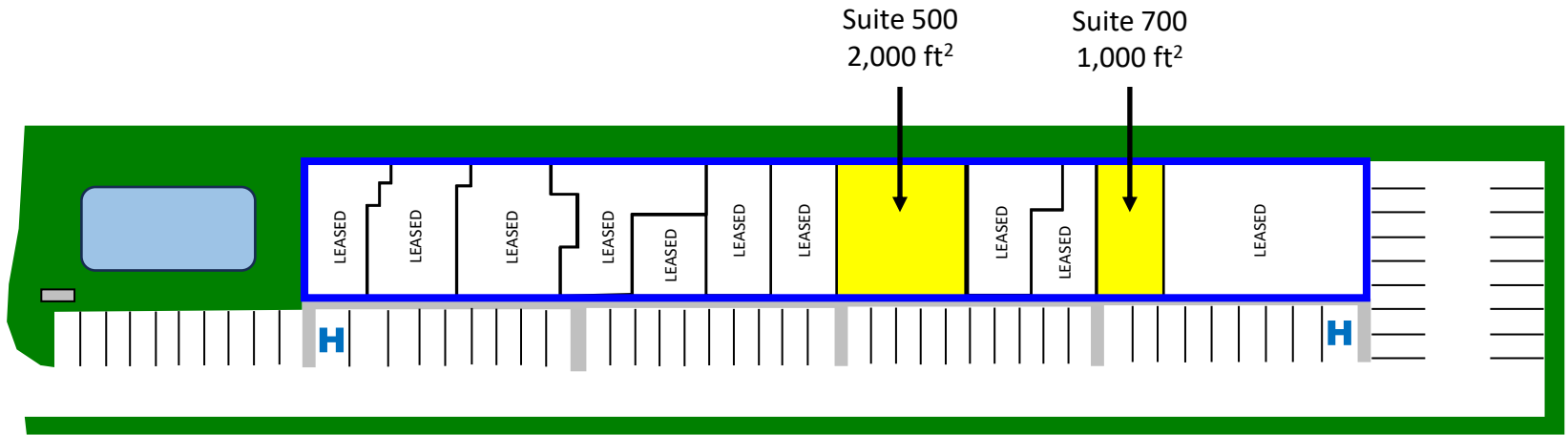
# AERIAL



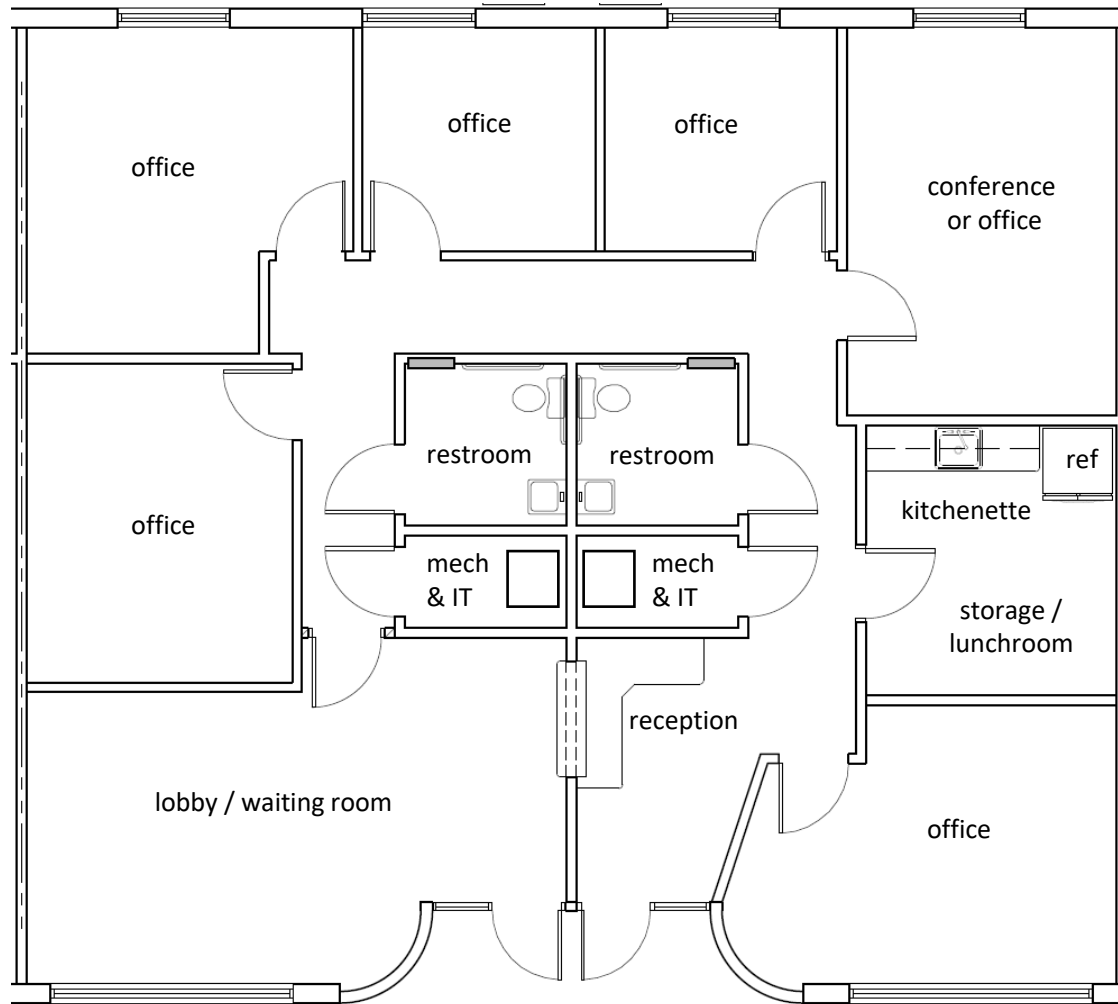
7035 Orchard Lake Road, West Bloomfield, Michigan

# SITE PLAN

ORCHARD LAKE ROAD



# FLOOR PLAN – SUITE 500



Suite 500  
2,000 ft<sup>2</sup>



7035 Orchard Lake Road, West Bloomfield, Michigan – Suite 500



7035 Orchard Lake Road, West Bloomfield, Michigan – Suite 500



7035 Orchard Lake Road, West Bloomfield, Michigan – Suite 500



7035 Orchard Lake Road, West Bloomfield, Michigan – Suite 500

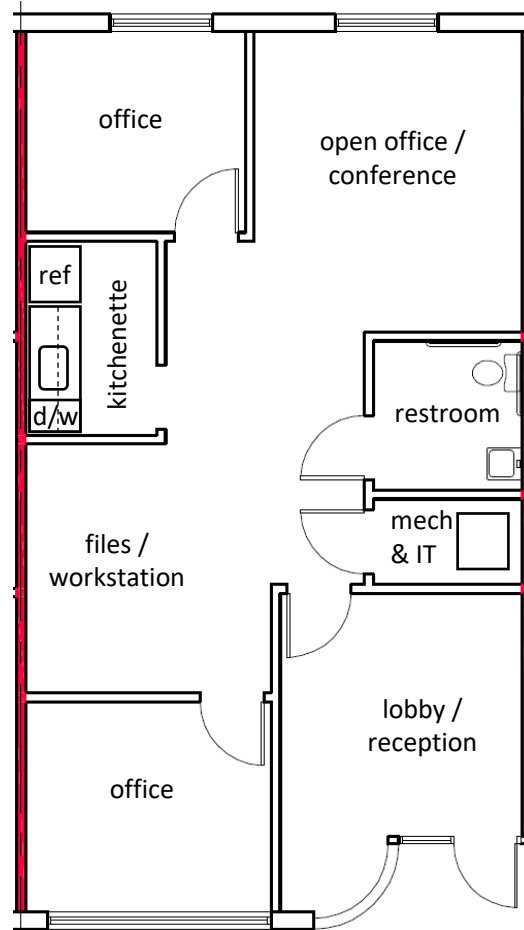


7035 Orchard Lake Road, West Bloomfield, Michigan – Suite 500



7035 Orchard Lake Road, West Bloomfield, Michigan – Suite 500

# FLOOR PLAN – SUITE 700



Suite 700  
1,000 ft<sup>2</sup>



7035 Orchard Lake Road, West Bloomfield, Michigan – Suite 700



7035 Orchard Lake Road, West Bloomfield, Michigan – Suite 700



7035 Orchard Lake Road, West Bloomfield, Michigan – Suite 700



7035 Orchard Lake Road, West Bloomfield, Michigan – Suite 700



7035 Orchard Lake Road, West Bloomfield, Michigan – Suite 700



7035 Orchard Lake Road, West Bloomfield, Michigan – Suite 700

---

# HIGHLIGHTS

- Private suite entrance with 24/7/365 access
- Private in-suite ADA compliant restroom(s)
- Convenient parking near your front door
- Individual heating and cooling unit(s) with 24/7/365 tenant control
- Open/close operable windows in northern walled offices
- Private Kitchenette
- Suite signage to showcase your brand
- Monument sign at Orchard Lake Road for anchor suite occupant
- Seasonal landscape flowers
- Newly refreshed floor and paint
- New roof installed in 2024
- Convenient to restaurants, banks, shops, grocery stores, post office, fitness
- Tenant referral incentives

---

# CONTACT

---

Rob Krochmal

VP, Leasing & Acquisitions

rob@surnow.com

248.867.3304 mobile

## ABOUT US, YOUR HOST

The Surnow Company is a family-owned developer, owner and property manager headquartered in Downtown Birmingham, Michigan.

Known for attention to detail and white-glove approach, we provide quality space and services for our customers and communities to thrive.

