



11 Acres - Residential Development Land | Visalia, CA

Property For Sale

1005 N Demaree Street  
Visalia, California 93291  
O | 559.754.3020  
F | 559.429.4016  
www.mdgre.com

**GRAHAM** | & ASSOCIATES

Jim Abercrombie  
Lic# 01804235  
www.mdgre.com

to learn more, visit: [www.mdgre.com](http://www.mdgre.com)

## PROPERTY DETAILS

**Address:** E Goshen Ave | Visalia, CA

**APN:** 098-050-003

**Square Feet Available:** 479,160 +/- Sq. Ft.

**Zoning** 50% - RM-2  
50% - RM-3

**Sales Price** \$1,100,275.00

### Additional Comments:

The subject property is inside the city limits of Visalia, ready to be developed. The Central Valley of California is one of the growing regions in the United States. The current city plan recognizes the need for housing to support this ongoing growth. This site is a prime location and has the additional benefits of being zoned for multi-family and single-family homes. All city utilities are present and ready to go.



**Contact Broker:**  
Matt Graham  
Lic# 01804235

**to learn more, visit: [www.mdgre.com](http://www.mdgre.com)**

1005 N Demaree Street  
Visalia, California 93291  
O | 559.754.3020

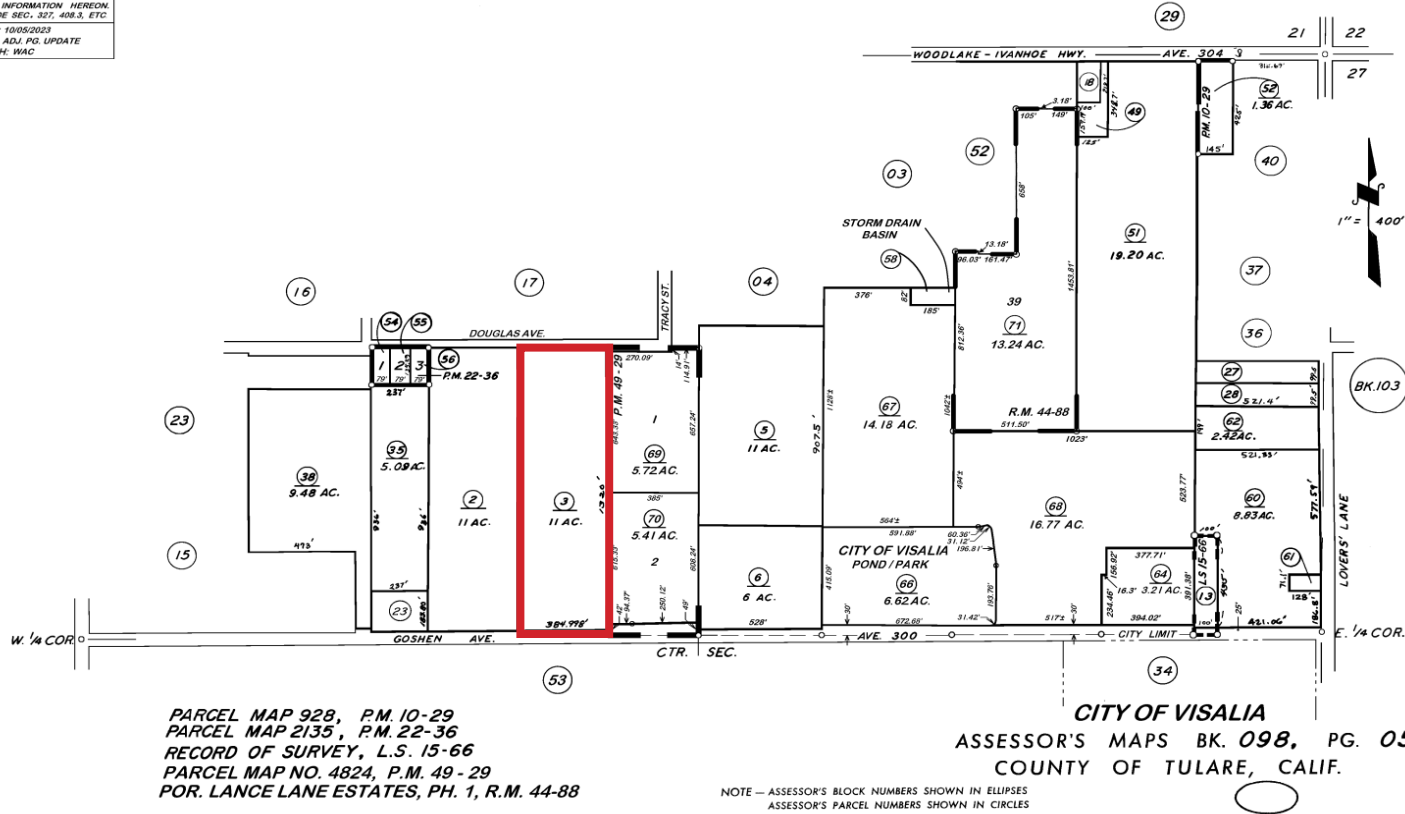
PLEASE NOTE: ALL INFORMATION AND REPRESENTATION MADE HEREIN, WHILE NOT GUARANTEED, HAVE BEEN SECURED FROM SOURCES WE BELIEVE TO BE RELIABLE, HOWEVER, THEY ARE NOT WARRANTED BY MATT GRAHAM & ASSOCIATES AND ARE SUBJECT TO CHANGE WITHOUT NOTICE.

# TAX MAP

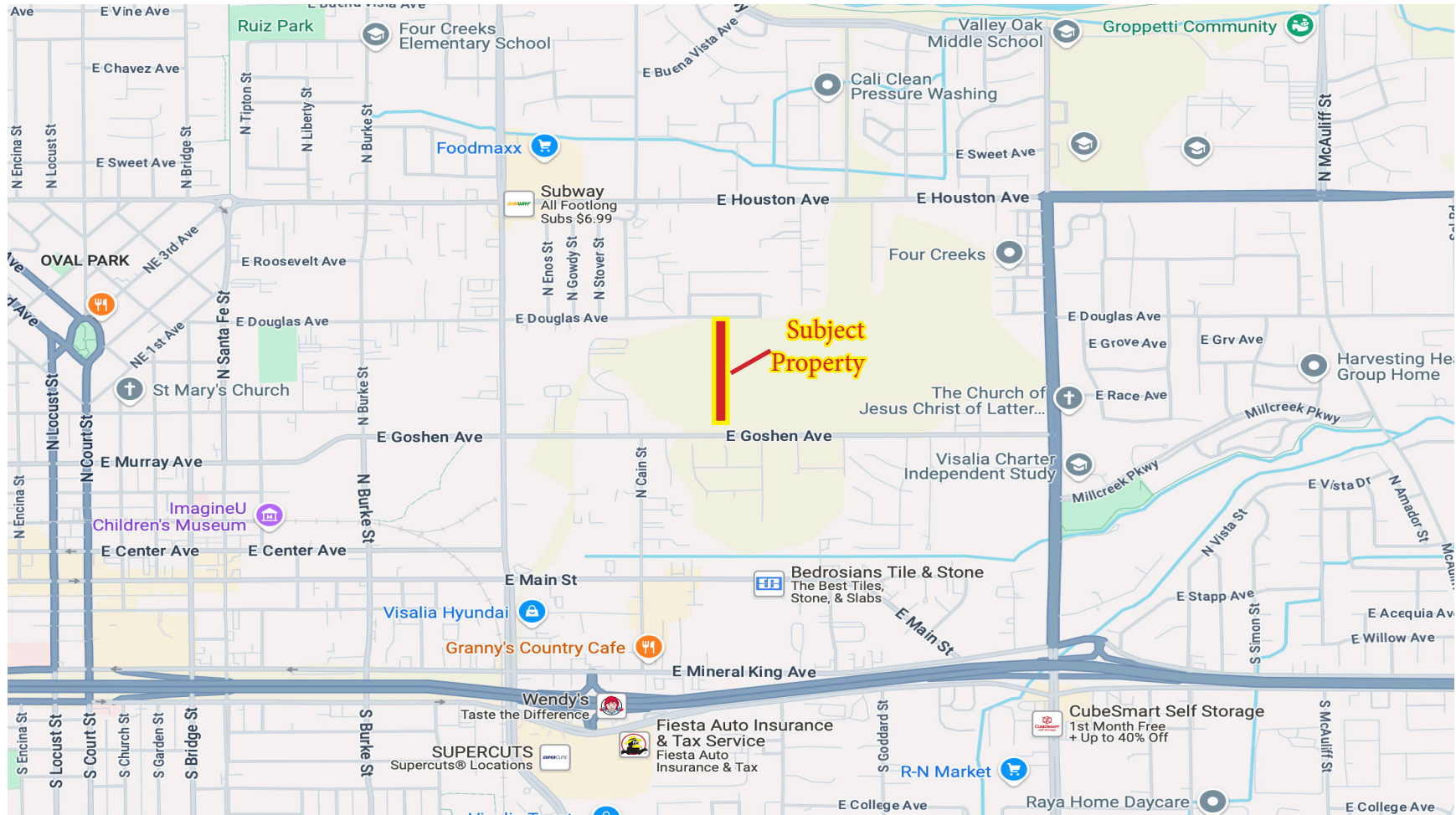
POR. N 1/2 SEC. 28, T.18S., R.25E., M.D.B. & M.

TAX CODE AREA **098-05**  
006-000 006-010  
006-096 006-119  
006-125 006-226

**DISCLAIMER**  
THIS MAP WAS PREPARED FOR LOCAL PROPERTY ASSESSMENT PURPOSES ONLY. THE PARCELS SHOWN HEREON MAY NOT COMPLY WITH STATE AND LOCAL SUBDIVISION ORDINANCES. NO LIABILITY IS ASSUMED FOR THE USE OF THE INFORMATION HEREON. R & T CODE SEC. 327, 408.3, ETC.  
REVISED: 10/05/2023  
REASON: ADJ. PG. UPDATE  
CAD TECH: WAC



# LOCATION MAP



PLEASE NOTE: ALL INFORMATION AND REPRESENTATION MADE HEREIN, WHILE NOT GUARANTEED, HAVE BEEN SECURED FROM SOURCES WE BELIEVE TO BE RELIABLE, HOWEVER, THEY ARE NOT WARRANTED BY MATT GRAHAM & ASSOCIATES AND ARE SUBJECT TO CHANGE WITHOUT NOTICE.

## PROPERTY LAYOUT



PLEASE NOTE: ALL INFORMATION AND REPRESENTATION MADE HEREIN, WHILE NOT GUARANTEED, HAVE BEEN SECURED FROM SOURCES WE BELIEVE TO BE RELIABLE, HOWEVER, THEY ARE NOT WARRANTED BY MATT GRAHAM & ASSOCIATES AND ARE SUBJECT TO CHANGE WITHOUT NOTICE.