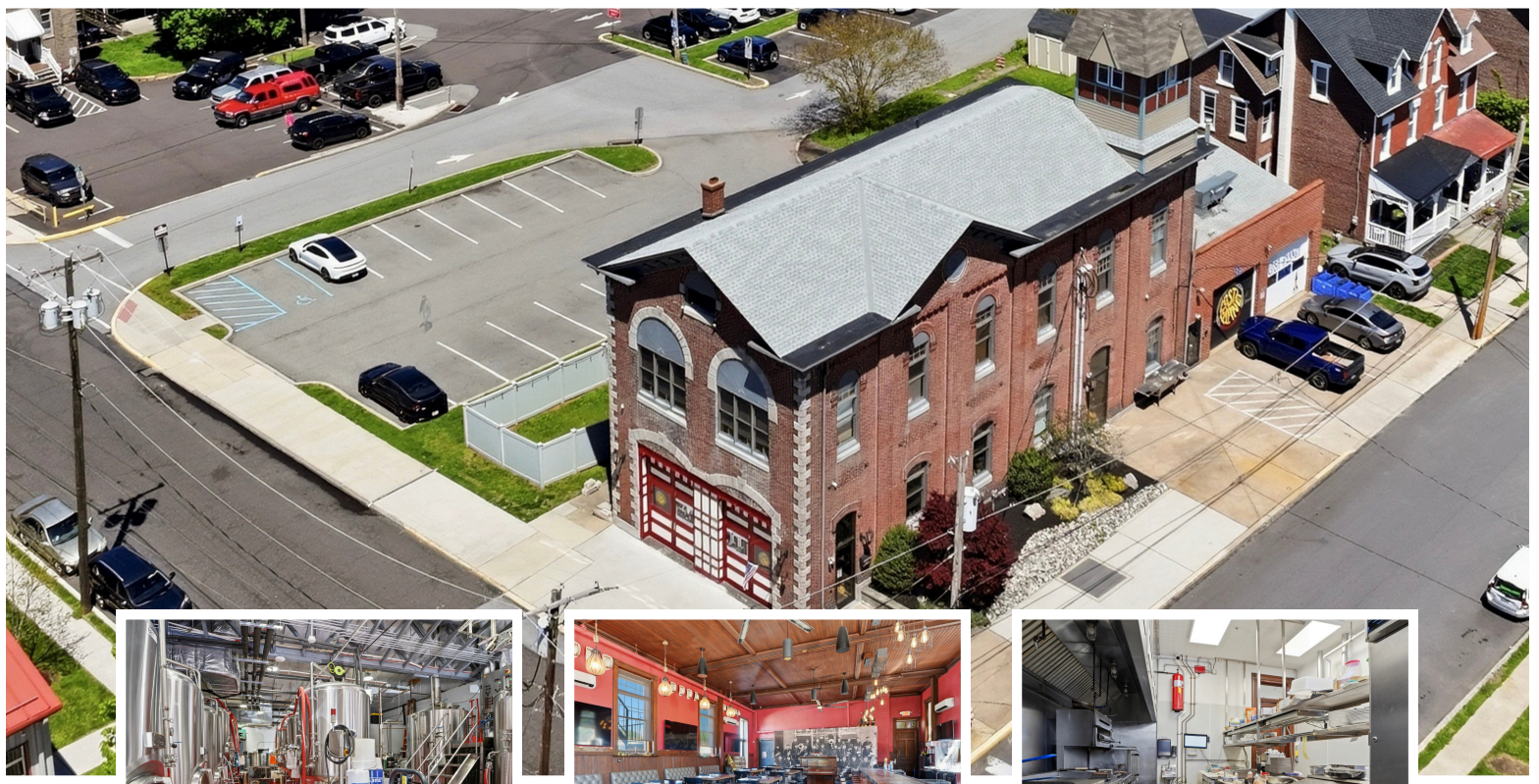


301 WALNUT STREET ROYERSFORD, PA



RESTAURANT, BAR MICRO-BREWERY FOR SALE PRICE UPON REQUEST

PROPERTY FEATURES

- ✓ 6,235 sqft 2-Story Firehouse
- ✓ 0.293 acres in R-3 District
- ✓ Sale includes PP&E

Positioned inside a converted historic firehouse in the heart of Royersford Borough, 301 Walnut Street blends timeless brick-and-beam character with a fully built-out restaurant and brewery operation designed for the next chapter of hospitality. Whether expanding a hospitality portfolio, launching a flagship concept, or securing a long-term investment in one of Montgomery County's fastest-growing boroughs, this landmark property offers visibility, identity and an atmosphere that simply can't be replicated. In an era where consumers gravitate toward authentic experiences and destination-driven spaces, properties with this level of character, presence, and built-in energy are becoming increasingly rare. It's out of this world.