

# ECHELON<sup>TM</sup>

## CAHUENGA



### 1200 CAHUENGA

**Total Area**  
97,527 SF (Divisible)

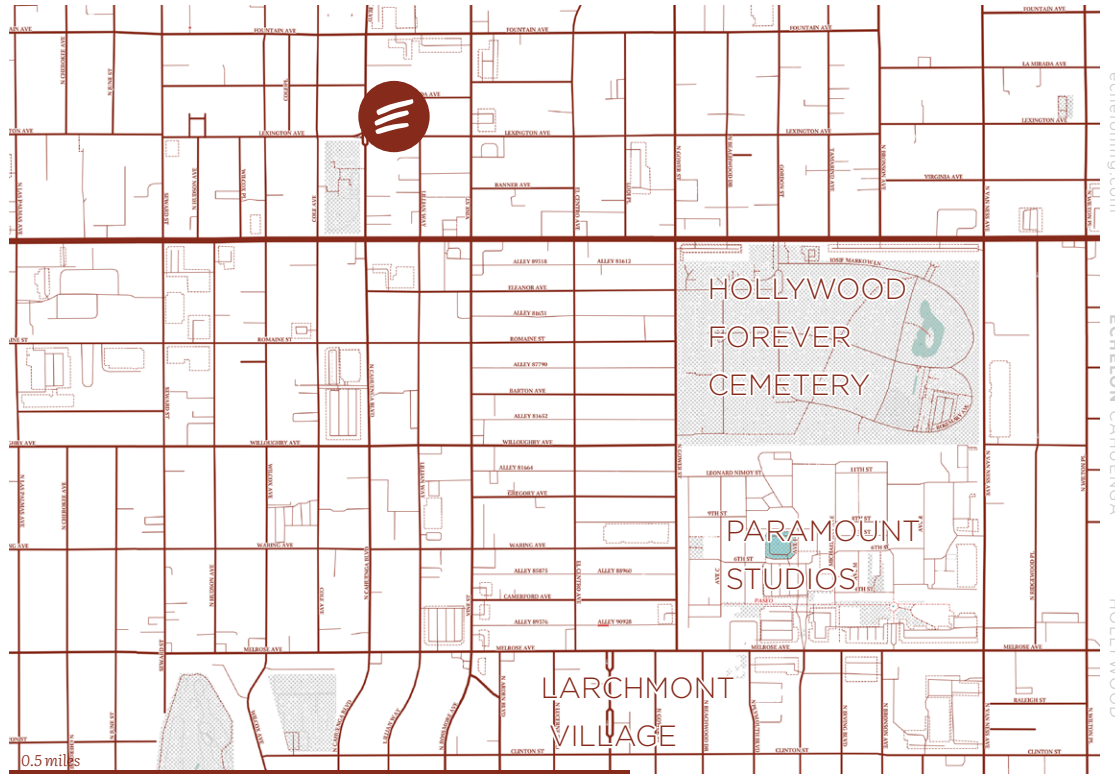
**Lease Rate**  
Inquire for Details

**Availability**  
March 2026

**Term**  
5-10 Years

**Parking**  
2 Spaces per 1,000 SF

Building	Level	Area
<b>A</b>	Level 2	18,318 SF
	Level 3	18,206 SF
	Penthouse	9,645 SF
	<b>Total</b>	<b>46,169 SF</b>
<b>B</b>	Level 1	11,090 SF
	Mezzanine	1,478 SF
	Level 2	13,635 SF
	<b>Total</b>	<b>26,202 SF</b>
<b>C</b>	Level 1	977 SF
	Level 2	12,740 SF
	Level 3	8,135 SF
	Penthouse	3,304 SF
	<b>Total</b>	<b>25,156 SF</b>
<b>Total</b>		<b>97,527 SF</b>



**Contact**

**213  
629  
6514**

**Inquiries**



**Mike Condon Jr**  
Vice Chairman  
213 629 7379  
mike.condon@cushwake.com  
Lic #01884476

**Scott Menkus**  
Exec. Managing Director  
310 059 2211  
scott.menkus@cushwake.com  
Lic #01476553

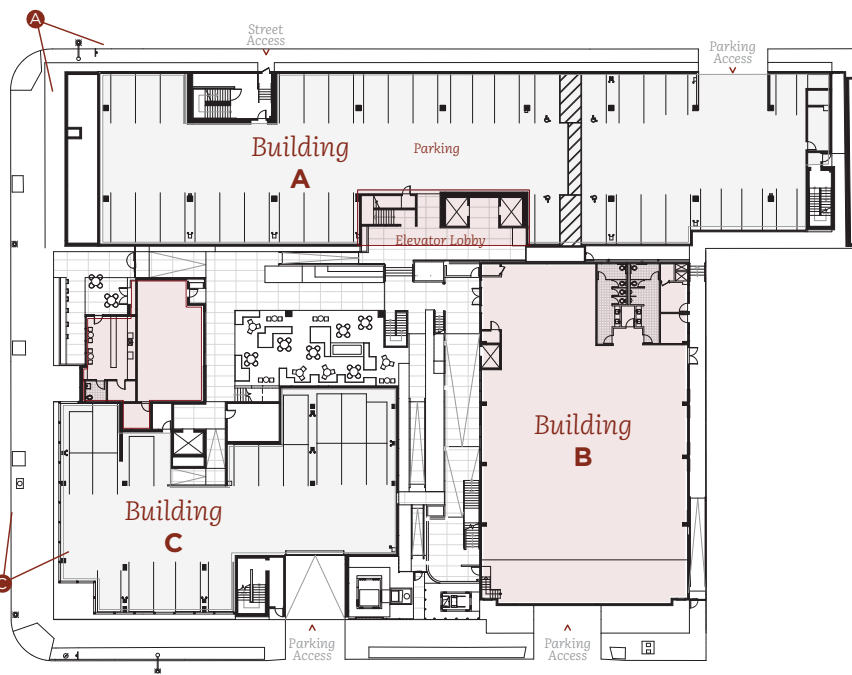
**Josh Bernstein**  
Managing Director  
310 228 1425  
josh.bernstein@cushwake.com  
Lic #01828093

**Brittany Winn**  
Senior Director  
213 629 6514  
brittany.winn@cushwake.com  
Lic #01978909

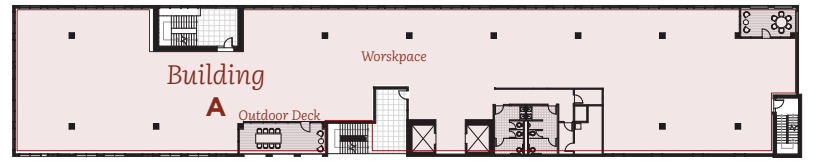


**A** Street View

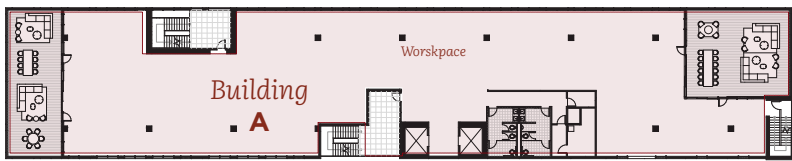
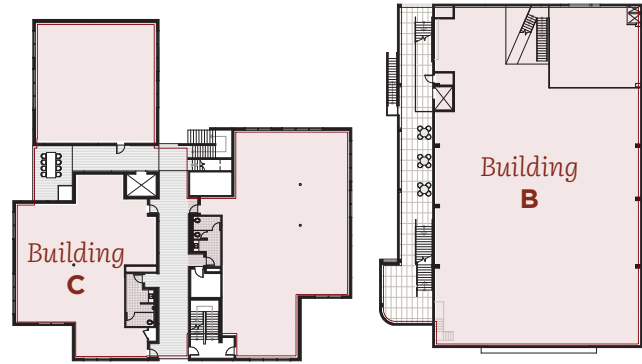




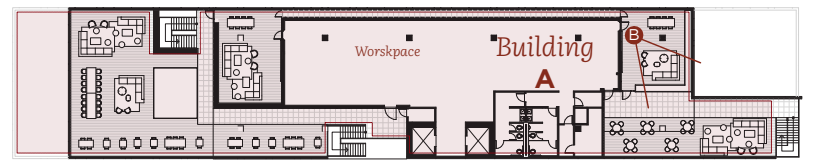
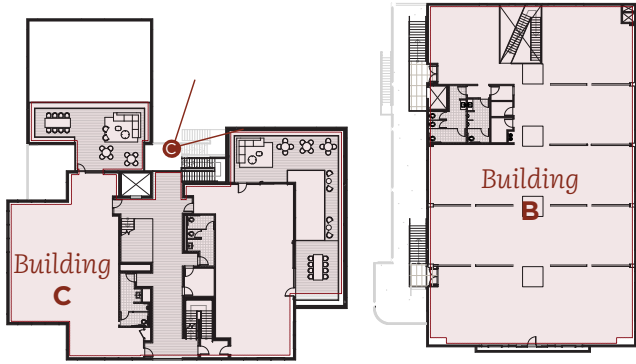
▲ 1st LEVEL



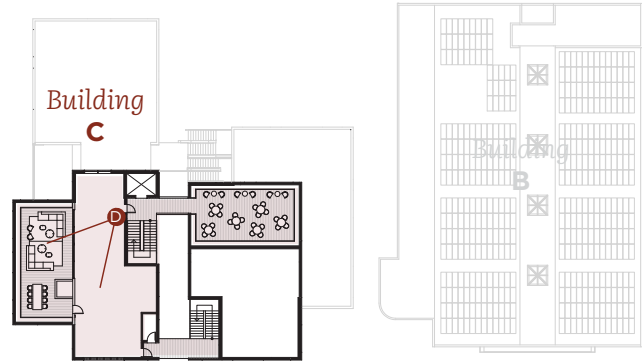
▲ 2nd LEVEL



▲ 3rd LEVEL



▲ PH



B Building A — Penthouse Interior



C View from stair of Building C



D Bungalow Interior