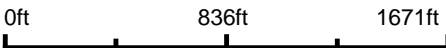


Aerial Map



Boundary Center: 44° 52' 29.51, -97° 3' 45.41



10-116N-52W
Codington County
South Dakota

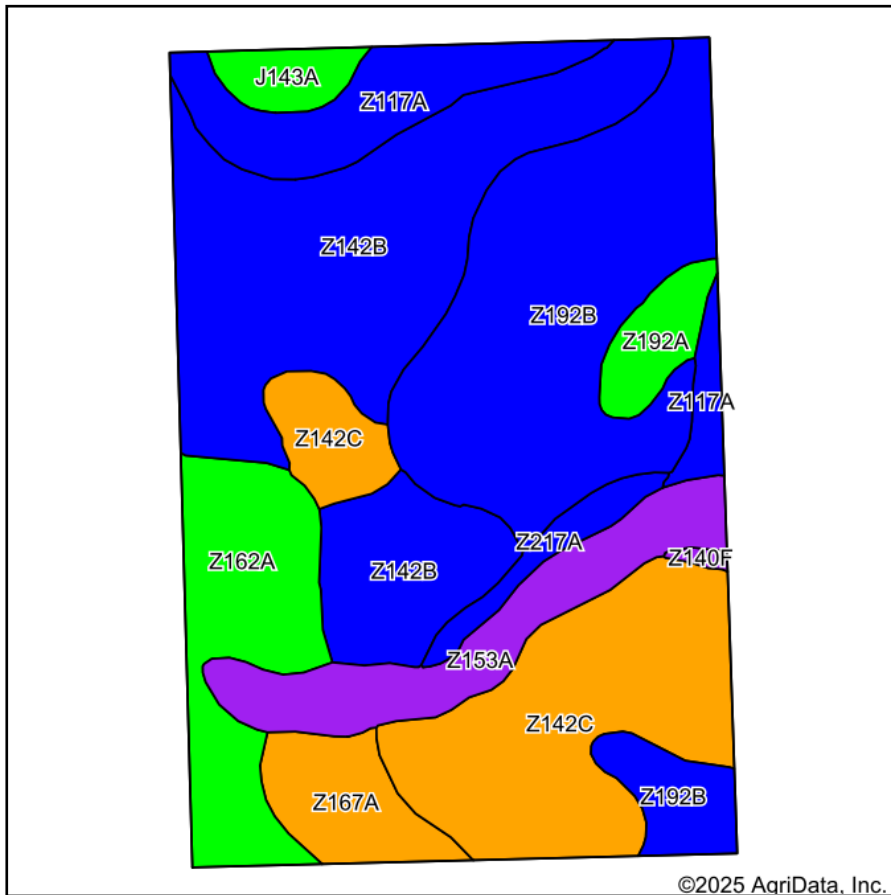


Maps Provided By:
surety
CUSTOMIZED ONLINE MAPPING
© AgriData, Inc. 2025 www.AgriDataInc.com

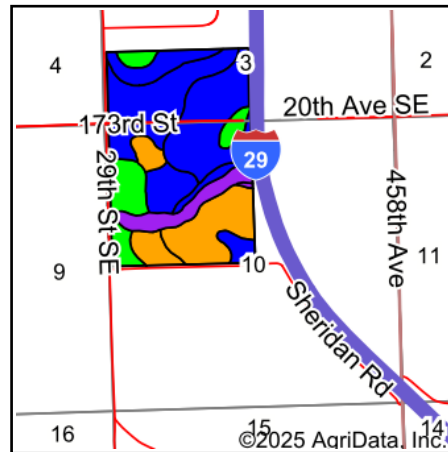
12/23/2025

Field borders provided by Farm Service Agency as of 5/21/2008.

Soils Map



Soils data provided by USDA and NRCS.



State: **South Dakota**
 County: **Codington**
 Location: **10-116N-52W**
 Township: **Sheridan**
 Acres: **238.24**
 Date: **12/23/2025**



Area Symbol: SD029, Soil Area Version: 29

Code	Soil Description	Acres	Percent of field	Non-Irr Class Legend	Non-Irr Class *c	Productivity Index	*n NCCPI Soybeans
Z142B	Barnes-Buse-Svea loams, 1 to 6 percent slopes	62.32	26.2%	[Blue]	Ile	79	63
Z192B	Vienna-Brookings complex, 1 to 6 percent slopes	54.65	22.9%	[Blue]	Ile	86	68
Z142C	Barnes-Buse-Svea loams, 2 to 9 percent slopes	40.69	17.1%	[Orange]	IIle	68	64
Z162A	La Prairie loam, coteau, 0 to 2 percent slopes, occasionally flooded	22.23	9.3%	[Green]	Is	93	67
Z153A	Lamoure-Rauville silty clay loams, channeled, 0 to 2 percent slopes, frequently flooded	17.60	7.4%	[Purple]	VIw	13	18
Z117A	Mckranz-Badger silty clay loams, 0 to 2 percent slopes	16.98	7.1%	[Blue]	IIs	80	54
Z167A	Renwash loam, 0 to 2 percent slopes, rarely flooded	9.48	4.0%	[Orange]	IIIs	47	21
Z192A	Vienna-Brookings complex, 0 to 2 percent slopes	5.50	2.3%	[Green]	Is	90	69
J143A	Kranzburg-Brookings silty clay loams, 0 to 2 percent slopes	4.18	1.8%	[Green]	Is	93	70
Z217A	McKranz silty clay loam, 0 to 2 percent slopes	4.11	1.7%	[Blue]	IIs	75	56
Z140F	Buse-Langhei complex, coteau, 15 to 40 percent slopes	0.50	0.2%	[Purple]	VIIe	19	12
Weighted Average					2.38	74.3	*n 59.1

*n: The aggregation method is "Weighted Average using all components"

*c: Using Capabilities Class Dominant Condition Aggregation Method

Soils data provided by USDA and NRCS.