

666 Plainsboro Rd, Plainsboro NJ



# For lease

Office spaces available -  
various sizes!

## Property highlights

- Located 3 miles from Route 1 and Princeton Medical Center
- Each suite has own bathroom and kitchenette
- Ample parking
- Average household income (3 mile radius): \$196,542

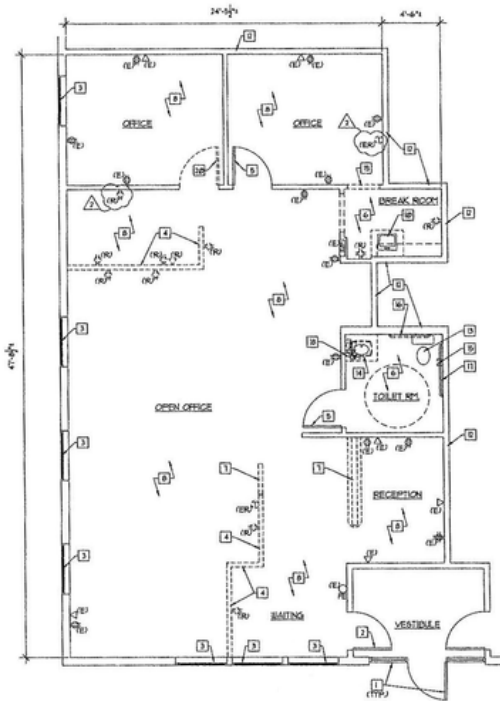
**Sheila Tara**

[sheila.tara@jll.com](mailto:sheila.tara@jll.com)

+1 609 721 7313

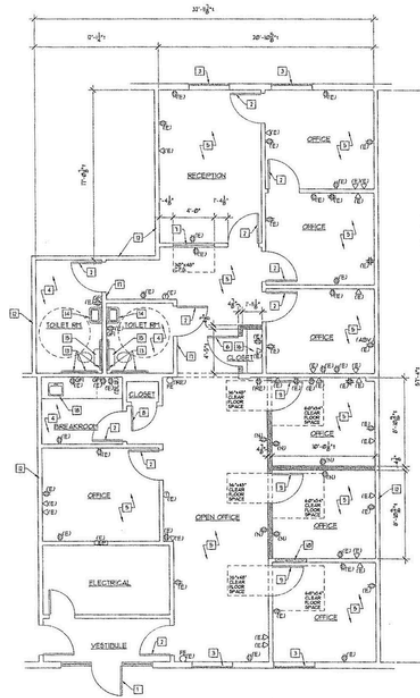


# Floorplans



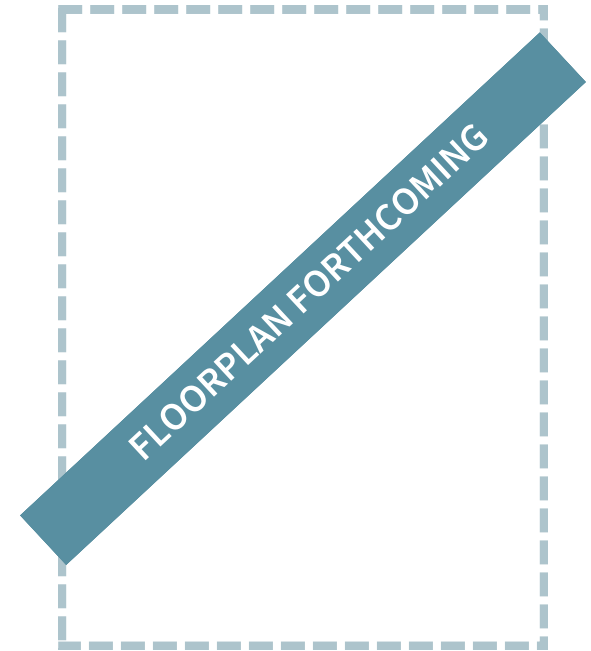
Suite 1210  
Building 1200

1,401 sf



Suite 1226  
Building 1200

1,850 sf



Suite 1181  
Building 1100

909 sf

# Location Map





#### About JLL

For over 200 years, JLL (NYSE: JLL), a leading global commercial real estate and investment management company, has helped clients buy, build, occupy, manage and invest in a variety of commercial, industrial, hotel, residential and retail properties. A Fortune 500® company with annual revenue of \$20.9 billion and operations in over 80 countries around the world, our more than 103,000 employees bring the power of a global platform combined with local expertise. Driven by our purpose to shape the future of real estate for a better world, we help our clients, people and communities SEE A BRIGHTER WAY™. JLL is the brand name, and a registered trademark, of Jones Lang LaSalle Incorporated. For further information, visit [jll.com](https://www.jll.com).

**jll.com**

Jones Lang LaSalle Brokerage, Inc.

Although information has been obtained from sources deemed reliable, neither Owner nor JLL makes any guarantees, warranties or representations, express or implied, as to the completeness or accuracy as to the information contained herein. Any projections, opinions, assumptions or estimates used are for example only. There may be differences between projected and actual results, and those differences may be material. The Property may be withdrawn without notice. Neither Owner nor JLL accepts any liability for any loss or damage suffered by any party resulting from reliance on this information. If the recipient of this information has signed a confidentiality agreement regarding this matter, this information is subject to the terms of that agreement. © 2024 Jones Lang LaSalle IP, Inc. All rights reserved