



AVAILABLE OFFICE SUBLEASE
240 CROSSWAYS PARK DRIVE, WOODBURY, NY

AVAILABLE SPACE

4,700 SF

ASKING RENT

\$25.00 PSF + \$3.50 ELECTRIC

TERM

THRU 11/30/27

COMMENTS

- AMPLE PARKING
- BROKER COOPERATION ON 50/50 SPLIT
- LOCATED DIRECTLY OFF OF ROUTE 135 AT EXIT 44 ON THE L.I.E
- DIRECT EXTENSION WITH LANDLORD AVAILABLE
- CORPORATE SIGNAGE AVAILABLE

HARRIS ROUSSO
EXECUTIVE MANAGING DIRECTOR
516-547-0342
HROUSSO@RESLTD.COM



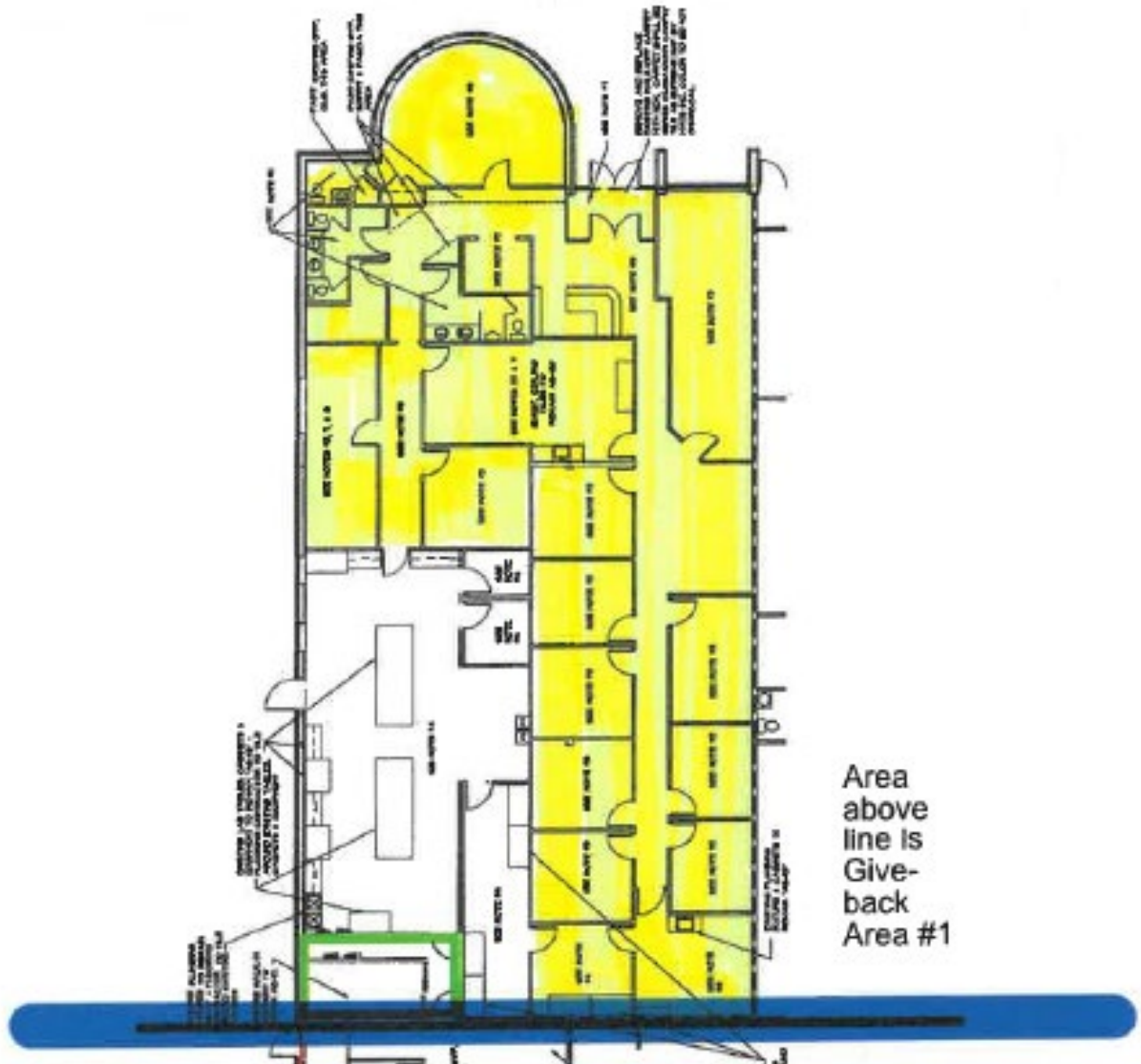
Real Estate Strategies, Ltd.

JORDAN OLIVER
MANAGING DIRECTOR
516-91-5866
JOLIVER@RESLTD.COM

500 North Broadway • Suite 165 • Jericho • New York • 11753 • P: 516-942-8300 • F: 516-942-8311

All information furnished regarding either property for sale, rental or the financing is from sources deemed reliable. No representation is made as to the accuracy thereof and submitted subject to errors, change of price, rental rates or other conditions, prior sale, lease or financing, or withdrawal without notice. All areas and dimensions are approximate.

240 CROSSWAYS PARK DRIVE, WOODBURY, NY
FLOOR PLAN



Area
above
line is
Give-
back
Area #1

HARRIS ROUSSO
EXECUTIVE MANAGING DIRECTOR
516-547-0342
HROUSSO@RESLTD.COM



Real Estate Strategies, Ltd.

JORDAN OLIVER
MANAGING DIRECTOR
516-91-5866
JOLIVER@RESLTD.COM

500 North Broadway • Suite 165 • Jericho • New York • 11753 • P: 516-942-8300 • F: 516-942-8311

All information furnished regarding either property for sale, rental or the financing is from sources deemed reliable. No representation is made as to the accuracy thereof and submitted subject to errors, change of price, rental rates or other conditions, prior sale, lease or financing, or withdrawal without notice. All areas and dimensions are approximate.