



# 102 EAST 1400 SOUTH

BOUNTIFUL, UT 84010-5118

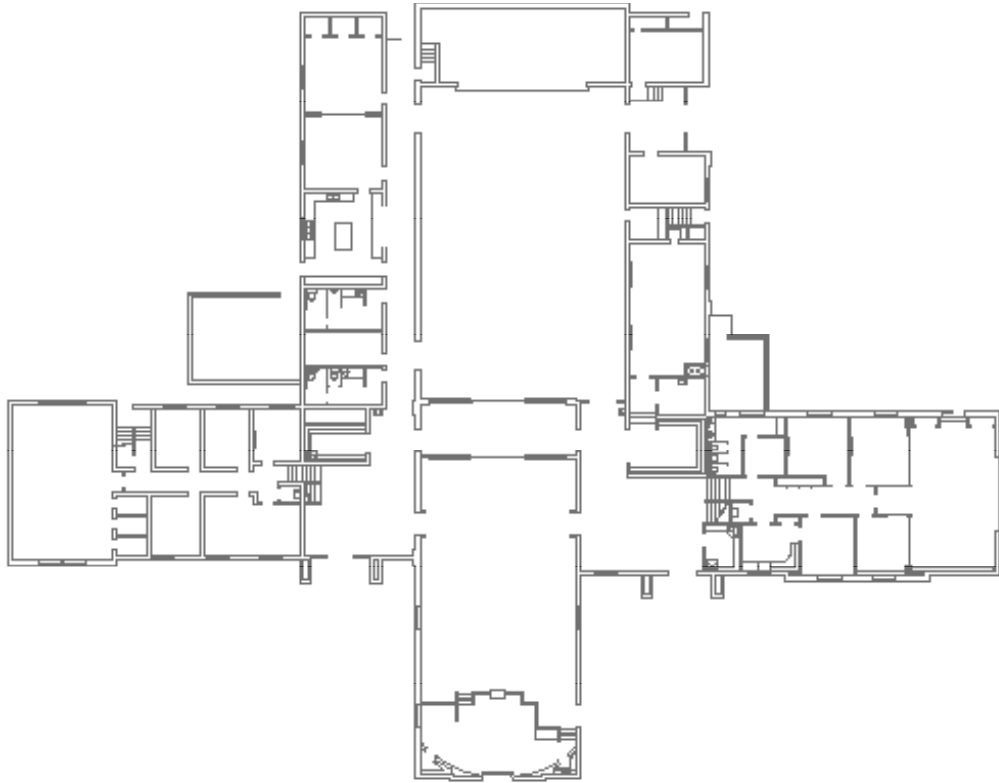
**CBRE**

## PROPERTY FOR SALE



# FLOORPLAN

21,019 SF



## Offering Highlight

The property located at 102 East 1400 South, Bountiful, UT, is listed for \$1,950,000. This property sits on 2.07 acres of land. It is zoned under the R-4 code, which designates it as a single-family residential area.

Zoning and allowed uses must be confirmed with the city.

**R-4**

Zoning  
must be confirmed with the city

**1950**

Year Built

**2.07**

Acres

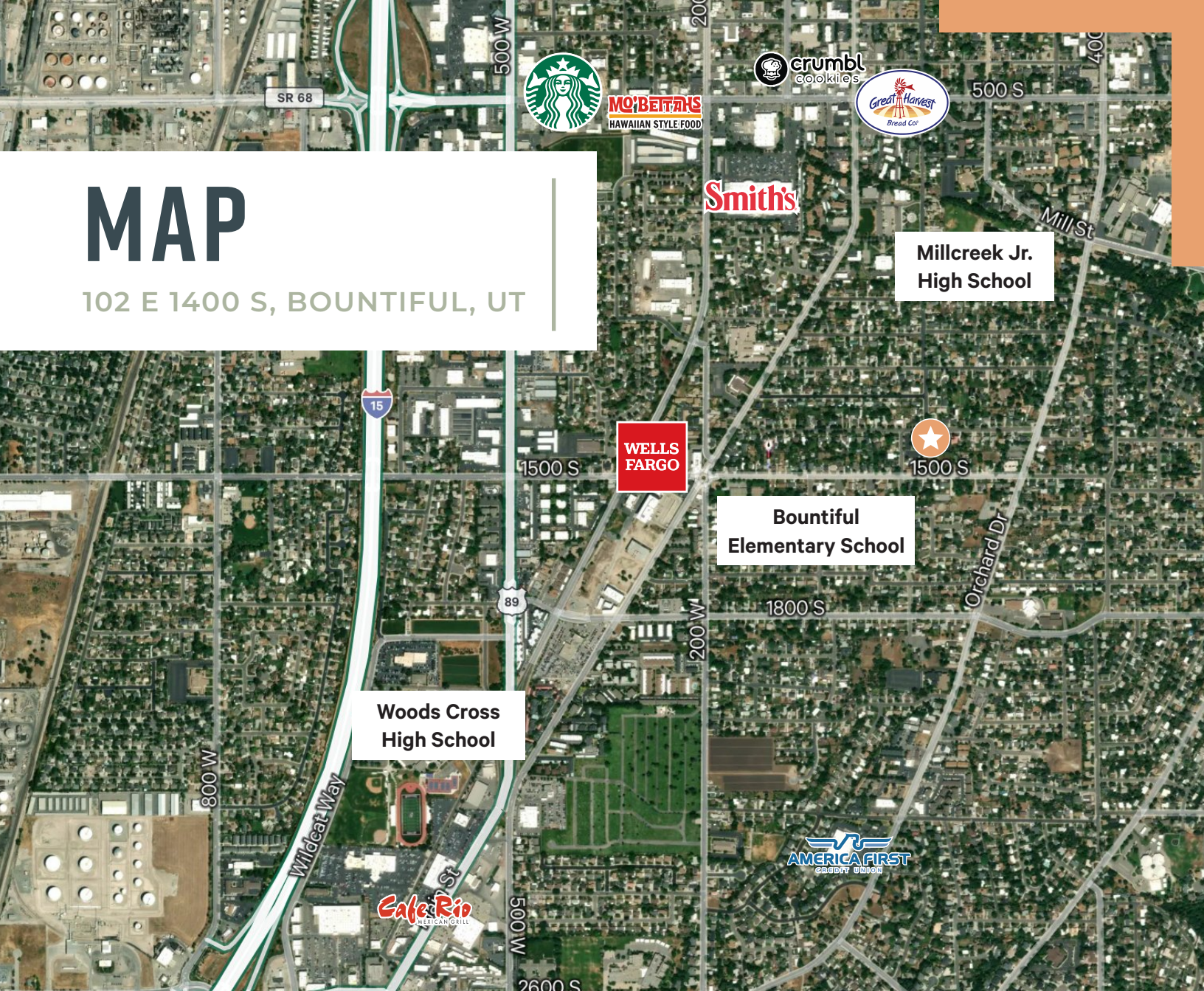
**\$ 1,950,000**

Price



# MAP

102 E 1400 S, BOUNTIFUL, UT



## CONTACTS

### Kreg Peterson

First Vice President

+1 801 869 8092

kreg.peterson@cbre.com

### Cole Bennee

Associate

+1 801 869 8098

cole.bennee@cbre.com

### Erik Simper

Transaction Management Director

+1 801 869 8016

erik.simper@cbre.com

# CBRE

© 2026 CBRE, Inc. All rights reserved. This information has been obtained from sources believed reliable but has not been verified for accuracy or completeness. CBRE, Inc. makes no guarantee, representation or warranty and accepts no responsibility or liability as to the accuracy, completeness, or reliability of the information contained herein. You should conduct a careful, independent investigation of the property and verify all information. Any reliance on this information is solely at your own risk. CBRE and the CBRE logo are service marks of CBRE, Inc. All other marks displayed on this document are the property of their respective owners, and the use of such marks does not imply any affiliation with or endorsement of CBRE. Photos herein are the property of their respective owners. Use of these images without the express written consent of the owner is prohibited.