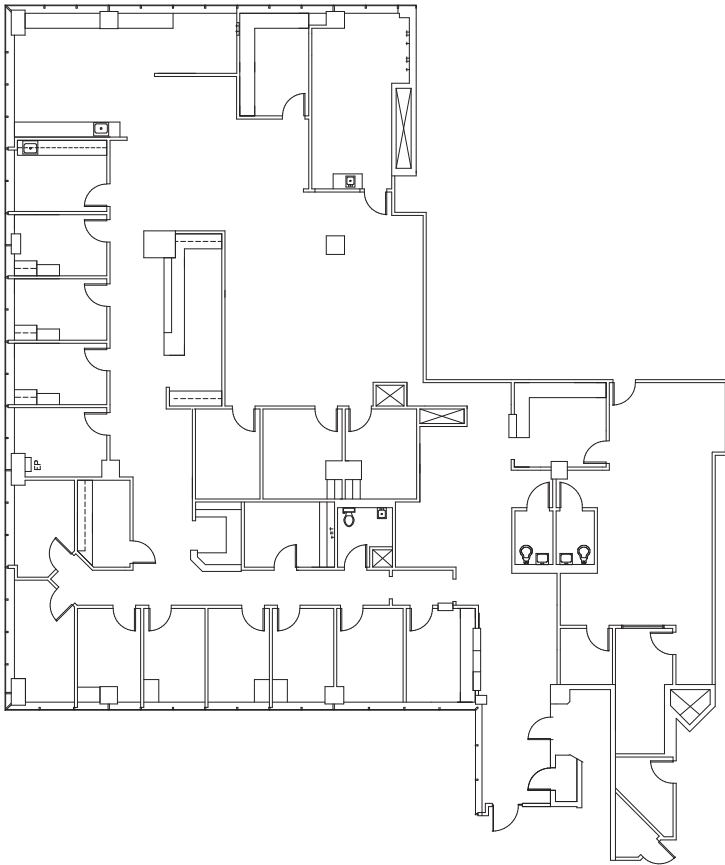


SAINT THOMAS WEST - PLAZA EAST

Suite 1000 | 8,172 SF Available

4230 Harding Rd | Nashville, TN | 37205



SUITE 1000 HIGHLIGHTS

- Window lined 10th Floor suite
- Fully customizable floorplan, able to be modified as-needed
- Former Orthopedic practice boasting a large physical therapy space
- (3) Private Restrooms
- (1) Large, (1) small nurse's station
- (11) patient exam rooms
- (5) private offices
- (2) storage rooms, and (2) storage closets
- (1) laboratory area
- (1) large break room

Scan for virtual tour.



Building owned and managed by
HEALTHCARE REALTY

LEASING INFORMATION

Allen Bolden, CCIM, SIOR
615.693.9034
allen@hbre.com