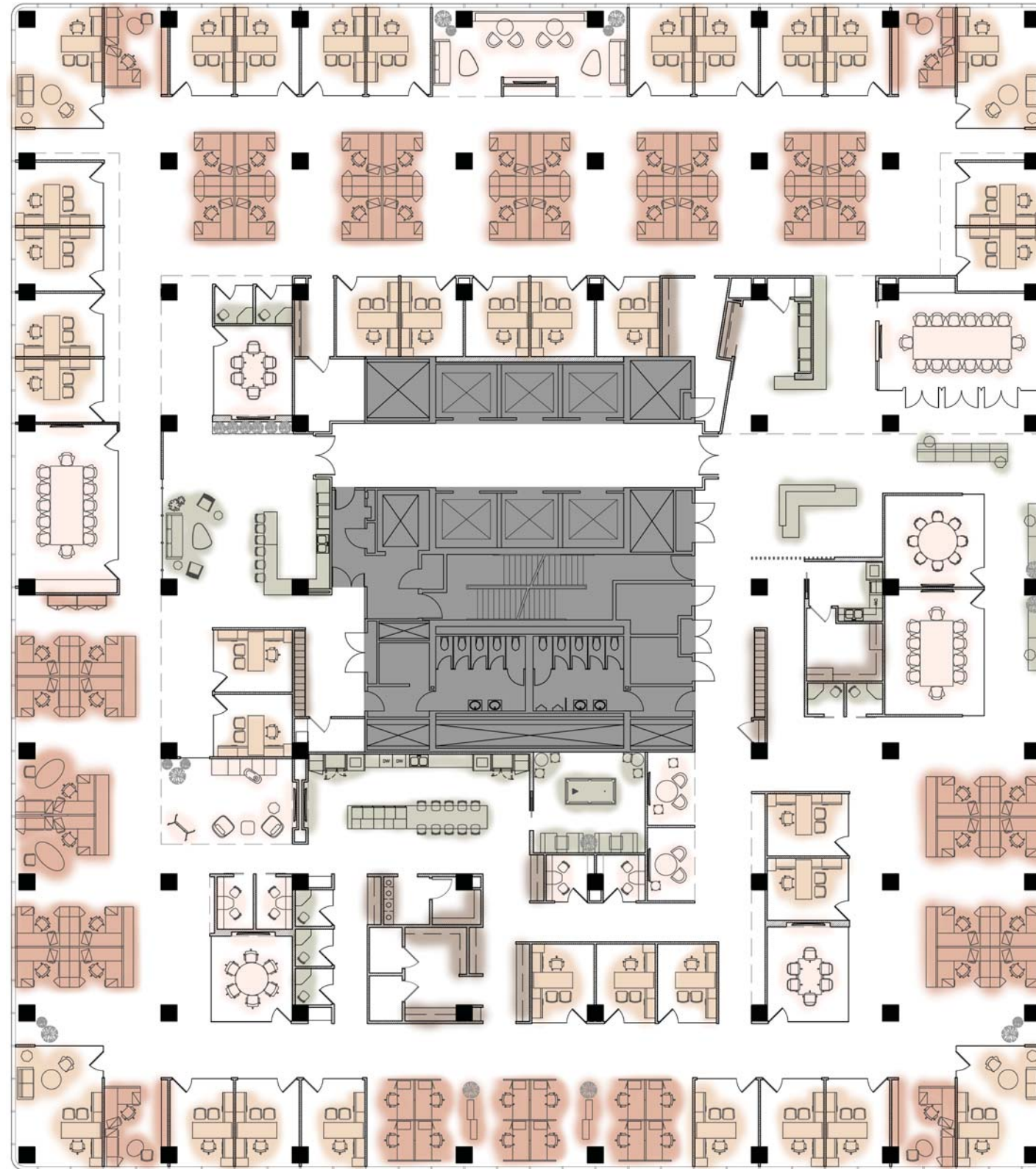


2

NO LASALLE

23RD FLOOR - PROSPECTIVE FULL FLOOR TENANT

28,075 RSF



PRIVATE OFFICE

(36) PRIVATE OFFICES

OPEN ENVIRONMENT

(38) 72"x92" WORKSTATIONS

(4) 66"x144" WORKSTATIONS

(6) 72"x30" WORKSTATIONS

COLLABORATION

(1) 14P CONFERENCE ROOM

(1) 12P LARGE CONFERENCE ROOM

(1) 10P CONFERENCE ROOM

(1) 8P CONFERENCE ROOM

(3) 6P CONFERENCE ROOM

(6) 2P HUDDLE ROOM

(2) OPEN MEETING SPACE

COMMUNITY + WELLNESS

(1) CAFE + LOUNGE

(2) RECEPTION AREA + TEAPOINT

(1) GAME ROOM/LOUNGE

(7) PHONE ROOMS

PRODUCTION + SUPPORT

(2) COPY + WORK AREA

(2) COAT CLOSET

(5) LARGE TELCO + STORAGE

EMPLOYEE INDEX : 85 DEDICATED SEATS
PROVIDES 330 RSF PER PERSON