



# Williamsburg Village

## AVAILABLE FOR LEASE



5757 South 34th Street, Suite 100  
Lincoln, NE 68516

**Square Feet:** 2,437 Sq. Ft.

**Lease Rate:** \$16.00 per Sq. Ft. (NNN)

**Property Type:** Office

**Zoning:** O3 - Office Park

**Parking:** 4 stalls per 1,000 Sq. Ft.

**Building Size:** 7,678 Sq. Ft.

**Cross Streets:** 34<sup>th</sup> & Old Cheney

Williamsburg Village, a beautiful, spacious colonial style community, is located on the corner of 40<sup>th</sup> and Old Cheney with access to professional businesses, schools, shopping, dining, entertainment, and grocery stores. With the advantages of its proximity to one of the busier intersections in South Lincoln, Williamsburg Village still offers a quiet environment with beautiful landscaping, mature trees, and bicycle/walking paths around the lake.

Leasing with Hampton is a long standing relationship from signing your lease, designing your space, providing property management, and supporting you along the way!

### KEY FEATURES

- **Busy Intersection**
- **Growing Community**
- **Prominent Neighborhood**

Demographics	1 Mile	3 Miles	5 Miles
Population	15,340	86,994	182,776
Households	6,548	34,924	74,319
Median HH Income	\$67,026	\$71,815	\$59,764
Traffic Counts	29,690 ADT		



**HAMPTON**  
ENTERPRISES  
PROPERTIES & CONSTRUCTION

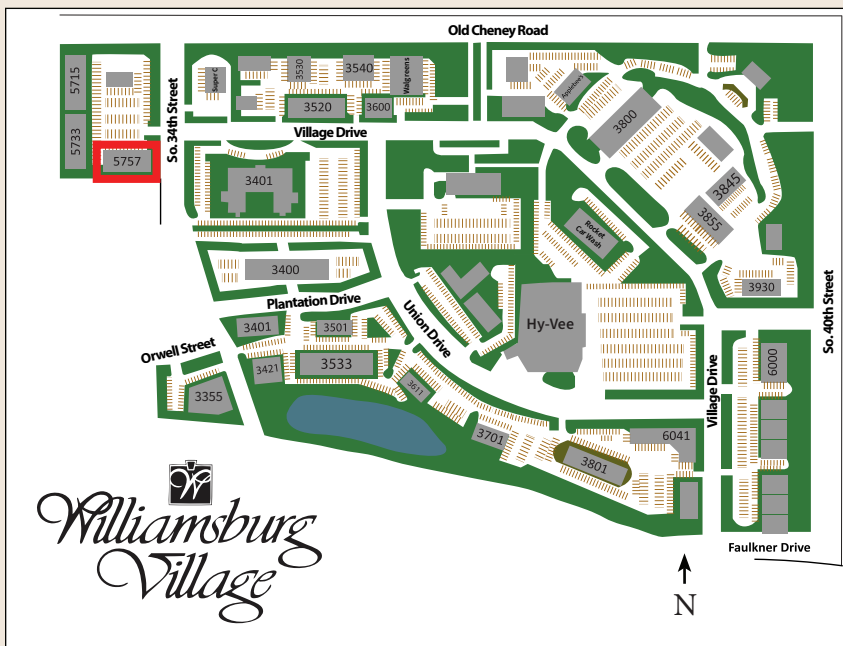
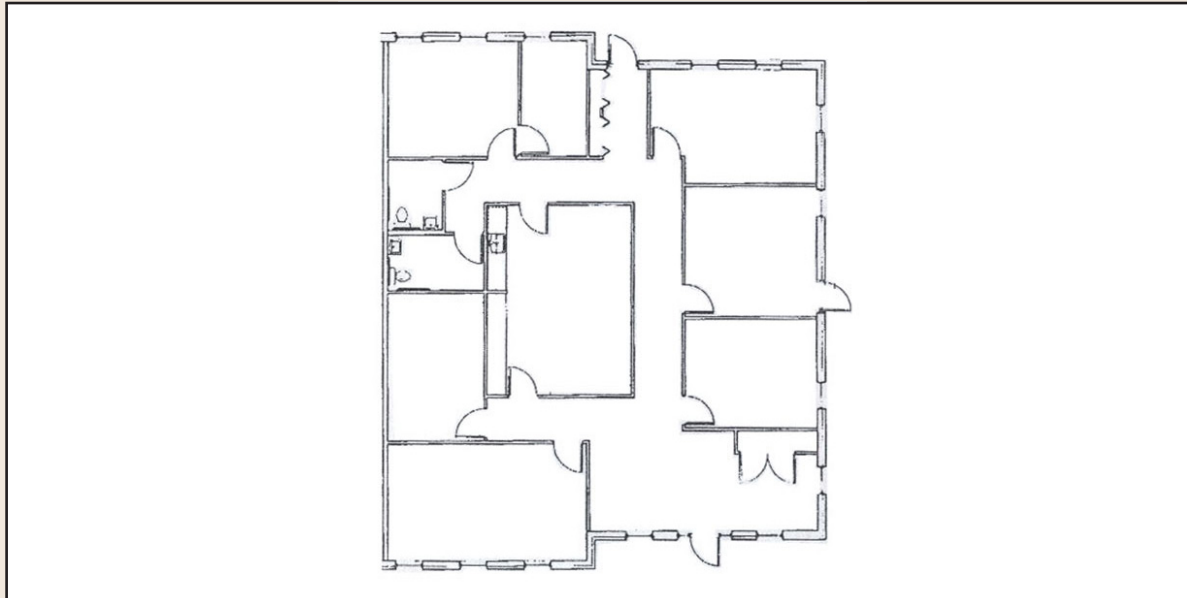
*Because Relationships Really Do Matter*

Hampton Enterprises - Properties & Construction  
(402) 489-8858  
hampton1.com

3400 Plantation Drive, Suite 110 • Lincoln, NE 68516



5757 South 34th Street, Suite 100 • Lincoln, NE 68516  
2,437 Sq. Ft.



With Hampton, you are able to customize  
a space to meet your business needs.

Contact us today to set up a tour:

(402) 489-8858

[leasing@hampton1.com](mailto:leasing@hampton1.com)



**HAMPTON**  
ENTERPRISES  
PROPERTIES & CONSTRUCTION

*Because Relationships Really Do Matter*

Hampton Enterprises - Properties & Construction

(402) 489-8858

[hampton1.com](http://hampton1.com)

3400 Plantation Drive, Suite 110 • Lincoln, NE 68516

