

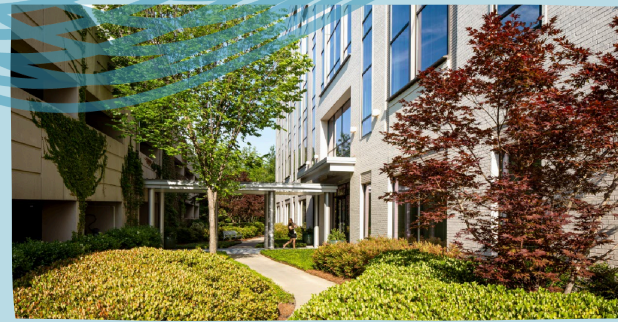


**SUITE 240-7,323 SF**

## 3700 GLENWOOD

3700 GLENWOOD AVENUE, RALEIGH, NC

- \$41.00/RSF Full-Service
- Available February 1, 2026
- Tenant Improvement Allowance – Negotiable
- Free covered parking available in the attached parking deck
- Prime location just inside the Beltline, only 10 minutes from Downtown Raleigh
- Convenient access to RTP and RDU International Airport
- Direct connection to the Raleigh Greenway with free bike share access via the Movatic app
- Scenic, tree-lined street with connecting sidewalks for a walkable environment
- Modern fitness center and on-site shower facilities for tenant wellness
- Professional on-site property management and maintenance for responsive service
- In-building amenities include a coffee shop and a full-service branch bank
- Walkable Retail – featuring a curated selection of vibrant retailers to include:



**FLOWCORPS** Izakaya & Monya Ramen

 **REGIONS BANK**

SUSHI  
**MON**  
Japanese Restaurant

THE  
**IRON OAKS**

**LADYFINGERS**  
MARKET & EATERY

 quarter note coffee

**NAPA**  
Bistro & Wine Bar

 **Village Juice & Kitchen**

**Contact us today for more details!**

**Wendy Nabors**

wnabors@grubbventures.com  
O: 919.786.9905 C: 919.395.0660

**Morgan Bowie**

mbowie@grubbventures.com  
O: 919.786.9905 C: 540.241.0153

919-786-9905

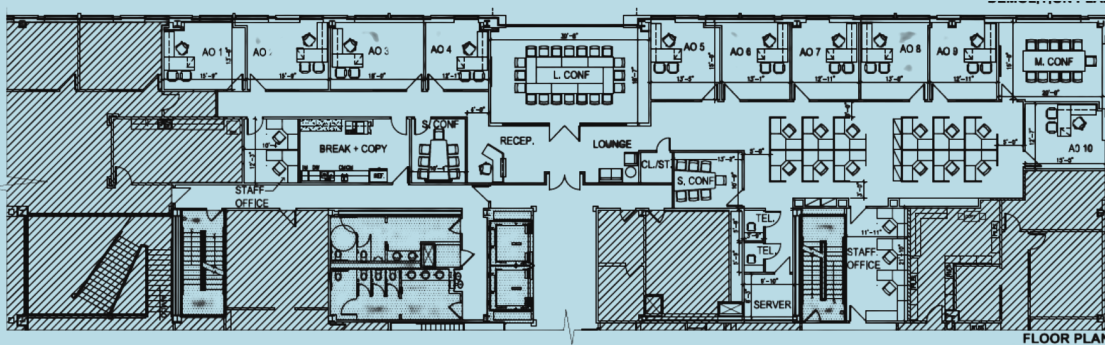
[www.glenwoodplace.com](http://www.glenwoodplace.com)

@glenwoodplace

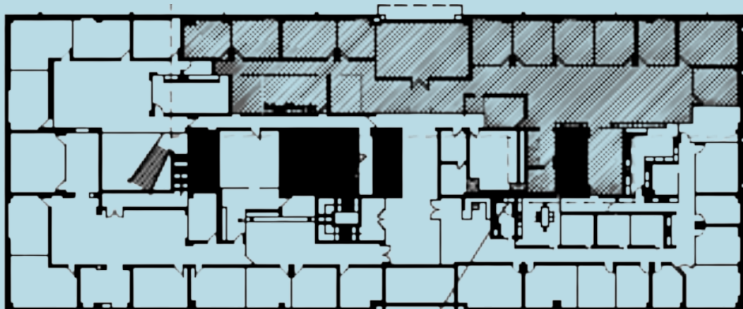


**SUITE 240- 7,323 SF**

## FLOOR PLAN



## KEY PLAN



**Contact us today for more details!**

**Wendy Nabors**

wnabors@grubbventures.com  
 O: 919.786.9905 C: 919.395.0660

**Morgan Bowie**

mbowie@grubbventures.com  
 O: 919.786.9905 C: 540.241.0153

**919-786-9905**

[www.glenwoodplace.com](http://www.glenwoodplace.com)

@glenwoodplace