

FOR LEASE

±20,000 SF OR ±7,735 SF



620630
S CLARENCE STREET

 CUSHMAN & WAKEFIELD
GILL | BURNS | YOO



HIGHLIGHTS

Functional Warehouse with
Dock High Loading

Ample Parking Available in 2 Large Lots

Immediate Access to Freeways
(101, 10, 60, 5)

Next to Ace Mission, East End,
Apple, Hubble studios

Adjacent to the Arts District



PARKING

630

620

CLARENGEST

PARKING

620 S CLARENCE



±20,000 SF
TOTAL BUILDING



YES
(CALL FOR INFO)
PARKING



±1,500 SF
OFFICE SPACE



YES
SPRINKLERED



3 DH
LOADING



14'
CLEAR HEIGHT



400 AMPS
POWER



M2
ZONING



630 S CLARENCE



±7,735 SF
TOTAL BUILDING



YES
(CALL FOR INFO)
PARKING



±1,000 SF
OFFICE SPACE



YES
SPRINKLERED



1 DH / 4 GL
LOADING



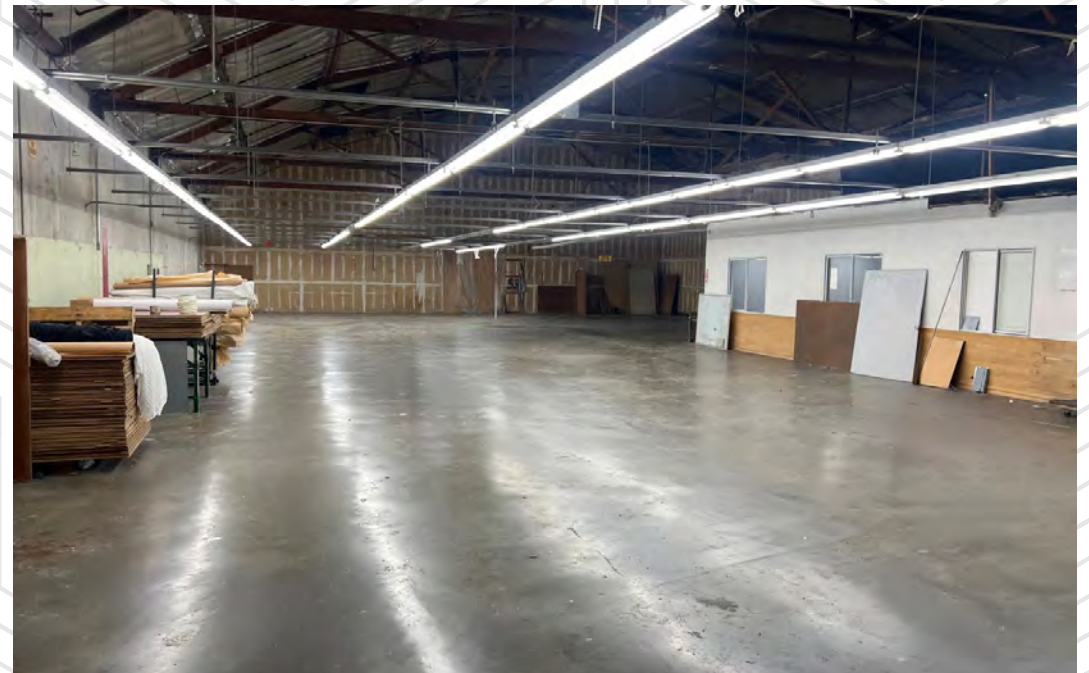
14'
CLEAR HEIGHT



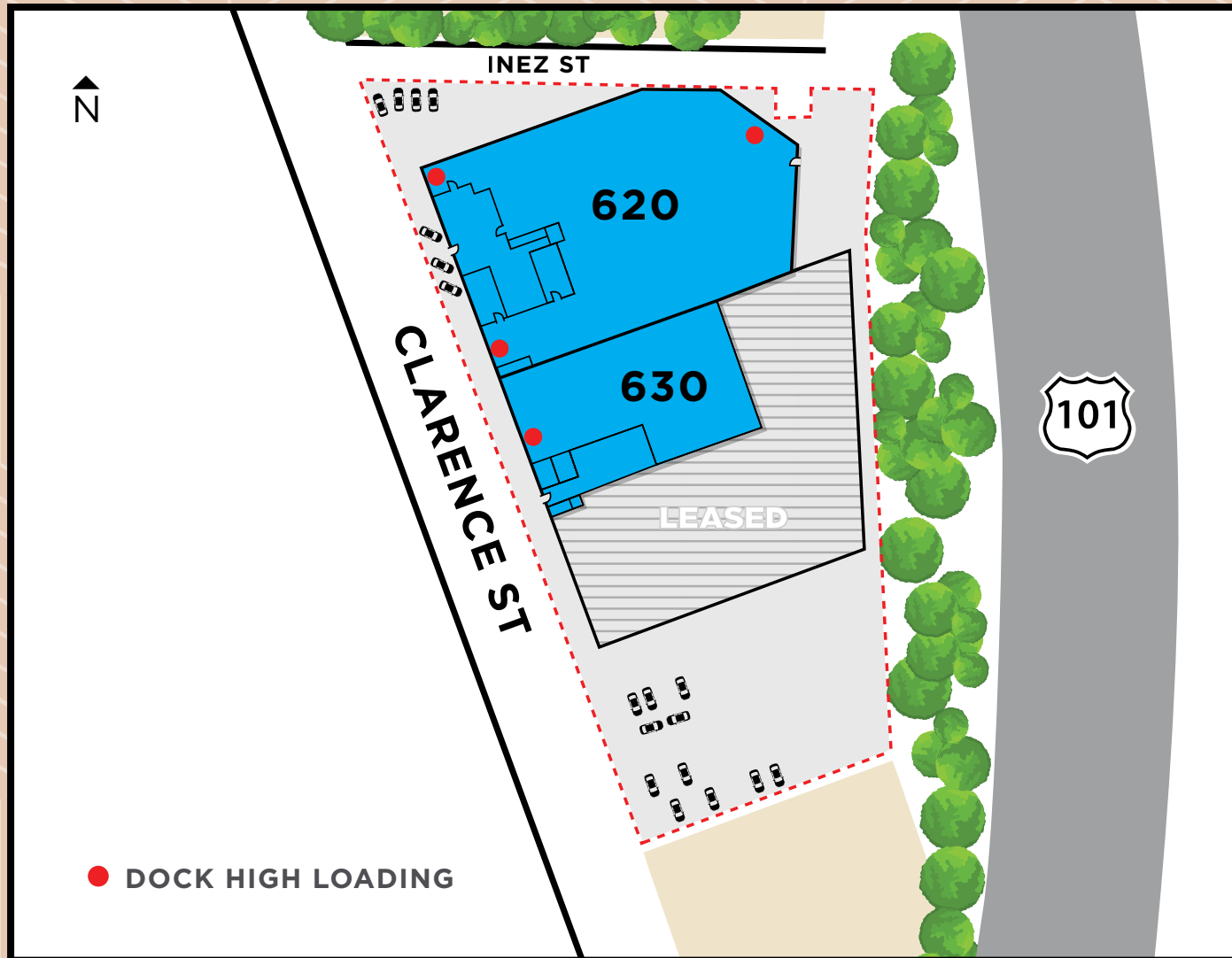
400 AMPS
POWER



M2
ZONING



SITE PLAN



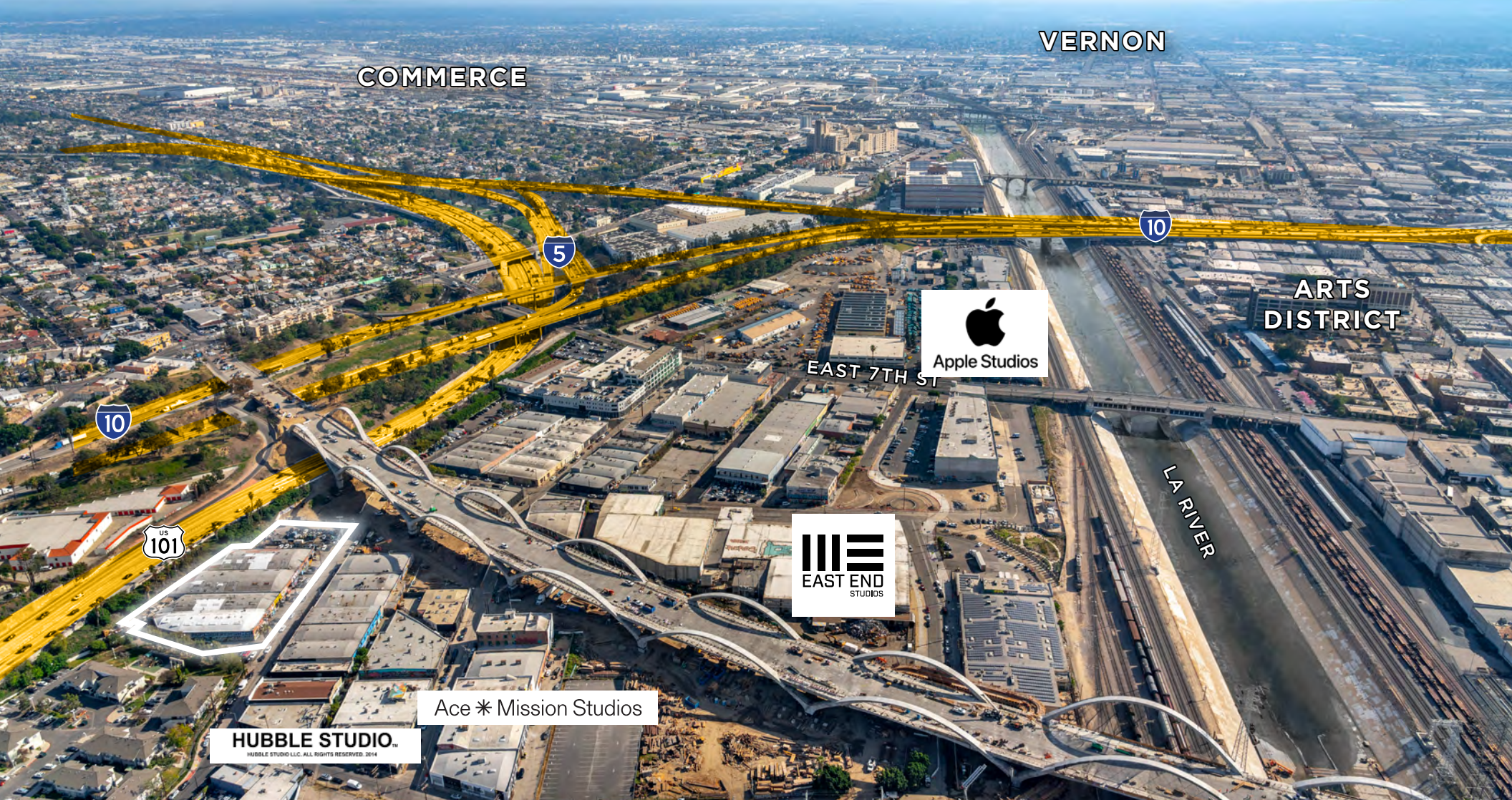
*Please note the above are not exact or to scale - For Discussion Puposes Only.

BRANDON GILL
Executive Director
+1 213 629 6528
brandon.gill@cushwake.com
CA LIC 01262330

BRANDON BURNS
Executive Director
+1 213 629 6541
brandon.burns@cushwake.com
CA LIC 01194796

JAE YOO
Executive Director
+1 213 629 6551
jae.yoo@cushwake.com
CA LIC 01503567

DILLON KNEAFSEY
Associate
+1 213 629 6519
dillon.kneafsey@cushwake.com
CA LIC 02439066



©2026 Cushman & Wakefield. All rights reserved. The material in this presentation has been prepared solely for information purposes, and is strictly confidential. Any disclosure, use, copying or circulation of this presentation (or the information contained within it) is strictly prohibited, unless you have obtained Cushman & Wakefield's prior written consent. The views expressed in this presentation are the views of the author and do not necessarily reflect the views of Cushman & Wakefield. Neither this presentation nor any part of it shall form the basis of, or be relied upon in connection with any offer, or act as an inducement to enter into any contract or commitment whatsoever. NO REPRESENTATION OR WARRANTY IS GIVEN, EXPRESS OR IMPLIED, AS TO THE ACCURACY OF THE INFORMATION CONTAINED WITHIN THIS PRESENTATION, AND CUSHMAN & WAKEFIELD IS UNDER NO OBLIGATION TO SUBSEQUENTLY CORRECT IT IN THE EVENT OF ERRORS.