



2150 Parkes Dr.

49,959 SF

AGENT
Peter Balyeat

PHONE
773.307.5540

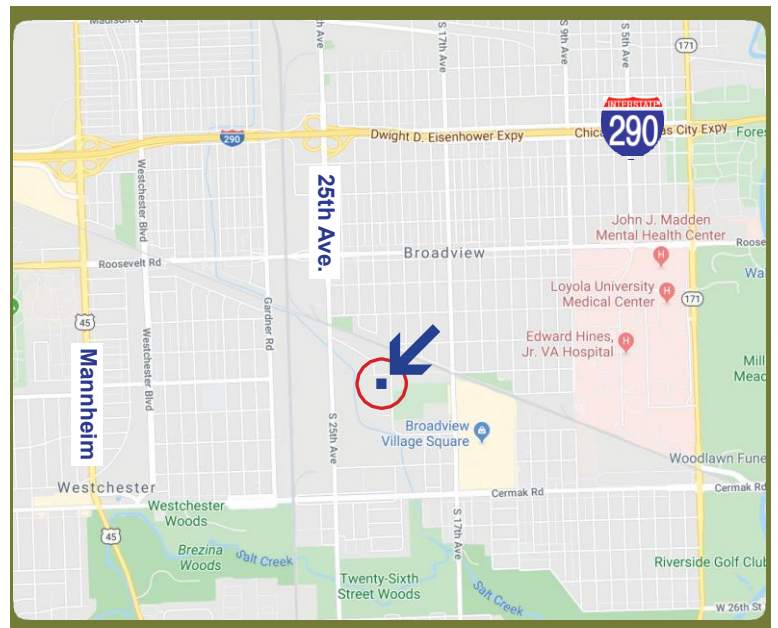
EMAIL
peterb@kormanlederer.com

AGENT
Harley Korman

PHONE
847.205.4364

EMAIL
hkorman@kormanlederer.com

- 3,000 square foot office
- 18' ceiling height
- Three (3) interior docks
- One (1) drive-in door
- Ample parking
- 1,200 amps
- Minutes from I-290 interchange

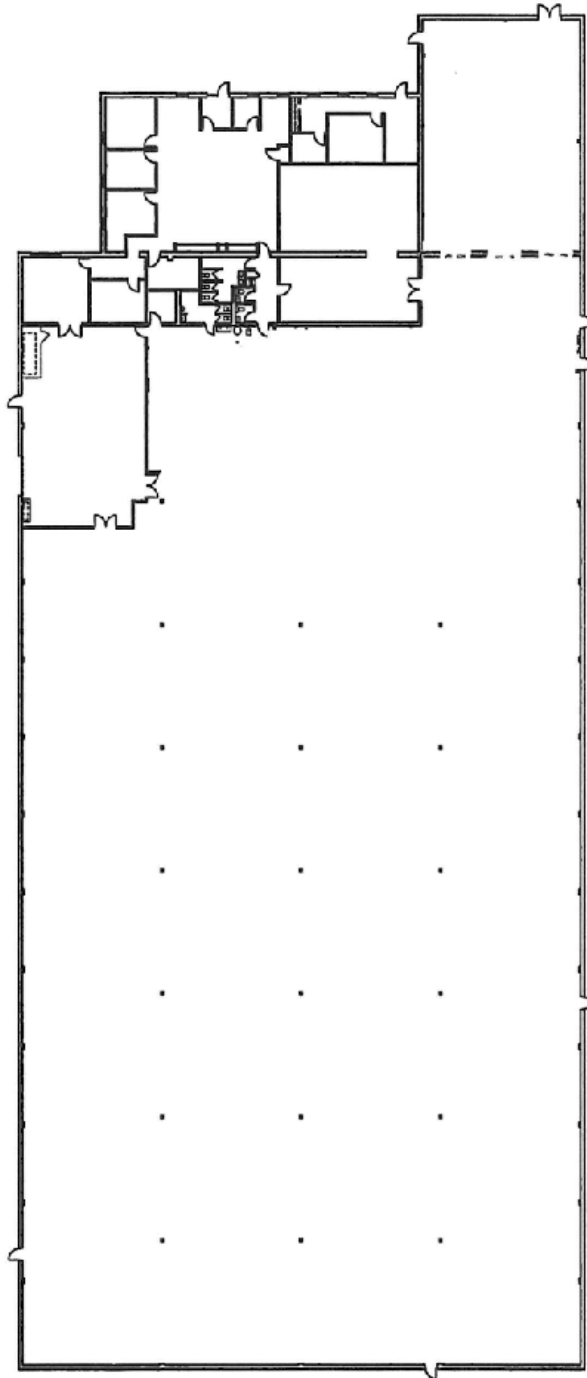


All information herein is from sources reliable but not guaranteed accurate. Subject to errors, omissions, and to change of price and terms, prior to sale or lease, all without notice.

2150 Parkes Dr.

49,959 SF

AVAILABLE

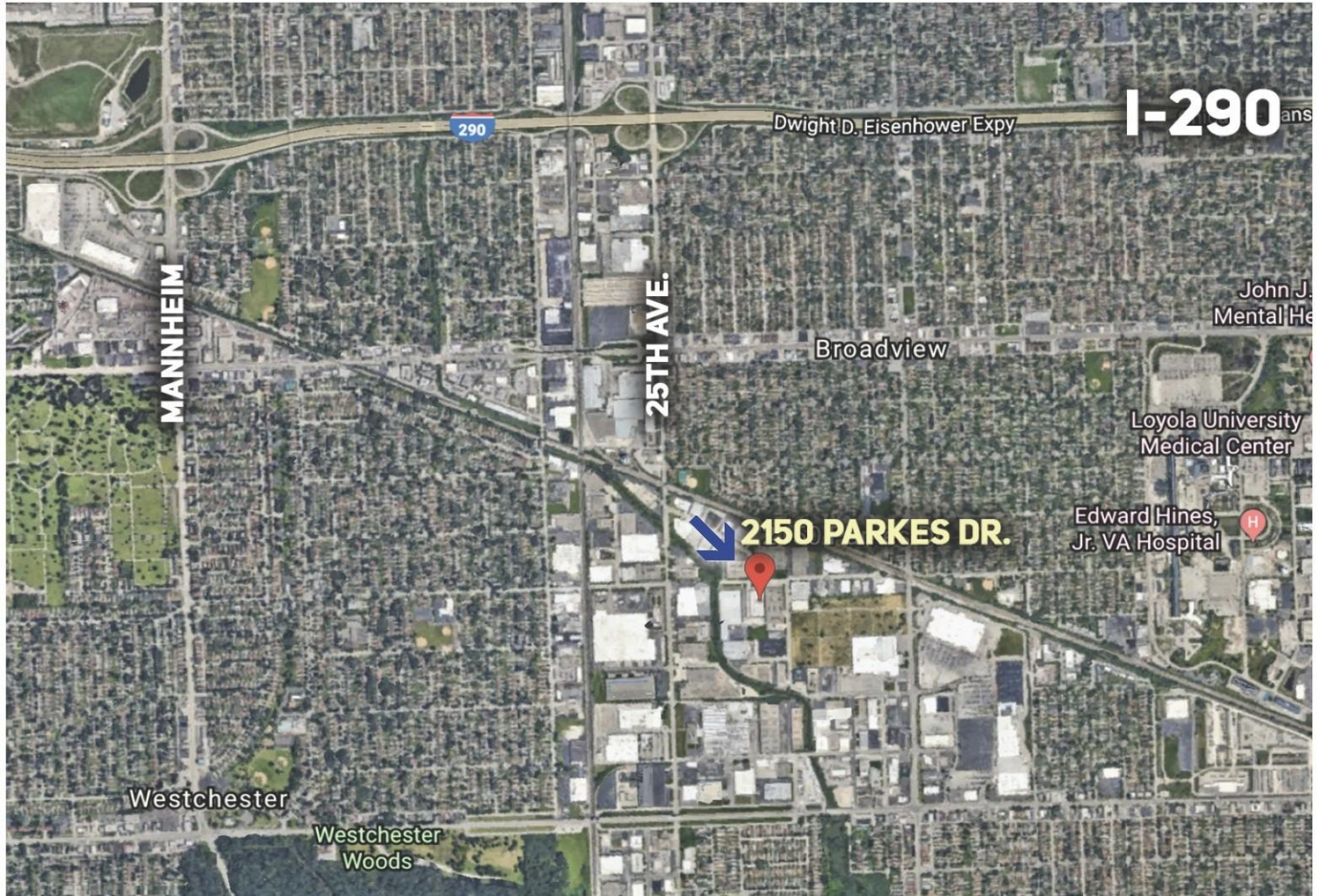


All information herein is from sources reliable but not guaranteed accurate. Subject to errors, omissions, and to change of price and terms, prior to sale or lease, all without notice.

2150 Parkes Dr.

49,959 SF

AVAILABLE



All information herein is from sources reliable but not guaranteed accurate. Subject to errors, omissions, and to change of price and terms, prior to sale or lease, all without notice.