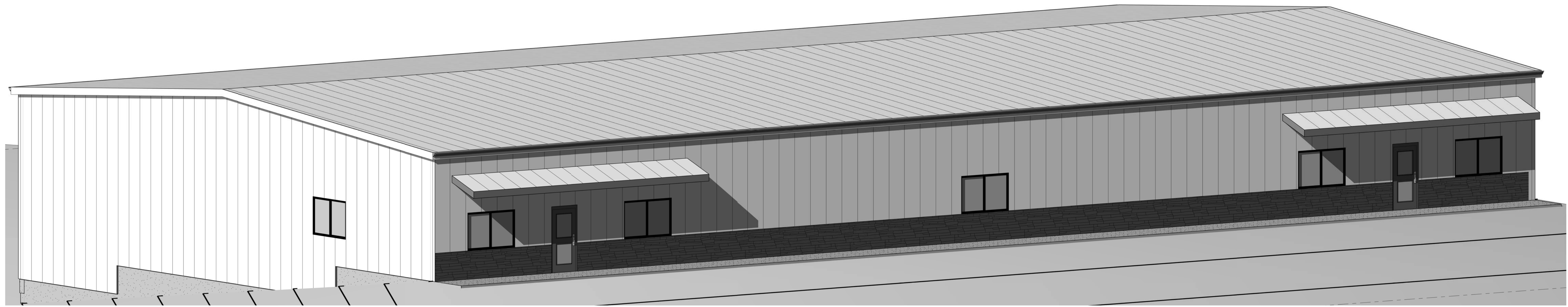


CP GROUP LLC PRIDE FITNESS CENTER SOBBIE ROAD PLEASANT VALLEY, MO 64068

INDEX OF DRAWINGS

Sheet Number	Sheet Name
A001	COVER & INDEX
A010	BUILDING CODES
A011	LIFE SAFETY PLANS
A101	FIRST FLOOR PLAN
A102	SECOND FLOOR PLAN
A103	ROOF PLAN
A104	REFLECTED CEILING PLANS
A201	BUILDING ELEVATIONS
A202	BUILDING ELEVATIONS
A302	BUILDING SECTIONS
A401	WALL SECTIONS & SCHEDULES
A501	PARTITION TYPES



HERMAN DESIGN+BUILD LLC
 A. Joel herman - Owner/Architect
 PO Box 1033 Kearney, MO 64060
 P: 816.294.0495
 www.hermandesignbuild.com

CP GROUP LLC - PRIDE FITNESS CENTER
 Sobbie Road Pleasant Valley, MO Clay County

Project #
2115

Date
04-06-2022

COVER &
INDEX

A001
Scale

ISSUED FOR GRADING PERMIT ONLY
 THE INFORMATION ON THIS DOCUMENT IS
 PRELIMINARY OR INCOMPLETE, NOT FOR
 CONSTRUCTION, RECORDING PURPOSES,
 OR IMPLEMENTATION

5/24/2022 8:54:31 PM

COPYRIGHT HERMAN DESIGN+BUILD LLC 2022

BUILDING CODE AND LIFE SAFETY CRITERIA

CITY OF PLEASANT VALLEY MISSOURI APPLICABLE BUILDING CODES:

INTERNATIONAL BUILDING CODE, EDITION 2012, ISBN: 978-1-60983-040-3, AS PUBLISHED BY THE INTERNATIONAL CODE COUNCIL.
INTERNATIONAL FIRE CODE, EDITION 2012, ISBN: 978-1-60983-046-5, AS PUBLISHED BY THE INTERNATIONAL CODE COUNCIL.
INTERNATIONAL MECHANICAL CODE, EDITION 2012, ISBN: 978-1-60983-051-9, AS PUBLISHED BY THE INTERNATIONAL CODE COUNCIL.
INTERNATIONAL PLUMBING CODE, EDITION 2012, ISBN: 978-1-60983-053-3, AS PUBLISHED BY THE INTERNATIONAL CODE COUNCIL.
INTERNATIONAL FUEL GAS CODE, EDITION 2012, ISBN: 978-1-60983-049-6, AS PUBLISHED BY THE INTERNATIONAL CODE COUNCIL.
INTERNATIONAL ENERGY CONSERVATION CODE, EDITION 2012, ISBN: 978-1-60983-058-8, AS PUBLISHED BY THE INTERNATIONAL CODE COUNCIL.
NATIONAL ELECTRICAL CODE, EDITION 2011, ISBN: 978-0-877-65916-7, AS PUBLISHED BY THE NATIONAL FIRE PROTECTION ASSOCIATION.

OCCUPANCY CLASSIFICATION

ASSEMBLY GROUP A-3 (GYMNASIUM WITHOUT SPECTATOR SEATING)

BUILDING OFFICIAL HAS SET OCCUPANCY:

45 OCCUPANTS TOTAL
40 CUSTOMERS
5 EMPLOYEES

CONSTRUCTION TYPE

TYPE III-A PROTECTED COMBUSTIBLE
PRIMARY STRUCTURAL FRAME - NON COMBUSTIBLE
BEARING WALLS - 1 HOUR
NON-BEARING WALLS AND PARTITIONS INTERIOR - N/A
FLOOR CONSTRUCTION (SECONDARY) - 1 HOUR
ROOF CONSTRUCTION - NON COMBUSTIBLE
MEETS OR EXCEEDS IBC TABLE 601

BUILDING AREA AND HEIGHT

ALLOWABLE HEIGHTS AND AREAS - TABLE 503 - 3/14000
OCCUPANCY GROUP = A-3
ALLOWABLE HEIGHT = 65FT
ALLOWABLE STORES / AREA PER FLOOR = 3/14,000

ACTUAL AREA - 10,910 SF
FIRST FLOOR (PRIDE FITNESS OCCUPIED) = 5950 SF
SECOND FLOOR (PRIDE FITNESS OCCUPIED) = 510 SF
TENANT AREA (UNOCCUPIED) = 4450 SF
ACTUAL HEIGHT = 25FT

FIRE SPRINKLER SYSTEM

A FIRE SPRINKLER SYSTEM IS NOT REQUIRED PER IBC 903.2.1.3

GROUP A-3
FIRE AREA IS LESS THAN 12,000 (10,910)
OCCUPANT LOAD IS LESS THAN 300 (45)
FIRE AREA IS ON LEVEL OF EXIT DISCHARGE (1ST FLOOR AT GRADE ON EAST, 2ND FLOOR AT GRADE ON WEST)

FIRE ALARM SYSTEM

A FIRE ALARM SYSTEM IS NOT REQUIRED PER IBC 907.2.1

FIRE SEPARATION FOR EXTERIOR WALLS

EXTERIOR WALL ARE MORE THAN 30FT (TYPE IIIA CONSTRUCTION) FROM OTHER BUILDINGS ON SITE. FIRE RATING OF BUILDING IS NOT REQUIRED

ARRANGEMENT OF EXITS

OCCUPANCY IS LESS THAN 49 SO ONLY ONE EXIT IS REQUIRED PER IBC TABLE 1015.1. ACTUAL NUMBER OF EXITS = 2

EXIT TRAVEL DISTANCE

MAXIMUM EXIT ACCESS TRAVEL DISTANCE FOR OCCUPANCY A, WITHOUT SPRINKLER SYSTEM = 200 FEET
-PER IBC TABLE 1016.2
MAXIMUM COMMON PATH OF EGRESS TRAVEL FOR OCCUPANCY A, WITHOUT SPRINKLER SYSTEM = 75 FEET
-PER IBC TABLE 1014.3

MINIMUM EXIT WIDTHS

PASSAGEWAYS = 44 INCHES PER IBC 1023.2
MINIMUM DOOR WIDTH - 32 INCHES PER IBC 1008.1

PLUMBING FIXTURES

WATER CLOSETS

INTERIOR WALL AND FINISH REQUIREMENTS

OCCUPANCY GROUP A-3 - NON SPRINKLERED
INTERIOR EXIT STAIRWAYS - CLASS A
CORRIDORS - N/A
ROOMS AND ENCLOSED SPACES - CLASS B
PER IBC TABLE 803.9

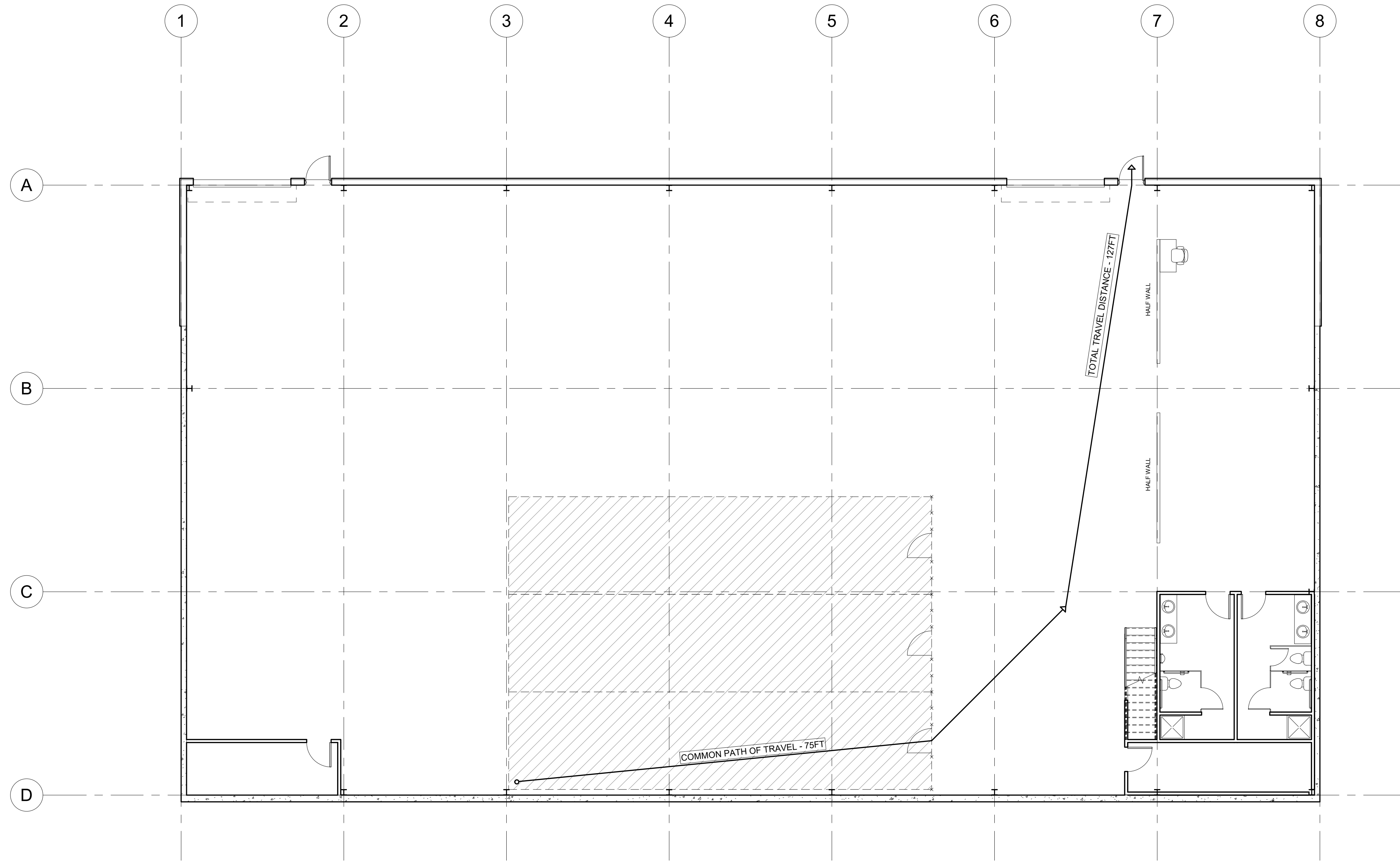
ROOF COVERING REQUIREMENTS

TYPE IIIA - CLASS B
PER IBC TABLE 1505.1

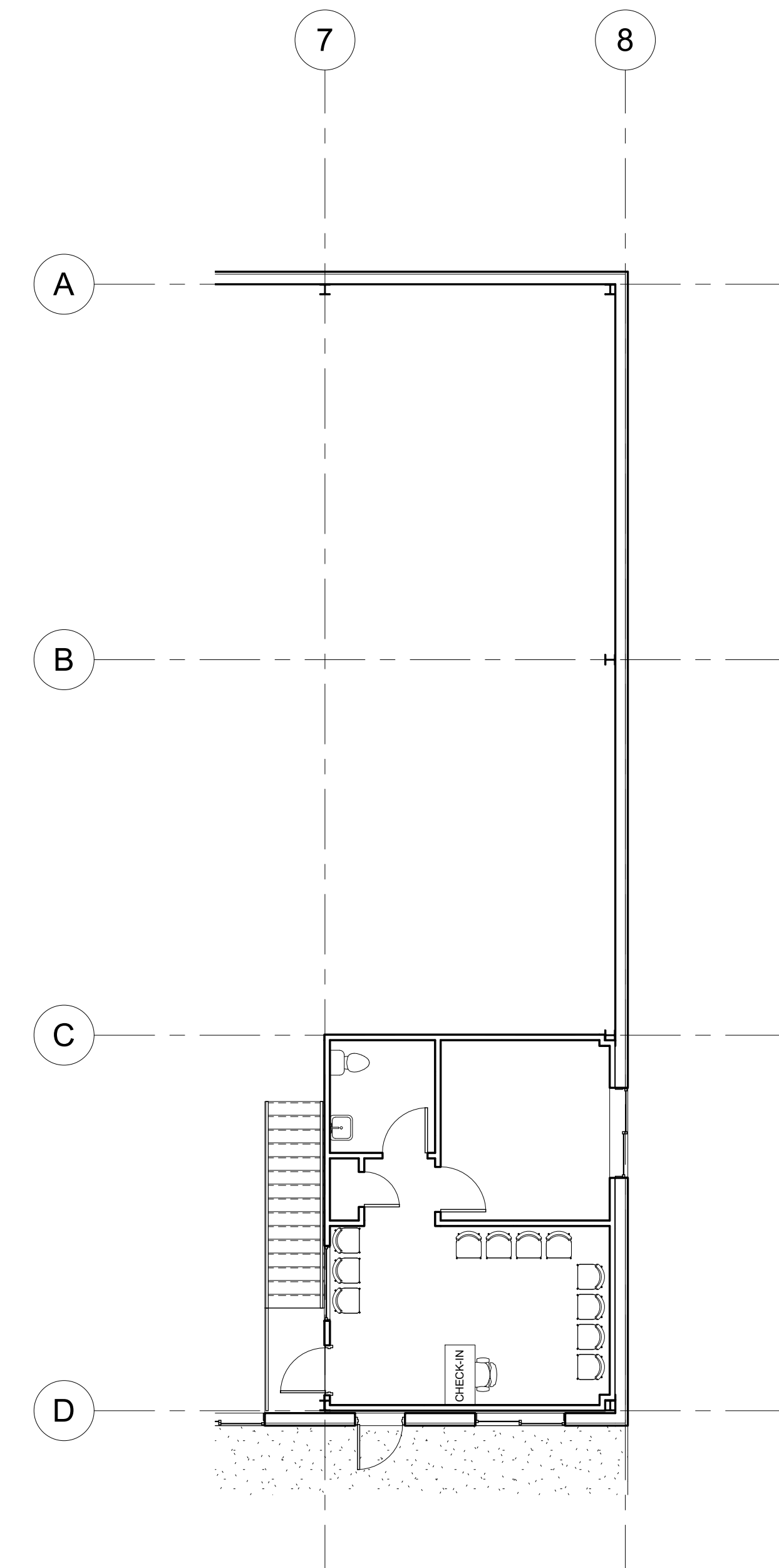
FIRE EXTINGUISHER REQUIREMENTS

CLASS A HAZARDS (ORDINARY HAZARD OCCUPANCY)
MINIMUM TRAVEL DISTANCE TO FIRE EXTINGUISHER = 75FT
MAXIMUM FLOOR AREA PER FIRE EXTINGUISHER = 11,250 SF
MAXIMUM FIRE EXTINGUISHER RATING - 2A CLASS ABC
MAXIMUM FLOOR AREA PER UNIT OF A = 1500 SF
PER IBC TABLE 906.3(1)

ISSUED FOR GRADING PERMIT ONLY
THE INFORMATION ON THIS DOCUMENT IS
PRELIMINARY OR INCOMPLETE, NOT FOR
CONSTRUCTION, RECORDING PURPOSES,
OR IMPLEMENTATION



FIRST FLOOR - LIFE SAFETY
1/8" = 1'-0"

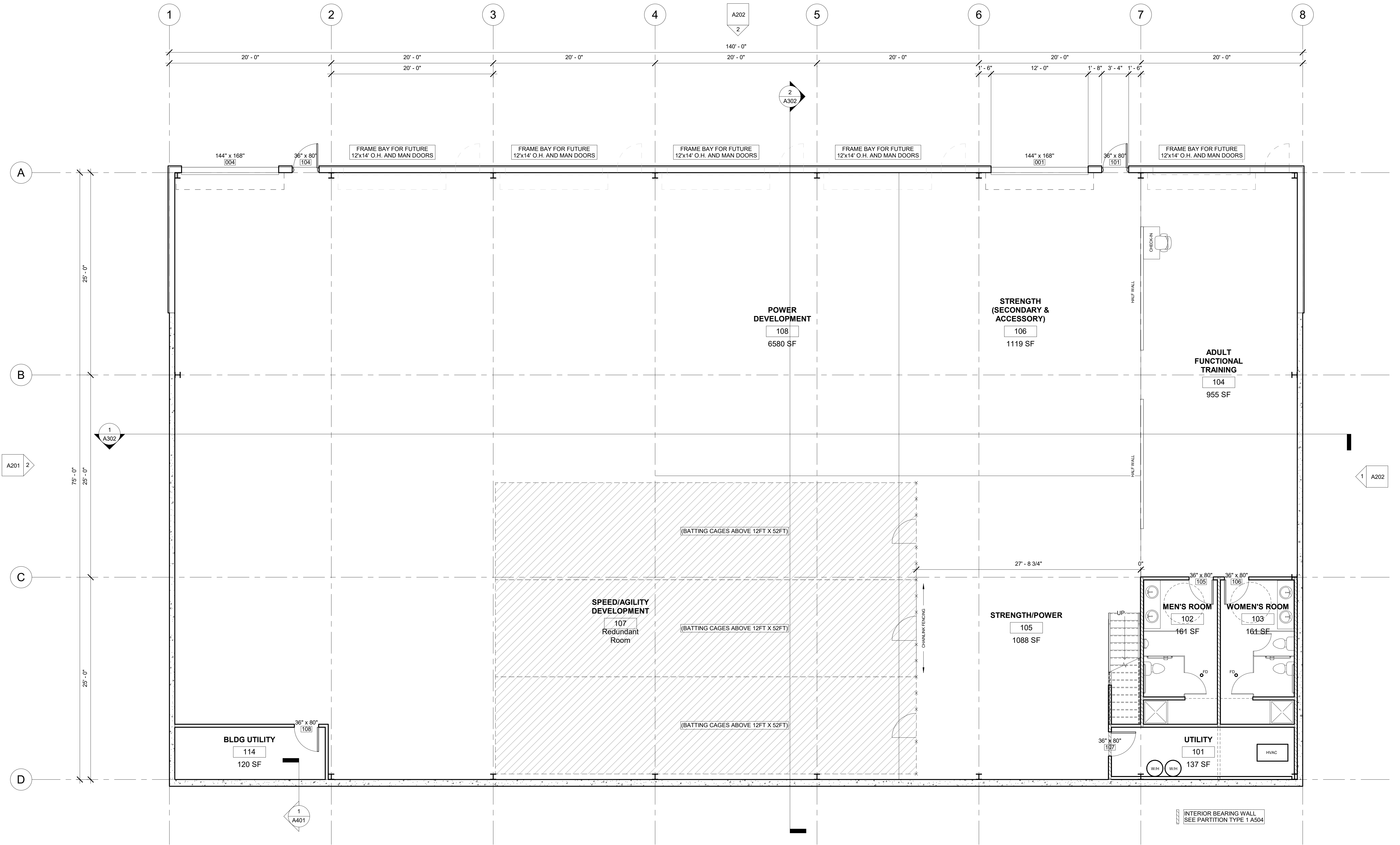


SECOND FLOOR - LIFE SAFETY
1/8" = 1'-0"

GENERAL NOTES

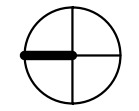
1. REFER TO A010 FOR BUILDING CODE ANALYSIS AND LIFE SAFETY NARRATIVE
2. MECHANICAL, ELECTRICAL, PLUMBING, FIRE EXTINGUISHERS, EXIT SIGNAGE, AND ALL OTHER DISCIPLINE INFORMATION TO BE VERIFIED BY CONTRACTOR AND INSPECTED / APPROVED BY THE AUTHORITY HAVING JURISDICTION

ISSUED FOR GRADING PERMIT ONLY
THE INFORMATION ON THIS DOCUMENT IS
PRELIMINARY OR INCOMPLETE, NOT FOR
CONSTRUCTION, RECORDING PURPOSES,
OR IMPLEMENTATION



FIRST FLOOR - 10400 SF
 3/16" = 1'-0"

TOTAL AREA - 10,910 SF
 FIRST FLOOR (PRIDE FITNESS OCCUPIED) = 5950 SF
 SECOND FLOOR (PRIDE FITNESS OCCUPIED) = 510 SF
 FIRST FLOOR TENANT AREA (UNOCCUPIED) = 4450 SF



ISSUED FOR GRADING PERMIT ONLY
 THE INFORMATION ON THIS DOCUMENT IS
 PRELIMINARY OR INCOMPLETE, NOT FOR
 CONSTRUCTION, RECORDING PURPOSES,
 OR IMPLEMENTATION

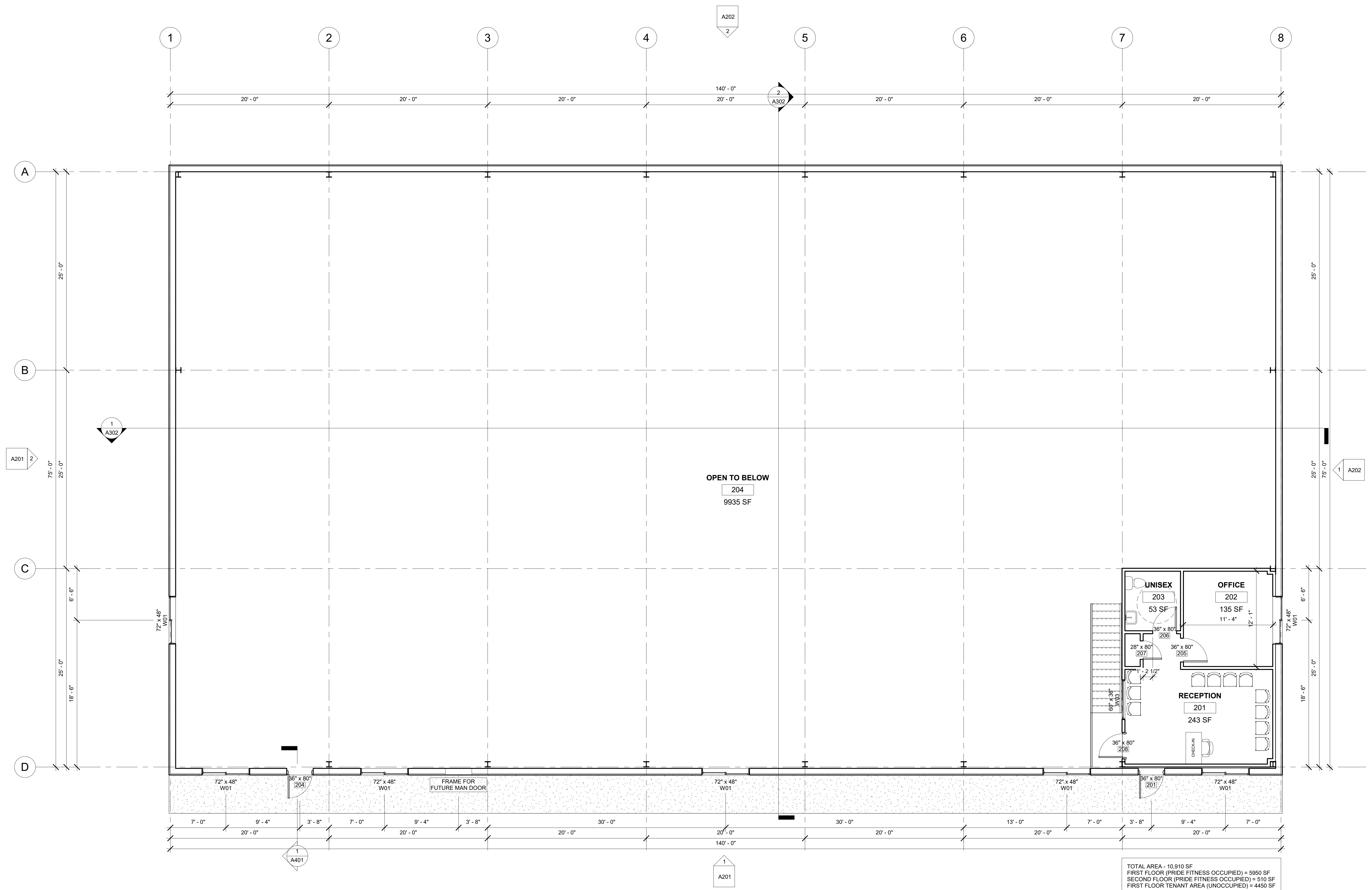
Project #
2115

Date
04-06-2022

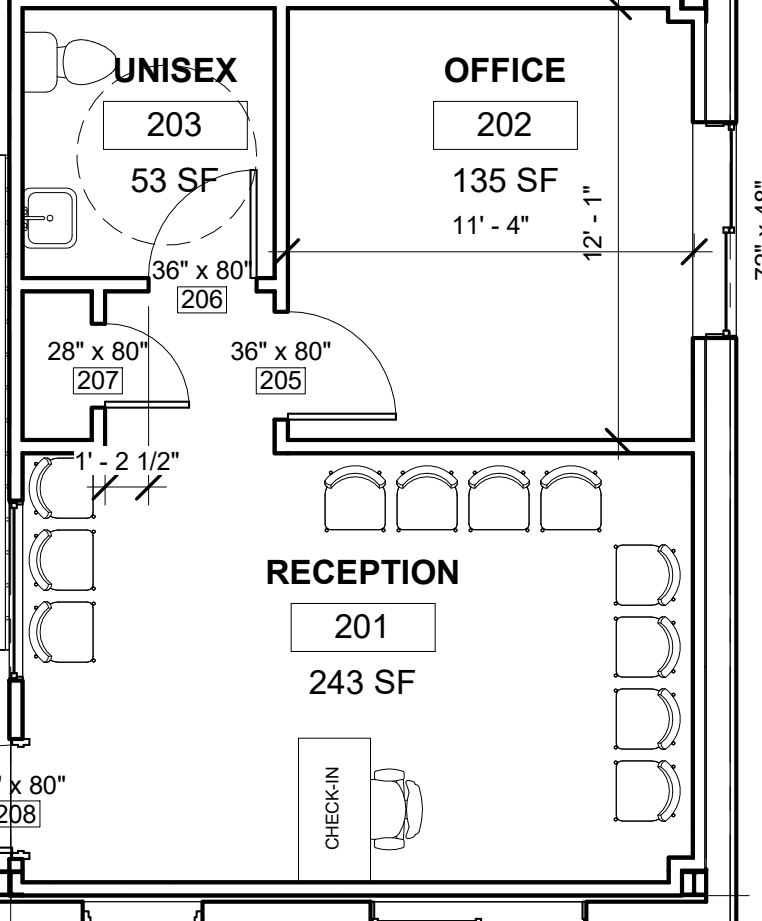
FIRST FLOOR
PLAN

A101
 Scale
 3/16" = 1'-0"

COPYRIGHT HERMAN DESIGN+BUILD LLC 2022



OPEN TO BELOW
 204
 9935 SF



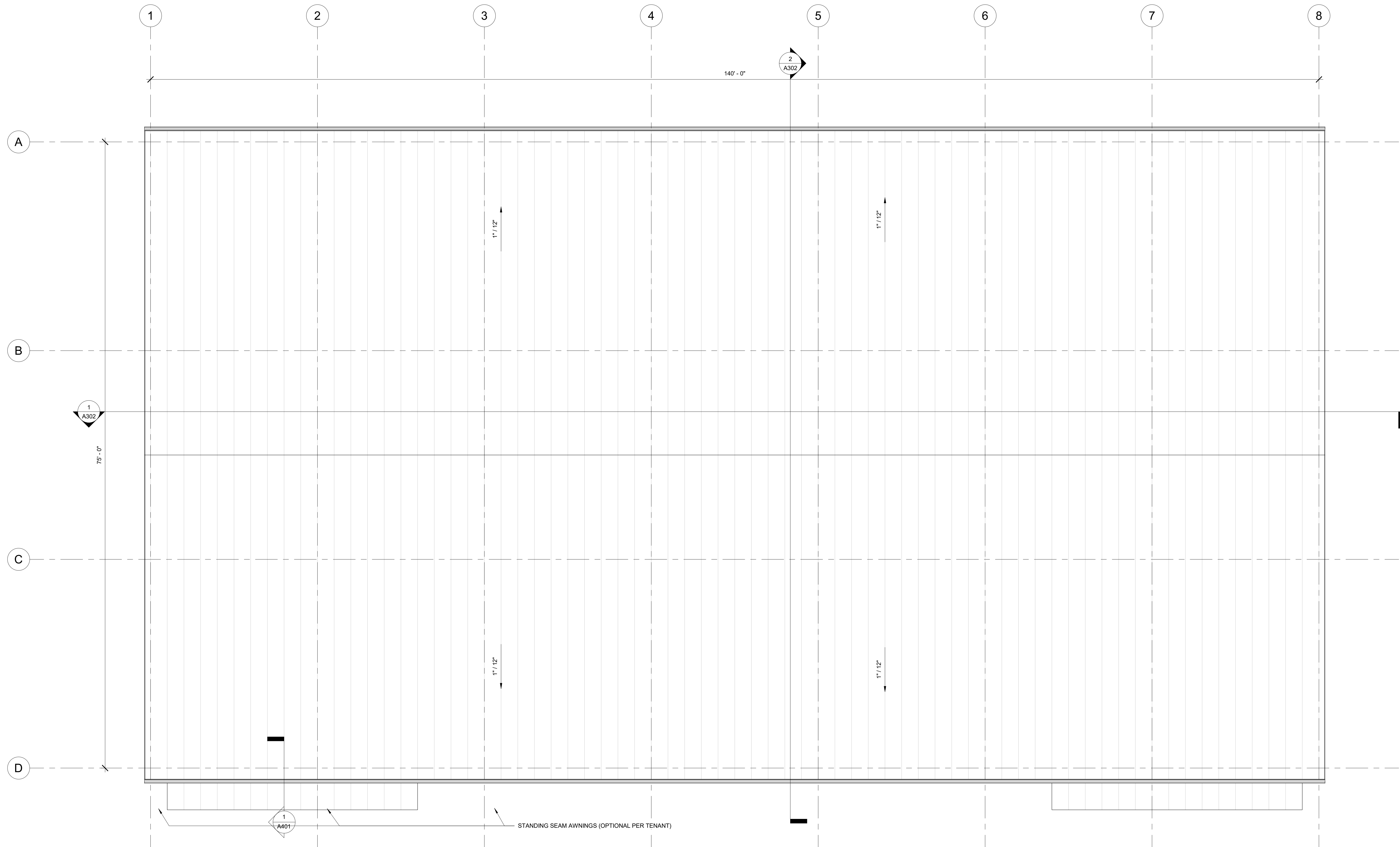
TOTAL AREA - 10,910 SF
 FIRST FLOOR (PRIDE FITNESS OCCUPIED) = 5950 SF
 SECOND FLOOR (PRIDE FITNESS OCCUPIED) = 510 SF
 FIRST FLOOR TENANT AREA (UNOCCUPIED) = 4450 SF

SECOND FLOOR - 510 SF
 3/16" = 1'-0"

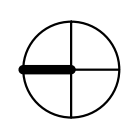
ISSUED FOR GRADING PERMIT ONLY
 THE INFORMATION ON THIS DOCUMENT IS
 PRELIMINARY OR INCOMPLETE, NOT FOR
 CONSTRUCTION, RECORDING PURPOSES,
 OR IMPLEMENTATION

5/24/2022 8:54:32 PM

COPYRIGHT HERMAN DESIGN+BUILD LLC 2022



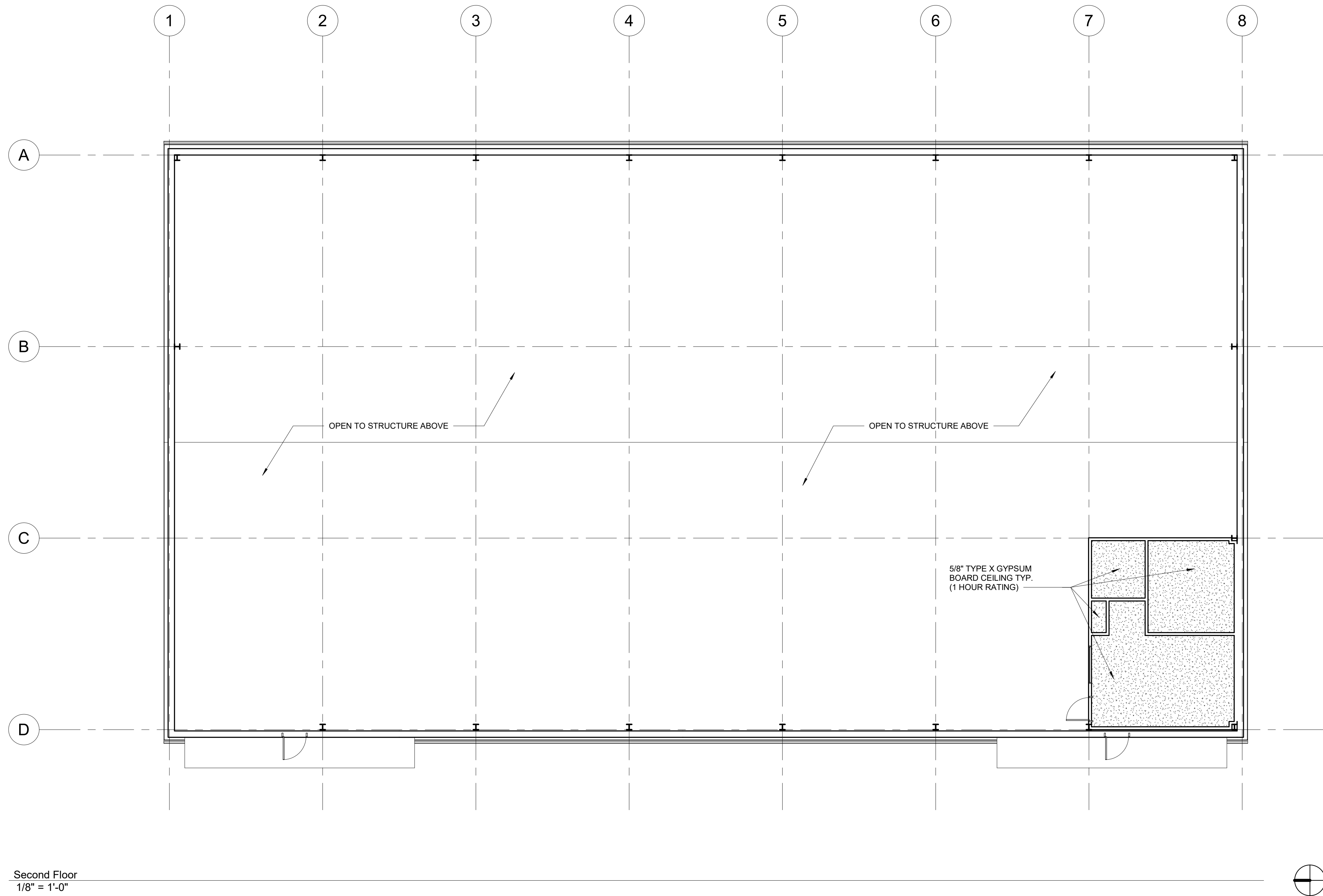
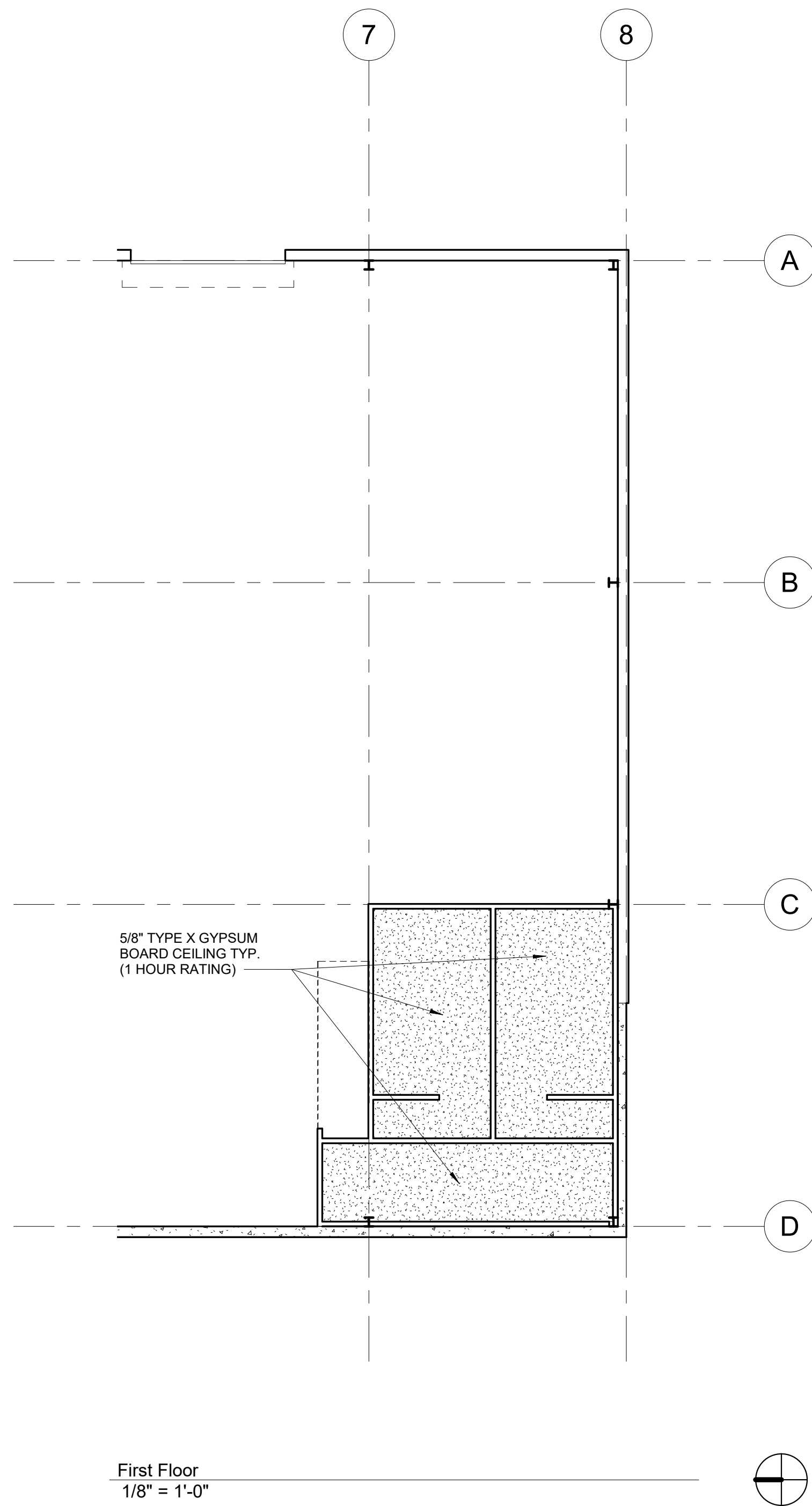
ROOF PLAN
3/16" = 1'-0"



ISSUED FOR GRADING PERMIT ONLY
 THE INFORMATION ON THIS DOCUMENT IS
 PRELIMINARY OR INCOMPLETE, NOT FOR
 CONSTRUCTION, RECORDING PURPOSES,
 OR IMPLEMENTATION

5/24/2022 8:54:33 PM

COPYRIGHT HERMAN DESIGN+BUILD LLC 2022



ISSUED FOR GRADING PERMIT ONLY
 THE INFORMATION ON THIS DOCUMENT IS
 PRELIMINARY OR INCOMPLETE, NOT FOR
 CONSTRUCTION, RECORDING PURPOSES,
 OR IMPLEMENTATION

Project #
2115

Date
04-06-2022

REFLECTED
CEILING
PLANS

A104

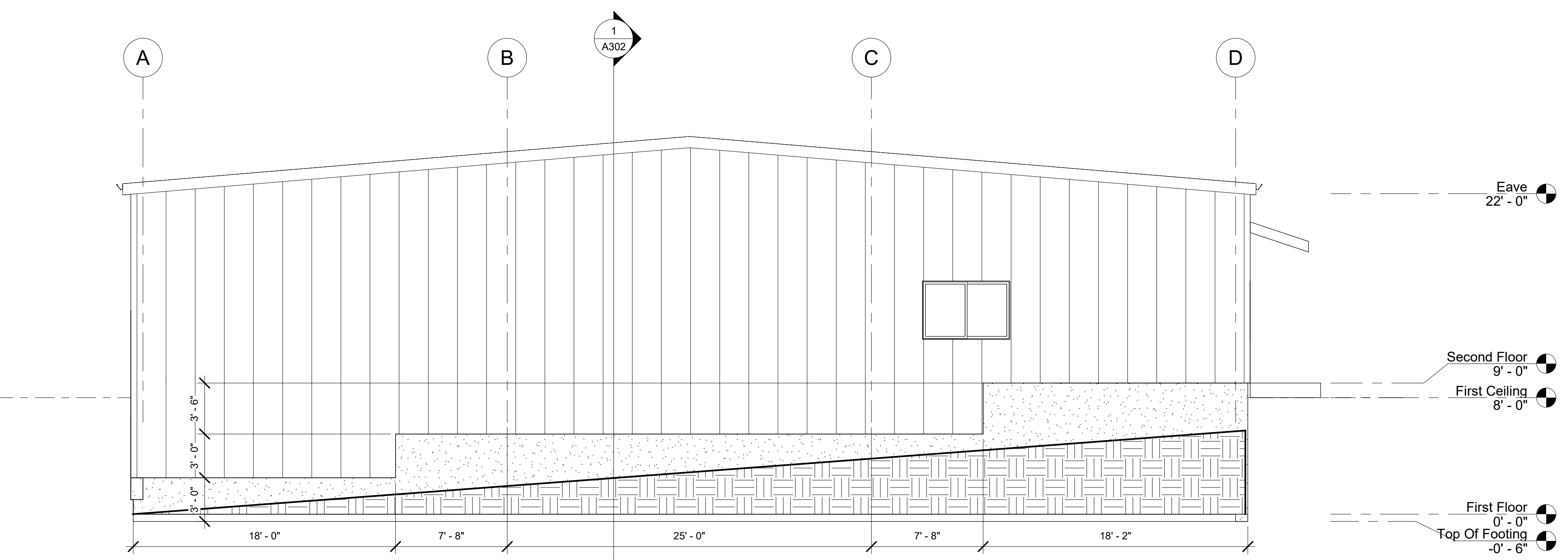
Scale
1/8" = 1'-0"

CP GROUP LLC - PRIDE FITNESS CENTER
 Sobbie Road Pleasant Valley, MO Clay County

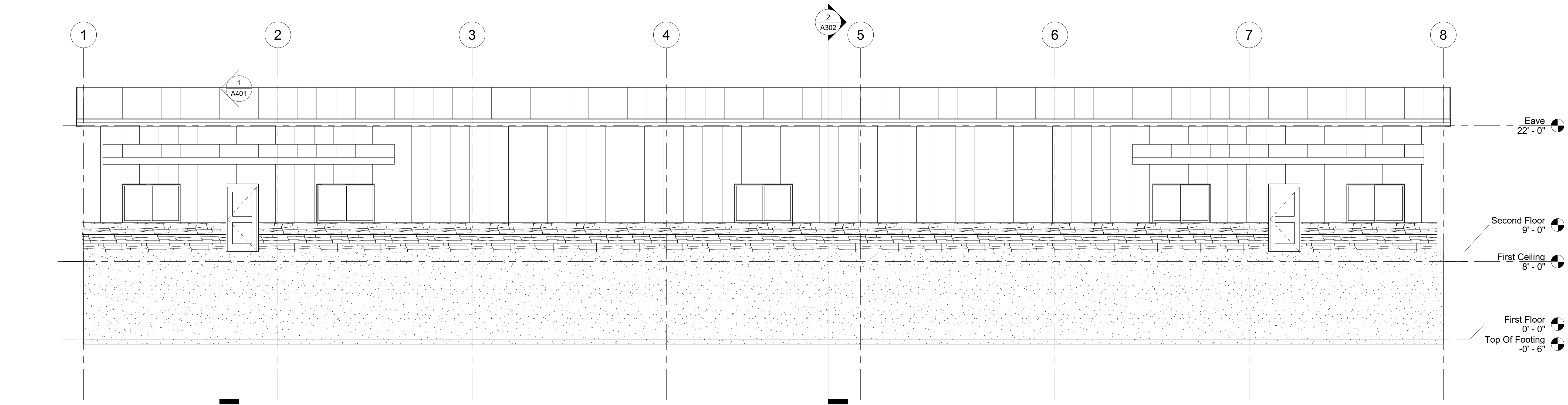
HERMAN DESIGN+BUILD LLC
 A. Joel herman - Owner/Architect
 PO Box 1033 Kearney, MO 64060
 P: 816.294.0495
 www.hermandesignbuild.com



5/24/2022 8:54:33 PM



NORTH ELEVATION
 3/16" = 1'-0"

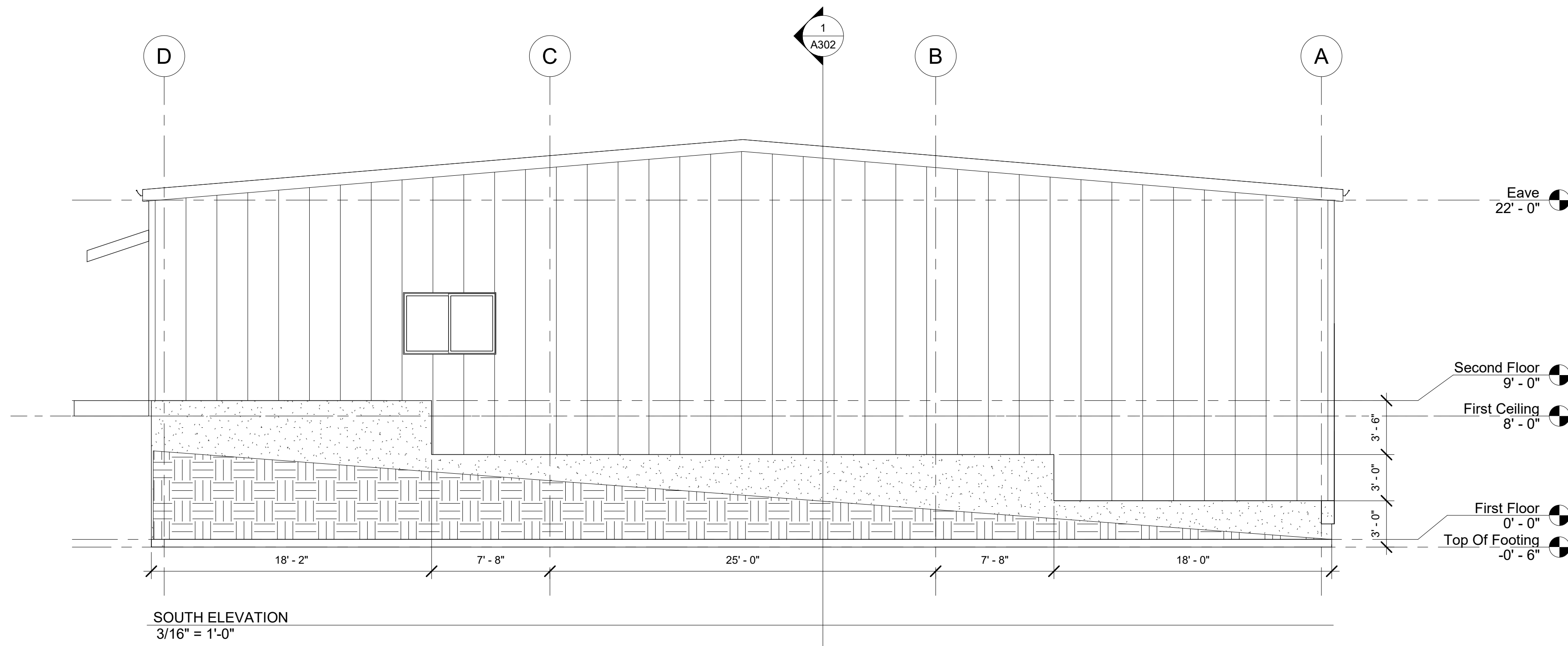


WEST ELEVATION
 3/16" = 1'-0"

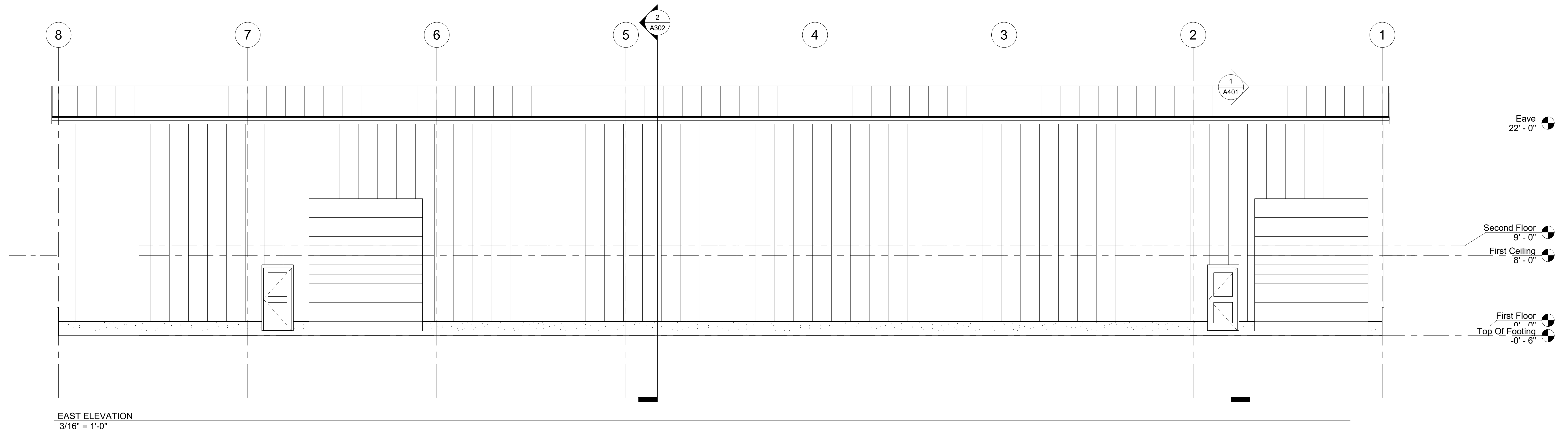
ISSUED FOR GRADING PERMIT ONLY
 THE INFORMATION ON THIS DOCUMENT IS
 PRELIMINARY OR INCOMPLETE, NOT FOR
 CONSTRUCTION, RECORDING PURPOSES,
 OR IMPLEMENTATION

COPYRIGHT HERMAN DESIGN+BUILD LLC 2022

5/24/2022 8:54:34 PM

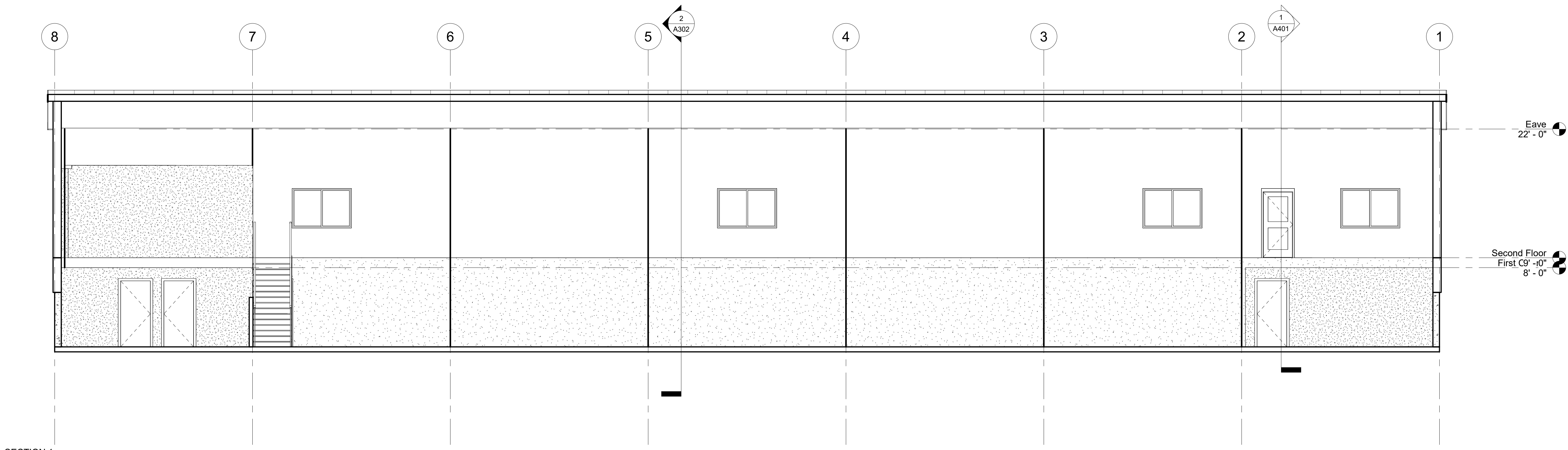


SOUTH ELEVATION
3/16" = 1'-0"

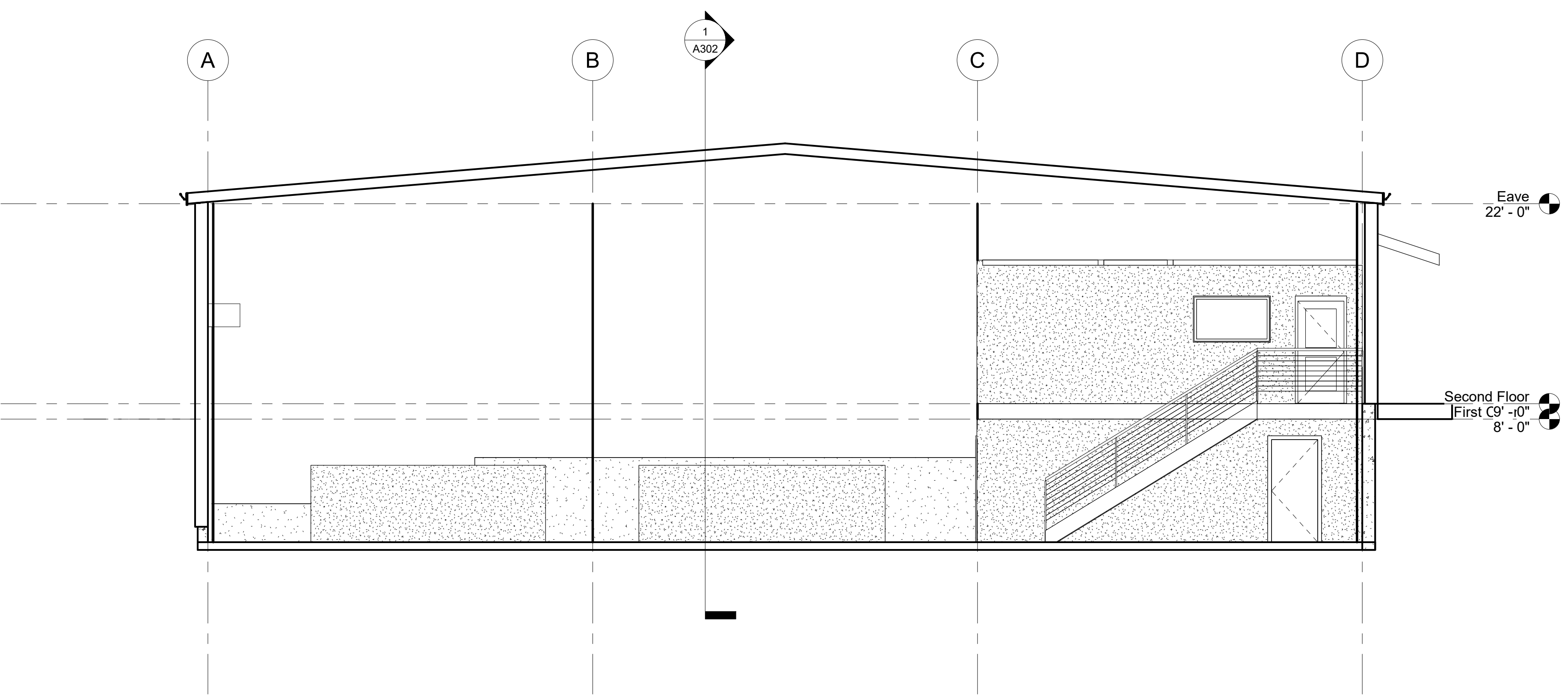


EAST ELEVATION
3/16" = 1'-0"

ISSUED FOR GRADING PERMIT ONLY
 THE INFORMATION ON THIS DOCUMENT IS
 PRELIMINARY OR INCOMPLETE, NOT FOR
 CONSTRUCTION, RECORDING PURPOSES,
 OR IMPLEMENTATION



SECTION 1
 3/16" = 1'-0"



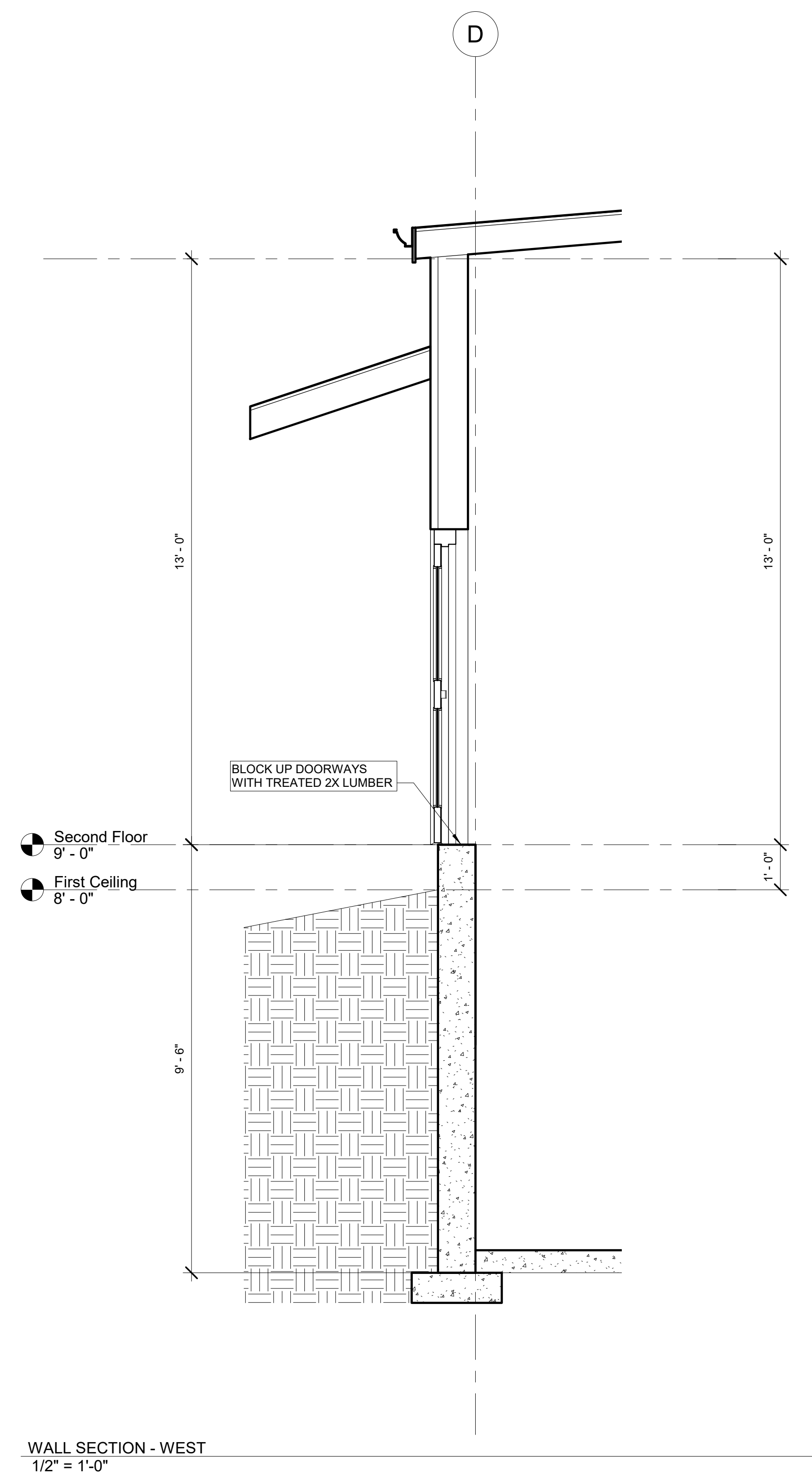
SECTION 2
 3/16" = 1'-0"

ISSUED FOR GRADING PERMIT ONLY
 THE INFORMATION ON THIS DOCUMENT IS
 PRELIMINARY OR INCOMPLETE, NOT FOR
 CONSTRUCTION, RECORDING PURPOSES,
 OR IMPLEMENTATION

COPYRIGHT HERMAN DESIGN+BUILD LLC 2022

Door Schedule				
Level	Door Number	Door Size	Model	Comments
First Floor	001	144" x 168"		
First Floor	004	144" x 168"		
First Floor	101	36" x 80"		
First Floor	104	36" x 80"		
First Floor	105	36" x 80"		
First Floor	106	36" x 80"		
First Floor	107	36" x 80"		
First Floor	108	36" x 80"		
Second Floor	201	36" x 80"		
Second Floor	204	36" x 80"		
Second Floor	205	36" x 80"		
Second Floor	206	36" x 80"		
Second Floor	207	28" x 80"		
Second Floor	208	36" x 80"		

Window Schedule						
Level	Type Mark	Rough Opening		Type	Model	Head Height
		Width	Height			
Second Floor	W01	6' - 0"	4' - 0"	Slider with Trim		7' - 0"
Second Floor	W03	5' - 0"	3' - 0"	Fixed with Trim		7' - 0"



WALL SECTION - WEST
1/2" = 1'-0"

ISSUED FOR GRADING PERMIT ONLY
THE INFORMATION ON THIS DOCUMENT IS
PRELIMINARY OR INCOMPLETE, NOT FOR
CONSTRUCTION, RECORDING PURPOSES,
OR IMPLEMENTATION