

FOR LEASE

multi-tenant Industrial

AVAILABLE - May 2026

**2910 W. BEAVER STREET
Jacksonville, Florida 32254
Manufacture Light - Westside Submarket**

COMING SOON



- ZONED – Industrial Light
- 15,900 sq. ft. - TOTAL
- 4400 sq. ft. – OFFICE
- 11,500 sq. ft - WAREHOUSE
- 14' & 24' CEILING HEIGHTS
- WET SPRINKLER SYSTEM
- (4) GRADE LEVEL DOORS
- (2) DOCK WELLS
- FRONTAGE - W. BEAVER ST.
- TRAFFIC - 15,000 VEHICLES / DAY
- FENCED & SECURE TRUCK COURT
- **AVAILABLE - May 2026**

**LEASE RATE: \$7.20 PSF
\$1.48 NNN**

Contact:

Brian Pate

(904) 356-2228 (o)

(904) 631-0461 (m)

Email: bpate@escresults.com

Easton, Sanderson & Company

**Industrial - Commercial R.E. Sales, Leasing & Management
300 E. State Street (Suite G) Jacksonville, FL. 32202**

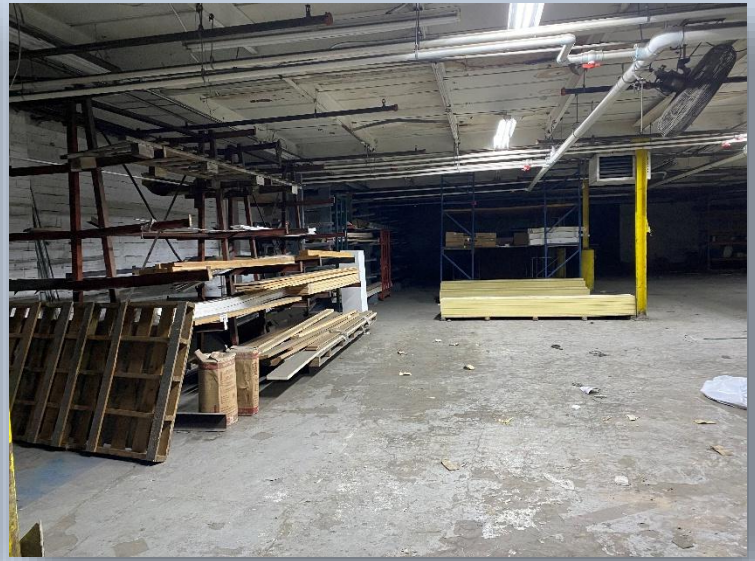
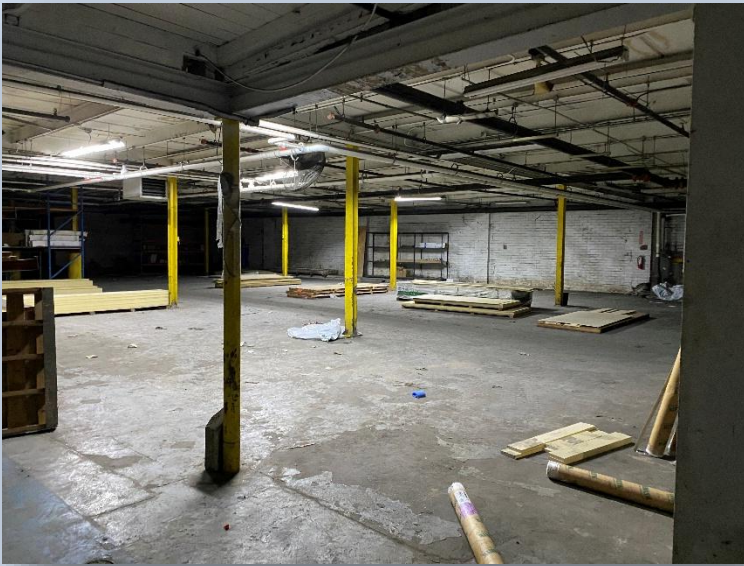
www.escresults.com Licensed Real Estate Brokers



FOR LEASE

Interior Space Photos

2910 W. BEAVER STREET
Jacksonville, Florida 32254
Manufacture Light - Westside Submarket



Contact:

Brian Pate

(904) 356-2228 (o)

(904) 631-0461 (m)

Email: bpate@escresults.com

Easton, Sanderson & Company

Industrial - Commercial R.E. Sales, Leasing & Management

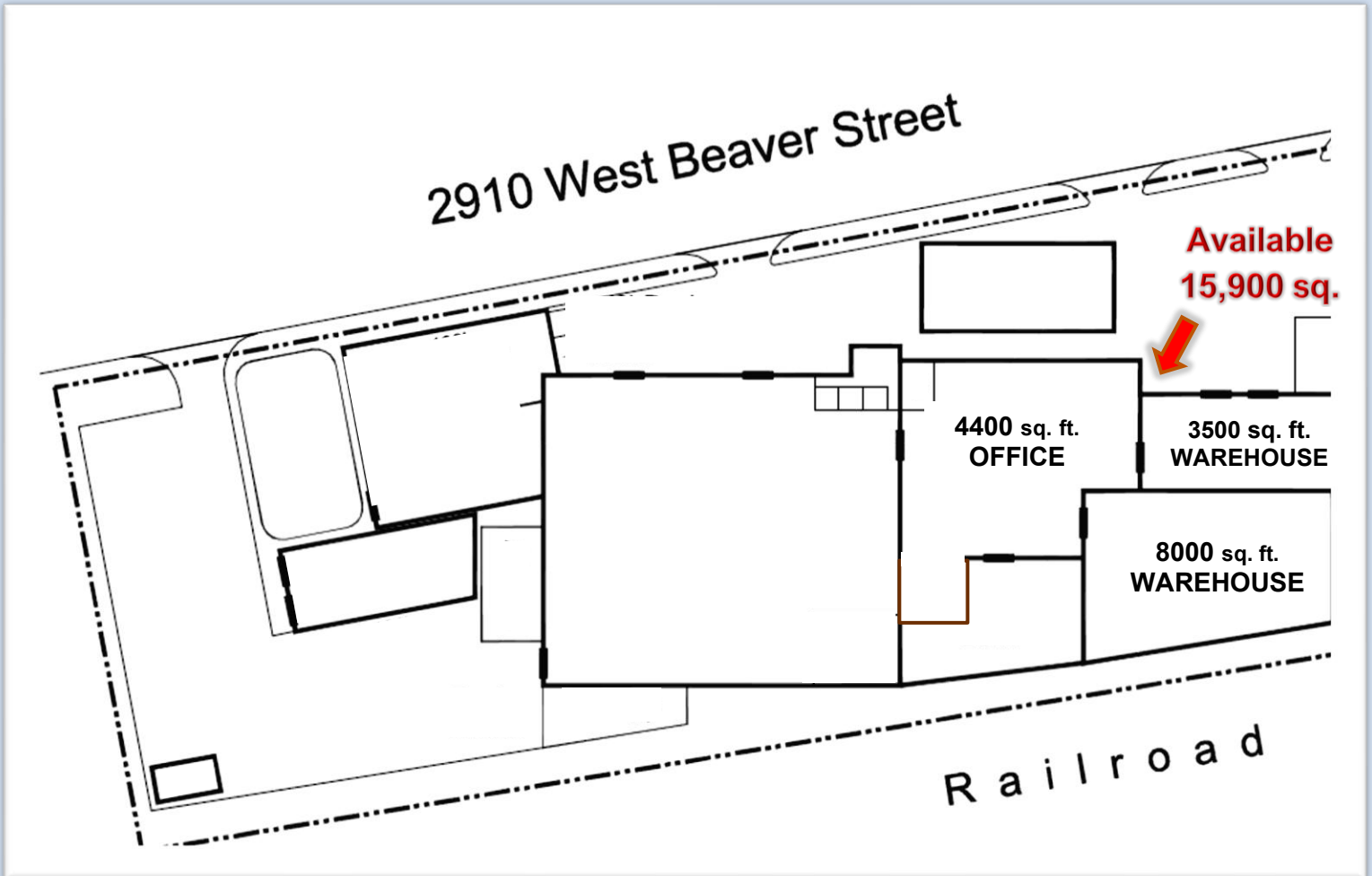
300 E. State Street (Suite G) Jacksonville, FL. 32202

www.escresults.com Licensed Real Estate Brokers



Site Plan

2910 W. BEAVER STREET
Jacksonville, Florida 32254
Manufacture Light - Westside Submarket



Contact:

Brian Pate

(904) 356-2228 (o)

(904) 631-0461 (m)

Email: bpate@escresults.com

Easton, Sanderson & Company

Industrial - Commercial R.E. Sales, Leasing & Management

300 E. State Street (Suite G) Jacksonville, FL. 32202

www.escresults.com Licensed Real Estate Brokers



Location Map

2910 W. Beaver Street
Jacksonville, FL 32254



Easton, Sanderson & Company

Industrial - Commercial R.E. Sales, Leasing & Management
300 E. State Street (Suite G) Jacksonville, FL. 32202

www.esresults.com Licensed Real Estate Brokers

