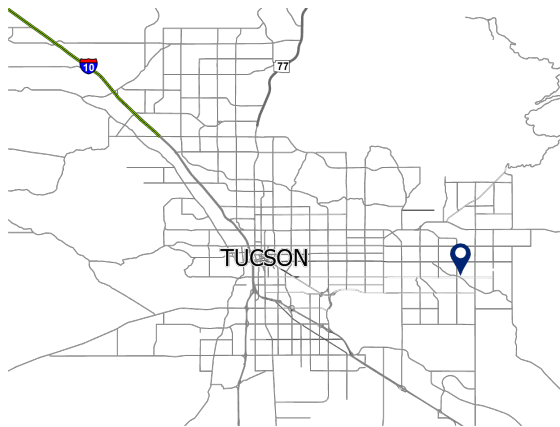


OLD SPANISH TRAIL CROSSING | TUCSON, ARIZONA



ADDRESS:

9525 E Old Spanish Trail, Tucson, AZ 85748

SUMMARY:

Old Spanish Trail Crossing is located on a major commercial intersection in one of Tucson's fastest growing trade areas. This center boasts a strong population of over 160,000 with an average household income of \$75,000+ surrounding site. Located at a high traffic intersection that is the crossroads of three major streets with combined traffic counts of over 40,000 vehicles daily. Monument signage available.



BARCLAY
GROUP

2415 E Camelback Rd, Suite 900
Phoenix, Arizona, 85016
www.BarclayGroup.com

Brett Sheets

Senior Vice President Leasing
602.224.4147 Direct
602.908.8837 Cell
bsheets@barclaygroup.com

Kristin Walrod

Senior Leasing Manager
602.224.4171 Direct
480.521.4822 Cell
kwalrod@barclaygroup.com

Matthew Archer

Leasing Associate
602.224.4160 Direct
602.908.8680 Cell
marcher@barclaygroup.com

OLD SPANISH TRAIL CROSSING | SITE PLAN



ACRES: ±29.00 **SQUARE FEET:** ±210,583 **ZONING:** Commercial



BARCLAY
GROUP

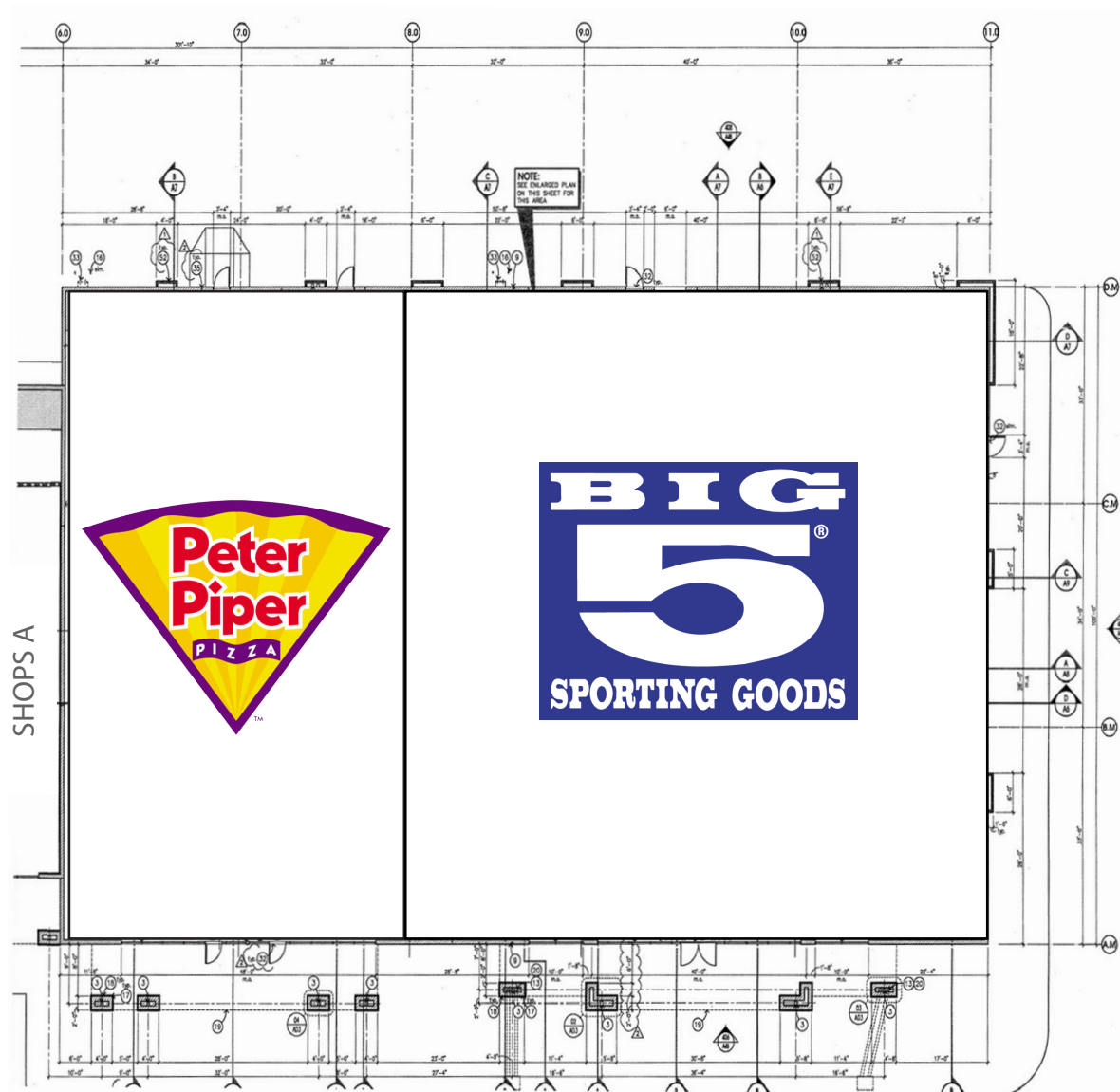
2415 E Camelback Rd, Suite 900
Phoenix, Arizona, 85016
www.BarclayGroup.com

Brett Sheets
Senior Vice President Leasing
602.224.4147 Direct
602.908.8837 Cell
bsheets@barclaygroup.com

Kristin Walrod
Senior Leasing Manager
602.224.4171 Direct
480.521.4822 Cell
kwalrod@barclaygroup.com

Matthew Archer
Leasing Associate
602.224.4160 Direct
602.908.8680 Cell
marcher@barclaygroup.com

OLD SPANISH TRAIL CROSSING | MINOR BUILDING



BARCLAY
GROUP

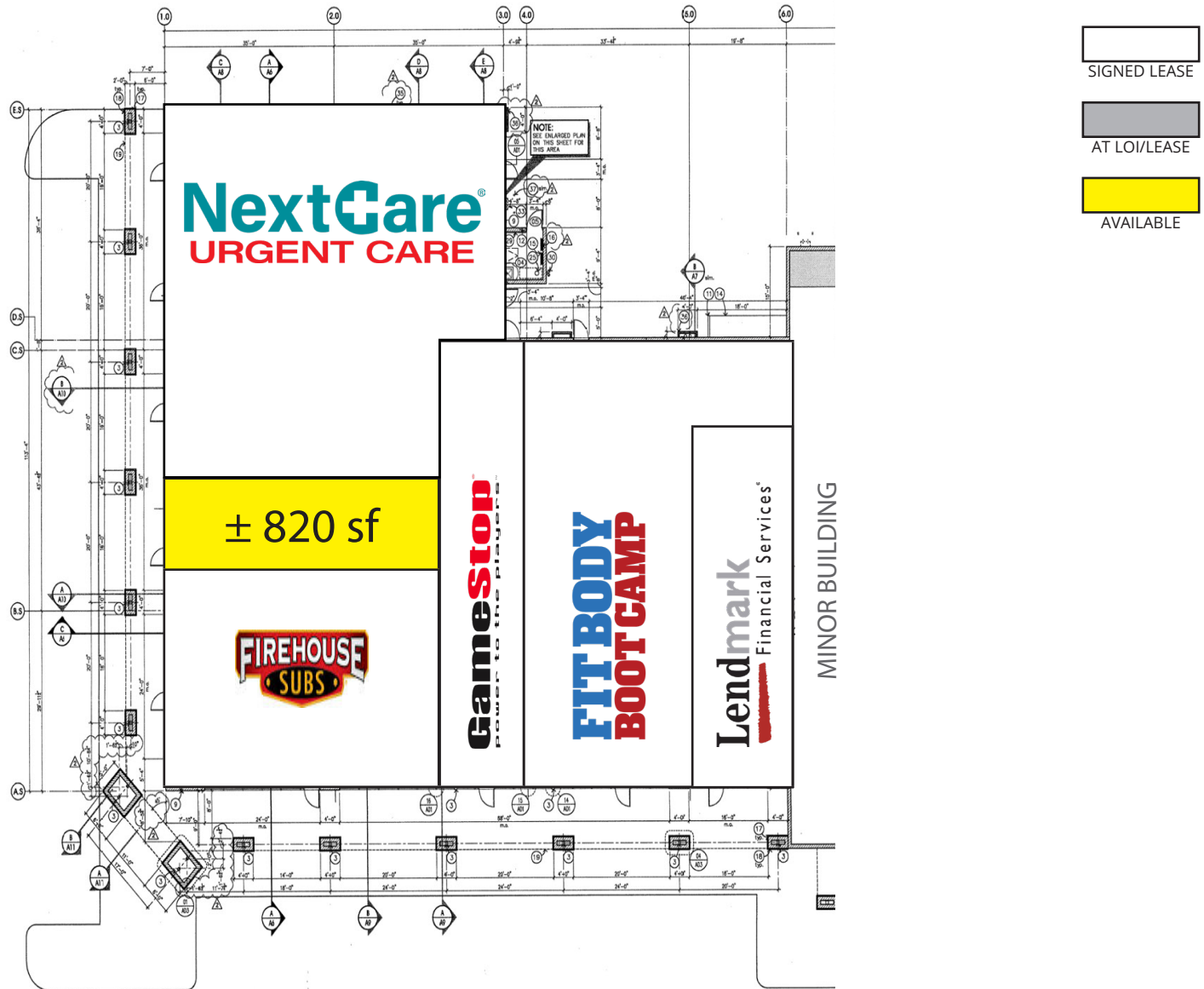
2415 E Camelback Rd, Suite 900
Phoenix, Arizona, 85016
www.BarclayGroup.com

Brett Sheets
Senior Vice President Leasing
602.224.4147 Direct
602.908.8837 Cell
bsheets@barclaygroup.com

Kristin Walrod
Senior Leasing Manager
602.224.4171 Direct
480.521.4822 Cell
kwalrod@barclaygroup.com

Matthew Archer
Leasing Associate
602.224.4160 Direct
602.908.8680 Cell
marcher@barclaygroup.com

OLD SPANISH TRAIL CROSSING | SHOPS A



BARCLAY
GROUP

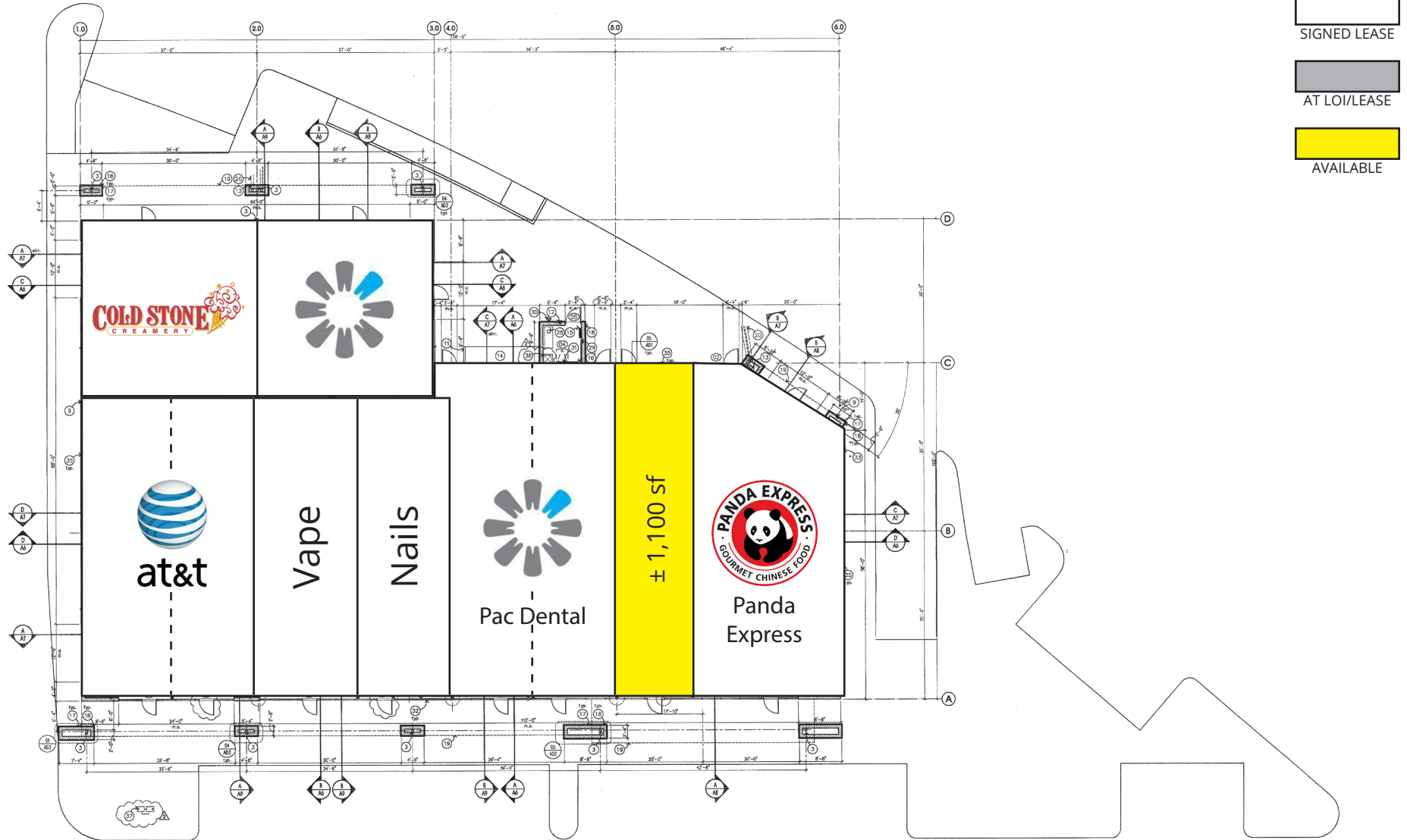
2415 E Camelback Rd, Suite 900
Phoenix, Arizona, 85016
www.BarclayGroup.com

Brett Sheets
Senior Vice President Leasing
602.224.4147 Direct
602.908.8837 Cell
bsheets@barclaygroup.com

Kristin Walrod
Senior Leasing Manager
602.224.4171 Direct
480.521.4822 Cell
kwalrod@barclaygroup.com

Matthew Archer
Leasing Associate
602.224.4160 Direct
602.908.8680 Cell
marcher@barclaygroup.com

OLD SPANISH TRAIL CROSSING | PAD 2



BARCLAY
GROUP

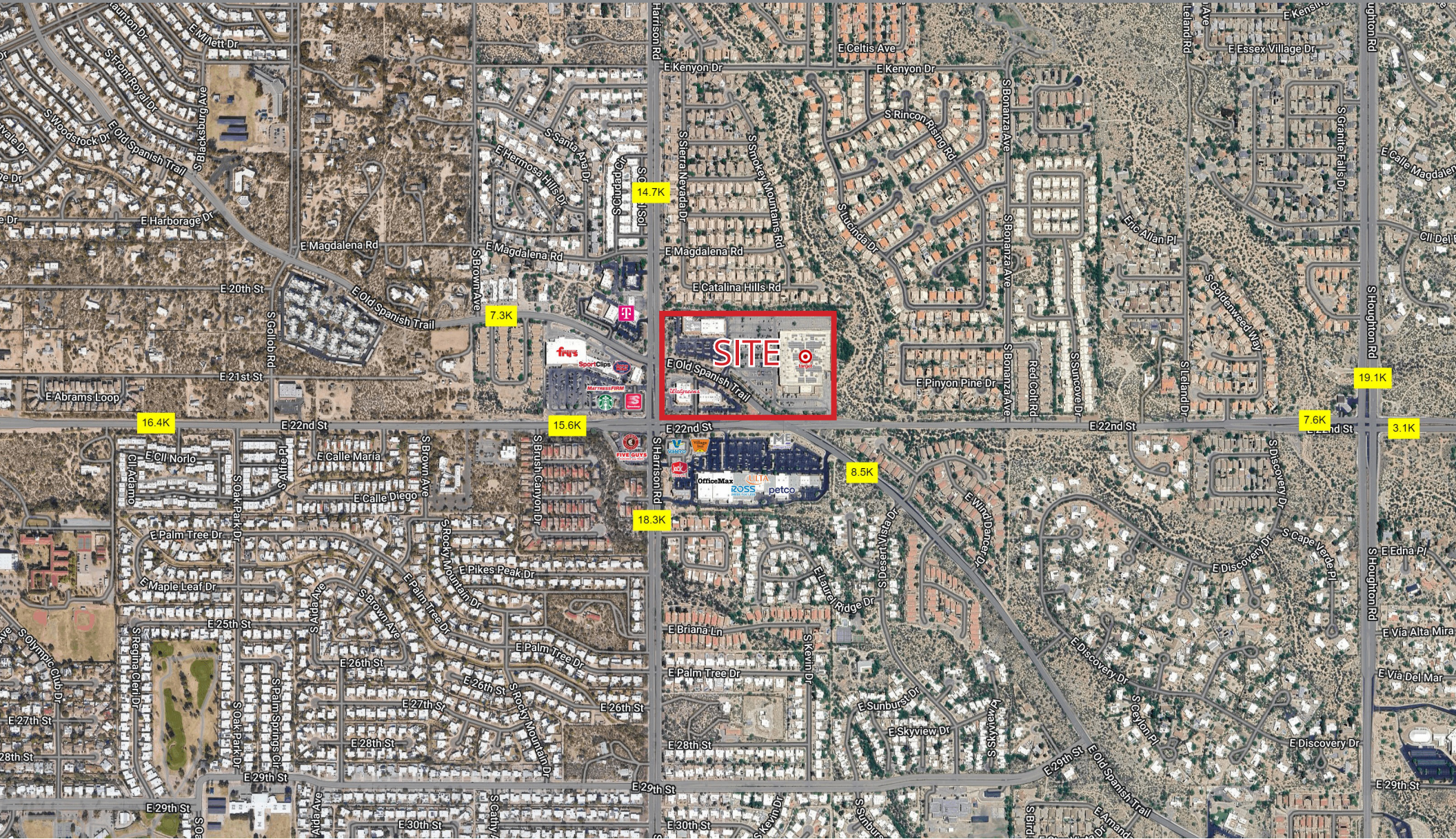
2415 E Camelback Rd, Suite 900
Phoenix, Arizona, 85016
www.BarclayGroup.com

Brett Sheets
Senior Vice President Leasing
602.224.4147 Direct
602.908.8837 Cell
bsheets@barclaygroup.com

Kristin Walrod
Senior Leasing Manager
602.224.4171 Direct
480.521.4822 Cell
kwalrod@barclaygroup.com

Matthew Archer
Leasing Associate
602.224.4160 Direct
602.908.8680 Cell
marcher@barclaygroup.com

OLD SPANISH TRAIL CROSSING | AERIAL



BARCLAY
GROUP

2415 E Camelback Rd, Suite 900
Phoenix, Arizona, 85016
www.BarclayGroup.com

Brett Sheets
Senior Vice President Leasing
602.224.4147 Direct
602.908.8837 Cell
bsheets@barclaygroup.com

Kristin Walrod
Senior Leasing Manager
602.224.4171 Direct
480.521.4822 Cell
kwalrod@barclaygroup.com

Matthew Archer
Leasing Associate
602.224.4160 Direct
602.908.8680 Cell
marcher@barclaygroup.com

OLD SPANISH TRAIL CROSSING | 5-MILE DEMOGRAPHICS

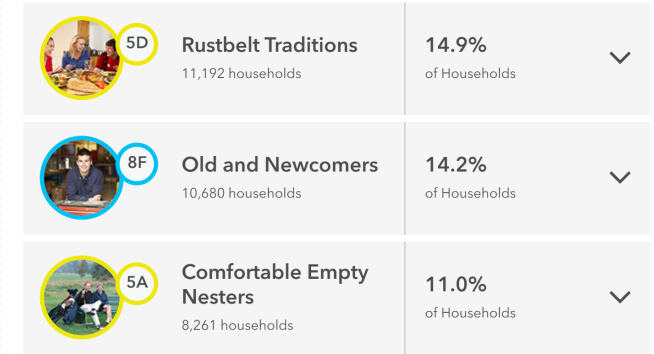
ANNUAL HOUSEHOLD SPENDING



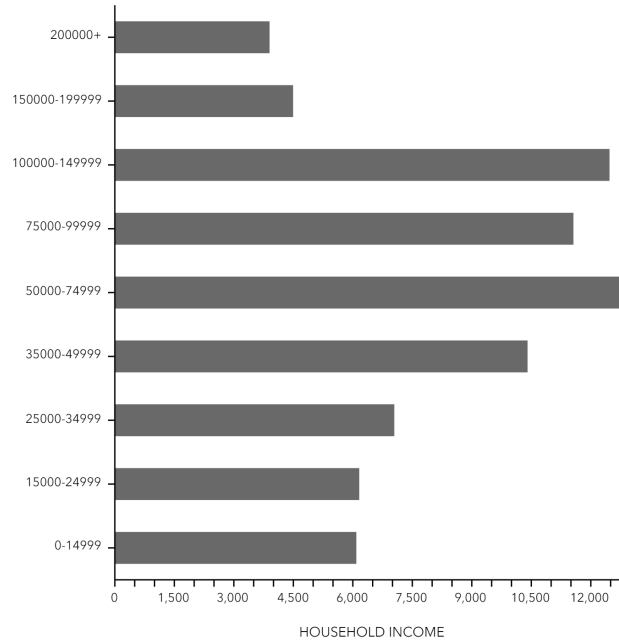
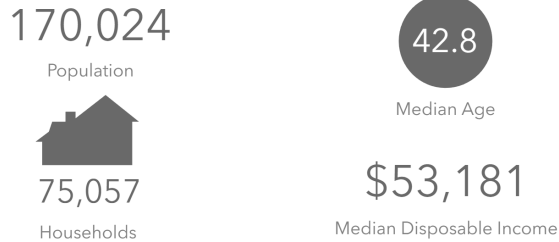
INCOME



Tapestry Segments



KEY FACTS

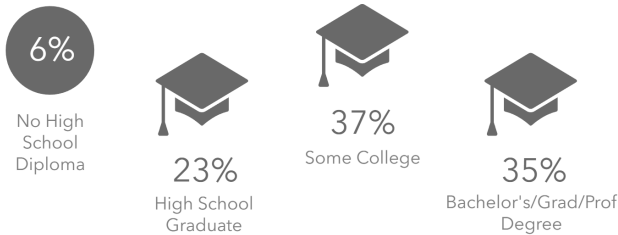


Average Household Size

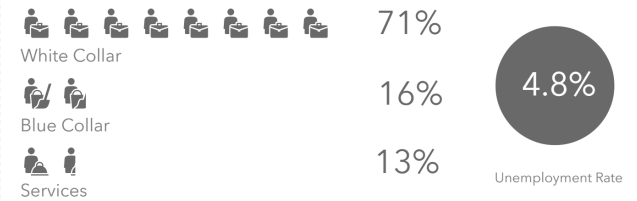
for this area
2.24 which is less than the average for United States

Area	Value	0.00	4.00
Arizona	2.57		
United States	2.53		
Pima County	2.36		
This area	2.24		

EDUCATION



EMPLOYMENT



Source: Esri Business Analyst



BARCLAY
GROUP

2415 E Camelback Rd, Suite 900
Phoenix, Arizona, 85016
www.BarclayGroup.com

Brett Sheets
Senior Vice President Leasing
602.224.4147 Direct
602.908.8837 Cell
bsheets@barclaygroup.com

Kristin Walrod
Senior Leasing Manager
602.224.4171 Direct
480.521.4822 Cell
kwalrod@barclaygroup.com

Matthew Archer
Leasing Associate
602.224.4160 Direct
602.908.8680 Cell
marcher@barclaygroup.com