

# OFFICES AT MIDTOWN

100-800 INTERSTATE PARK DR., MONTGOMERY, AL 36109

## Executive Summary



### OFFERING SUMMARY

Available SF:	1,384 - 20,000 SF
Lease Rate:	\$15.00 SF/yr (Full Service)
Lot Size:	15.88 Acres
Year Built:	1984
Building Size:	± 189,633
Renovated:	2017
Zoning:	B-2 Business District

### PROPERTY HIGHLIGHTS

- 12 months FREE RENT!
- Renovated Office Park (8 Buildings), Lighted entrance
- Buildings 100-600 share a similar Architectural Design & are considered Class A Office Space
- Buildings 700-800 are considered Class A Office Spaces
- Minutes from Downtown Montgomery in an Established Business Corridor
- Convenient to I-85 and I-65
- Outdoor seating areas, garden pavilions, storage, covered patios, conference facility.
- Exterior entry for each tenant
- Beautifully manicured setting with abundant green space

### DEMOGRAPHICS

	1 MILE	3 MILES	5 MILES
Total Households	2,879	35,866	73,681
Total Population	6,515	73,348	153,785
Average HH Income	\$64,873	\$57,670	\$55,240

GENE CODY, CCIM, SIOR

334.386.2441  
gcody@mcrmpm.com

PERRY PATIÑO

334.531.0125  
ppatino@mcrmpm.com

MOORE COMPANY REALTY

312 Catoma Street, Suite 200, Montgomery, AL 36104  
334.262.1958 | moorecompanyrealty.com



# OFFICES AT MIDTOWN

100-800 INTERSTATE PARK DR., MONTGOMERY, AL 36109

## Additional Photos



**GENE CODY, CCIM, SIOR**

334.386.2441  
gcody@mcrmpm.com

**PERRY PATIÑO**

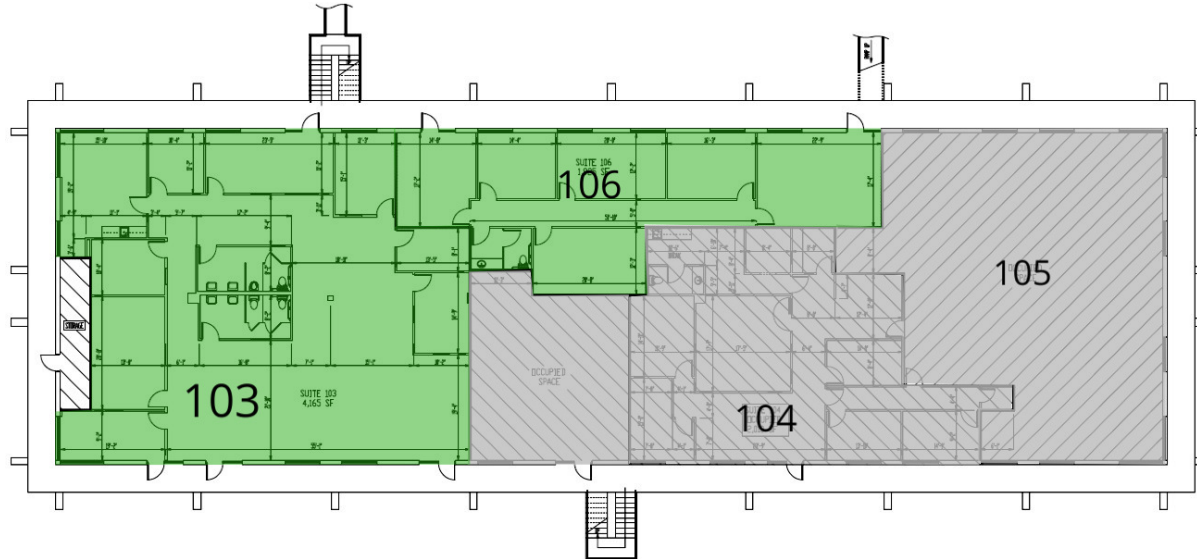
334.531.0125  
ppatino@mcrmpm.com

**MOORE COMPANY REALTY**

312 Catoma Street, Suite 200, Montgomery, AL 36104  
334.262.1958 | moorecompanyrealty.com



100-800 INTERSTATE PARK DR., MONTGOMERY, AL 36109



**BUILDING 100  
FIRST FLOOR PLAN**

SCALE: 1/8" = 1'-0"

Offices AT  
MidTown

## LEGEND

Available

Leased

## AVAILABLE SPACES

SUITE	TENANT	SIZE	TYPE	RATE
Building 100 Suite 103	Available	4,165 SF	Full Service	\$15.00 SF/yr
Building 100 Suite 106	Available	1,925 SF	Full Service	\$15.00 SF/yr

**GENE CODY, CCIM, SIOR**

334.386.2441  
gcody@mcrmpm.com

**PERRY PATIÑO**

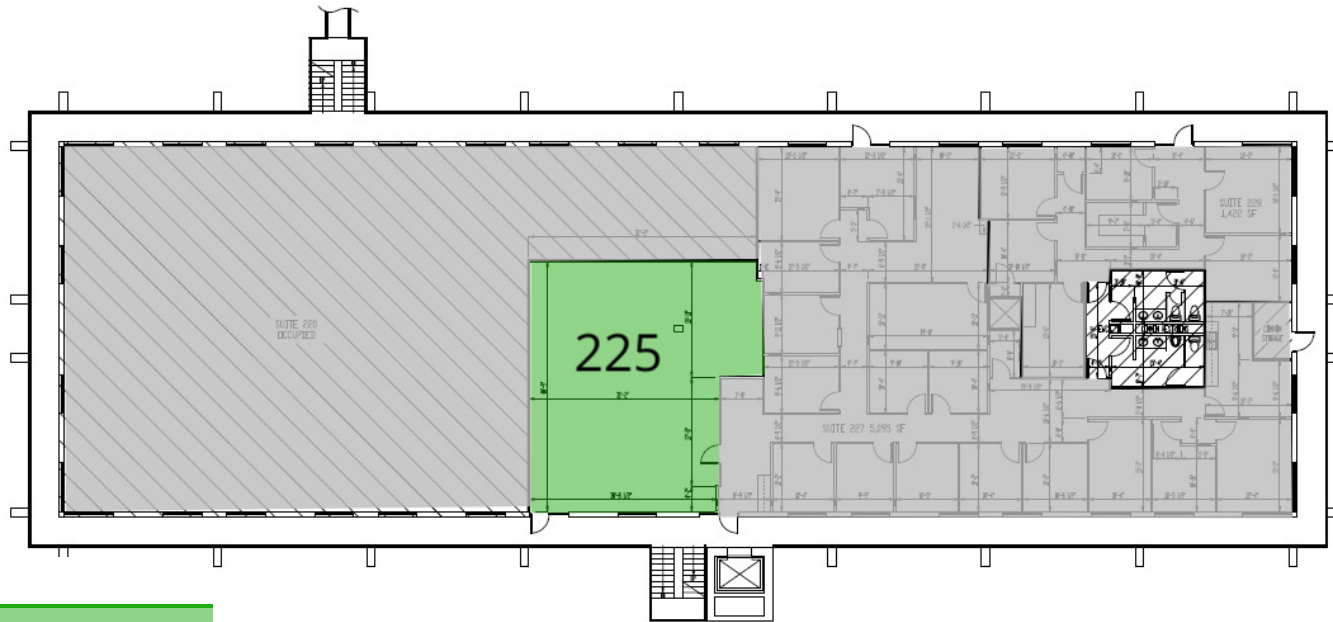
334.531.0125  
ppatino@mcrmpm.com

**MOORE COMPANY REALTY**

312 Catoma Street, Suite 200, Montgomery, AL 36104  
334.262.1958 | moorecompanyrealty.com



100-800 INTERSTATE PARK DR., MONTGOMERY, AL 36109



### LEGEND

Available

Leased

**BUILDING 200  
SECOND FLOOR PLAN**

### AVAILABLE SPACES

SUITE	TENANT	SIZE	TYPE	RATE
Building 200 Suite 225	Available	1,384 SF	Full Service	\$15.00 SF/yr

**GENE CODY, CCIM, SIOR**

334.386.2441  
gcody@mcrmpm.com

**PERRY PATIÑO**

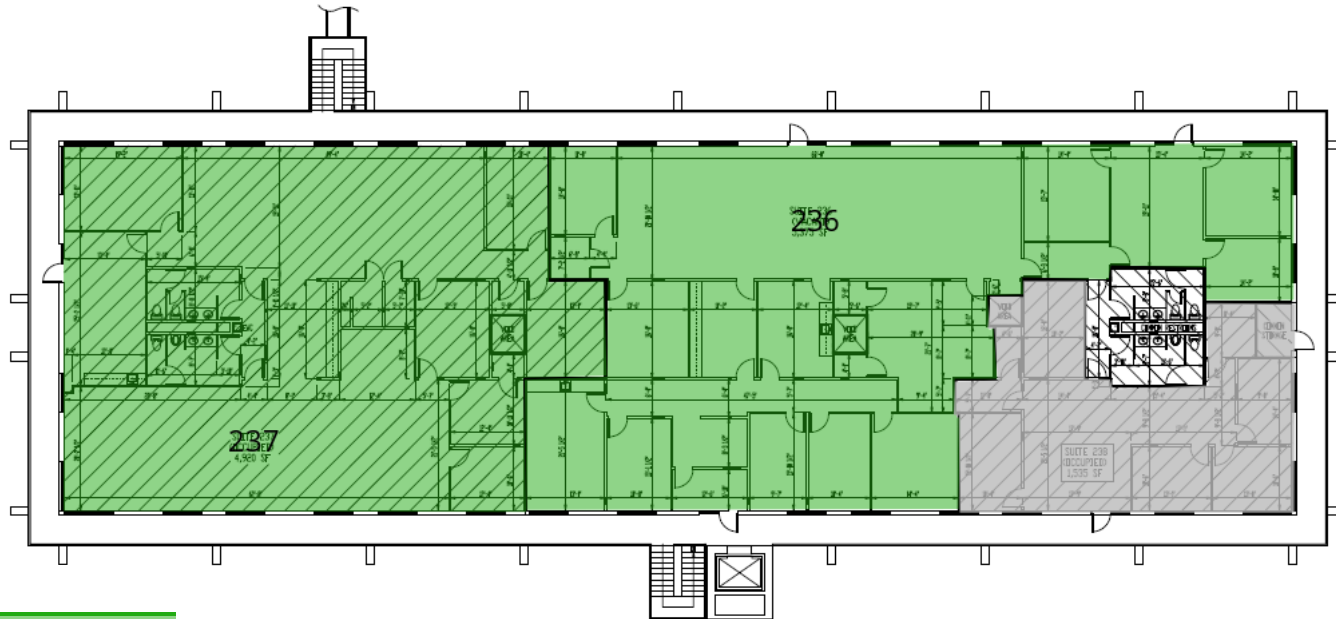
334.531.0125  
ppatino@mcrmpm.com

**MOORE COMPANY REALTY**

312 Catoma Street, Suite 200, Montgomery, AL 36104  
334.262.1958 | moorecompanyrealty.com



100-800 INTERSTATE PARK DR., MONTGOMERY, AL 36109



## LEGEND

Available

Leased

## BUILDING 200 THIRD FLOOR PLAN

SHEET TITLE  
BUILDING 200  
THIRD FLOOR F

## AVAILABLE SPACES

SUITE	TENANT	SIZE	TYPE	RATE
Building 200 Suite 236	Available	5,375 - 10,295 SF	Full Service	\$15.00 SF/yr
Building 200 Suite 237	Available	4,920 - 10,295 SF	Full Service	\$15.00 SF/yr

**GENE CODY, CCIM, SIOR**

334.386.2441  
gcody@mcrmpm.com

**PERRY PATIÑO**

334.531.0125  
ppatino@mcrmpm.com

**MOORE COMPANY REALTY**

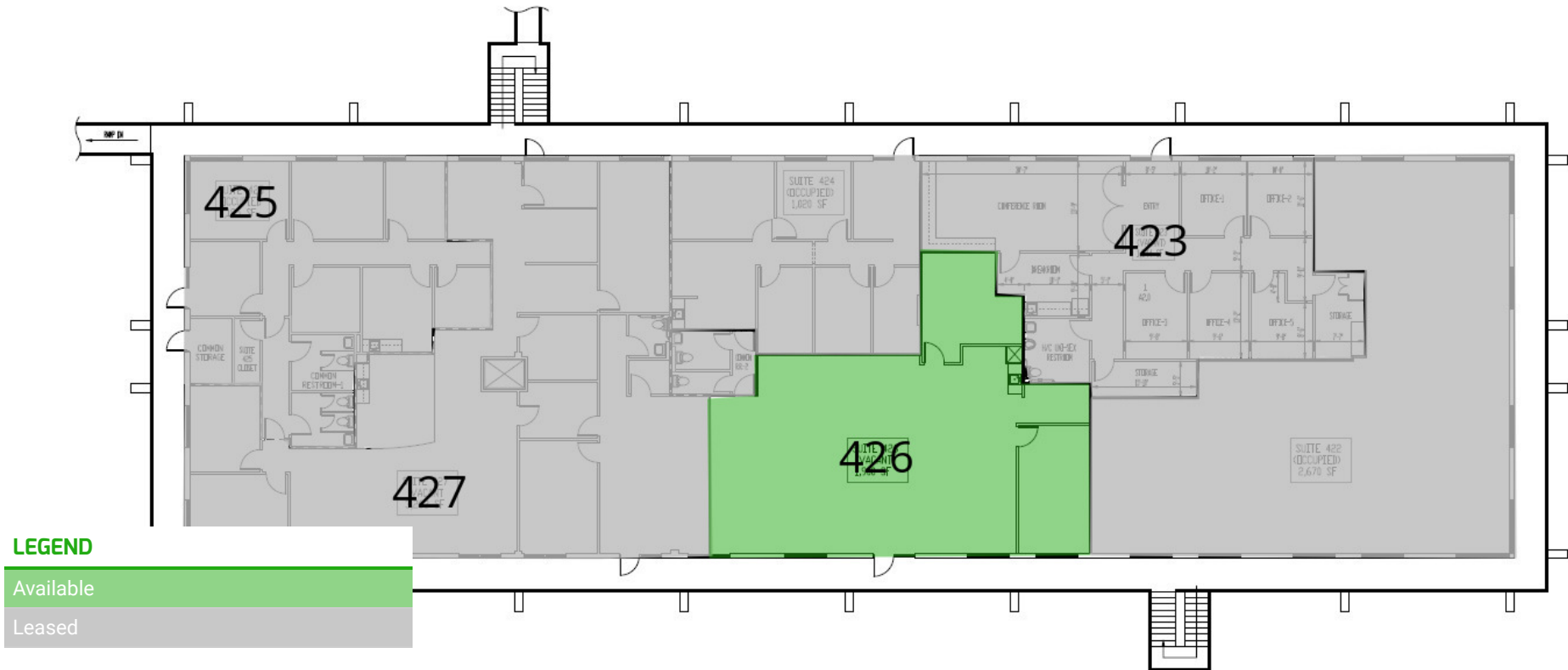
312 Catoma Street, Suite 200, Montgomery, AL 36104  
334.262.1958 | moorecompanyrealty.com



# OFFICES AT MIDTOWN

## Plans

100-800 INTERSTATE PARK DR., MONTGOMERY, AL 36109



### AVAILABLE SPACES

SUITE	TENANT	SIZE	TYPE	RATE
Building 400 Suite 426	Available	1,863 SF	Full Service w/ Tenant Paying Electric	\$15.00 SF/yr

**GENE CODY, CCIM, SIOR**

334.386.2441  
gcody@mcrmpm.com

**PERRY PATIÑO**

334.531.0125  
ppatino@mcrmpm.com

**MOORE COMPANY REALTY**

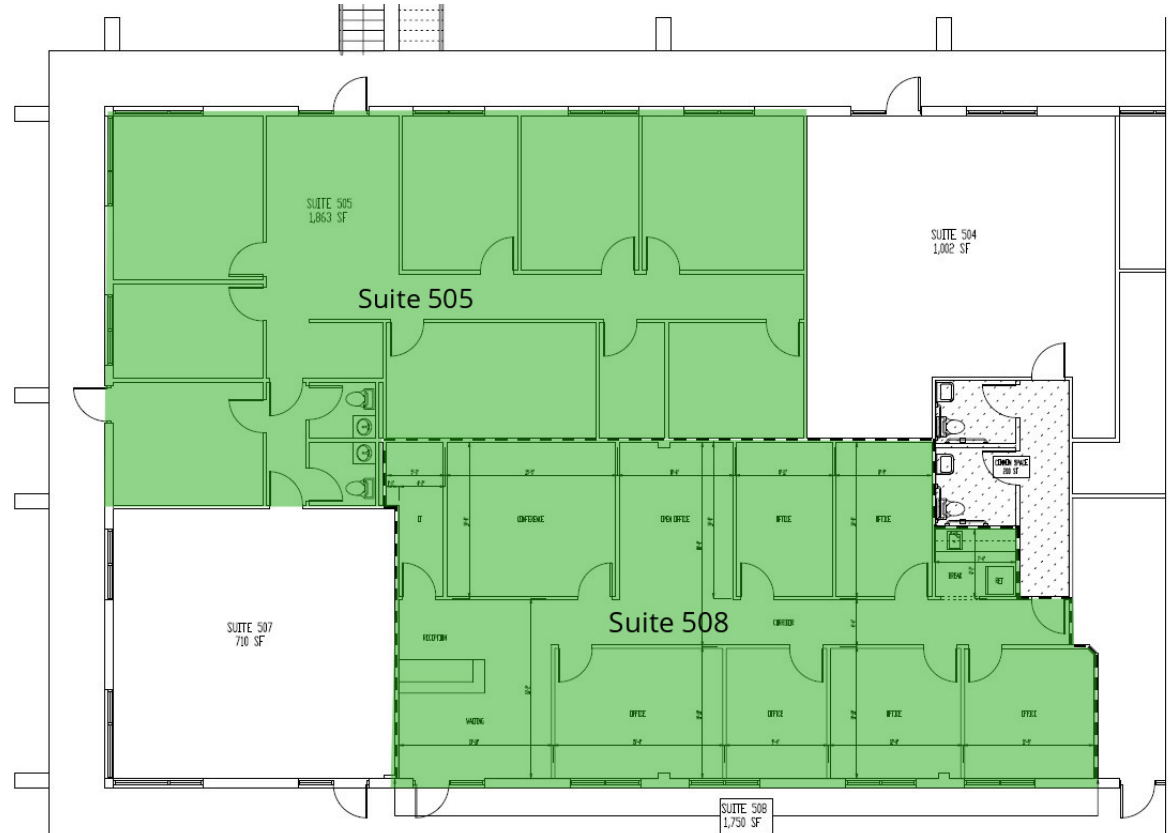
312 Catoma Street, Suite 200, Montgomery, AL 36104  
334.262.1958 | moorecompanyrealty.com



# OFFICES AT MIDTOWN

# Plans

100-800 INTERSTATE PARK DR., MONTGOMERY, AL 36109



## LEGEND

Available

## AVAILABLE SPACES

SUITE	TENANT	SIZE	TYPE	RATE
Building 500 Suite 505	Available	1,863 SF	Full Service	\$15.00 SF/yr
Building 500 Suite 508	Available	1,750 SF	Full Service	\$15.00 SF/yr

**GENE CODY, CCIM, SIOR**

334.386.2441  
gcody@mcrmpm.com

**PERRY PATIÑO**

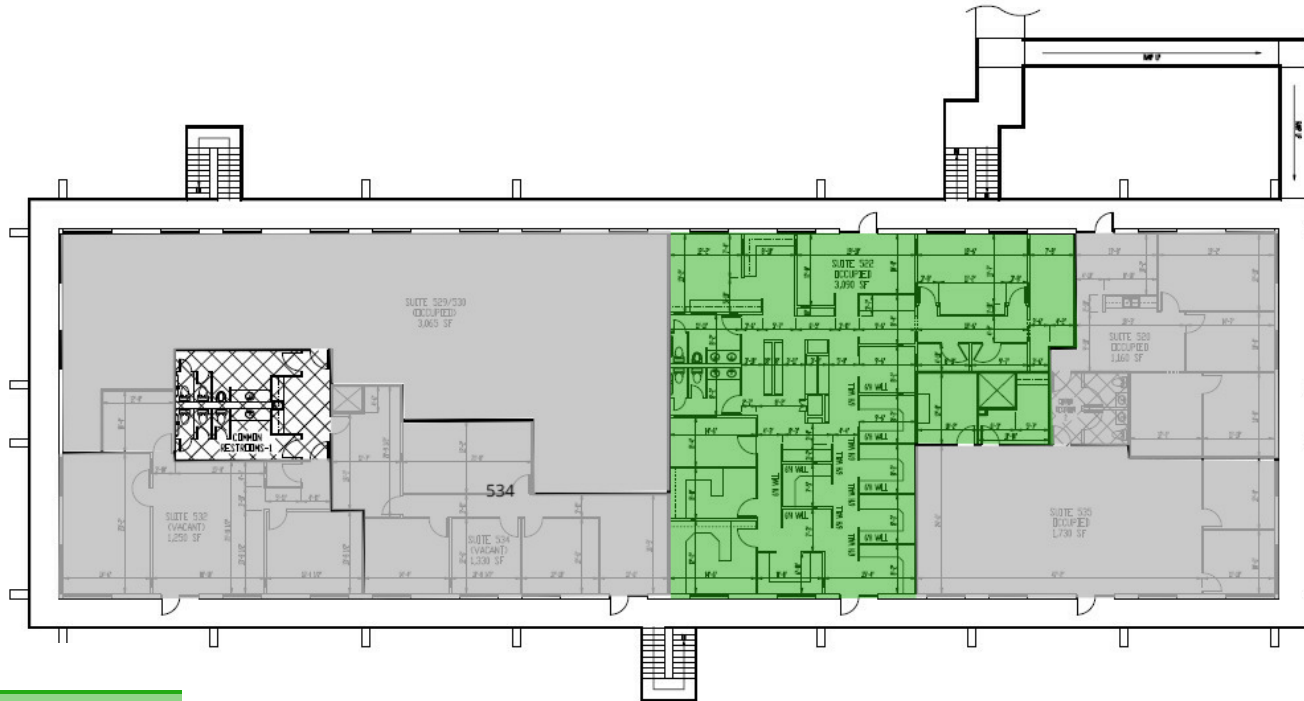
334.531.0125  
ppatino@mcrmpm.com

**MOORE COMPANY REALTY**

312 Catoma Street, Suite 200, Montgomery, AL 36104  
334.262.1958 | moorecompanyrealty.com



100-800 INTERSTATE PARK DR., MONTGOMERY, AL 36109



### LEGEND

Available

Leased

## BUILDING 500 SECOND FLOOR PLAN

### AVAILABLE SPACES

SUITE	TENANT	SIZE	TYPE	RATE
Building 500 Suite 522	Available	3,090 SF	Full Service	\$15.00 SF/yr

**GENE CODY, CCIM, SIOR**

334.386.2441  
gcody@mcrmpm.com

**PERRY PATIÑO**

334.531.0125  
ppatino@mcrmpm.com

**MOORE COMPANY REALTY**

312 Catoma Street, Suite 200, Montgomery, AL 36104  
334.262.1958 | moorecompanyrealty.com



100-800 INTERSTATE PARK DR., MONTGOMERY, AL 36109



## LEGEND

Available

Leased

## AVAILABLE SPACES

SUITE	TENANT	SIZE	TYPE	RATE
Building 600 Suite 608	Available	2,006 SF	Full Service	\$15.00 SF/yr

**GENE CODY, CCIM, SIOR**

334.386.2441  
gcody@mcrmpm.com

**PERRY PATIÑO**

334.531.0125  
ppatino@mcrmpm.com

**MOORE COMPANY REALTY**

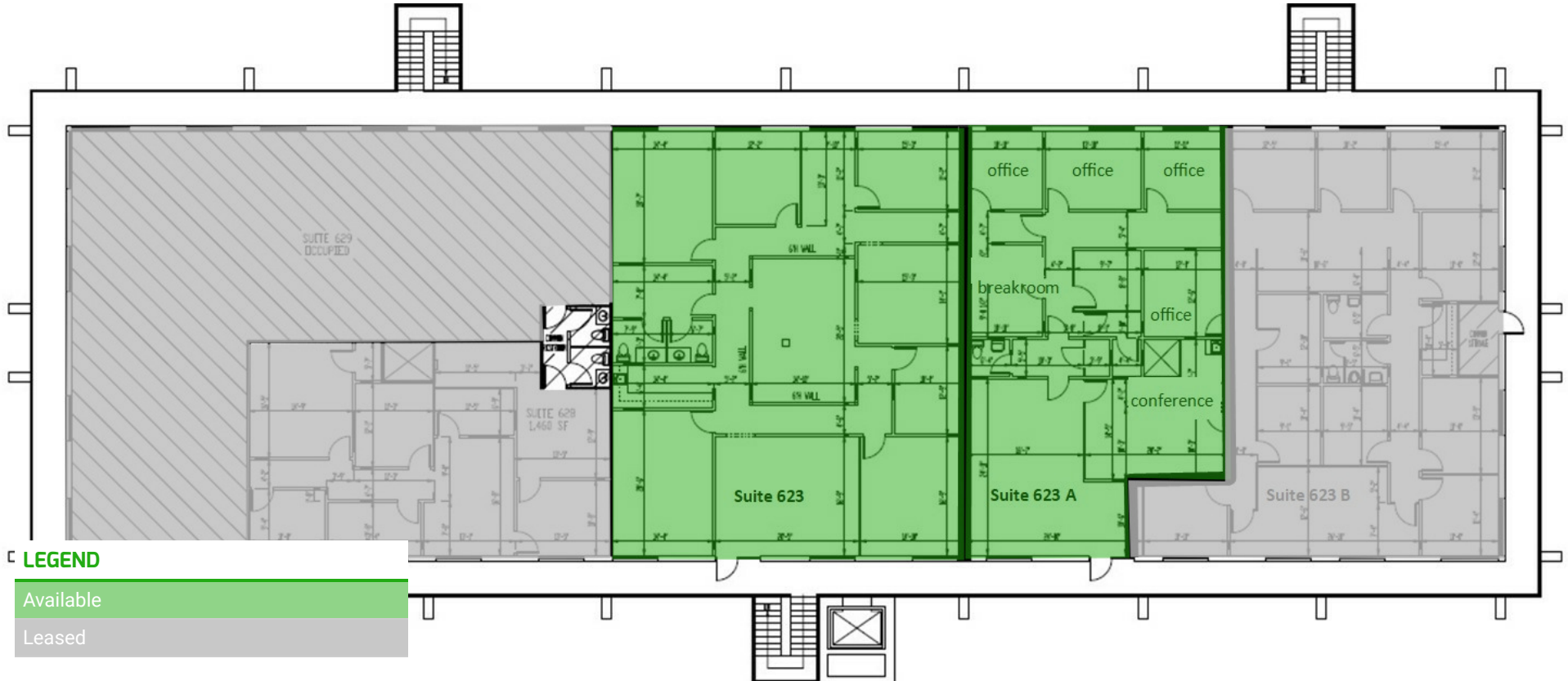
312 Catoma Street, Suite 200, Montgomery, AL 36104  
334.262.1958 | moorecompanyrealty.com



# OFFICES AT MIDTOWN

## Plans

100-800 INTERSTATE PARK DR., MONTGOMERY, AL 36109



### AVAILABLE SPACES

SUITE	TENANT	SIZE	TYPE	RATE
Building 600 Suite 623	Available	2,820 - 4,990 SF	Full Service	\$15.00 SF/yr
Building 600 Suite 623 a	Available	2,170 - 4,990 SF	Full Service	\$15.00 SF/yr

**GENE CODY, CCIM, SIOR**

334.386.2441  
gcody@mcrmpm.com

**PERRY PATIÑO**

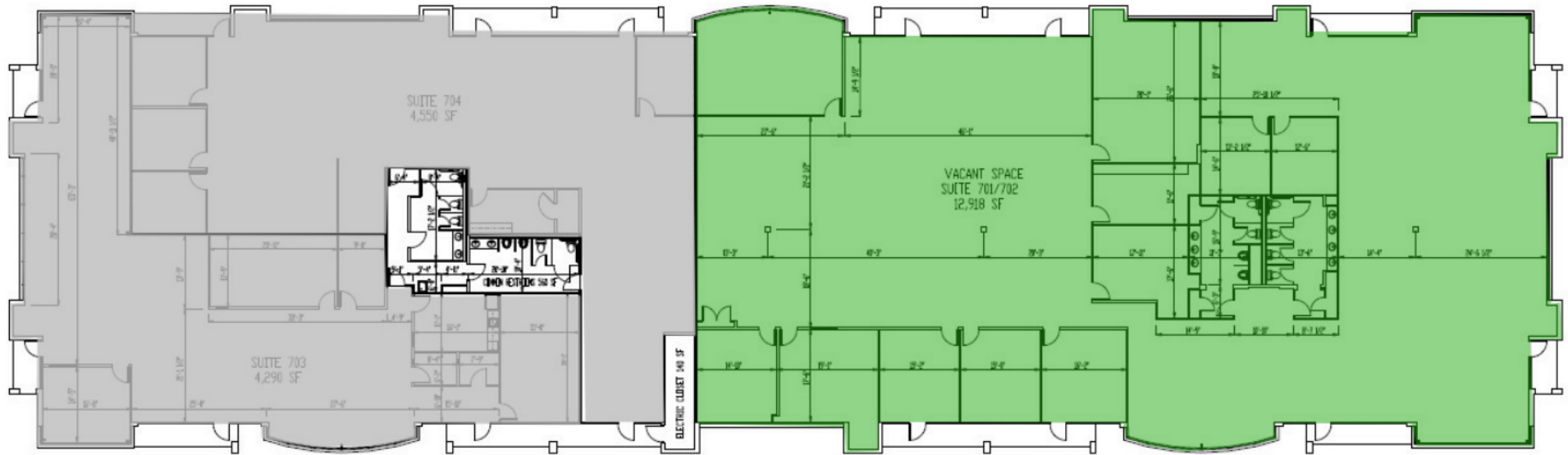
334.531.0125  
ppatino@mcrmpm.com

**MOORE COMPANY REALTY**

312 Catoma Street, Suite 200, Montgomery, AL 36104  
334.262.1958 | moorecompanyrealty.com



100-800 INTERSTATE PARK DR., MONTGOMERY, AL 36109



### LEGEND

Available

Leased

## BUILDING 700

### AVAILABLE SPACES

SUITE	TENANT	SIZE	TYPE	RATE
Building 700 Suite 701	Available	12,918 SF	Full Service	\$15.00 SF/yr

**GENE CODY, CCIM, SIOR**

334.386.2441  
gcody@mcrmpm.com

**PERRY PATIÑO**

334.531.0125  
ppatino@mcrmpm.com

**MOORE COMPANY REALTY**

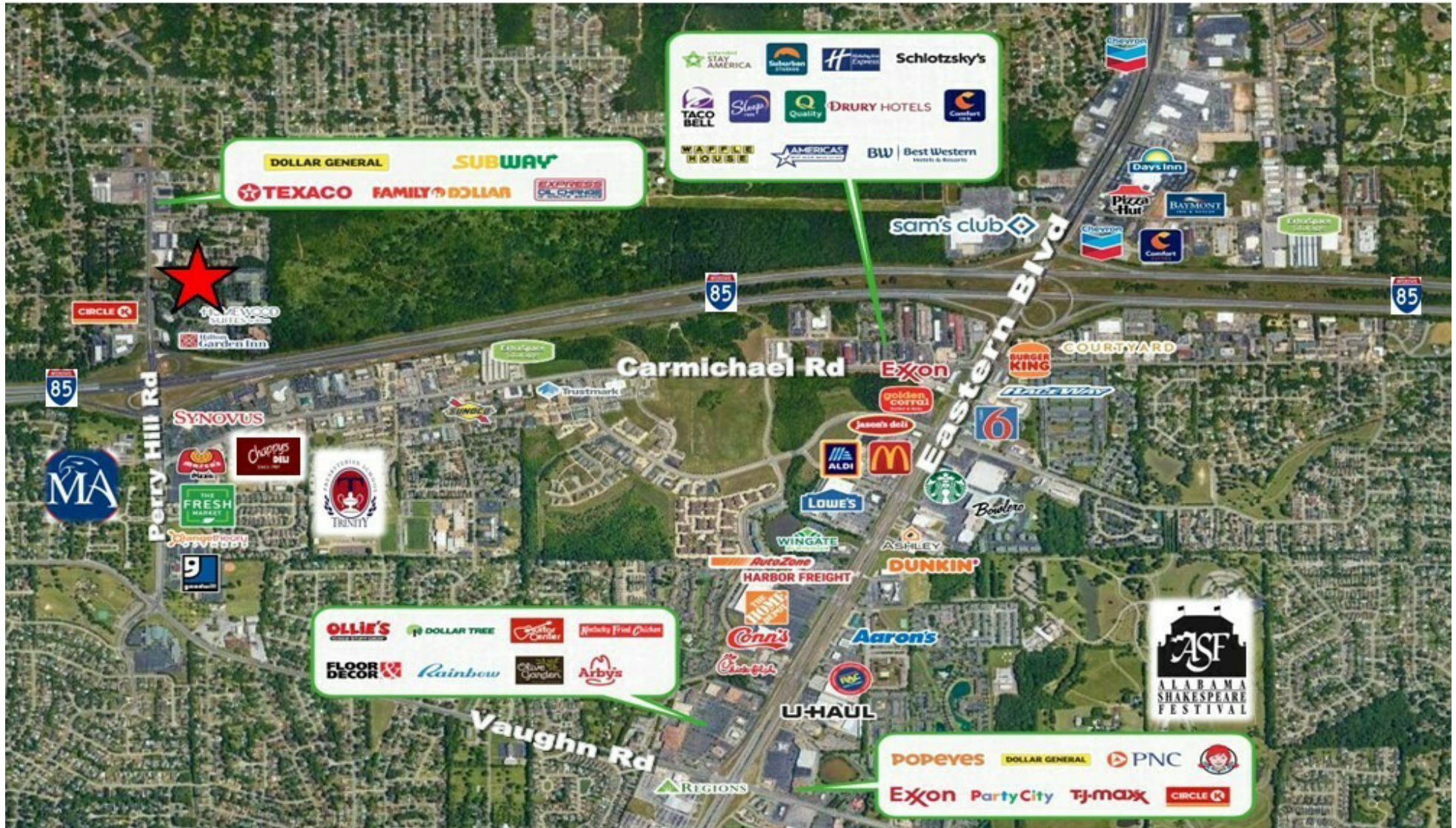
312 Catoma Street, Suite 200, Montgomery, AL 36104  
334.262.1958 | moorecompanyrealty.com



# OFFICES AT MIDTOWN

## Retail Map

100-800 INTERSTATE PARK DR., MONTGOMERY, AL 36109



GENE CODY, CCIM, SIOR

334.386.2441  
gcody@mcrmpm.com

PERRY PATIÑO

334.531.0125  
ppatino@mcrmpm.com

MOORE COMPANY REALTY

312 Catoma Street, Suite 200, Montgomery, AL 36104  
334.262.1958 | moorecompanyrealty.com

