

19500 VICTOR PARKWAY
SUITE 545
LIVONIA, MICHIGAN

OFFICE FOR SUBLEASE
3,706 Square Feet Available



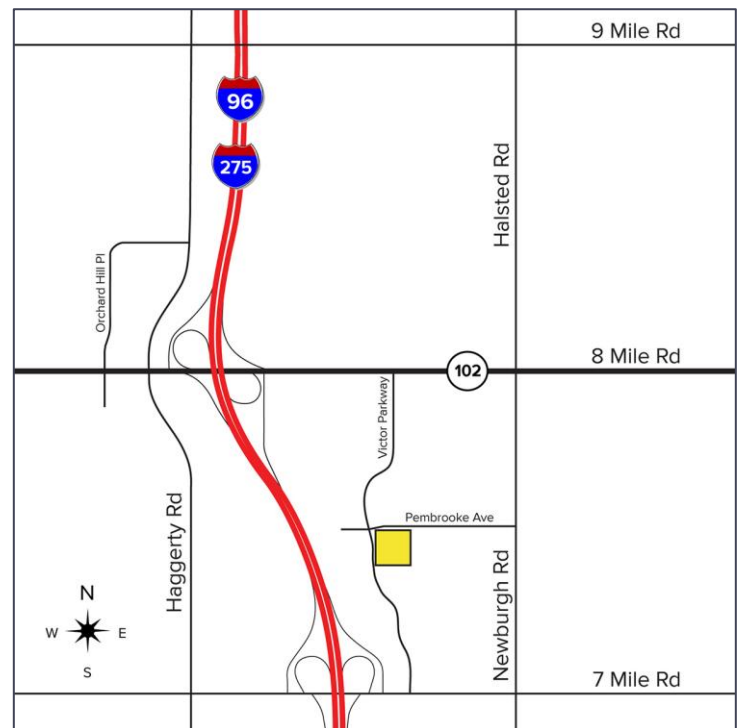
**SIGNATURE
ASSOCIATES**
KNOW SIGNATURE | KNOW RESULTS

VICTOR CORPORATE CENTER V



PROPERTY FEATURES

- 3,706 square feet available
- Newly built out space includes 11 private offices, conference room, break room, lobby/reception area and patio/balcony
- The space can be available in 1-3 months with a potential sublease through June 2027 or a direct deal with Landlord for a longer term
- Ample parking
- Excellent location with immediate access to I-275
- Lease Rate: Contact Broker



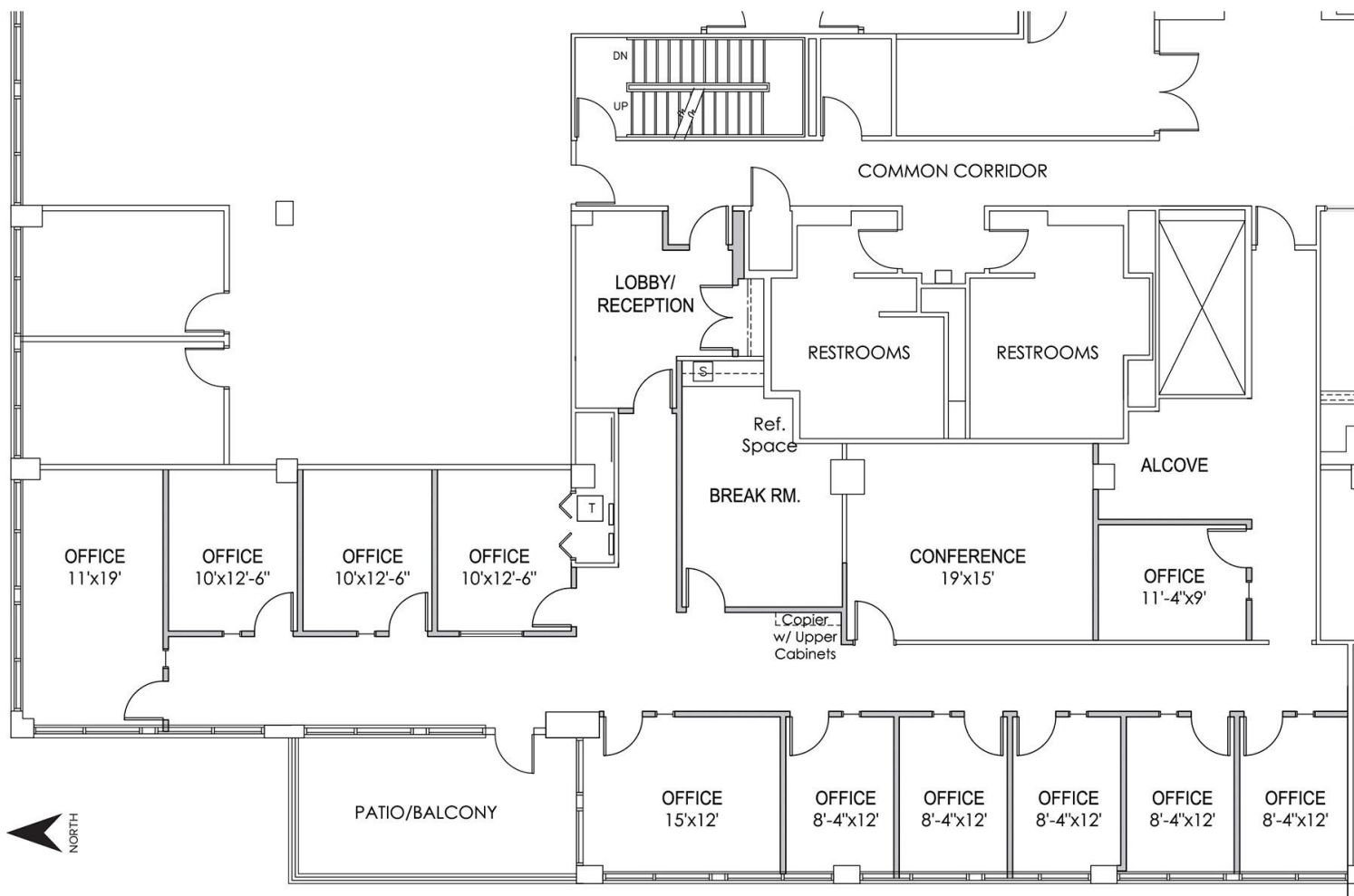
For more information, please contact:

JEFF LEMANSKI
(248) 359 0641
jlemanski@signatureassociates.com

DAVE GREEN
(248) 948 4184
dgreen@signatureassociates.com

SIGNATURE ASSOCIATES
One Towne Square, Suite 1200
Southfield, MI 48076
www.signatureassociates.com

Floor Plan



For more information, please contact:

JEFF LEMANSKI
(248) 359 0641
jlemanski@signatureassociates.com

DAVE GREEN
(248) 948 4184
dgreen@signatureassociates.com

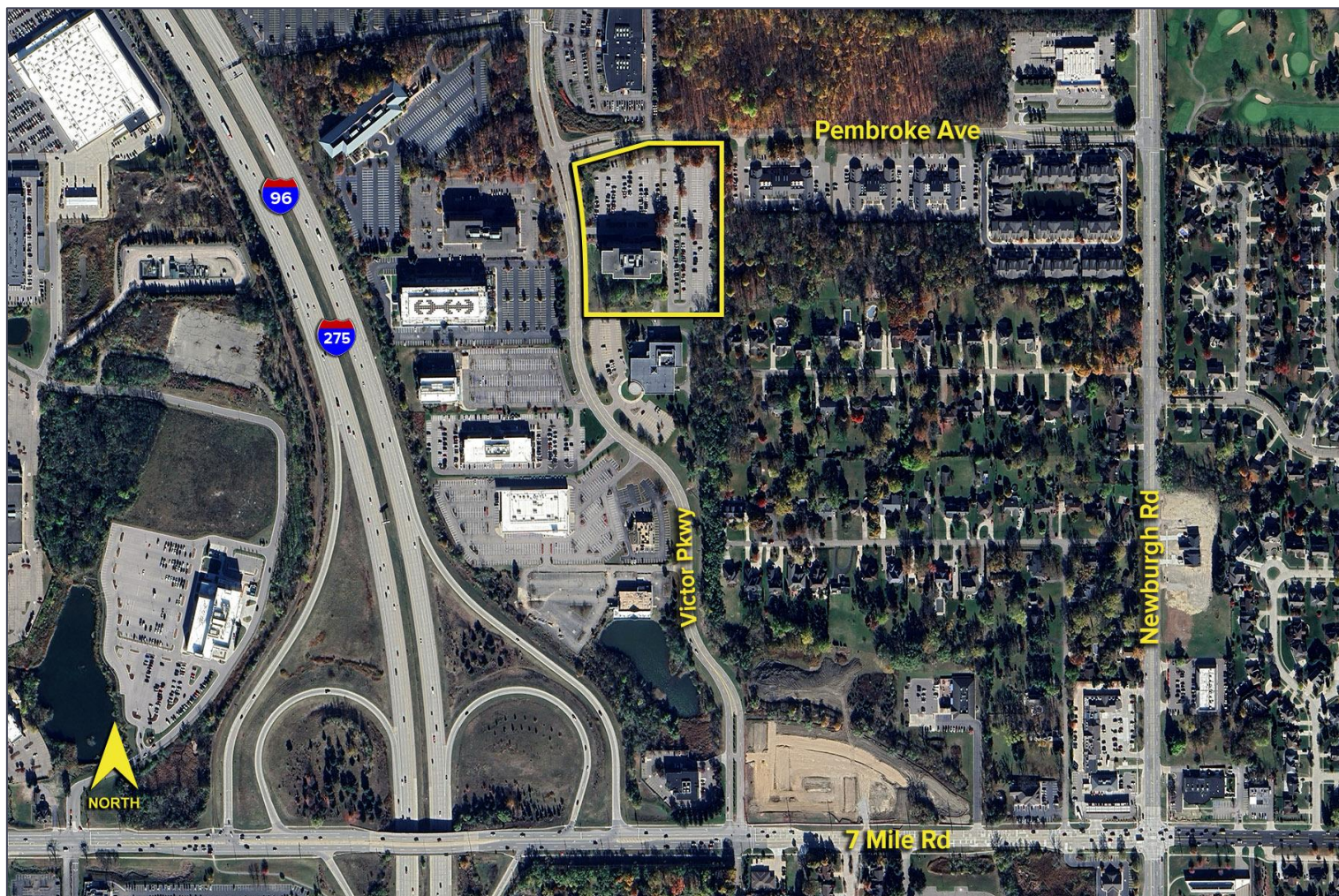
SIGNATURE ASSOCIATES
One Towne Square, Suite 1200
Southfield, MI 48076
www.signatureassociates.com

19500 Victor Parkway - Livonia, Michigan

Office For Sublease

3,706
Square Feet
AVAILABLE

Aerial



For more information, please contact:

JEFF LEMANSKI
(248) 359 0641
jlemanski@signatureassociates.com

DAVE GREEN
(248) 948 4184
dgreen@signatureassociates.com

SIGNATURE ASSOCIATES
One Towne Square, Suite 1200
Southfield, MI 48076
www.signatureassociates.com