

Orleans TOWER

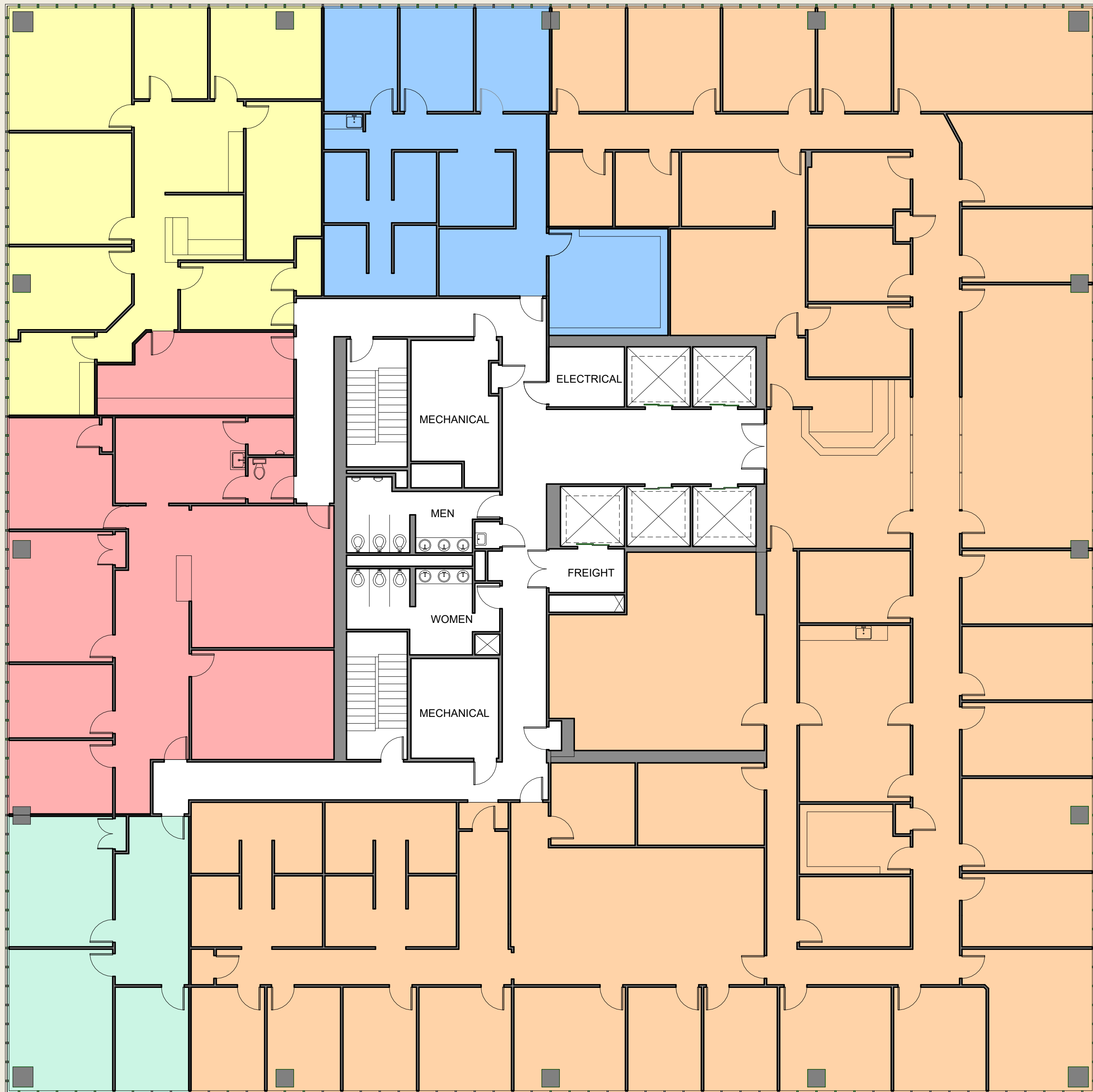
LASALLE ST.

OCCUPIED
SUIE 2050
1,567 RSF

OCCUPIED
SUIE 2030
2,202 RSF

GIROD ST.

OCCUPIED
SUIE 2040
2,635 RSF



OCCUPIED
SUIE 2000
12,572 RSF

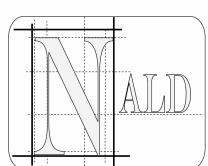
POYDRAS ST.

OCCUPIED
SUIE 2010
1,010 RSF

LOYOLA AVE.

CALL FOR MORE LEASING INFORMATION: 504-681-3437

1340 POYDRAS
NEW ORLEANS, LA 70112



NORTH AMERICAN LAND DEVELOPMENT



JACK M. GORDON
Commercial Leasing and Sales

4141 Veterans Blvd., Suite 300
Metairie, LA 70002

20TH FLOOR: SUITES
2000-2050

* NOT FOR CONSTRUCTION/ FOR CALCULATION PURPOSES ONLY
* THE FLOOR PLAN ILLUSTRATION IS NOT THE FINAL PROGRAM AND
CHANGES MAY BE MADE TO FULFILL THE TENANTS NEEDS.
* SUITE EXPANSION/MERGE ALLOWED IF NEEDED OR POSSIBLE