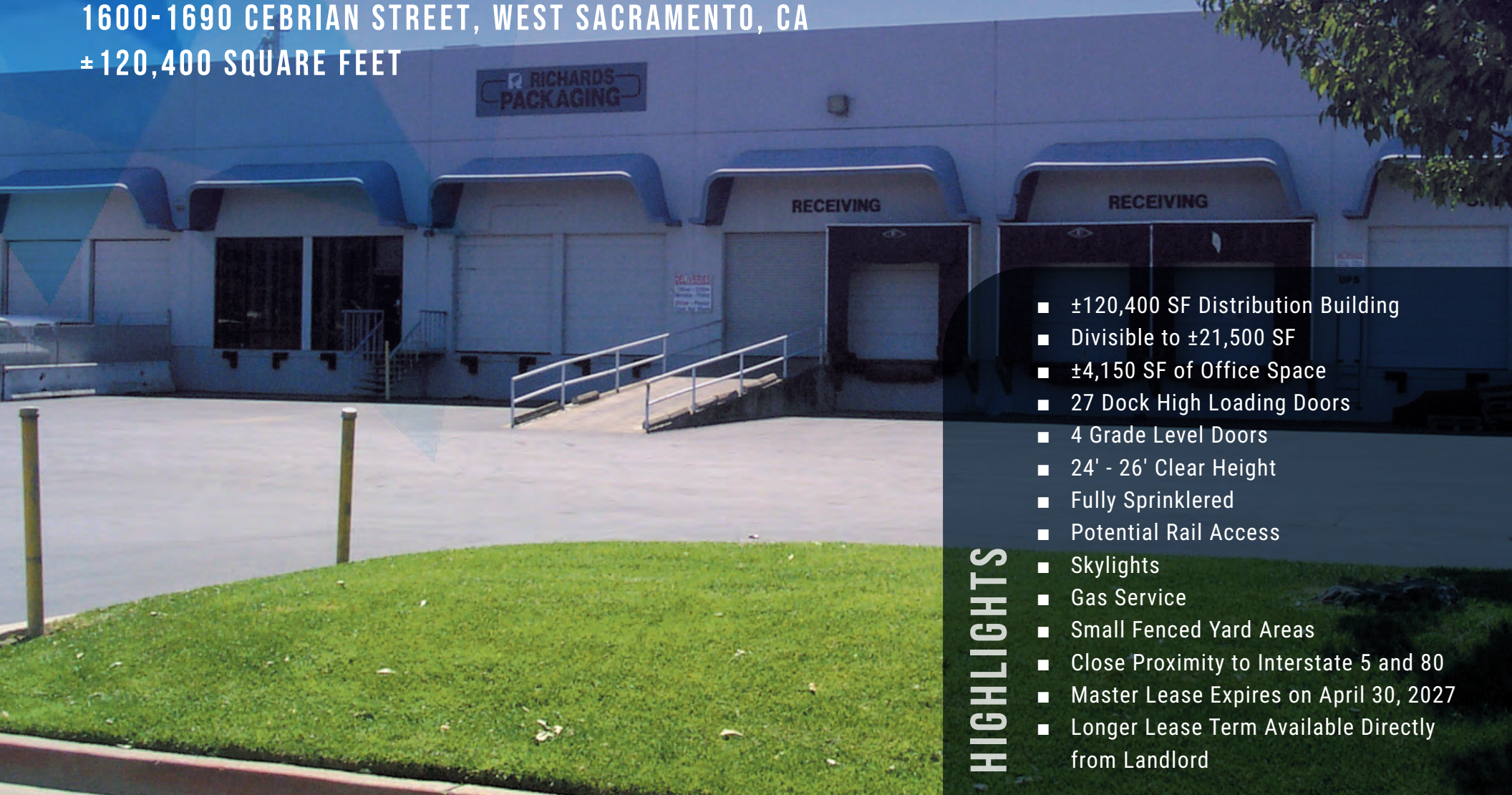


FOR SUBLEASE LARGE WAREHOUSE/DISTRIBUTION BUILDING

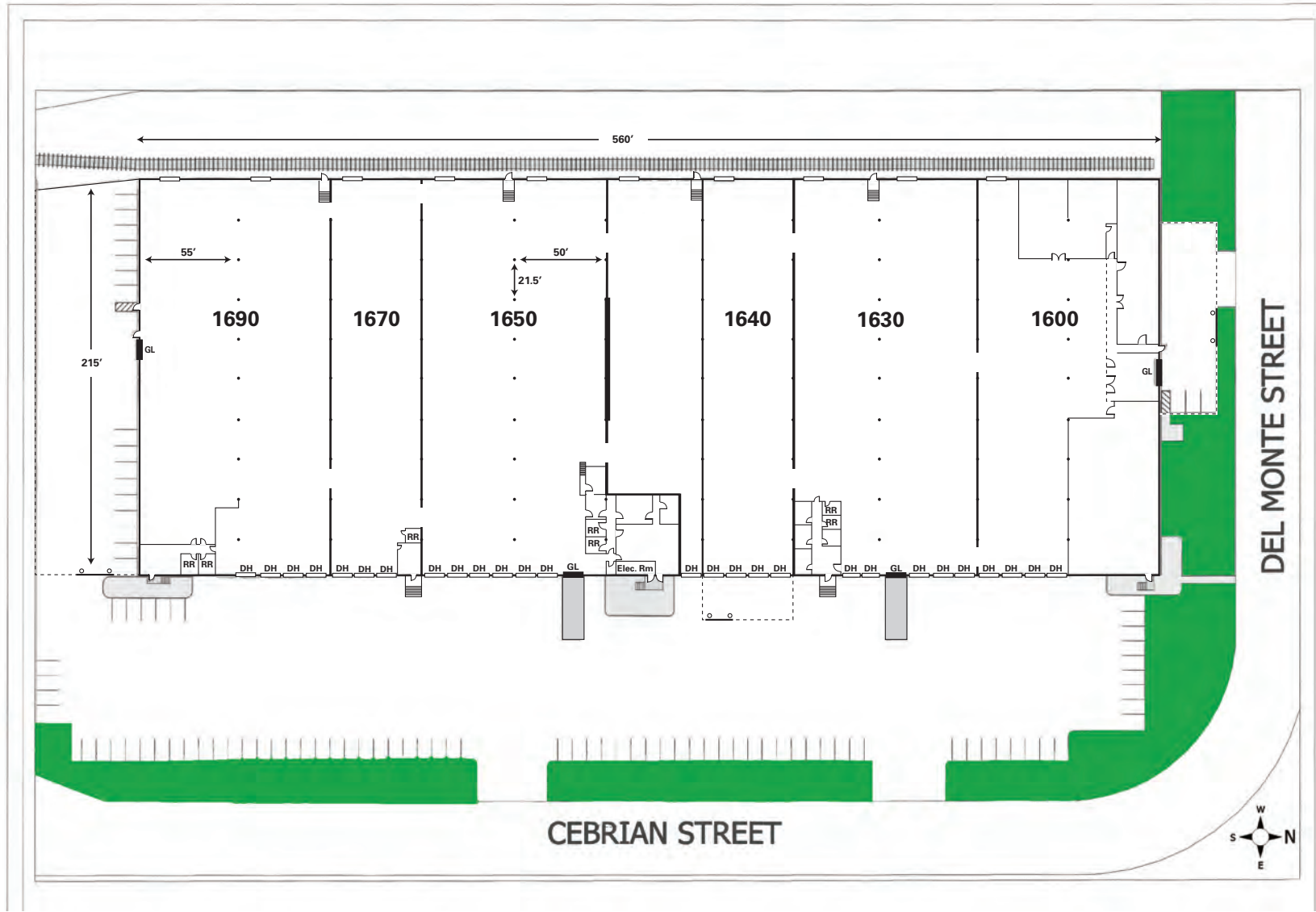
1600-1690 CEBRIAN STREET, WEST SACRAMENTO, CA
±120,400 SQUARE FEET



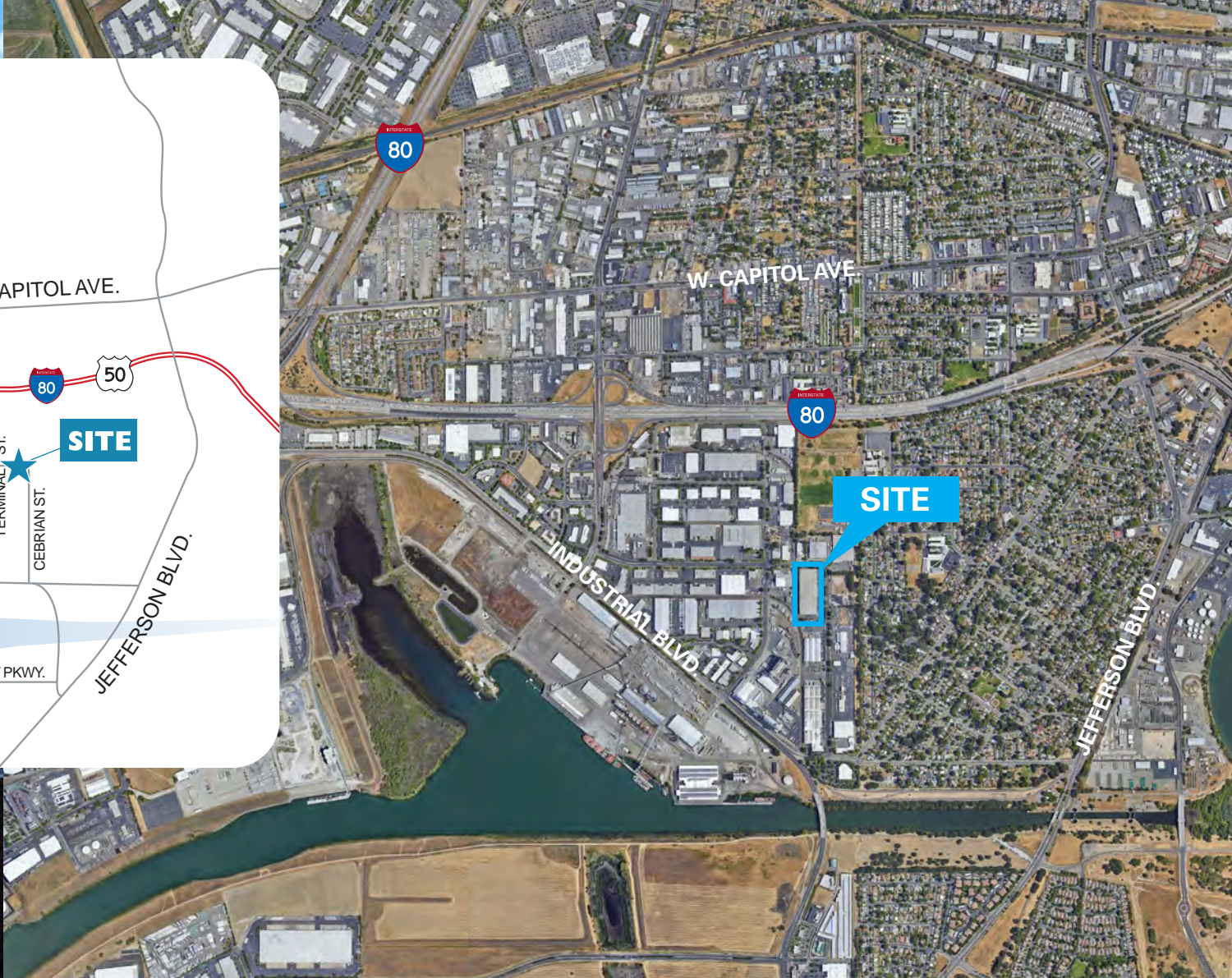
- ±120,400 SF Distribution Building
- Divisible to ±21,500 SF
- ±4,150 SF of Office Space
- 27 Dock High Loading Doors
- 4 Grade Level Doors
- 24' - 26' Clear Height
- Fully Sprinklered
- Potential Rail Access
- Skylights
- Gas Service
- Small Fenced Yard Areas
- Close Proximity to Interstate 5 and 80
- Master Lease Expires on April 30, 2027
- Longer Lease Term Available Directly from Landlord

HIGHLIGHTS

SITE PLAN



KEVIN JASPER, SIOR SENIOR MANAGING DIRECTOR | 916.826.7276 | KEVIN.JASPER@NMRK.COM | CA RE LICENSE #01164925
SEAN MAHONEY, SIOR SENIOR MANAGING DIRECTOR | 916.569.2328 | SEAN.MAHONEY@NMRK.COM | CA RE LICENSE #01332661



980 9TH STREET, SUITE 2500, SACRAMENTO, CA 95814 T. 916.920.4400

THE INFORMATION CONTAINED HEREIN HAS BEEN OBTAINED FROM SOURCES DEEMED RELIABLE BUT HAS NOT BEEN VERIFIED AND NO GUARANTEE, WARRANTY OR REPRESENTATION, EITHER EXPRESS OR IMPLIED, IS MADE WITH RESPECT TO SUCH INFORMATION. TERMS OF SALE OR LEASE AND AVAILABILITY ARE SUBJECT TO CHANGE OR WITHDRAWAL WITHOUT NOTICE. 02/25

KEVIN JASPER, SIOR SENIOR MANAGING DIRECTOR | 916.826.7276 | KEVIN.JASPER@NMRK.COM | CA RE LICENSE #01164925
 SEAN MAHONEY, SIOR SENIOR MANAGING DIRECTOR | 916.569.2328 | SEAN.MAHONEY@NMRK.COM | CA RE LICENSE #01332661

