

ROMULUS

TRADE CENTER

NOW LEASING:

BUILDING 1: 100,236 SF AVAILABLE IMMEDIATELY

BUILDING 4: 312,474 SF DELIVERY Q2 2026

BUILDING 6: ±282,909 SF DELIVERY Q4 2026



6 BUILDINGS | +/- 1,993,491 SF

MASTER PLANNED INDUSTRIAL PARK | VINING ROAD AND I-94 | ROMULUS, MI

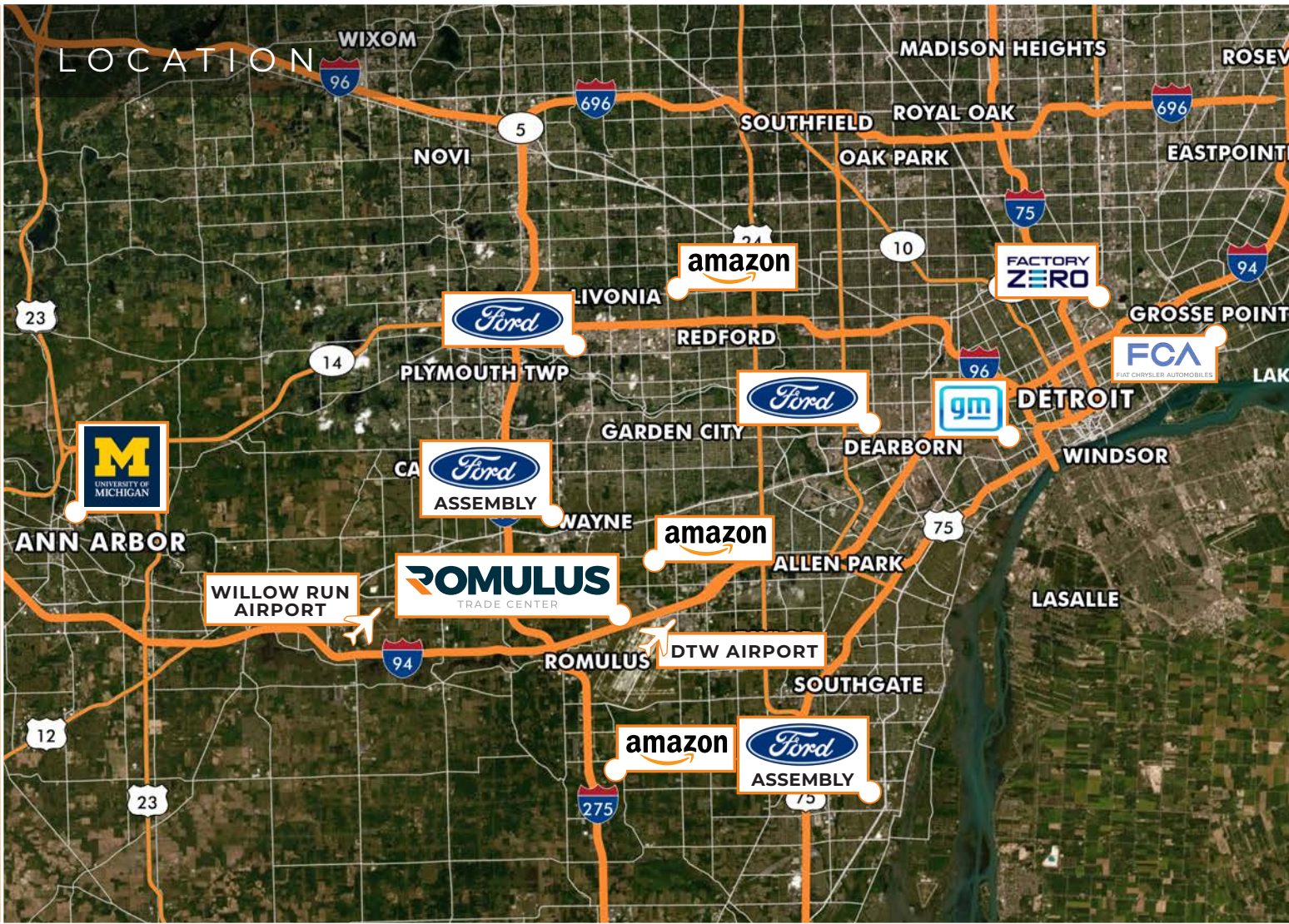
LAUREN SCARPACE
Vice Chairman
+1 248 351 2060
lauren.scarpace@cbre.com


EUGENE J. AGNONE III
Executive Vice President
+1 248 351 2024
eugene.agnone@cbre.com

BLAKE BURSTEIN
Vice President
+1 248 936 6890
blake.burstein@cbre.com


CBRE



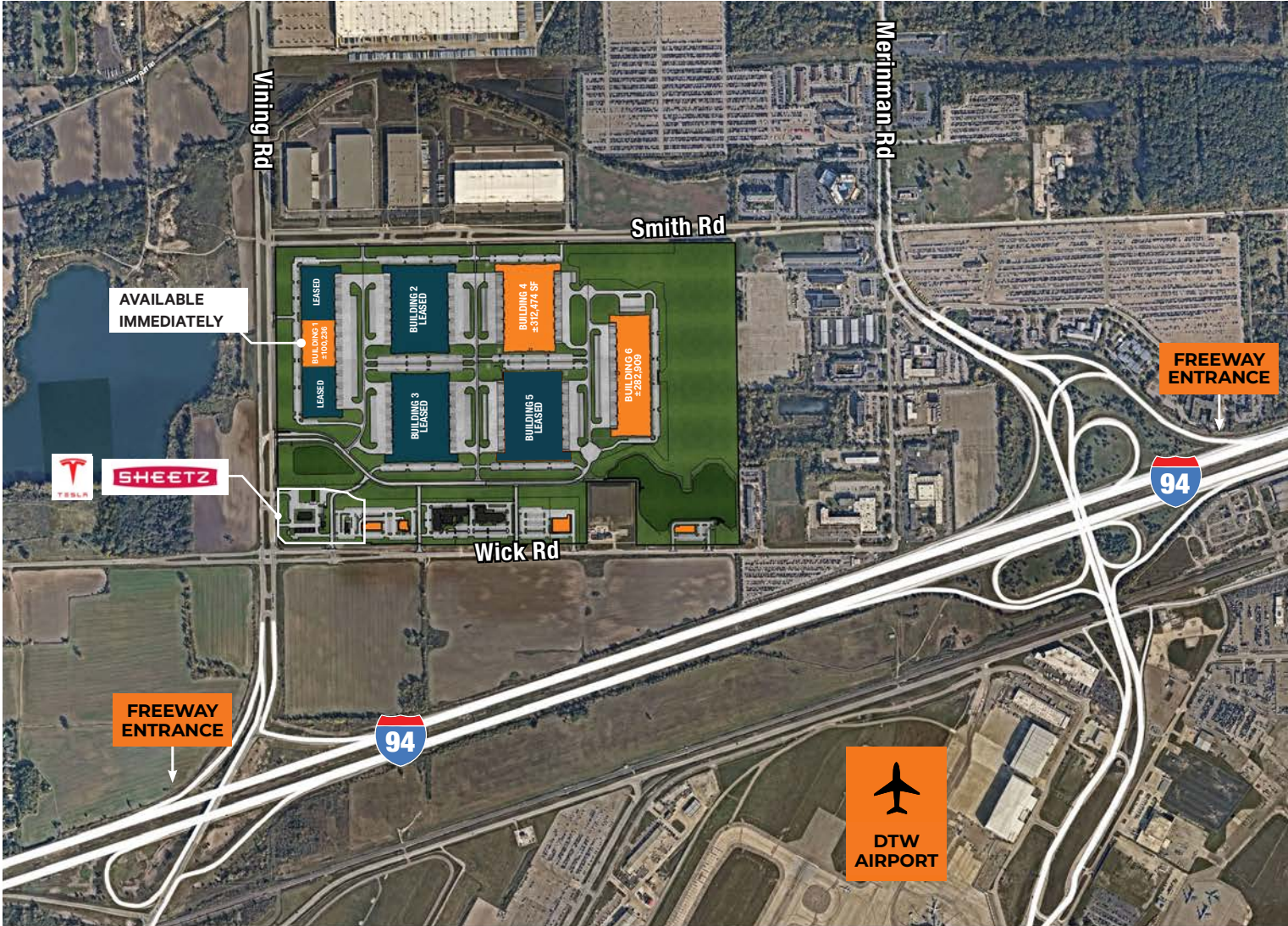


 2 MINUTES TO I-94
8 MINUTES TO I-275
20 MINUTES TO I-75

 2.7 MILES TO DTW
9.1 MILES TO WILLOW RUN

 20 MINUTES TO WINDSOR CANADA
23 MINUTES TO DOWNTOWN DETROIT
33 MINUTES TO OHIO

 ACCESS TO MULTIPLE AUTO
RELATED PLANTS AND HQ'S
PRIME LOCATION FOR AIR CARGO
AND E-COMMERCE TENANTS



KEY SITE ADVANTAGES



211 ACRE PARK



PROXIMITY TO AIRPORTS AND MAJOR EXPRESSWAYS



GREENFIELD DEVELOPMENT INCLUDING SPEC BUILDINGS AND AMPLE OPPORTUNITY FOR BUILT TO SUIT SITES



CLASS A DISTRIBUTION FACILITIES WITH GENEROUS TI PACKAGES



SIGNIFICANT POWER/WATER/SANITARY



ABUNDANT HIGHLY SKILLED LABOR POOL

SITE PHOTOS



ROMULUS

TRADE CENTER



LAUREN SCARPACE
Vice Chairman
+1 248 351 2060
lauren.scarpace@cbre.com

EUGENE J. AGNONE III
Executive Vice President
+1 248 351 2024
eugene.agnone@cbre.com

BLAKE BURSTEIN
Vice President
+1 248 936 6890
blake.burstein@cbre.com

CBRE



© 2025 CBRE, Inc. All rights reserved. This information has been obtained from sources believed reliable, but has not been verified for accuracy or completeness. Any projections, opinions, or estimates are subject to uncertainty. The information may not represent the current or future performance of the property. You and your advisors should conduct a careful, independent investigation of the property and verify all information. Any reliance on this information is solely at your own risk. CBRE and the CBRE logo are service marks of CBRE, Inc. and/or its affiliated or related companies in the United States and other countries. All other marks displayed on this document are the property of their respective owners. Photos herein are the property of their respective owners and use of these images without the express written consent of the owner is prohibited. PMStudio_September2023