



HIGHWAY 86

WREN MARKET SQUARE

3855 Highway 86, Easley, SC

NEW CONSTRUCTION
FOOD LION ANCHORED
RETAIL CENTER

FOR LEASE:

INLINE & ENDCAP
AVAILABLE

1,200-2,400 SF

**FOR SALE OR
GROUND LEASE:**
OUTPARCEL

0.86 ACRES

(864) 232-0019



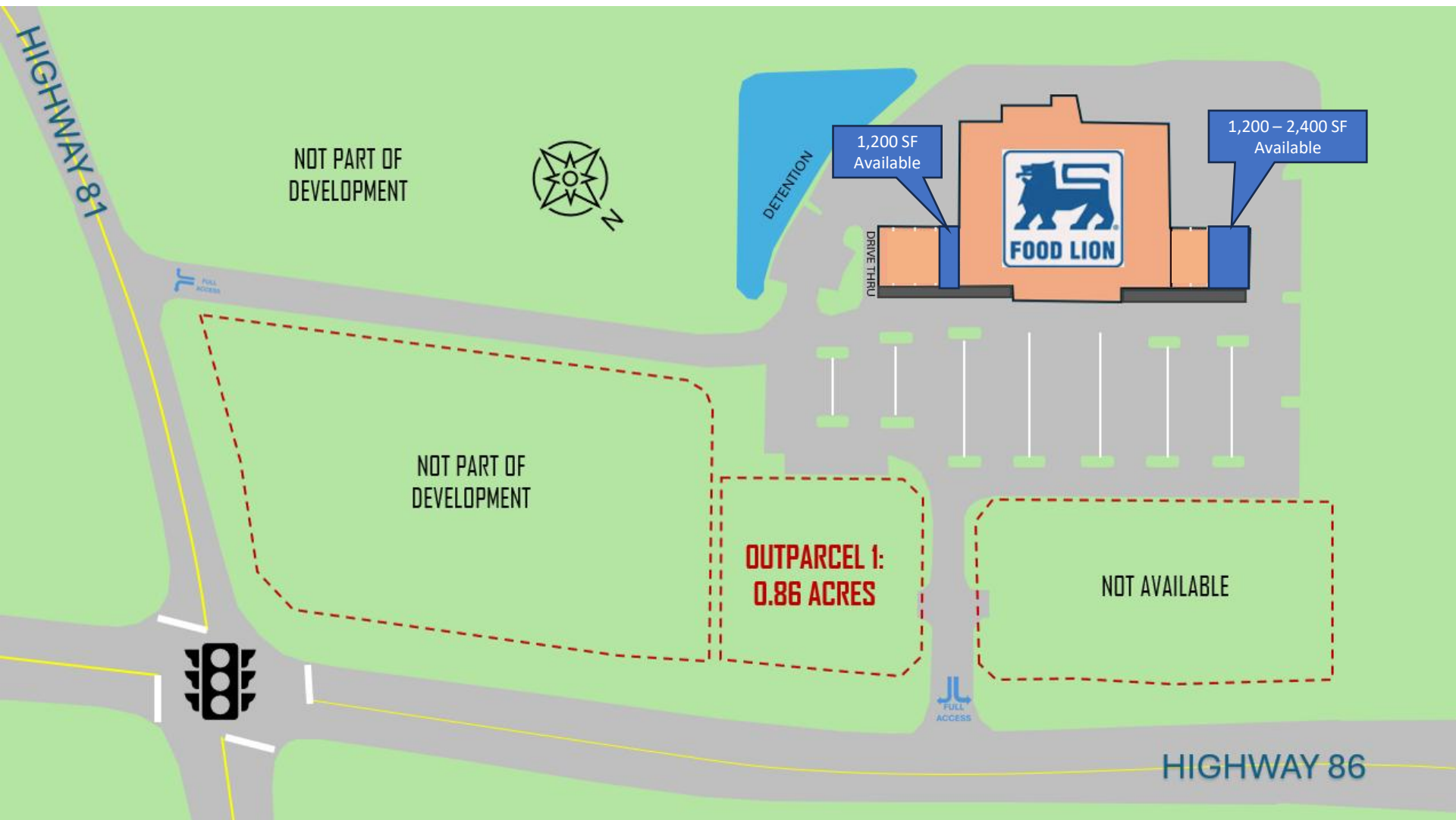


- New Construction beginning 2026, features a Food Lion anchored Neighborhood Center with 9,600 SF of shop space.
- Conveniently located in a rapidly growing market with multiple housing developments under construction.
- Exponential residential growth with a 10.7% population increase within a 7-minute drive.
- Growing population in residential area with the lack of Retail and Service creates strong demand.

Demographic Profile	7 Minutes	10 Minutes
2020 Population	14,430	29,709
2024 Population	15,979	33,447
2029 Projection	17,384	36,289
Growth 2020-2024	10.7%	12.7%
Projected Growth 2024-2029	8.8%	8.4%
Median Age	41.5	40.8
Median HH Income	\$94,559	\$84,404

Wren Market Square +/- 1,200 – 2,400 SF Available
3855 Highway 86. Easley, SC 29642

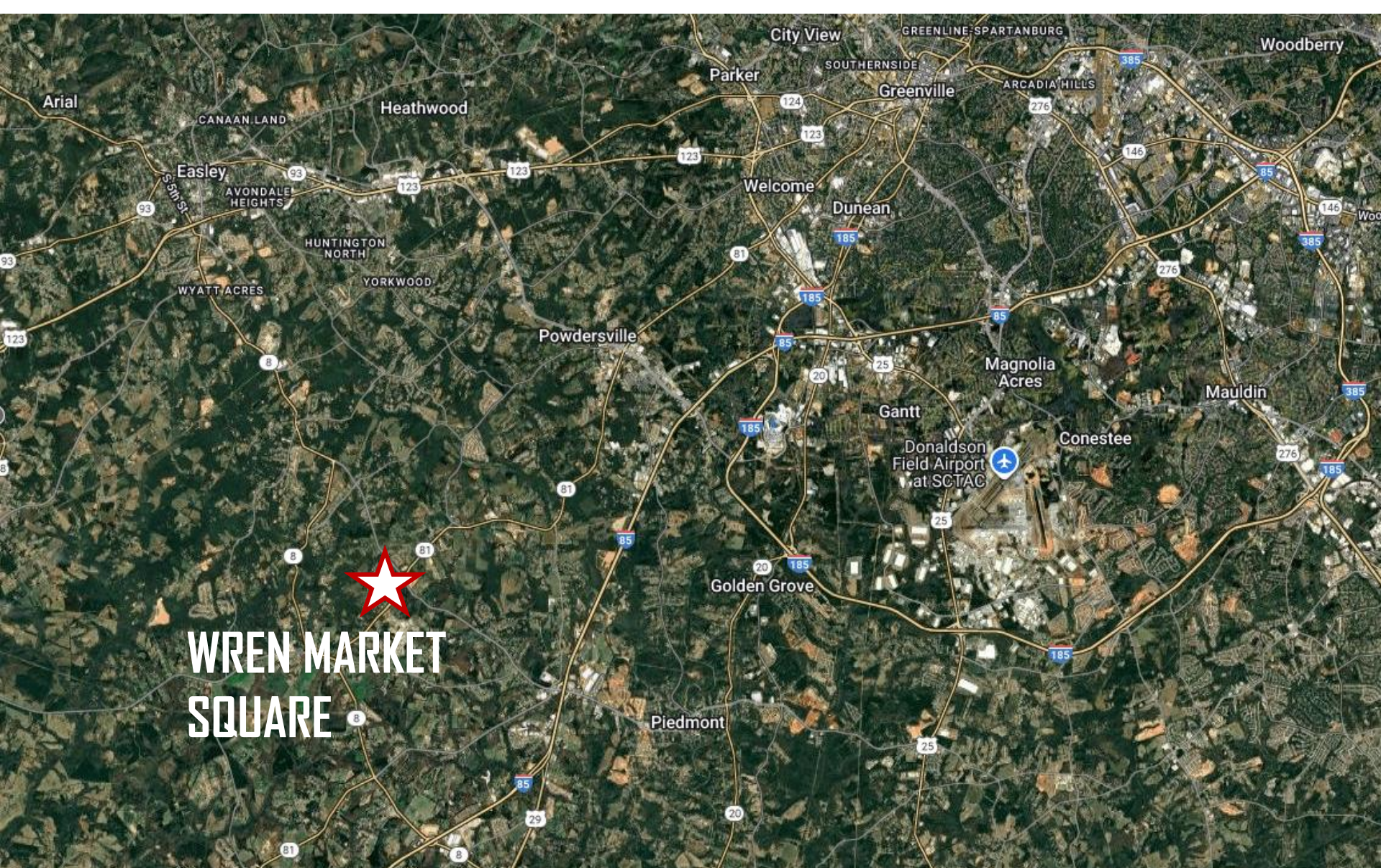
864-232-0019
RELIANCE
 Realty Advisors LLC



Wren Market Square +/- 1,200 – 2,400 SF Available
3855 Highway 86. Easley, SC 29642

864-232-0019



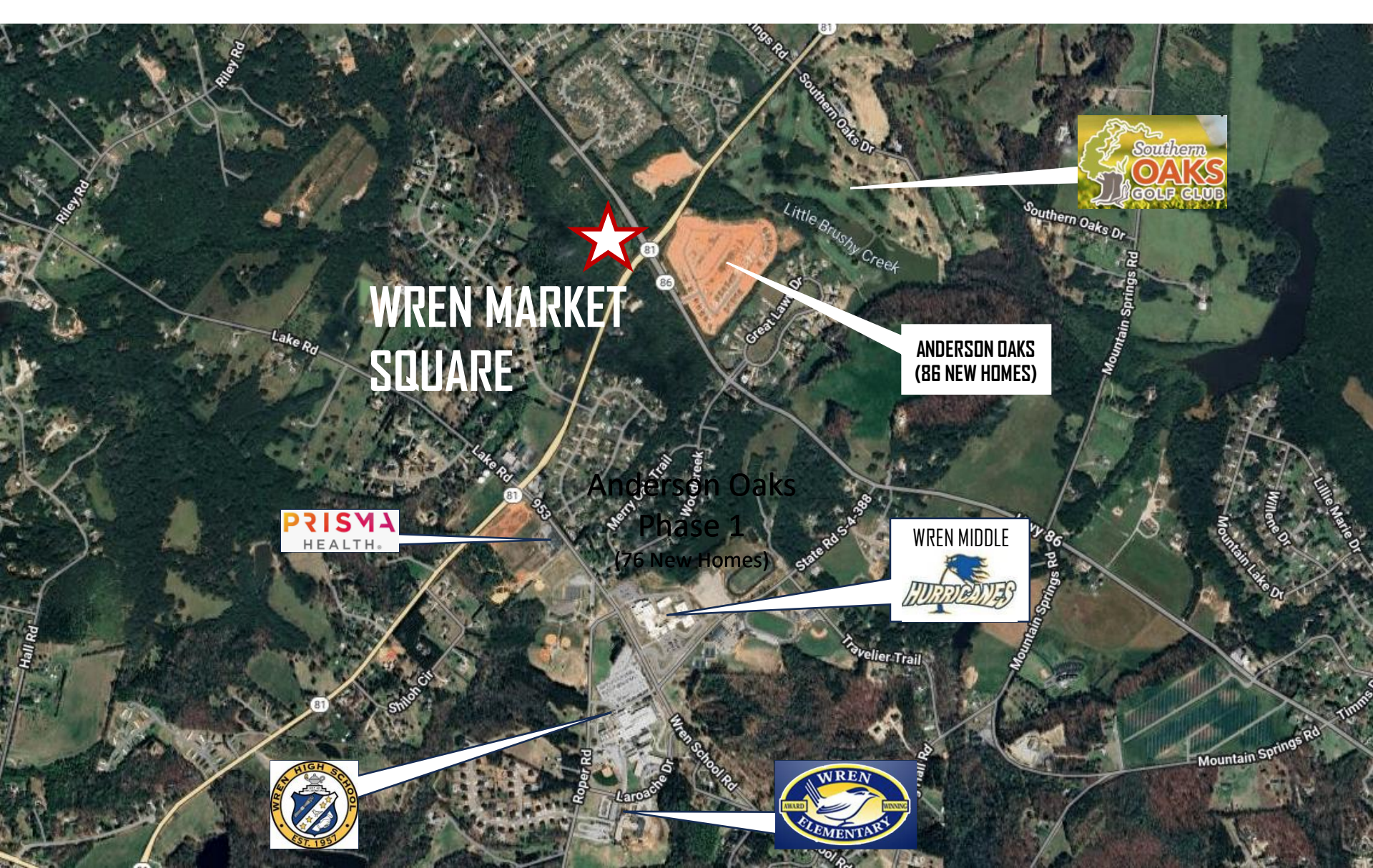


WREN MARKET SQUARE

Wren Market Square +/- 1,200 – 2,400 SF Available
3855 Highway 86. Easley, SC 29642

864-232-0019





WREN MARKET SQUARE



**ANDERSON OAKS
(86 NEW HOMES)**



**Anderson Oaks
Phase 1
(76 New Homes)**



Wren Market Square +/- 1,200 – 2,400 SF Available
3855 Highway 86. Easley, SC 29642

864-232-0019





Southern Oaks
Golf Course

Anderson Oaks
Phase 2
(44 New Homes)

Anderson Oaks
Phase 1
(86 New Homes)

Regional
C Store
(To be Announced)

**WREN MARKET
SQUARE**

March 5, 2026

Wren Market Square +/- 1,200 – 2,400 SF Available
3855 Highway 86. Easley, SC 29642

864-232-0019

