



\*Digitally altered image

# 202-210 N. CANON DRIVE BEVERLY HILLS, CA 90210

**JAY LUCHS**  
**GAVIN KETCHUM**  
**CARLY GELLER**  
**NEWMARK**  
PACIFIC

Executive Vice Chairman  
Director  
Director  
**JAYLUCHS.COM**

310-407-6585  
310-407-6593  
310-593-0760

[jay.luchs@nrmk.com](mailto:jay.luchs@nrmk.com)  
[gavin.ketchum@nrmk.com](mailto:gavin.ketchum@nrmk.com)  
[carly.geller@nrmk.com](mailto:carly.geller@nrmk.com)

CA RE Lic. #01260345  
CA RE Lic. #01929170  
CA RE Lic. #02153582

jayluchs.com  
**For Lease**  
**310 407 6585**  
**Jay Luchs**  
Los Angeles



\*Digitally altered image

## 202 N. CANON DRIVE BEVERLY HILLS, CA 90210

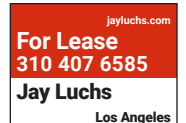
**JAY LUCHS**  
**GAVIN KETCHUM**  
**CARLY GELLER**  
**NEWMARK**  
PACIFIC

Executive Vice Chairman  
Director  
Director  
**JAYLUCHS.COM**

310-407-6585  
310-407-6593  
310-593-0760

[jay.luchs@nrmk.com](mailto:jay.luchs@nrmk.com)  
[gavin.ketchum@nrmk.com](mailto:gavin.ketchum@nrmk.com)  
[carly.geller@nrmk.com](mailto:carly.geller@nrmk.com)

CA RE Lic. #01260345  
CA RE Lic. #01929170  
CA RE Lic. #02153582





\*Digitally altered image

208-210 N. CANON DRIVE  
BEVERLY HILLS, CA 90210

**JAY LUCHS**  
**GAVIN KETCHUM**  
**CARLY GELLER**  
**NEWMARK**  
PACIFIC

Executive Vice Chairman  
Director  
Director  
**JAYLUCHS.COM**

310-407-6585  
310-407-6593  
310-593-0760

[jay.luchs@nrmk.com](mailto:jay.luchs@nrmk.com)  
[gavin.ketchum@nrmk.com](mailto:gavin.ketchum@nrmk.com)  
[carly.geller@nrmk.com](mailto:carly.geller@nrmk.com)

CA RE Lic. #01260345  
CA RE Lic. #01929170  
CA RE Lic. #02153582

jayluchs.com  
**For Lease**  
**310 407 6585**  
**Jay Luchs**  
Los Angeles



208-210 N. CANON DRIVE  
RENDERING

**JAY LUCHS**  
**GAVIN KETCHUM**  
**CARLY GELLER**  
**NEWMARK**  
PACIFIC

Executive Vice Chairman  
Director  
Director  
**JAYLUCHS.COM**

310-407-6585  
310-407-6593  
310-593-0760

[jay.luchs@nrmk.com](mailto:jay.luchs@nrmk.com)  
[gavin.ketchum@nrmk.com](mailto:gavin.ketchum@nrmk.com)  
[carly.geller@nrmk.com](mailto:carly.geller@nrmk.com)

CA RE Lic. #01260345  
CA RE Lic. #01929170  
CA RE Lic. #02153582

jayluchs.com  
**For Lease**  
**310 407 6585**  
**Jay Luchs**  
Los Angeles

**USE**

Retail/Restaurant

**SIZE**

**202 N. Canon Drive**

Ground: ±6,518 SF  
Basement: ±406 SF  
2nd Floor: ±2,685 SF  
Total: ±9,609 SF

**AVAILABLE**

Arranged

**RENT**

Available upon Request

**208 N. Canon Drive**

Ground: ±3,916 SF\*

**FRONTAGE**

Approx. 80' on N. Canon Drive  
Approx. 140' on Clifton Way

**210 N. Canon Drive**

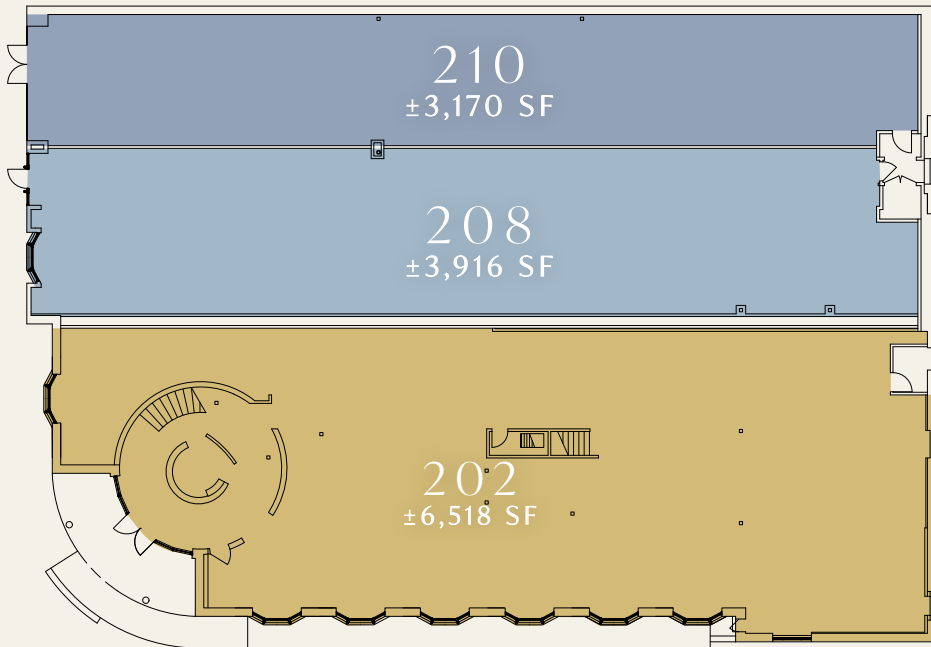
Ground: ±3,170 SF\*

**PARKING**

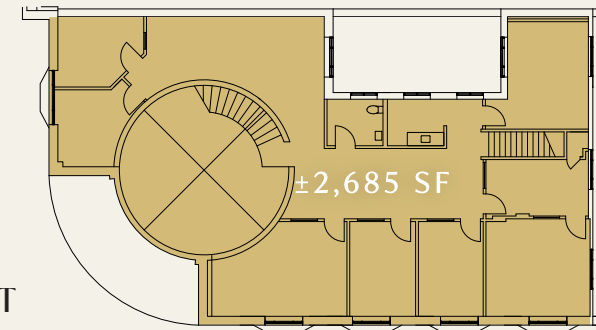
Adjacent monthly parking options available

\*Can be combined to ±7,086 SF

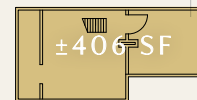
**GROUND FLOOR**



**2ND FLOOR**



**BASEMENT**



**TOTAL AVAILABLE: ±16,695 SF**

**JAY LUCHS**  
**GAVIN KETCHUM**  
**CARLY GELLER**  
**NEWMARK**  
PACIFIC

Executive Vice Chairman  
Director  
Director  
**JAYLUCHS.COM**

310-407-6585  
310-407-6593  
310-593-0760

jay.luchs@nrmk.com  
gavin.ketchum@nrmk.com  
carly.geller@nrmk.com

CA RE Lic. #01260345  
CA RE Lic. #01929170  
CA RE Lic. #02153582

jayluchs.com  
**For Lease**  
**310 407 6585**  
**Jay Luchs**  
Los Angeles

THE  
MAYBOURNE  
BEVERLY HILLS

MARU COFFEE®



Total Population  
2025

±30,983



Total Daytime  
Population

±82,690



Median  
Age

43.4



Average Household  
Income

\$196,292



Median  
Home Value

\$2 Million

Demographics: Within 1 mile, ESRI 2025

**JAY LUCHS**  
**GAVIN KETCHUM**  
**CARLY GELLER**  
**NEWMARK**  
PACIFIC

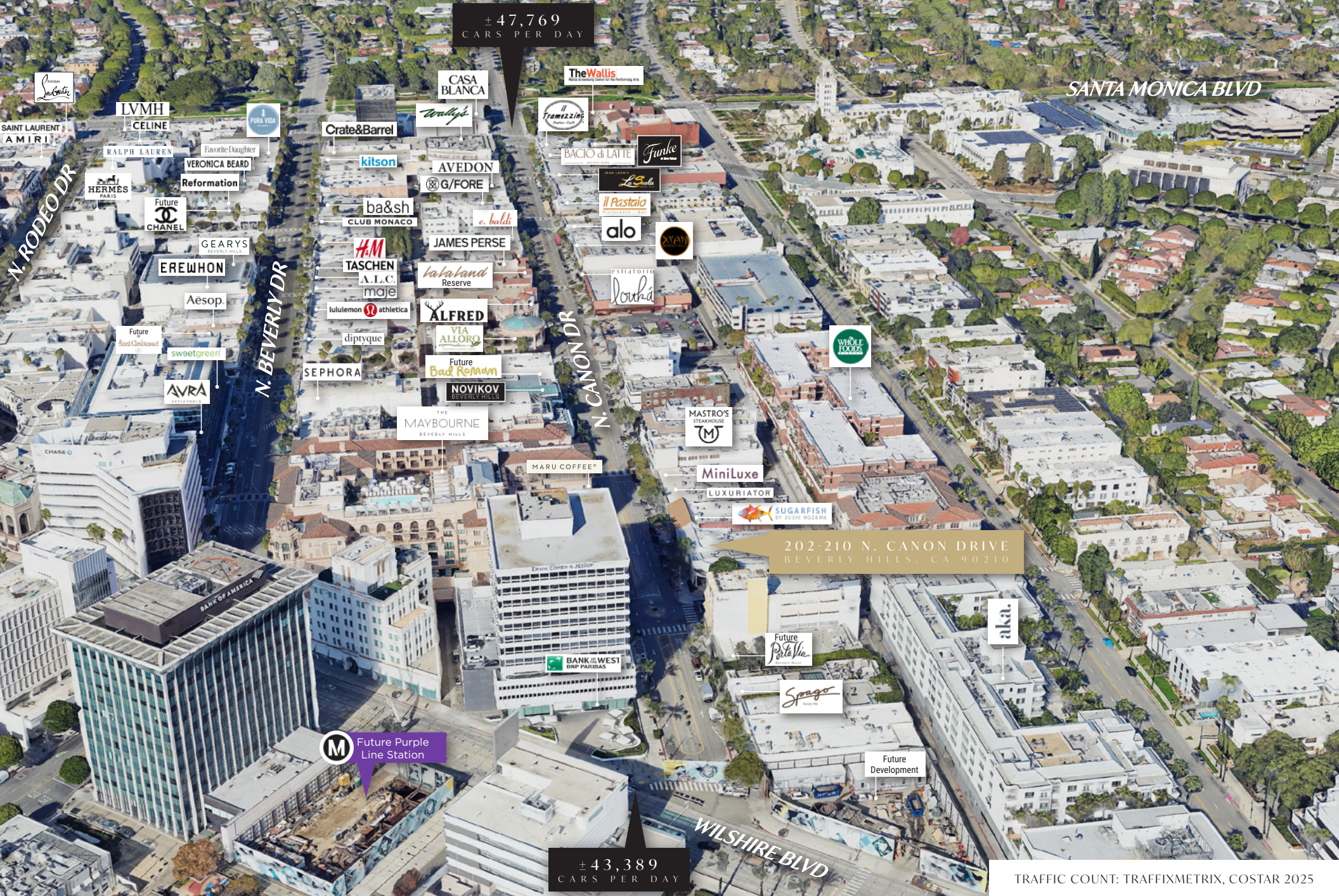
Executive Vice Chairman  
Director  
Director  
**JAYLUCHS.COM**

310-407-6585  
310-407-6593  
310-593-0760

[jay.luchs@nmrk.com](mailto:jay.luchs@nmrk.com)  
[gavin.ketchum@nmrk.com](mailto:gavin.ketchum@nmrk.com)  
[carly.geller@nmrk.com](mailto:carly.geller@nmrk.com)

CA RE Lic. #01260345  
CA RE Lic. #01929170  
CA RE Lic. #02153582

jayluchs.com  
**For Lease**  
**310 407 6585**  
**Jay Luchs**  
Los Angeles



± 47,769  
CARS PER DAY

SANTA MONICA BLVD

202-210 N. CANON DRIVE  
BEVERLY HILLS, CA 90210

± 43,389  
CARS PER DAY

TRAFFIC COUNT: TRAFFIXMETRIX, COSTAR 2025

**JAY LUCHS**  
**GAVIN KETCHUM**  
**CARLY GELLER**  
**NEWMARK**  
PACIFIC

Executive Vice Chairman  
Director  
Director  
**JAYLUCHS.COM**

310-407-6585  
310-407-6593  
310-593-0760

jay.luchs@nrmk.com  
gavin.ketchum@nrmk.com  
carly.geller@nrmk.com

CA RE Lic. #01260345  
CA RE Lic. #01929170  
CA RE Lic. #02153582

jayluchs.com  
**For Lease**  
**310 407 6585**  
**Jay Luchs**  
Los Angeles

N. SANTA MONICA BLVD

**The Wallis**  
Wallis Aronberg Center for the Performing Arts

S. SANTA MONICA BLVD

CASA BLANCA  
Medical Building

Real Estate Office  
*Tramazing*  
BACIO di LATTE  
Canon Collectables  
Edelweiss Chocolates  
Selfish  
Brendratti

ANNEISTERON  
Formerly *PortaVia*  
BEVERLY HILLS

JEAN LESY'S  
*LaScala*  
BEVERLY HILLS

DAN DEBACH  
OPTICAL OUTLOOK

JADE BEVERLY HILLS  
Eyebars  
NAIL SUNNY  
NAIL & SPA SALON

AZUR (coming soon)  
Offices

PARKING STRUCTURE

*Walleye*

Keller Williams  
The Courtyard  
Refine Luxury Goods  
Future Photography Studio  
Future Yume Sushi Bar  
AVEDON  
Shole  
Future LOGAN HOLLOWELL

G/FORE

Garfield Pharmacy  
*la bella*  
JAMES PERSE

Offices  
Future MOTHER

*PIZZERIA STREET*

Cavcas  
Modern Esthetics  
Med spa  
Reserve  
Society Hounds

*lalaland*

ALFRED

260  
LA

Village on Canon  
Previews Banker  
Coldwell Banker

VIA ALLORO  
RESTAURANT & BAR

No. 275  
Nest Seekers  
Future *Bad Religion*  
Discovery Land and Sound Ventures  
NOVIKOV  
BEVERLY HILLS

PARKING STRUCTURE

*Shapel*

Terrace Restaurant

THE MAYBOURNE  
BEVERLY HILLS

MARU COFFEE

BANK OF THE WEST  
BNP PARIBAS

Real Estate Office  
*Frankie*

ANNEISTERON  
Formerly *PortaVia*  
BEVERLY HILLS

JEAN LESY'S  
*LaScala*  
BEVERLY HILLS

DAN DEBACH  
OPTICAL OUTLOOK

*il Pastoiaio*  
RESTAURANTE - BAR

BRIGHTON WY

alo  
Attic Konzept  
*Altimate* (coming soon)

Florie Couture  
Versai

GIUSEPPE FRANCO SALON  
Mishka  
T.Z.U.R.I.  
BEVERLY HILLS EST. 1988  
Nazareth's Fine Cigars

ESTIATORIO

*looka*

Filmon.tv/Salon 90210  
Former RITE AID

DAYTON WY

OBAGI MEDICAL  
Future Regent  
MASTRO'S STEAKHOUSE  
MiniLuxe LUXURIATOR  
Barnes International Realty (offices)

202-210 N. CANON DRIVE  
BEVERLY HILLS, CA 90210

Super Care Drugs  
Lido Equities Group  
future MICHAEL M  
W Barber Shop  
SUGA REISH  
BY SUSHI INOZANA

CLIFTON WY

Pacific Premier Bank  
Fred Hayman Building  
*Seeger*  
PRIVE  
Future *PortaVia*  
BEVERLY HILLS

New Pacific

WILSHIRE BLVD

The information contained herein has been obtained from sources deemed reliable but has not been verified and no guarantee, warranty or representation, either express or implied, is made with respect to such information. Terms of sale or lease and availability are subject to change or withdrawal without notice.

\*Digitally altered photos, view original photos [here](#)

**JAY LUCHS** Executive Vice Chairman 310-407-6585  
**GAVIN KETCHUM** Director 310-407-6593  
**CARLY GELLER** Director 310-593-0760  
**NEWMARK** JAYLUCHS.COM  
PACIFIC

[jay.luchs@nrmk.com](mailto:jay.luchs@nrmk.com)  
[gavin.ketchum@nrmk.com](mailto:gavin.ketchum@nrmk.com)  
[carly.geller@nrmk.com](mailto:carly.geller@nrmk.com)

CA RE Lic. #01260345  
CA RE Lic. #01929170  
CA RE Lic. #02153582

Corporate RE License #01796698

[jayluchs.com](http://jayluchs.com)  
**For Lease**  
**310 407 6585**  
**Jay Luchs**  
Los Angeles