



# INDUSTRIAL SPACE

<b>Available</b>	5,000 - 50,000 sf
<b>Office</b>	to suit
<b>Clear Height</b>	16 feet +
<b>Dock</b>	5 exterior
<b>Drive in Door</b>	2
<b>Power</b>	AMPLE
<b>Parking</b>	60+ cars or 30 trailers
<b>Zoning</b>	PMD 14
<b>Lease Rate</b>	\$10 modified gross
<b>Comments</b>	Access to labor, Public transportation to site

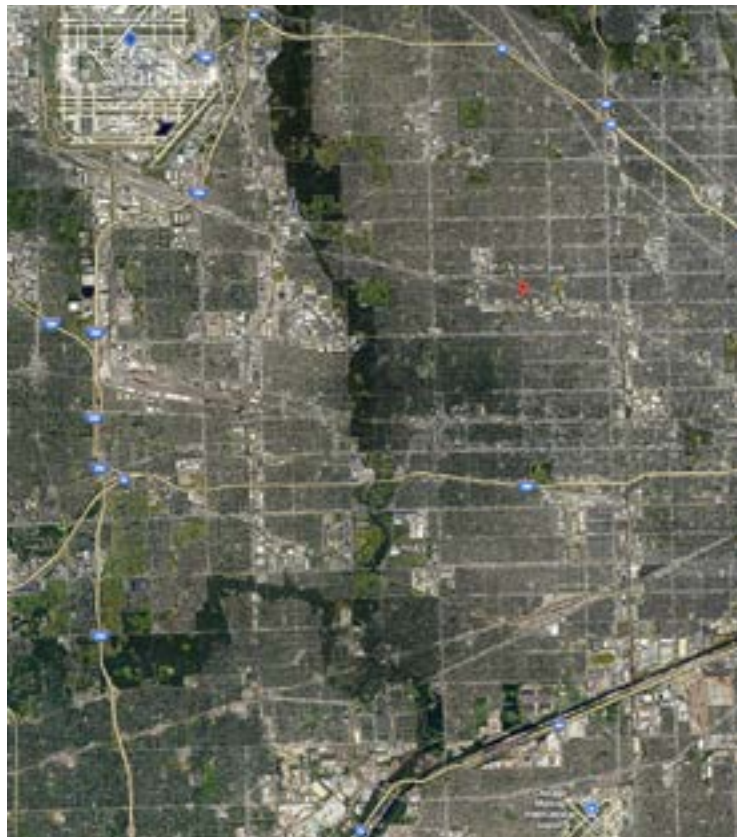
**For more information, please contact:**

**Steven Kohn**  
Principal, Industrial Services  
steven.kohn@avisonyoung.com  
+1847 341 6048

**Jay Maher**  
Senior Vice President, Industrial Services  
jay.maher@avisonyoung.com  
+1 773 520 5111

# Industrial space available for lease

2051 N Austin Ave  
Chicago, IL 60639



6.3 miles to O'Hare  
Airport

6.7 miles to I-294

8.94 miles to Downtown

4.44 miles to 90 West

4.44 miles to 90 East

3.2 miles to 290

.25 miles to Metra

200' Austin & Dickens bus  
stop

10.3 miles to Midway  
Airport

## For further information

**Steven A. Kohn, SIOR**  
Principal, Industrial  
+1 847.341.6048  
steven.kohn@avisonyoung.com

**Jay Maher**  
Senior Vice President  
+1 773 520 5111  
jay.maher@avisonyoung.com