

FOR LEASE

PORTA
& CO.

WEST END NEIGHBORHOOD

251 Danforth Street, Portland, Maine



PROPERTY HIGHLIGHTS

- 1,143± SF of high visibility retail space
- Ground floor, corner unit with direct access to Danforth St
- Conveniently located in Portland's West End Neighborhood
- Large windows offer excellent exposure and natural light
- Available August 1, 2026
- Lease Rate: \$2,500/Month Gross + Utilities

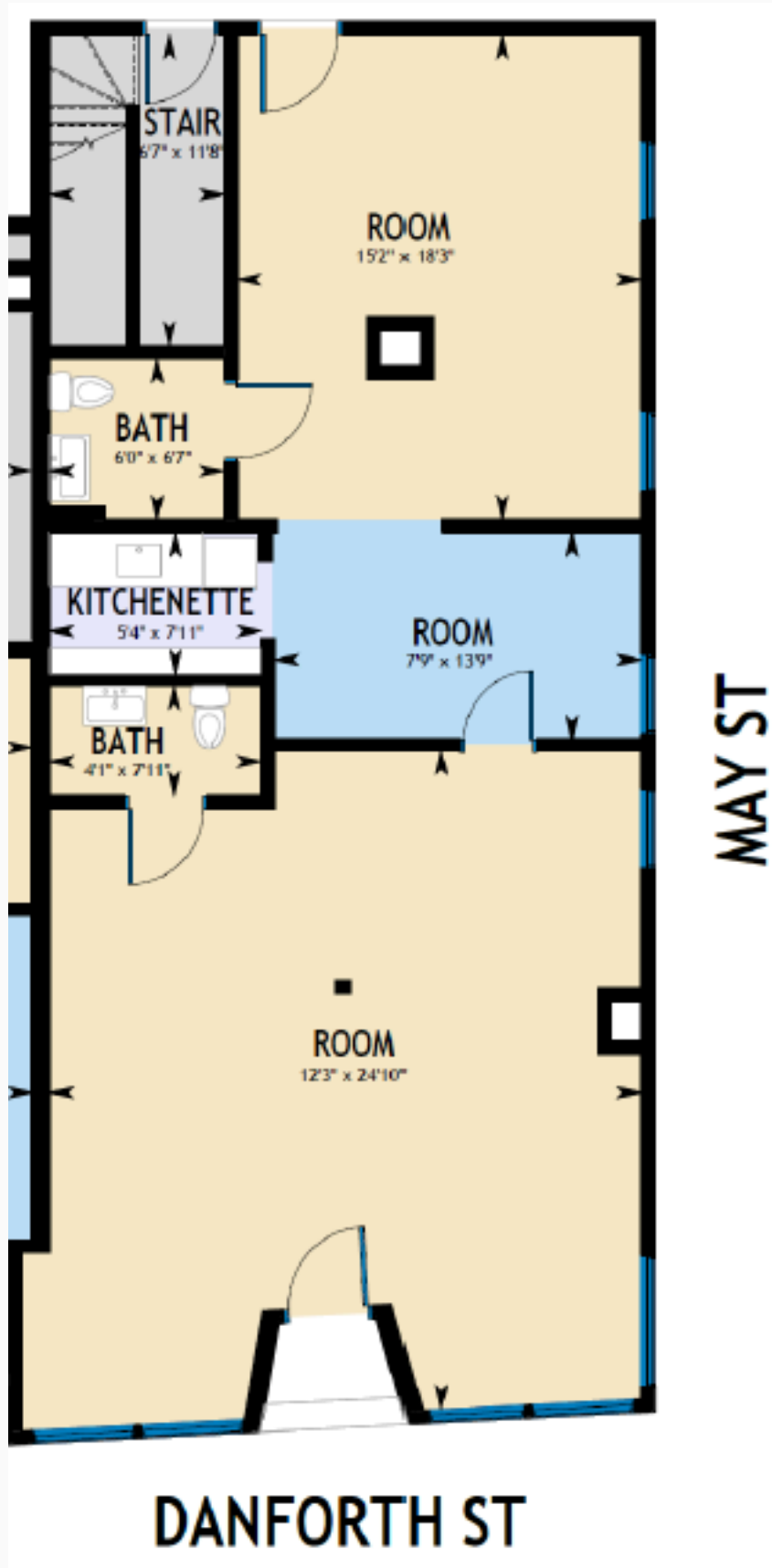


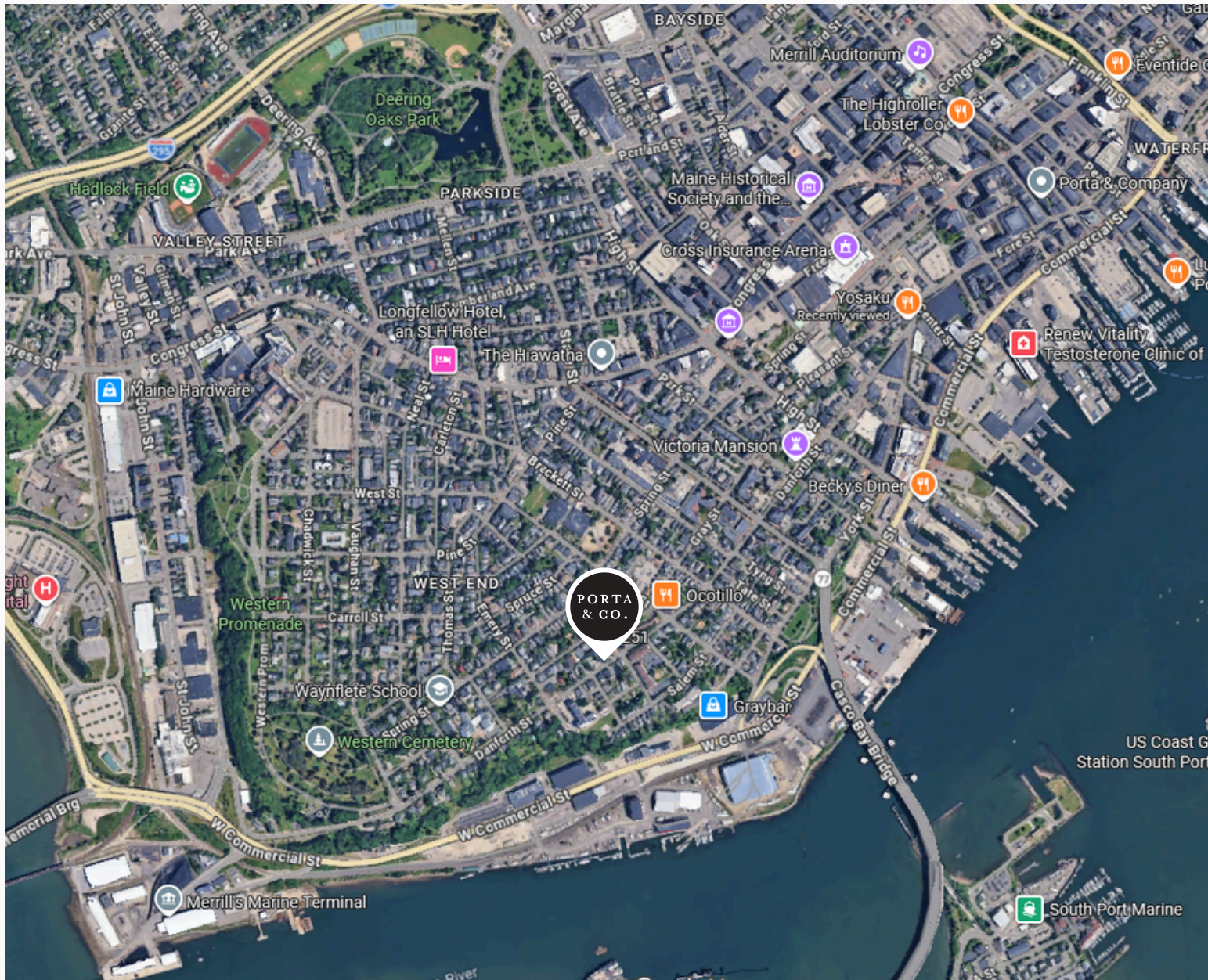
PROPERTY DETAILS

Address:	251 Danforth Street, Portland, ME
Zoning:	B-1 (Neighborhood Business)
Building Size:	11,800± SF
Available Space:	1,143± SF
Year Built:	1915
Restrooms:	Yes, Two (2)
Utilities:	Tenant Responsible for electric
Lease Rate:	\$2,500/Month Gross



FLOOR PLAN





CONTACT US



Charles Day

Partner

C: 207-838-3335

O: 207-747-1515

cday@portacompany.com

This information has been obtained from sources believed reliable and is intended for informational use only. The information contained herein has not been verified for accuracy or completeness. It is recommended that prospective tenants and buyers conduct their own inspection of the property and verify all information. Any reliance on this information is solely at your own risk. Photos herein are the property of their respective owners. Use of these images without the express written consent of the owner is prohibited.

PORTA & CO.

COMMERCIAL REAL ESTATE

30 Milk Street, Second Floor
Portland, ME 04101
207-747-1515
www.portacompany.com