

PRIME ROAD FRONTAGE OPPORTUNITY FOR SALE

3.16 ACRES AND (2) BUILDINGS TOTALING ±9,000 SF ON CASTLE HAYNE ROAD





Three parcels totaling 3.16 Acres with (2) metal building totaling +/- 9,000 SF. The buildings were purpose-built in 1982 for the Castle Hayne Volunteer Fire Department and are now currently being used by New Hanover County Emergency Services who will be relocating at the end of 2025. Use of the existing buildings could provide an opportunity for an owner occupier needing garage space for trucks, trailers and equipment or future investment. It could also be retrofitted for other uses wanting frontage and visibility on a major thorough fare.

List Price: \$2,500,000

5301, 5307 & 5311 CASTLE HAYNE ROAD | CASTLE HAYNE, NC

FOR SALE

CODY CRESS, SIOR
910 409 8421

cody.cress@scpcommercial.com

TYLER PEGG
910 512 3550

tyler.pegg@scpcommercial.com





FRONT BUILDING

Total Building Size: ±6,954 SF

Features:

- Eight (8) 12'x12' electric grade-level drive-in doors provide drive-thru access
- Clear-span garage with 15' eave height and 23f' at center
- Small office with additional large open meeting room and full-service kitchen
- 3 restrooms, one with shower
- Work out / storage area
- Additional rear corner kitchen with 3 compartment steel sinks
- Building dimensions are 114' Wide x 61' Deep



BACK BUILDING

Total Building Size: ±2,000 SF

Features:

- Three (3) 12'x12' electric grade-level drive-in front-loaded doors
- Clear-span heated garage with 14' eave height and 22' at center
- Building dimensions are 50' Wide x 40' Deep

Additional +/- 300 SF utility building houses additional space for storage of tools, smaller equipment, etc. It also has washer and dryer hook ups, Culligan water softener and designated air compressor closet.

Potential uses for the property will need to be confirmed with New Hanover County Zoning Office. The property is currently zoned CZD-B2 under New Hanover County Zoning.

The total foot print of the property consists of 3.16 Acres with two of the parcels making up approximately 2 acres that are undeveloped. This open area is mostly cleared and ideal for use as a laydown yard, equipment storage, overflow parking, or potential redevelopment.

The distance to I-40 is +/- 2.5 miles via Holly Shelter Road and Castle Hayne Road. I-140 interchange is also nearby, offering additional east-west connectivity and quick access to US-117 and NC-133 for local and regional travel.

5301, 5307 & 5311 CASTLE HAYNE ROAD | CASTLE HAYNE, NC

FOR SALE

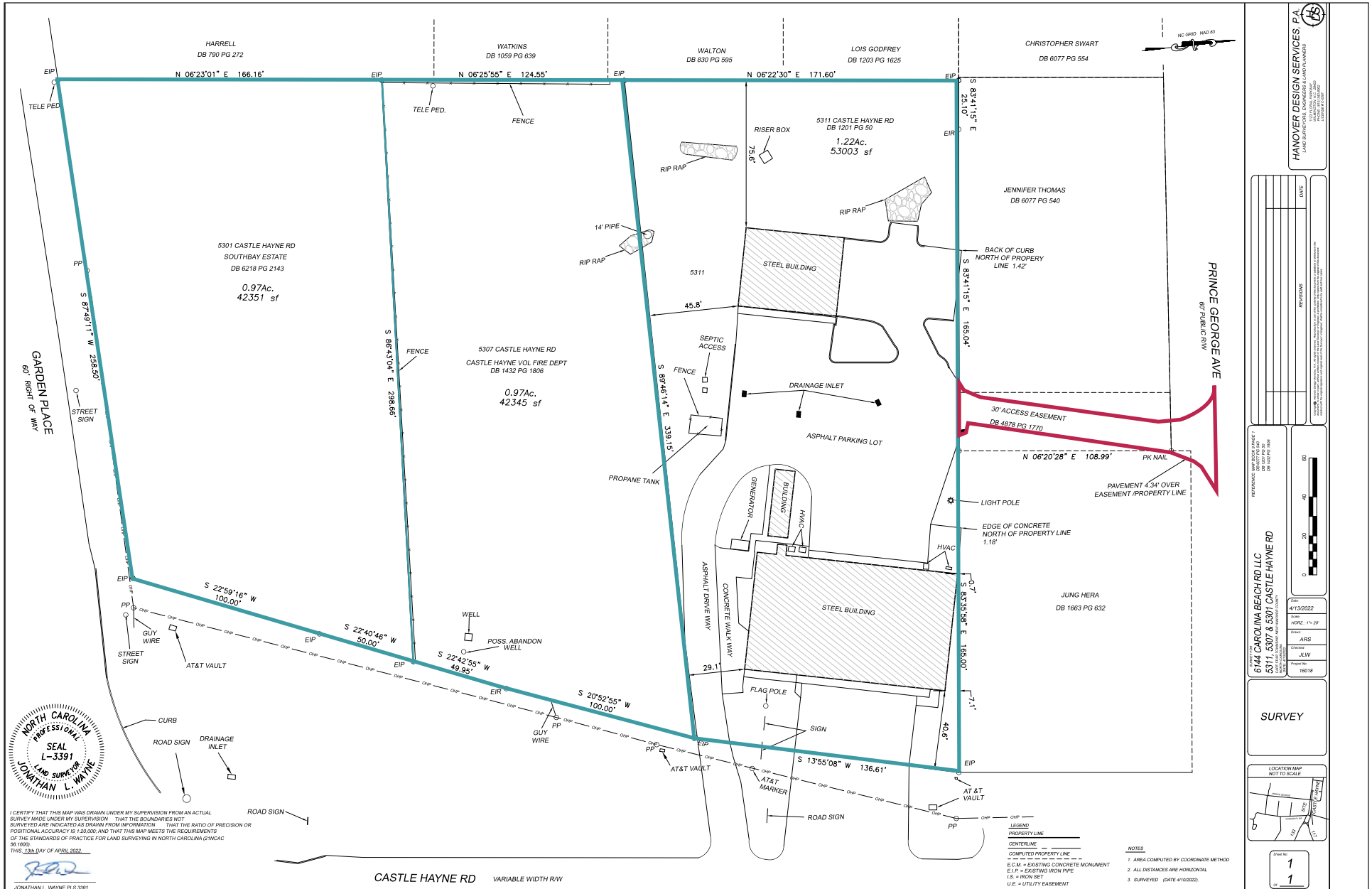
CODY CRESS, SIOR
910 409 8421

cody.cress@scpcommercial.com

TYLER PEGG
910 512 3550

tyler.pegg@scpcommercial.com





5301, 5307 & 5311 CASTLE HAYNE ROAD | CASTLE HAYNE, NC

FOR SALE

CODY CRESS, SIOR
910 409 8421
cody.cress@scpcommercial.com

TYLER PEGG
910 512 3550
tyler.pegg@scpcommercial.com



HANOVER DESIGN SERVICES, PA
LAND SURVEYOR, ENGINEER, LAND PLANNERS
1000 W. HANOVER AVENUE, SUITE 200
HANOVER, NC 28031
TEL: 704.771.1111
WWW.HANOVERDESIGN.COM

| NO. | DATE | REVISIONS |
|-----|------|-----------|
| | | |

PROJECT: 6144 CAROLINA BEACH RD LLC
5311, 5307 & 5301 CASTLE HAYNE RD
DATE: 4/13/2022
SCALE: HORIZ. 1" = 20'
DRAWN BY: ARS
CHECKED BY: JLW
PROJECT NO.: 18018

SURVEY

LOCATION MAP NOT TO SCALE

Sheet No. 1 of 1



5301, 5307 & 5311 CASTLE HAYNE ROAD | CASTLE HAYNE, NC

FOR SALE

CODY CRESS, SIOR

910 409 8421

cody.cress@scpcommercial.com

TYLER PEGG

910 512 3550

tyler.pegg@scpcommercial.com





5301, 5307 & 5311 CASTLE HAYNE ROAD | CASTLE HAYNE, NC

FOR SALE

CODY CRESS, SIOR

910 409 8421

cody.cress@scpcommercial.com

TYLER PEGG

910 512 3550

tyler.pegg@scpcommercial.com





5301, 5307 & 5311 CASTLE HAYNE ROAD | CASTLE HAYNE, NC

FOR SALE

CODY CRESS, SIOR
910 409 8421

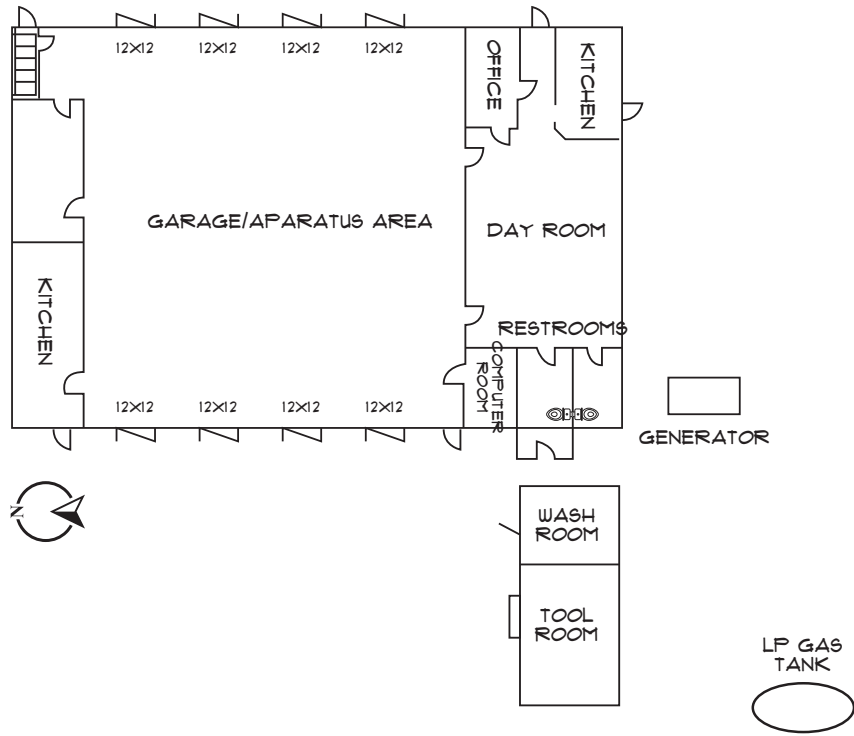
cody.cress@scpcommercial.com

TYLER PEGG
910 512 3550

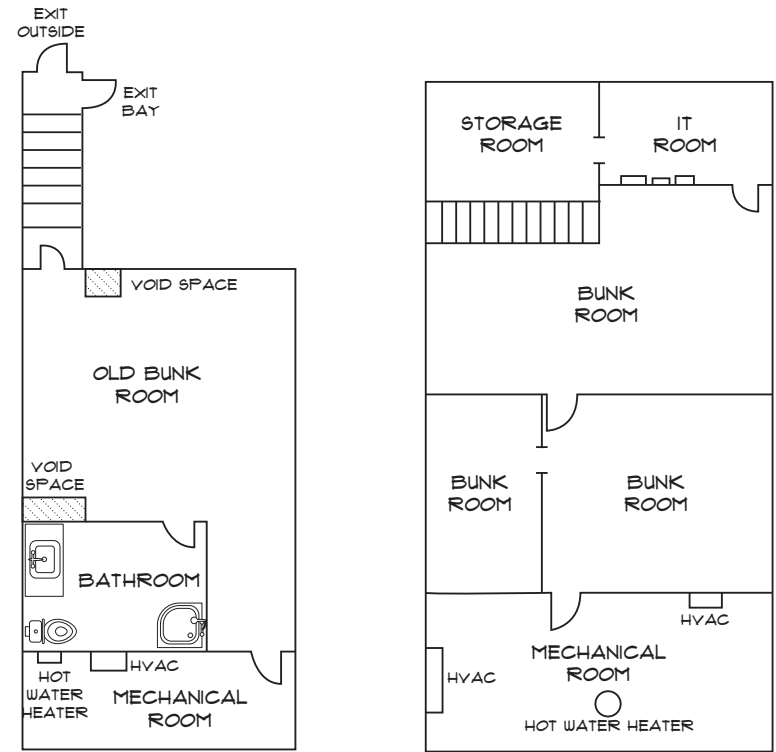
tyler.pegg@scpcommercial.com



FIRST FLOOR



SECOND FLOOR



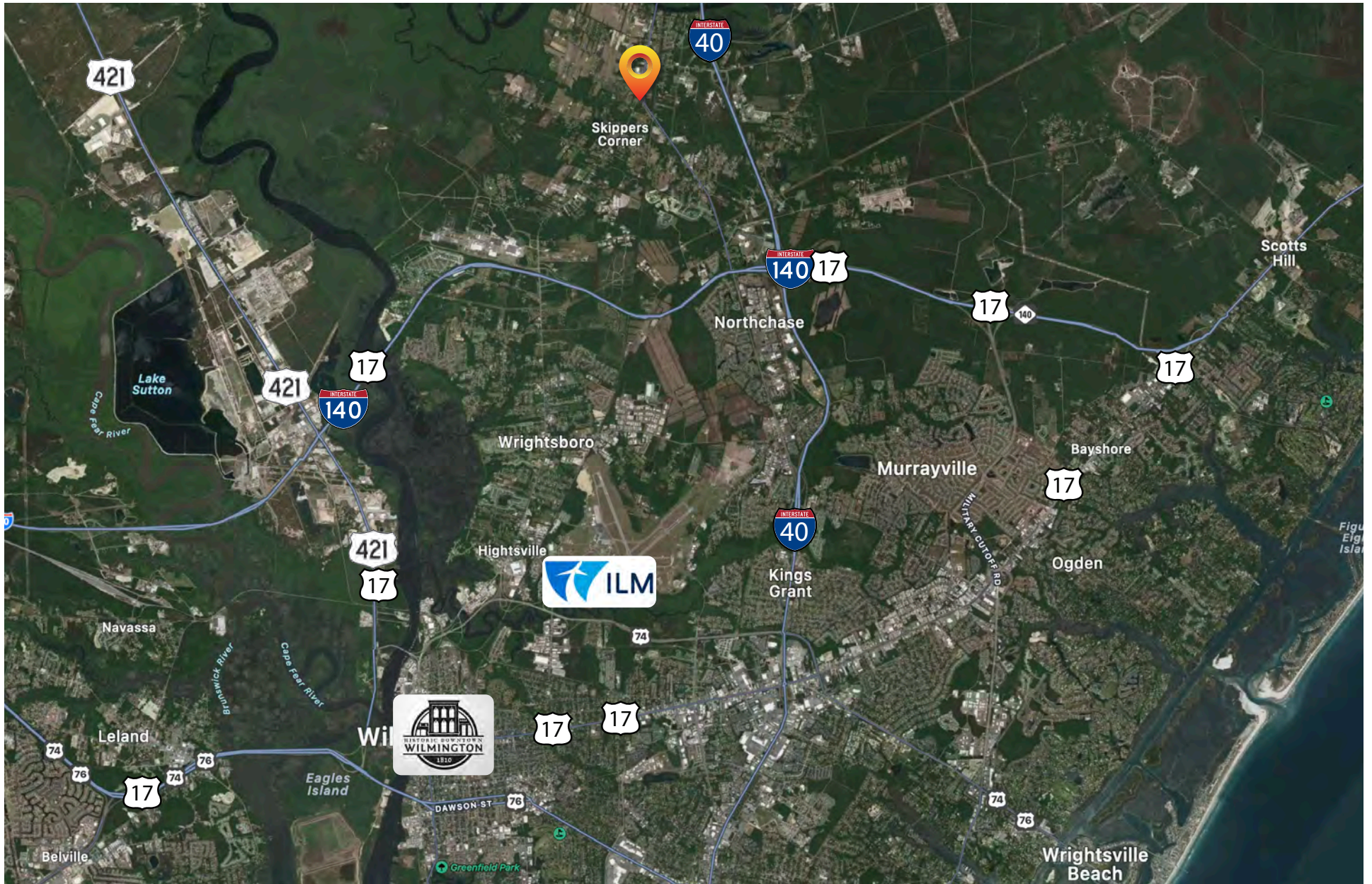
5301, 5307 & 5311 CASTLE HAYNE ROAD | CASTLE HAYNE, NC

FOR SALE

CODY CRESS, SIOR
 910 409 8421
cody.cress@scpcommercial.com

TYLER PEGG
 910 512 3550
tyler.pegg@scpcommercial.com





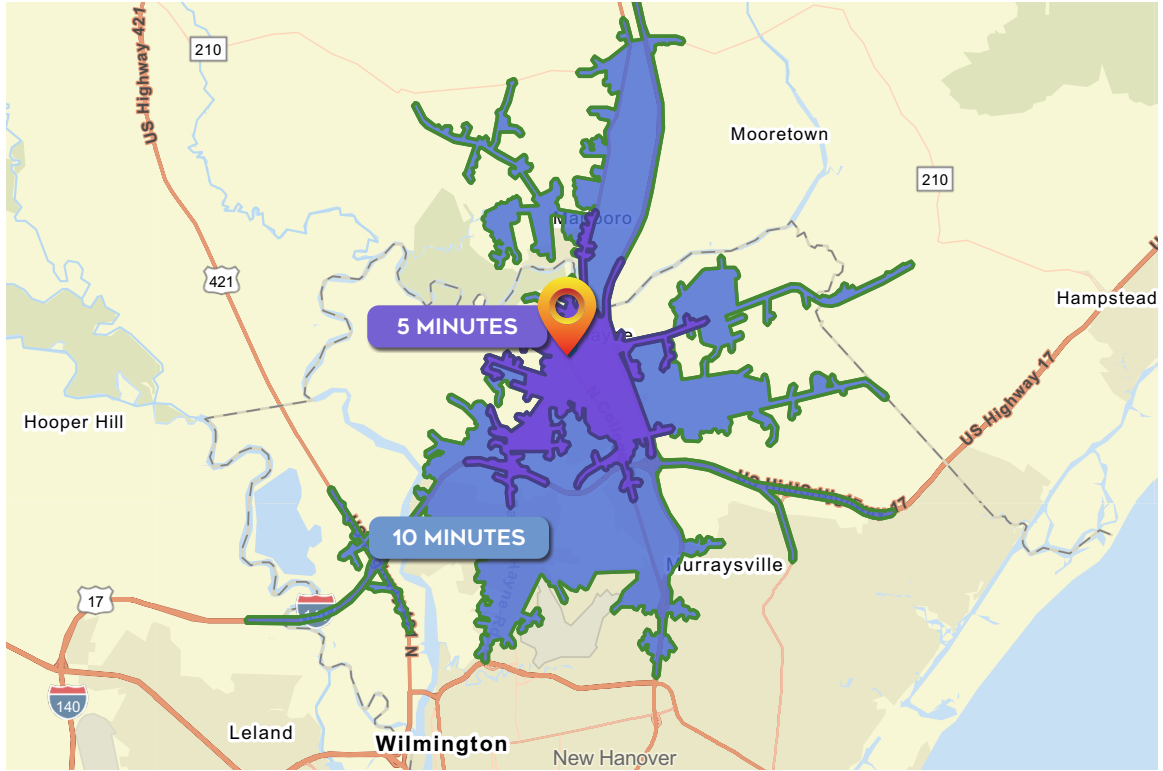
5301, 5307 & 5311 CASTLE HAYNE ROAD | CASTLE HAYNE, NC

FOR SALE

CODY CRESS, SIOR
910 409 8421
cody.cress@scpcommercial.com

TYLER PEGG
910 512 3550
tyler.pegg@scpcommercial.com





| DEMOGRAPHICS | 5 MINUTES | 10 MINUTES |
|-------------------|-----------|------------|
| Total Population | 3,023 | 19,657 |
| Average Age | 43.4 | 41.7 |
| Households | 1,293 | 8,052 |
| Average HH Size | 2.21 | 2.35 |
| Median HH Income | \$75,114 | \$67,875 |
| Average HH Income | \$93,206 | \$83,910 |
| Per Capita Income | \$38,627 | \$35,333 |

Source: Esri forecasts for 2025 and 2030. U.S. Census Bureau 2020 decennial Census data

5301, 5307 & 5311 CASTLE HAYNE ROAD | CASTLE HAYNE, NC

FOR SALE

CODY CRESS, SIOR
 910 409 8421
cody.cress@scpcommercial.com

TYLER PEGG
 910 512 3550
tyler.pegg@scpcommercial.com



TYLER PEGG
910 512 3550
tyler.pegg@scpcommercial.com

CODY CRESS, SIOR
910 409 8421
cody.cress@scpcommercial.com

SUN COAST PARTNERS COMMERCIAL
1430 Commonwealth Drive, Suite 102
Wilmington, NC 28403
910 350 1200 | scpcommercial.com



*The land acreage and/or building square footage was obtained from the County's Geographical Information System or other electronic resources. For exact square footage and/or acreage, we recommend that prior to purchase, a prospective Buyer/Tenant obtain a boundary survey or have the building measured professionally.

5301, 5307 & 5311 CASTLE HAYNE ROAD | CASTLE HAYNE, NC

FOR SALE

