

103
JONESBORO
ROAD
MCDONOUGH,
GA 30253

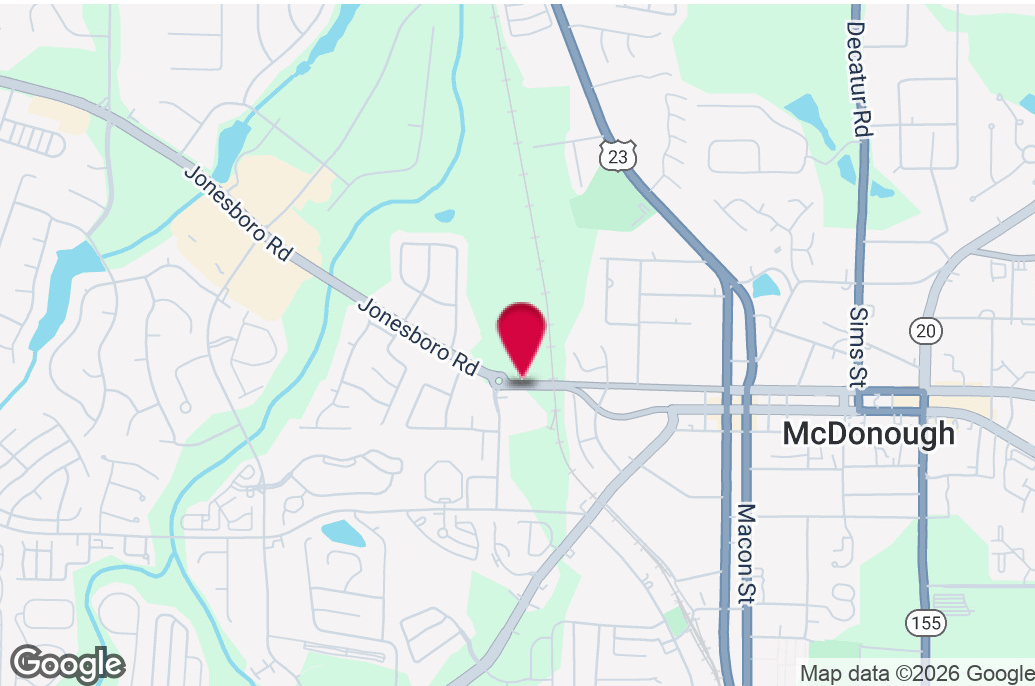
Office Space For Lease

RYAN CLARK
Vice President
404.942.2037
rclark@kingindustrial.com

King Industrial
Realty, Inc.

Industrial • Commercial • Investment
404.942.2000 | kingindustrial.com

FOR LEASE
OFFICE SPACE



PROPERTY HIGHLIGHTS

- **Suite A1 & A2:** 3,000± SF Office Space
- **Suite D:** 642± SF Office Space
- Prime Location
- Maximum Tenant Exposure
- 22,700± Cars Per Day
- Zoned Highway Commercial

OFFERING SUMMARY

Available SF:	642 - 3,000 SF
Building Size:	12,000 SF
Zoning:	C3

RYAN CLARK

Vice President

404.942.2037

rclark@kingindustrial.com

Every effort has been made to provide accurate information, but no liability is assumed for errors or omissions.



Industrial • Commercial • Investment
404.942.2000 | kingindustrial.com

SUITE A1 & A2
3,000± SF



RYAN CLARK

Vice President

404.942.2037

rclark@kingindustrial.com

Every effort has been made to provide accurate information, but no liability is assumed for errors or omissions.

king Industrial Realty, Inc. **CORFAC** INTERNATIONAL

Industrial • Commercial • Investment
404.942.2000 | kingindustrial.com

SUITE D
642± SF



RYAN CLARK

Vice President

404.942.2037

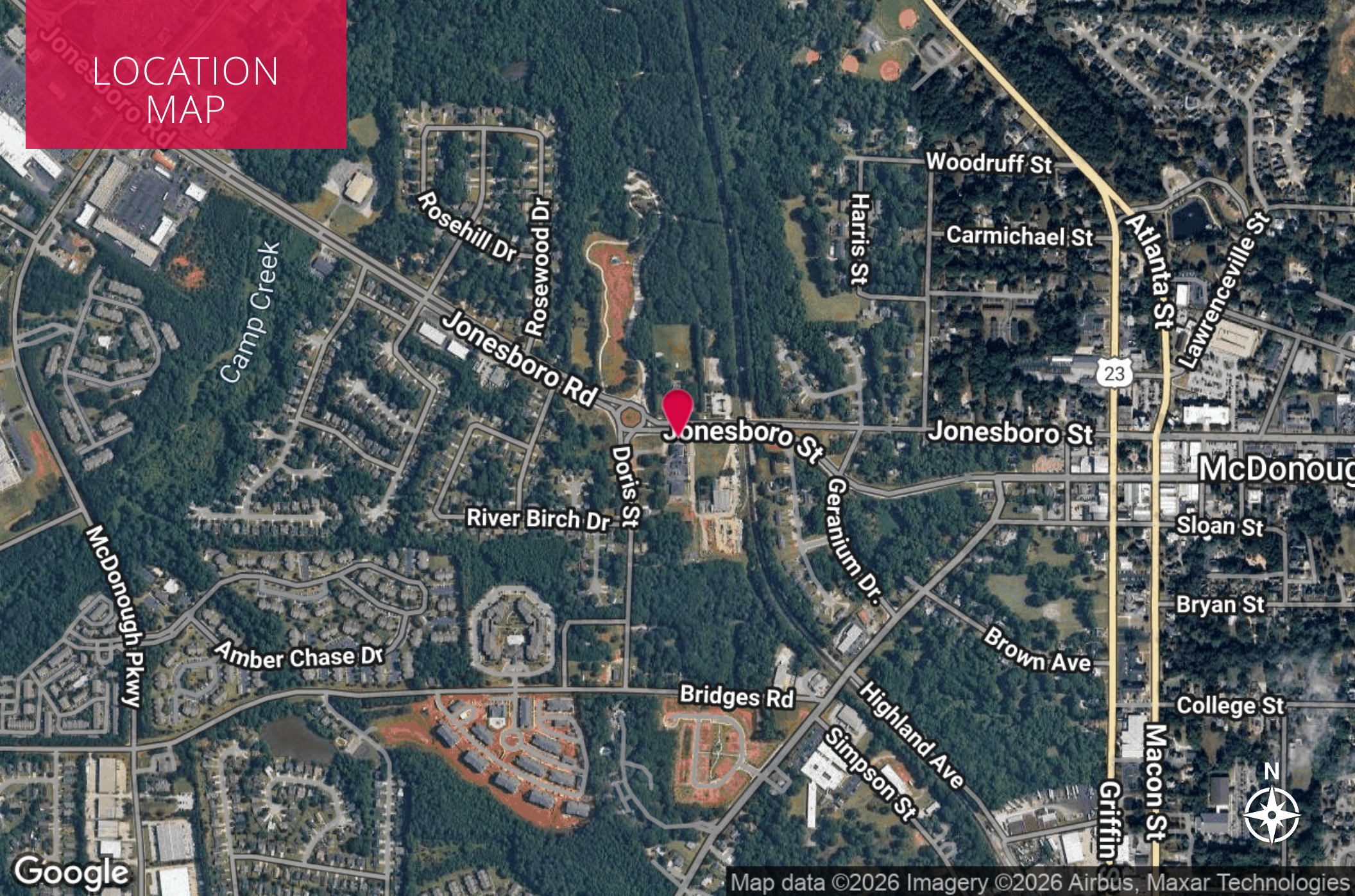
rclark@kingindustrial.com

Every effort has been made to provide accurate information, but no liability is assumed for errors or omissions.



Industrial • Commercial • Investment
404.942.2000 | kingindustrial.com

LOCATION MAP



RYAN CLARK

Vice President

404.942.2037

rclark@kingindustrial.com

Every effort has been made to provide accurate information, but no liability is assumed for errors or omissions.

king Industrial
Realty, Inc.

CORFAC
INTERNATIONAL

Industrial • Commercial • Investment
404.942.2000 | kingindustrial.com



EXCLUSIVELY LISTED BY:

RYAN CLARK

Vice President

rclark@kingindustrial.com

404.942.2037

KING Industrial
Realty, Inc.

Industrial • Commercial • Investment
404.942.2000 | kingindustrial.com