

# FOR LEASE



## PARK NORTH BUSINESS CENTER

1201-1241 N GLENVILLE DR | RICHARDSON, TX 75081



### LISTING HIGHLIGHTS

- |                       |  |
|-----------------------|--|
| <b>ADDRESS:</b>       | 1201-1241 N Glenville Dr   |
| <b>BUILDING SIZE:</b> | +/- 36,885 SF  |
| <b>AVAILABLE SF:</b>  | 5,277 SF   |
| <b>YEAR BUILT:</b>    | 1980   |
| <b>CLEAR HEIGHT:</b>  | 14'  |
| <b>PARKING:</b>       | 125 Concrete parking spaces  |
| <b>NOTES:</b>         | <ul style="list-style-type: none"><li>• Rear Loading with Grade Level, Semi-Dock, and Dock High Roll Up Doors</li><li>• Two buildings with tilt wall construction</li><li>• 50 - 100% AC</li></ul> |

#### FOR LEASING INFORMATION:

**Jessica Reinhardt**

jreinhardt@lee-associates.com

972.934.4005

972.891.5236

**Susan Cancemi**

scancemi@lee-associates.com

972.934.4005

469.236.3386

#### OWNED BY:



#### LEASED BY:



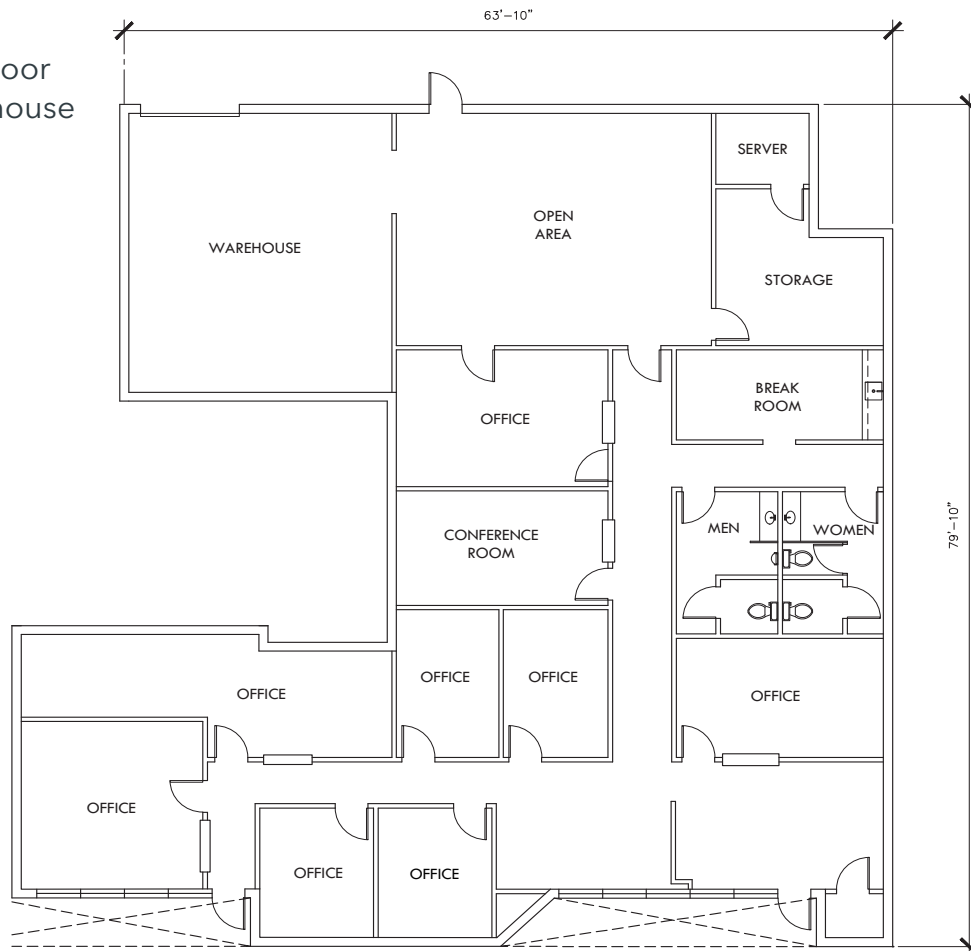
# 1231 N GLENVILLE DR

# FOR LEASE

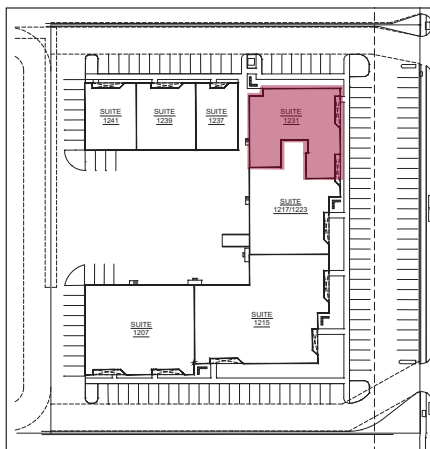
## STE 1231

5,277 SF

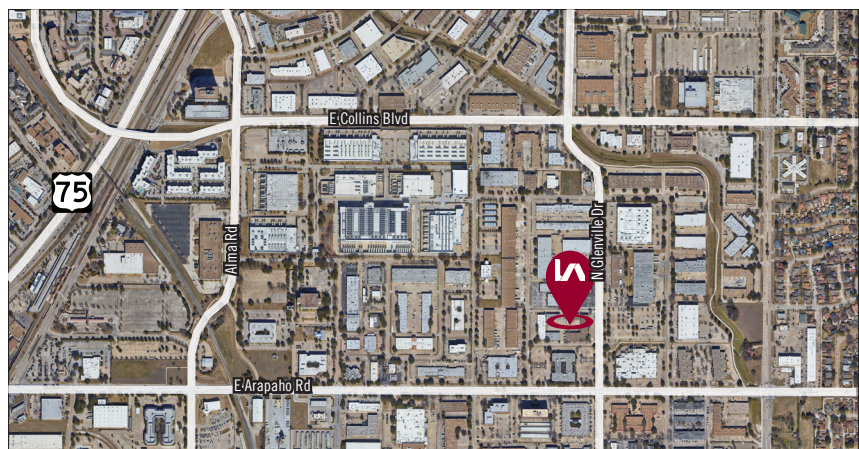
- 1 Grade level door
- No AC in warehouse



SITE PLAN



AERIAL



All information furnished regarding property for sale, rental or financing is from sources deemed reliable, but no warranty or representation is made to the accuracy thereof and same is submitted to errors, omissions, change of price, rental or other conditions prior to sale, lease or financing or withdrawal without notice. No liability of any kind is to be imposed on the broker herein.

**Jessica Reinhardt**

jreinhardt@lee-associates.com

972.934.4005

972.891.5236

**Susan Cancemi**

scancami@lee-associates.com

972.934.4005

469.236.3386

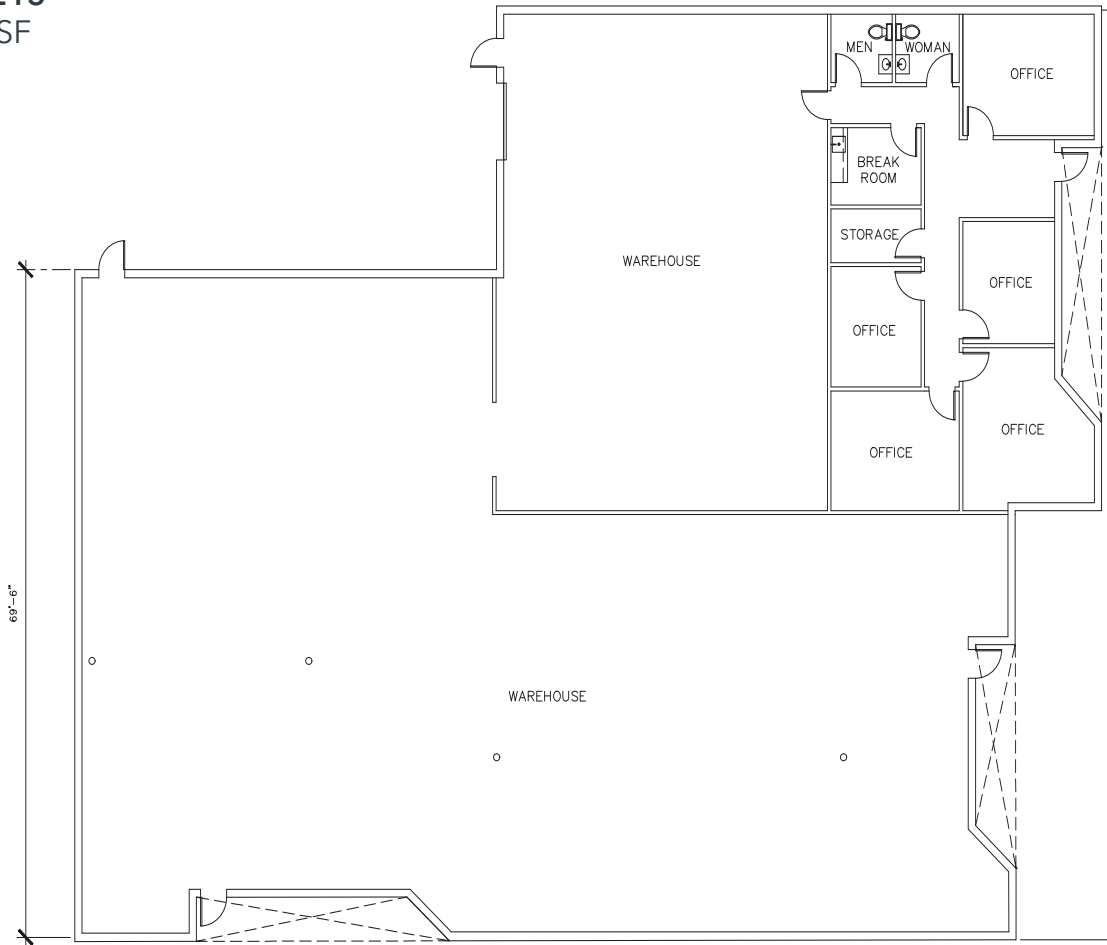
OWNED BY:

**CIP REAL ESTATE**

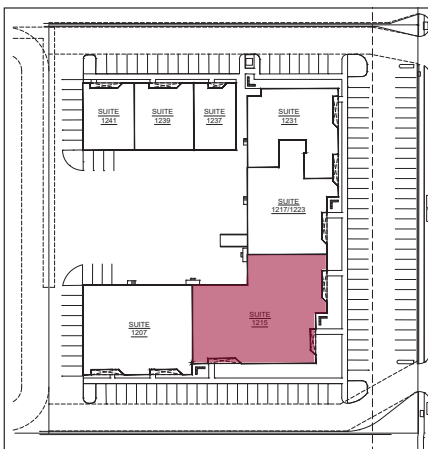
LEASED BY:

**LEE & ASSOCIATES**  
COMMERCIAL REAL ESTATE SERVICES

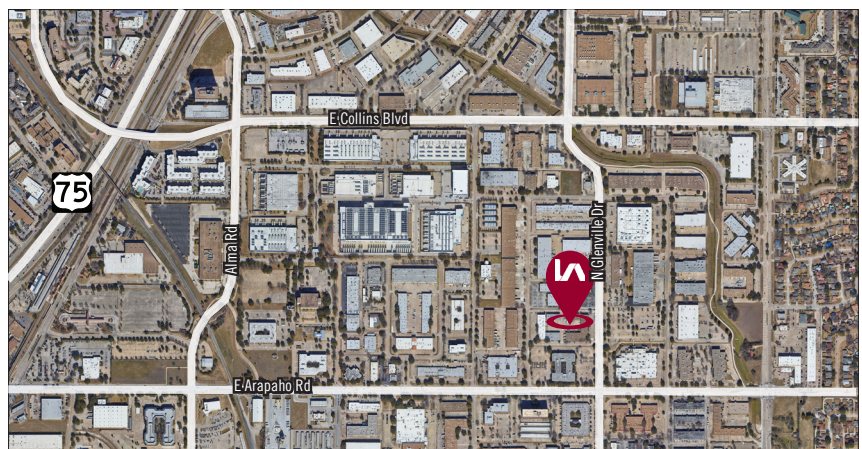
**STE 1215**  
9,703 SF



SITE PLAN



AERIAL



All information furnished regarding property for sale, rental or financing is from sources deemed reliable, but no warranty or representation is made to the accuracy thereof and same is submitted to errors, omissions, change of price, rental or other conditions prior to sale, lease or financing or withdrawal without notice. No liability of any kind is to be imposed on the broker herein.

**Jessica Reinhardt**  
jreinhardt@lee-associates.com  
972.934.4005  
972.891.5236

**Susan Cancemi**  
scancami@lee-associates.com  
972.934.4005  
469.236.3386

OWNED BY:



LEASED BY:

