

ASPEN BUSINESS CENTER



R E B

Contact Information:

Randall E. Blum
Office 480-827-9591
Mobil 602-376-7573

Web Site: REBLTD.Com
for floor plans and
availability.

Listing Service:
Costar.com

FEATURES

- 2873, 2877, 28 N. Nevada Street, Chandler AZ 85225
- 105,751 Sq Ft multi-tenant, industrial warehouse complex, office/warehouse Suites, 5000 Sq Ft up to 15,000 Sq Ft
- Parking: 2.85 spaces to 1,000 Sq Ft
- Freeway Access:
Superstition Freeway 2.5 miles north
101 Freeway 3 miles west
- 200 amp 277/480 volt, upgrades avail.
- 16'-18' clear height, 20' warehouse
- Grade and truckwell loading

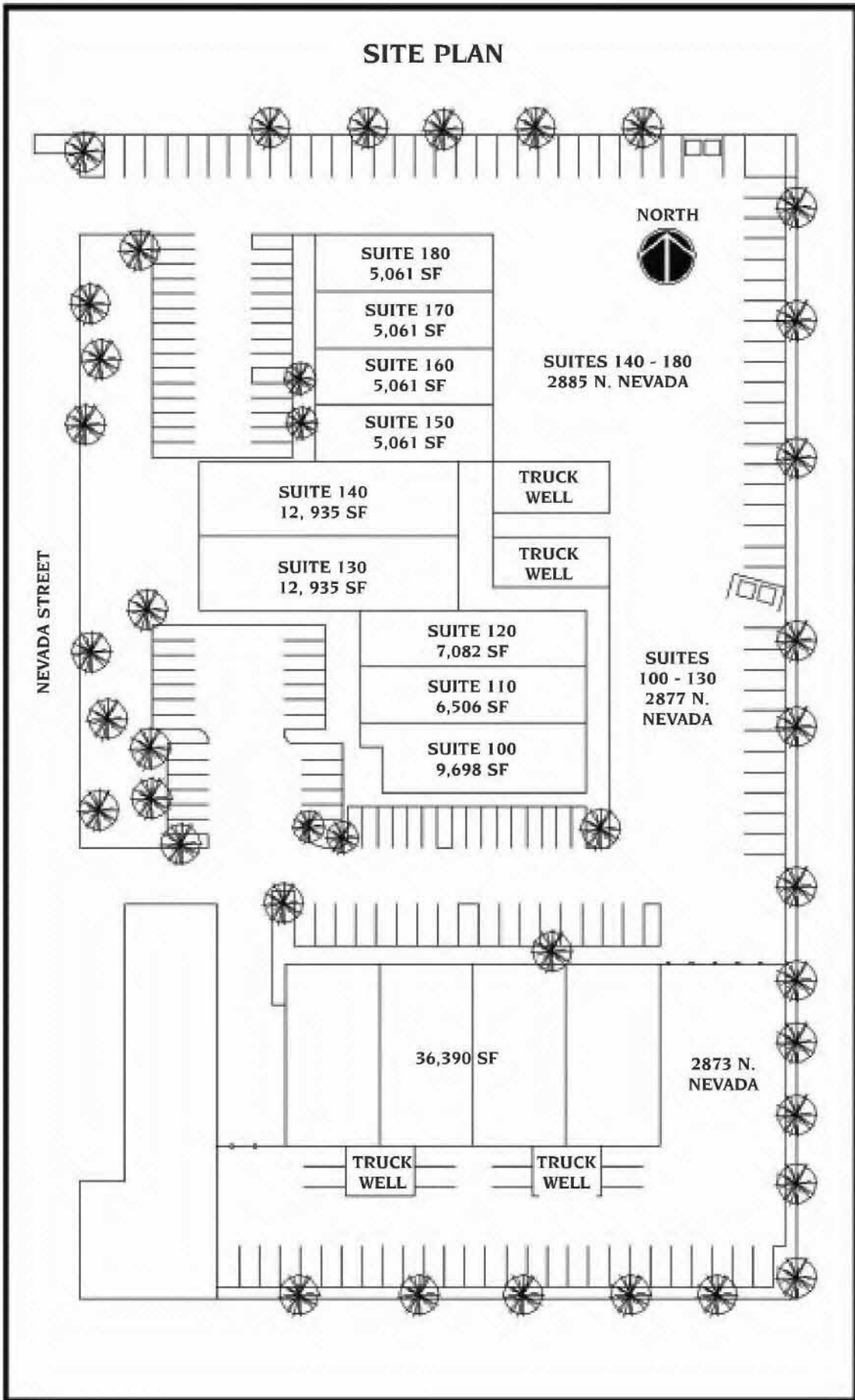
105,751 sq. ft. multi tenant industrial warehouse complex. 2873 N. Nevada consists of a 36,000 square feet, free standing building with private fenced yard. All warehouse spaces have a clear ceiling height of 20' and are adjacent to grade and truck well loading.

LOCATION: Aspen Business Center is located one quarter mile southeast of the intersection of Arizona Avenue and Elliot Roads. Chandler is currently one of the fastest growing high-technology manufacturing cities in the west. It has earned its nickname "The Silicon Desert" by attracting quality employers to its oasis of opportunity. Chandler's pro-business character makes it one of the most desirable cities to live and do business. More than 75% of the 30,000 manufacturing-sector workers are employed in high technology fields; the national average is 15%. More than 64% of Chandler's population is between the age of 18 and 54, with 75% of the adult population possessing some level of college education.

R E B

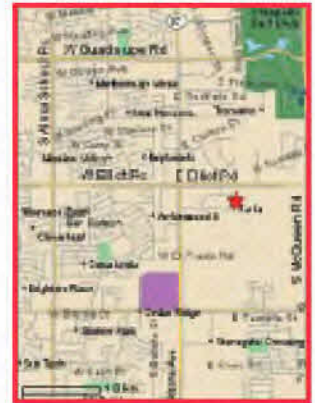
123 N. Centennial Way, Suite 112, Mesa, AZ 85201 Tel 480-827-9591 Fax 480-827-2915

SITE PLAN



ASPEN BUSINESS CENTER

2873, 2877, 28
N. Nevada Street⁸⁵
Chandler AZ 85225



REB

Contact Information:
Randall E. Blum
Office 480-827-9591
Mobil 602-376-7573

Web Site: REBLTD.Com
for floor plans and
availability.

Listing Service:
Costar.com