

PRIME INLINE RETAIL SPACE IN LAYTON

852 W. Hill Field Rd. Layton, UT 84041



Investment Realty
ADVISORS

ALLISON LARSEN

Vice President of Commercial Leasing
385.685.4844
allison@iraut.com

ELLIOT ABEL

Associate Broker
435.485.7070
elliot@iraut.com

Up to 1,240 SF of Retail Space

PROPERTY SUMMARY



PROPERTY DESCRIPTION

Welcome to Layton Crossing, this is a centrally located great retail space on 852 W. Hill Field Rd. in Layton. It's the Perfect Spot, easy to find, and well-priced. Ample Parking and a wide variety of uses permitted.

AVAILABLE UNITS

852 C is a 1,240 SF unit nestled into Layton Crossing. This unit is one of the smallest available units at this plaza. Layton crossing is located just off 1-15 and Hill Field Rd.

OFFERING SUMMARY

Lease Rate:	\$27/SF/YR
CAM Charges:	\$4.70/SF/YR
Lease Type:	NNN
Available Units:	1
Available SF:	1,240
Total Building Size:	63,762 SF
Lot Size:	5.285 Acres
Parking Ratio:	5/1000
Total Parking Stalls:	317
ADA Parking Stalls:	10
AADT:	26,155
Lease Term:	3-10+ Years
Occupancy Date:	Now

ALLISON LARSEN

Vice President of Commercial Leasing
385.685.4844
allison@iraut.com

ELLIOT ABEL

Associate Broker
435.485.7070
elliott@iraut.com

Investment Realty Advisors
411 W 7200 S, Suite 201, Midvale, UT 84047

SITE & AVAILABILITY

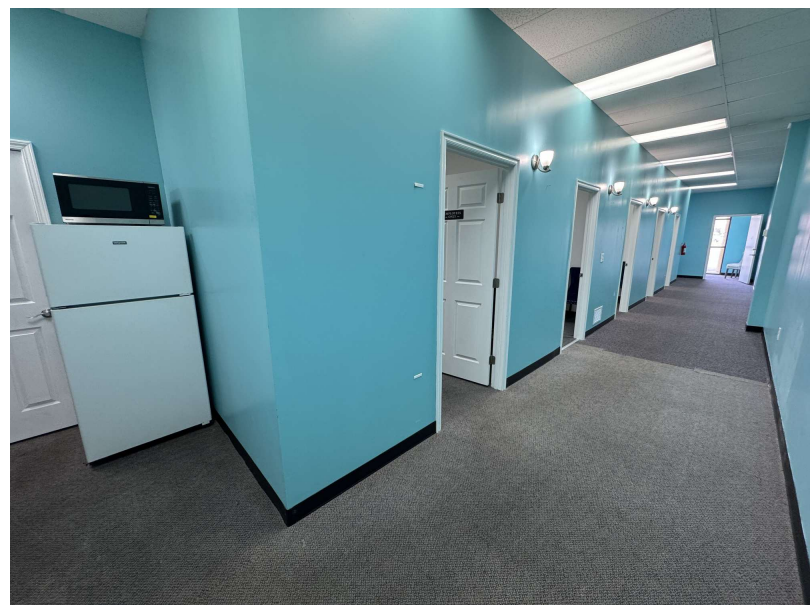
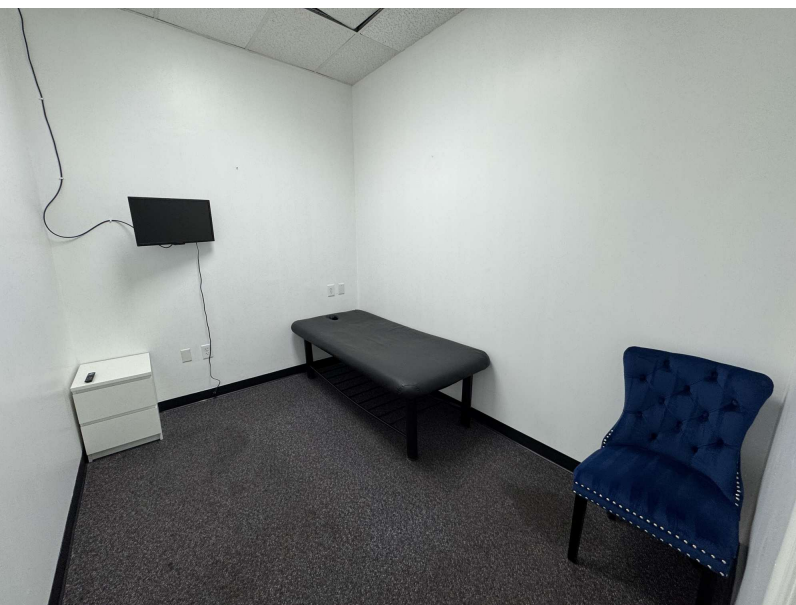
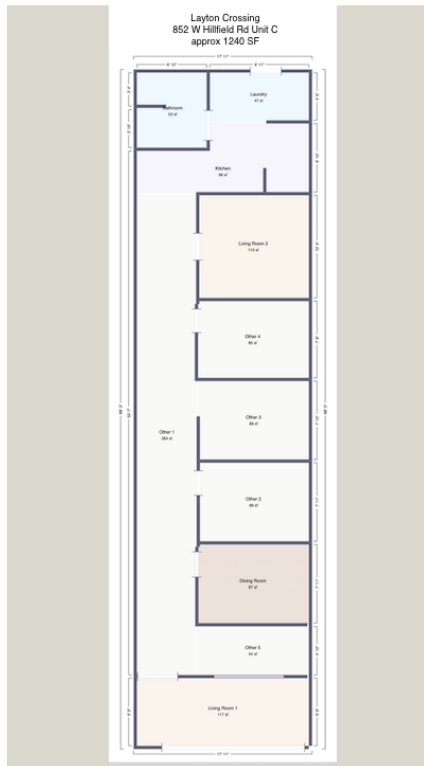


ALLISON LARSEN
Vice President of Commercial Leasing
385.685.4844
allison@iraut.com

ELLIOT ABEL
Associate Broker
435.485.7070
elliott@iraut.com

Investment Realty Advisors
411 W 7200 S, Suite 201, Midvale, UT 84047

SUITE 852C

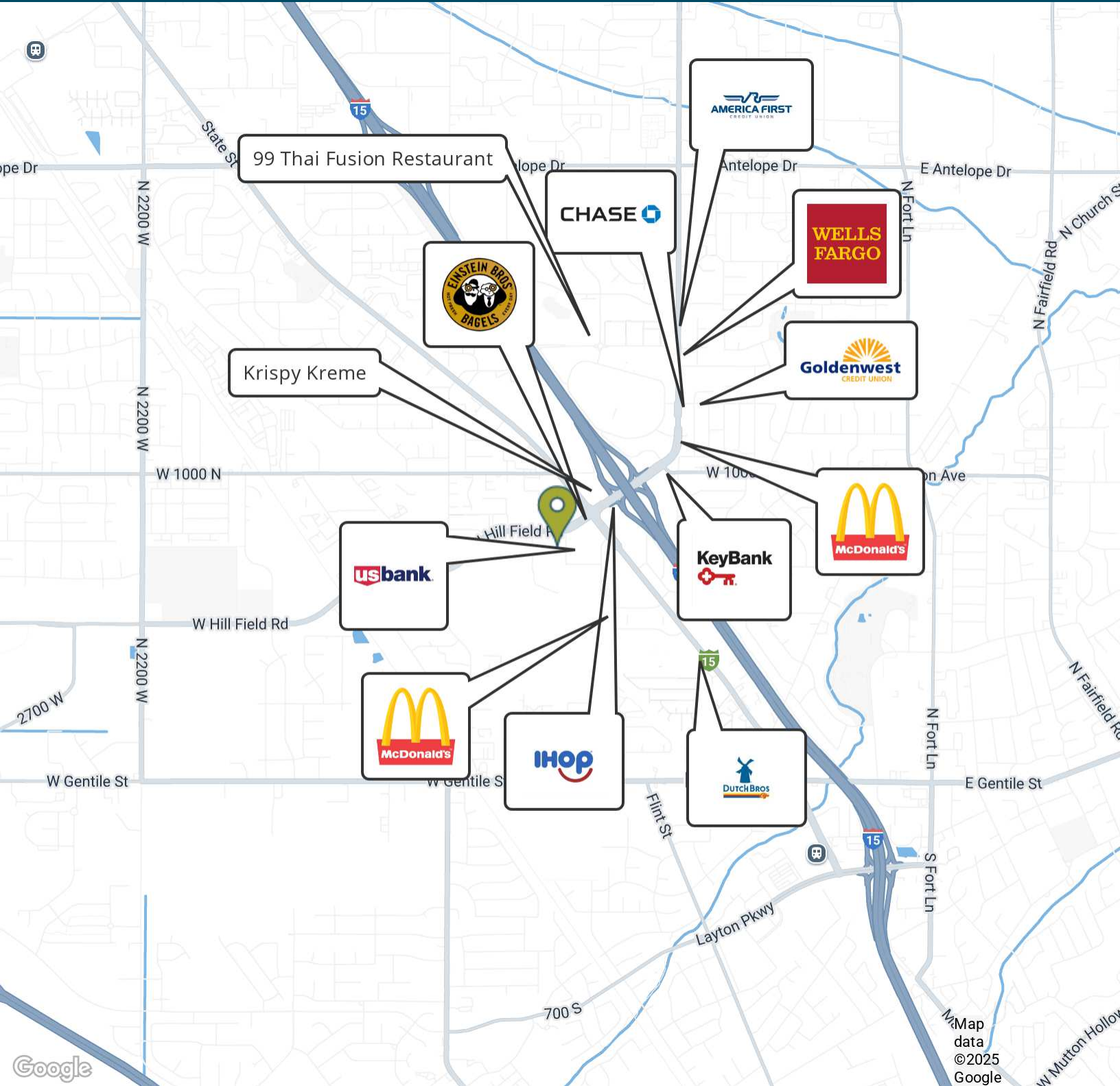


ALLISON LARSEN
Vice President of Commercial Leasing
385.685.4844
allison@iraut.com

ELLIOT ABEL
Associate Broker
435.485.7070
elliott@iraut.com

Investment Realty Advisors
411 W 7200 S, Suite 201, Midvale, UT 84047

LOCATION MAP



ALLISON LARSEN
Vice President of Commercial Leasing
385.685.4844
allison@iraut.com

ELLIOT ABEL
Associate Broker
435.485.7070
elliott@iraut.com

Investment Realty Advisors
411 W 7200 S, Suite 201, Midvale, UT 84047