

# 530

W NORTH FRONTAGE RD  
BOLINGBROOK, IL

## 86,617 SF

Available for Sublease



CUSHMAN &  
WAKEFIELD



# // SUBLEASE SPECS

## TOTAL BUILDING SIZE

185,745 SF

## AVAILABLE SPACE

86,617 SF

## CLEAR HEIGHT

30'

## LOADING DOCKS

10 EXTERIOR

## DRIVE-IN DOOR

1 (12' X 14')

## OFFICE

MAIN: 9,652 SF  
SHIPPING: 525 SF

## TRAILER STALLS

8

## COLUMN SPACING

40' X 50' - TYPICAL  
60' - SPEED BAYS

## YEAR BUILT

2004

## POWER

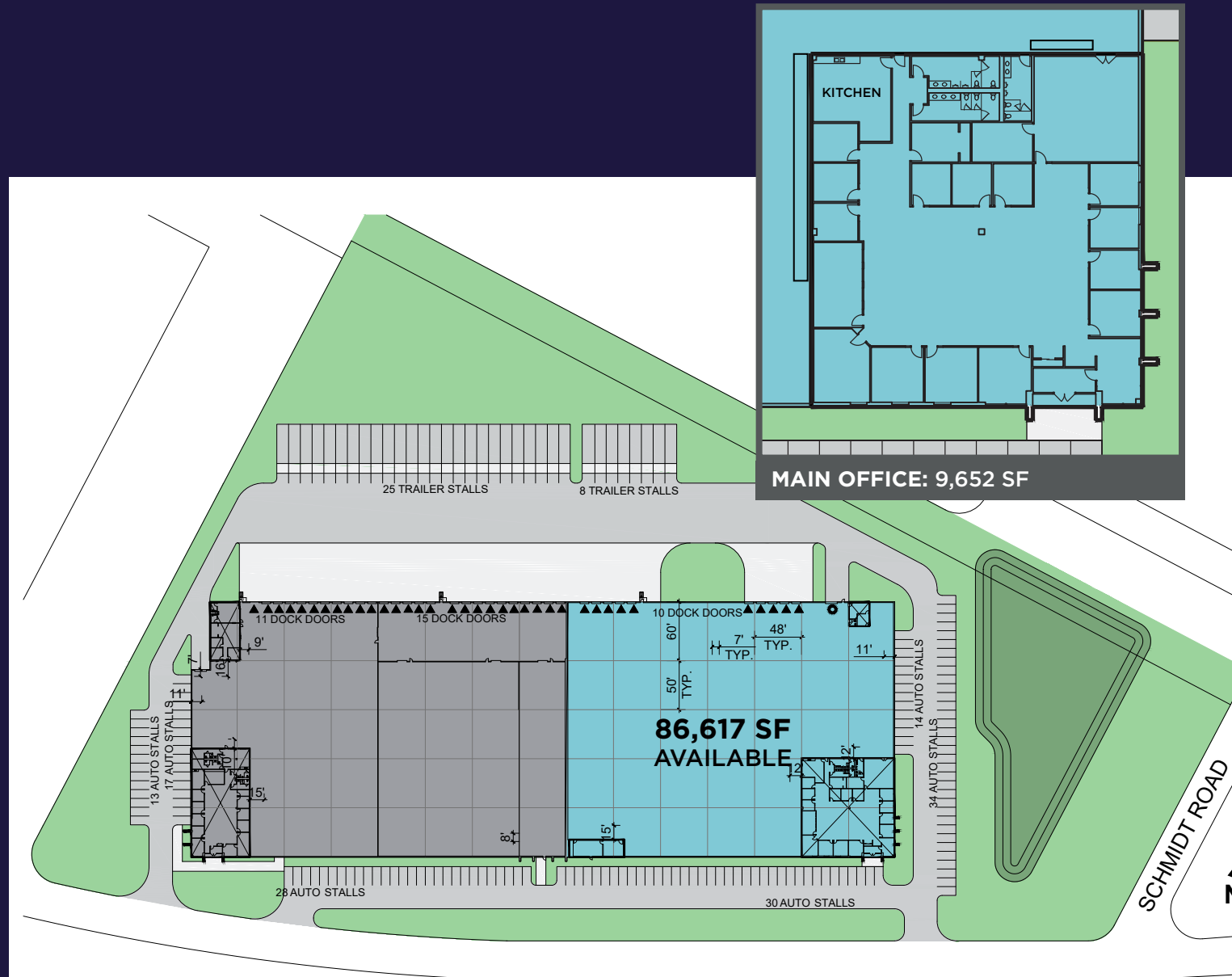
800 AMPS / 277-480V

## SPRINKLERS

ESFR

## SUBLEASE EXPIRATION

1/31/2032



**530 W NORTH FRONTAGE RD**  
Bolingbrook • 86,617 SF Sublease

# // PHOTOS

Racking and Furniture May Be Available for Purchase Through Tenant



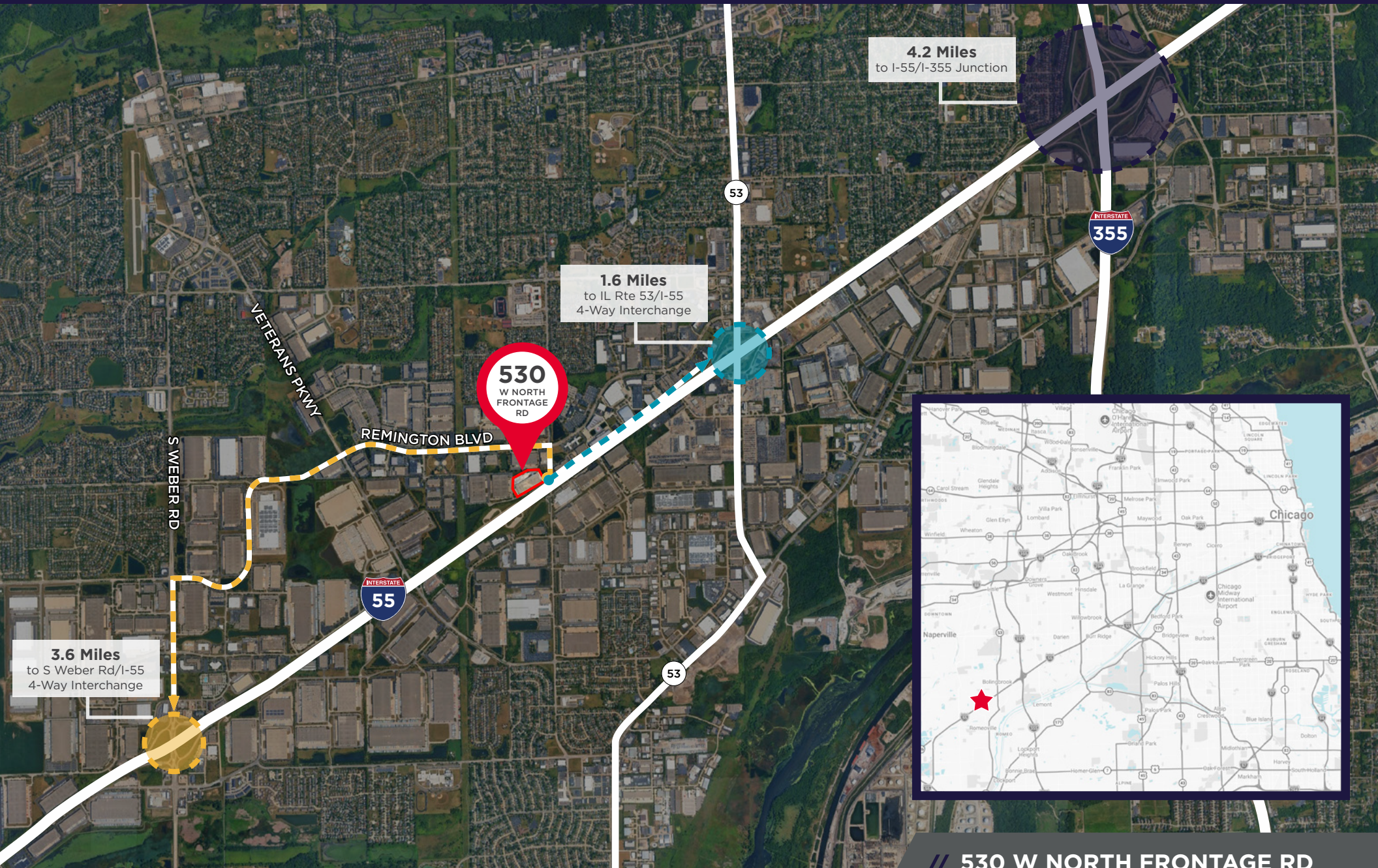
# // AERIAL

I-55 Frontage; Exposure to Over 140,000 Vehicles Per Day



# // ACCESS

Prime Location with Access to I-55 / I-355



// **530 W NORTH FRONTAGE RD**  
Bolingbrook • 86,617 SF Sublease

# 530

W NORTH FRONTAGE RD  
BOLINGBROOK, IL

## CONTACT

### MICHAEL MAGLIANO

Executive Managing Director

+1 847 518 3259

michael.magliano@cushwake.com

### RYAN KLINK

Managing Director

+1 847 518 3211

ryan.klink@cushwake.com

# 86,617 SF

Available for Sublease

©2026 Cushman & Wakefield. All rights reserved. The information contained in this communication is strictly confidential. This information has been obtained from sources believed to be reliable but has not been verified. NO WARRANTY OR REPRESENTATION, EXPRESS OR IMPLIED, IS MADE AS TO THE CONDITION OF THE PROPERTY (OR PROPERTIES) REFERENCED HEREIN OR AS TO THE ACCURACY OR COMPLETENESS OF THE INFORMATION CONTAINED HEREIN, AND SAME IS SUBMITTED SUBJECT TO ERRORS, OMISSIONS, CHANGE OF PRICE, RENTAL OR OTHER CONDITIONS, WITHDRAWAL WITHOUT NOTICE, AND TO ANY SPECIAL LISTING CONDITIONS IMPOSED BY THE PROPERTY OWNER(S). ANY PROJECTIONS, OPINIONS OR ESTIMATES ARE SUBJECT TO UNCERTAINTY AND DO NOT SIGNIFY CURRENT OR FUTURE PROPERTY PERFORMANCE.

