



RETAIL/OFFICE SPACE FOR LEASE

534-618 E. 99th Street, Kansas City, Missouri



LEASE RATE: \$24/SF GROSS | 800 SF SPACE

DEMOGRAPHICS

	1 mile	3 miles	5 miles
Estimated Population	8,789	63,165	193,153
Avg. Household Income	\$89,792	\$119,581	\$129,927

- Multi tenant strip center at Holmes Road & 99th Street
- 800 SF in-line space available at \$24/SF gross
- Easy access to I-435



CLICK HERE TO VIEW MORE LISTING INFORMATION

For More Information Contact:

GARRETT COHOON | 816.412.7315 | gcohoon@blockandco.com

Exclusive Agent

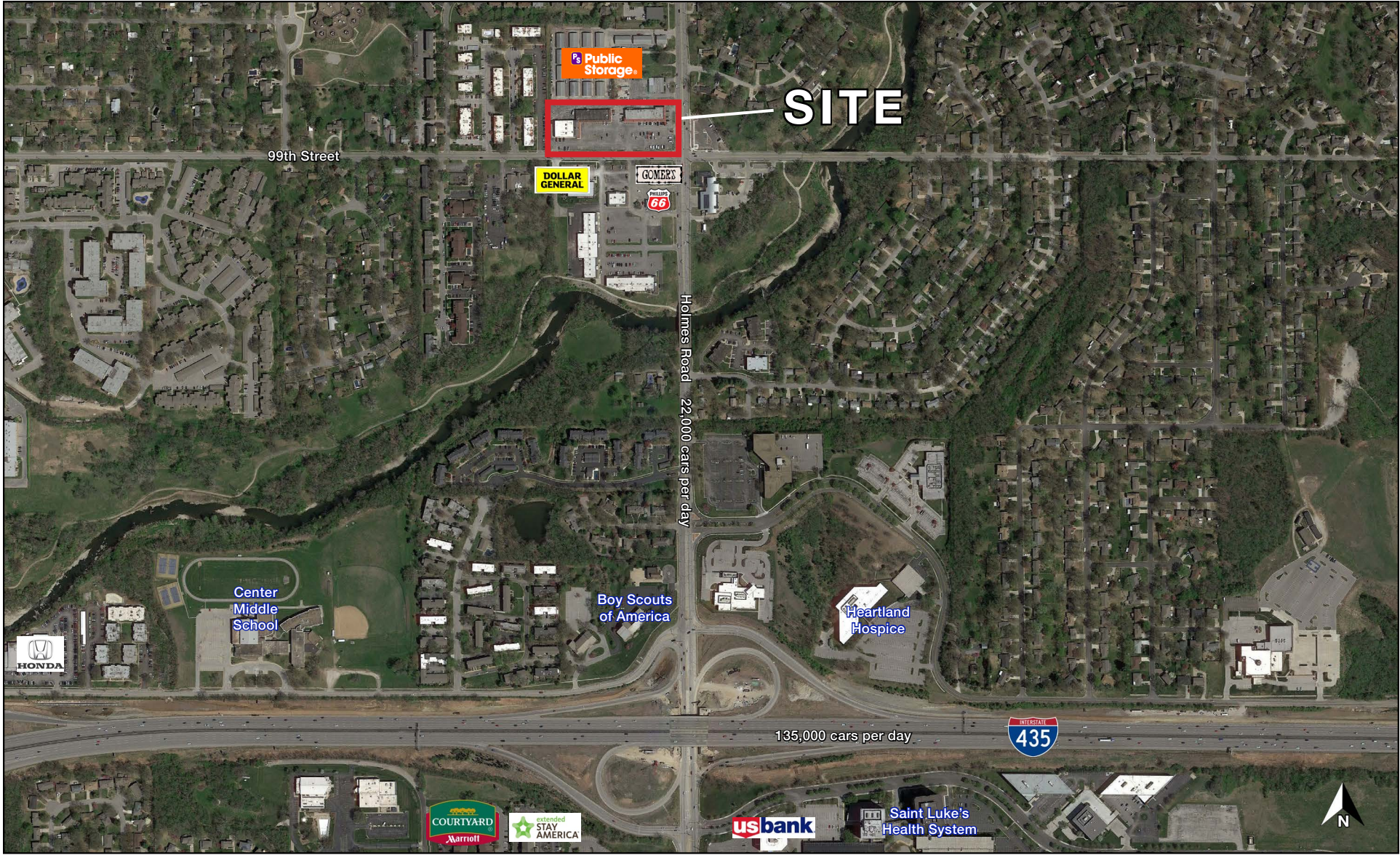




RETAIL/OFFICE SPACE FOR LEASE

534-618 E. 99th Street, Kansas City, Missouri

AERIAL



SURVEY

TOPOGRAPHIC SURVEY

DESCRIPTION: Lot 1, HOLMESWOOD SHOPPING CENTER, a subdivision in Kansas City, Jackson County, Missouri.

(See Data Sheet No. 2006701149)

Containing 142,560 square feet, or 3.272 acres, more or less.

Readings are based on the HOLMESWOOD SHOPPING CENTER subdivision plat filed in Plat Book 37 of Page 32.

Building dimensions and dimensions to buildings are plus or minus 0.2 feet. All improvements are based on what was visible on the day the field survey was performed.

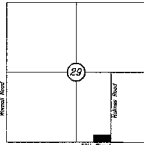
Block/Block-M-121 Monument Elev=807.08 (MND 05)

Adjust to Kansas City, MO Datum = 722.21

Adjust to Kansas City, MO Datum = 84.51 (M.C. MO datum)

LEGEND

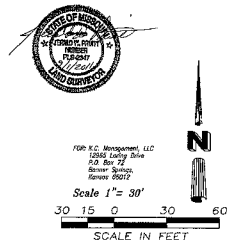
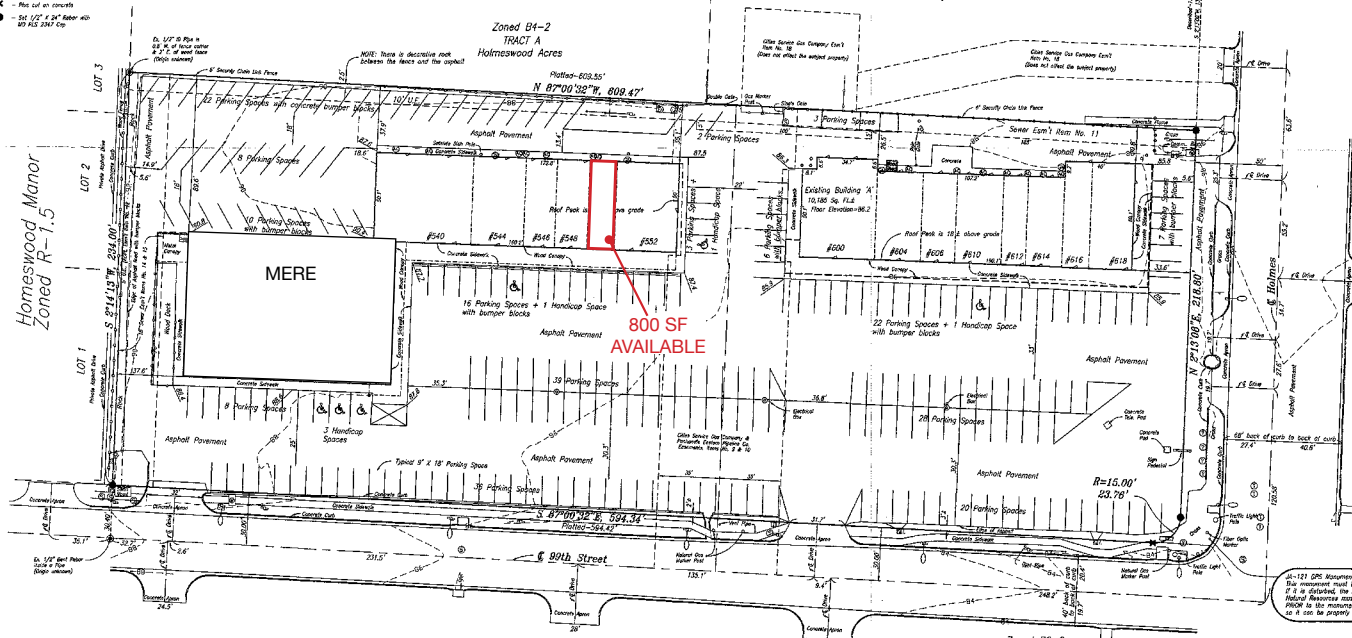
- Light Pole with cross base
- Sign
- Street Light
- Guard Post
- Water Meter
- Gas Meter
- Utility Pole
- Day Anchor
- Gate Post
- Telephone Box
- Storm Manhole
- Storm Sewer (Strategic) Manhole
- Telephone Manhole
- Unknown Manhole
- Air Conditioner Area
- Pole of an eave
- 1/2" or 3/4" nail (1/2" or 3/4" Cap)



LOCATION MAP
Scale 1" = 200'

NOTES

1. The subject property is zoned R2-2, according to City zoning maps. The property contains 142,560 square feet, or 3.272 acres, more or less, based on an existing or proposed street right-of-way within the subject property.
2. Gross Foot Print=10,183 square feet, more or less.
3. Gross Foot Print=10,183 square feet, more or less.
4. Gross Foot Print=9,544 square feet, more or less.
5. Gross Foot Print=8,093 square feet, more or less.
6. Gross Foot Print=6,893 square feet, more or less.
7. Gross Foot Print=5,594 square feet, more or less.
8. Gross Foot Print=4,294 square feet, more or less.
9. Gross Foot Print=3,094 square feet, more or less.
10. Gross Foot Print=1,894 square feet, more or less.
11. Gross Foot Print=683 square feet, more or less.
12. Gross Foot Print=563 square feet, more or less.
13. Gross Foot Print=443 square feet, more or less.
14. Gross Foot Print=323 square feet, more or less.
15. Gross Foot Print=203 square feet, more or less.
16. Gross Foot Print=83 square feet, more or less.
17. Gross Foot Print=63 square feet, more or less.
18. Gross Foot Print=43 square feet, more or less.
19. Gross Foot Print=23 square feet, more or less.
20. Gross Foot Print=3 square feet, more or less.

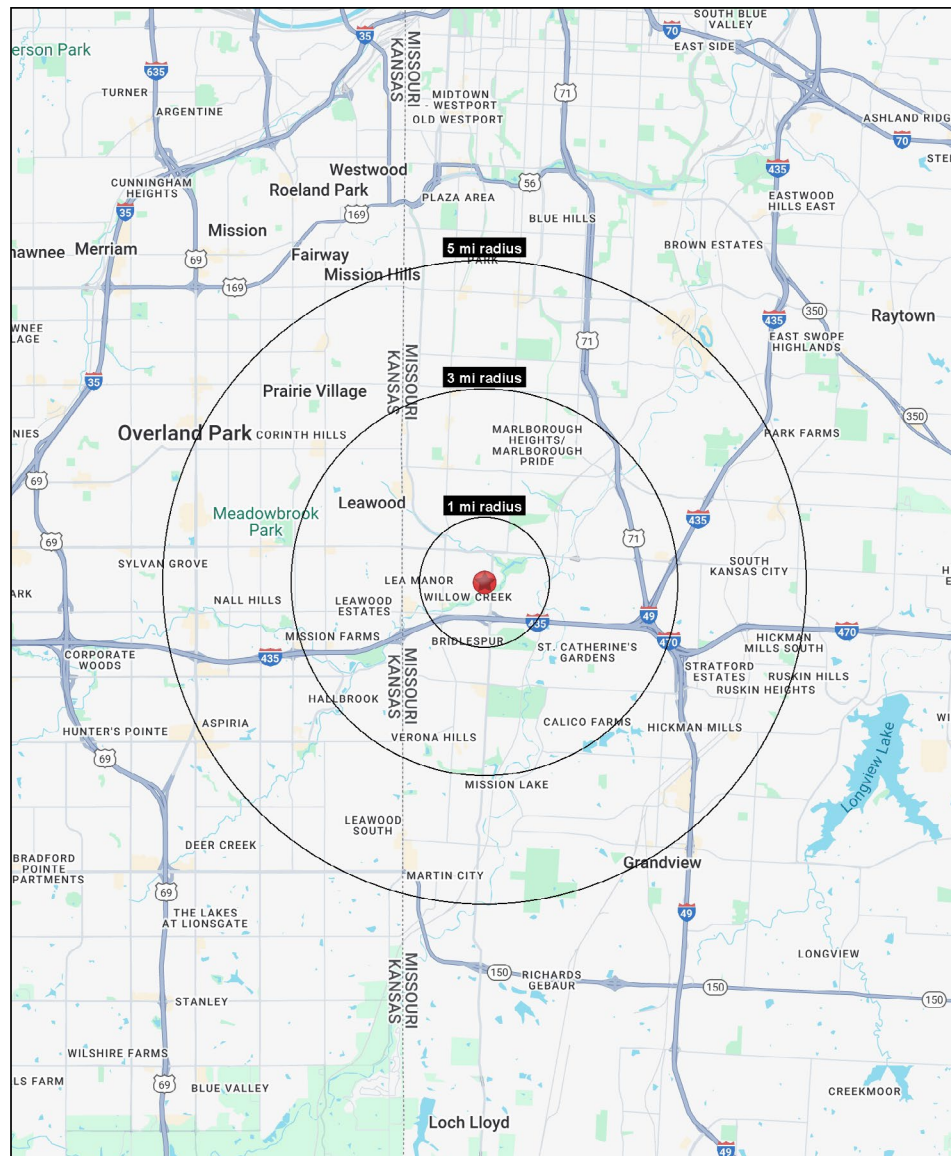
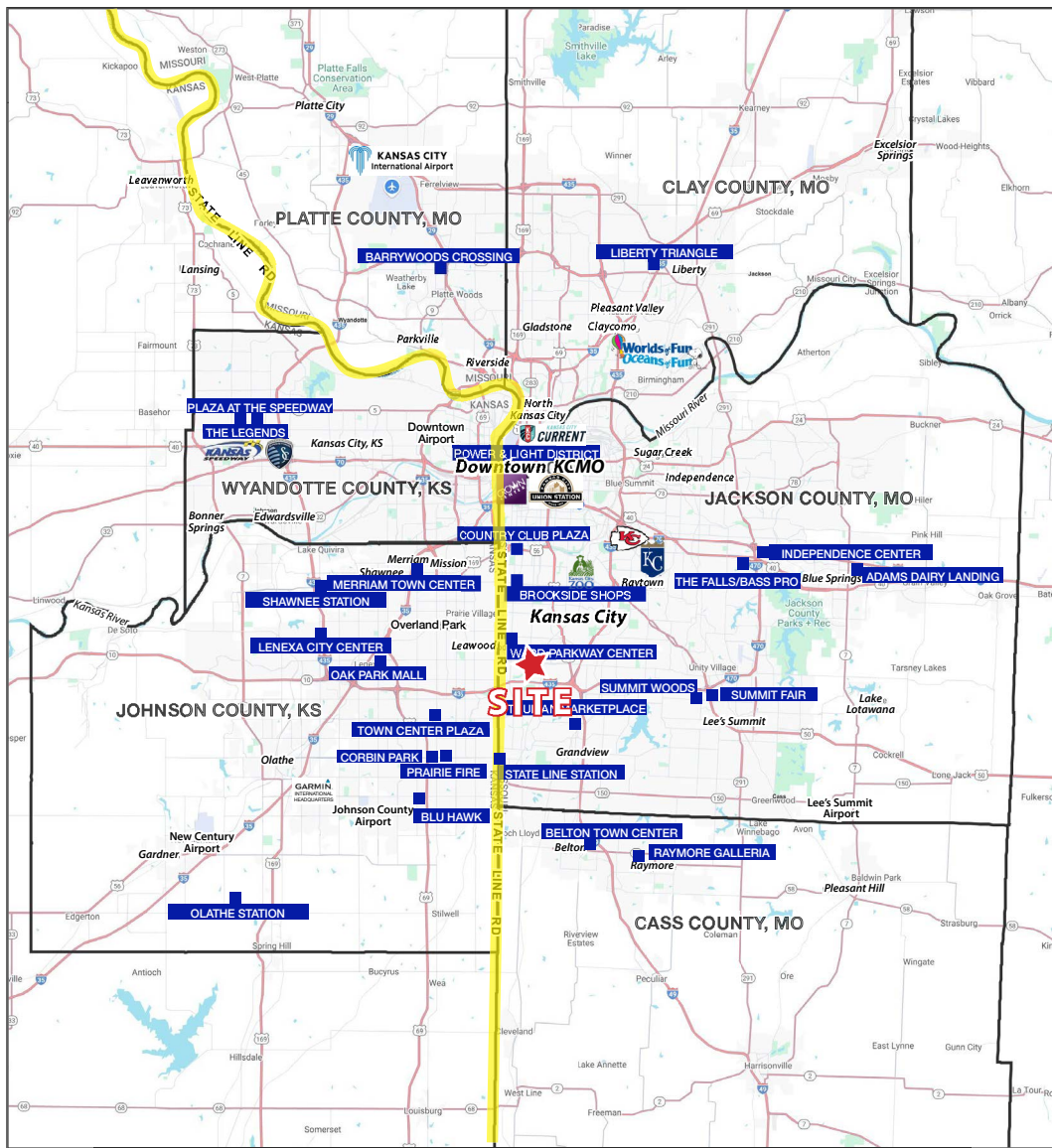


TOPOGRAPHIC SURVEY
LOT 1, HOLMESWOOD SHOPPING CE.
 Kansas City, Jackson County, Missouri.
PRUITT and DOOLEY SURVEYING, I
 2812 Elm Ave. 10777 Berkeley, Mo.
 Raytown, MO 64138 Overland Park, KS 66204
 816-539-4239 316-539-3002



RETAIL/OFFICE SPACE FOR LEASE

534-618 E. 99th Street, Kansas City, Missouri





RETAIL/OFFICE SPACE FOR LEASE

534-618 E. 99th Street, Kansas City, Missouri

534-618 E. 99th Street Kansas City, MO 64131	1 mi radius	3 mi radius	5 mi radius
Population			
2025 Estimated Population	8,789	63,165	193,153
2030 Projected Population	8,729	62,464	191,952
2020 Census Population	8,319	63,533	191,421
2010 Census Population	8,150	61,681	184,435
Projected Annual Growth 2025 to 2030	-0.1%	-0.2%	-0.1%
Historical Annual Growth 2010 to 2025	0.5%	0.2%	0.3%
2025 Median Age	37.5	39.5	40.0
Households			
2025 Estimated Households	4,475	28,939	86,029
2030 Projected Households	4,474	28,892	86,578
2020 Census Households	4,286	28,935	84,279
2010 Census Households	4,148	27,810	80,340
Projected Annual Growth 2025 to 2030	-	-	0.1%
Historical Annual Growth 2010 to 2025	0.5%	0.3%	0.5%
Race and Ethnicity			
2025 Estimated White	54.2%	67.5%	67.3%
2025 Estimated Black or African American	34.6%	22.6%	22.7%
2025 Estimated Asian or Pacific Islander	2.0%	2.3%	2.5%
2025 Estimated American Indian or Native Alaskan	0.5%	0.3%	0.3%
2025 Estimated Other Races	8.7%	7.2%	7.3%
2025 Estimated Hispanic	8.8%	6.6%	7.0%
Income			
2025 Estimated Average Household Income	\$89,792	\$119,581	\$129,927
2025 Estimated Median Household Income	\$68,271	\$94,613	\$98,011
2025 Estimated Per Capita Income	\$45,776	\$54,891	\$58,007
Education (Age 25+)			
2025 Estimated Elementary (Grade Level 0 to 8)	1.5%	2.0%	1.9%
2025 Estimated Some High School (Grade Level 9 to 11)	3.2%	2.7%	2.8%
2025 Estimated High School Graduate	18.4%	16.7%	17.3%
2025 Estimated Some College	26.9%	21.1%	19.3%
2025 Estimated Associates Degree Only	6.3%	5.6%	5.9%
2025 Estimated Bachelors Degree Only	32.2%	32.1%	31.2%
2025 Estimated Graduate Degree	11.5%	19.7%	21.6%
Business			
2025 Estimated Total Businesses	346	2,949	10,249
2025 Estimated Total Employees	2,817	31,162	124,946
2025 Estimated Employee Population per Business	8.1	10.6	12.2
2025 Estimated Residential Population per Business	25.4	21.4	18.8

©2025, Sites USA, Chandler, Arizona, 480-491-1112 Demographic Source: Applied Geographic Solutions 5/2025, TIGER Geography - RS1

