

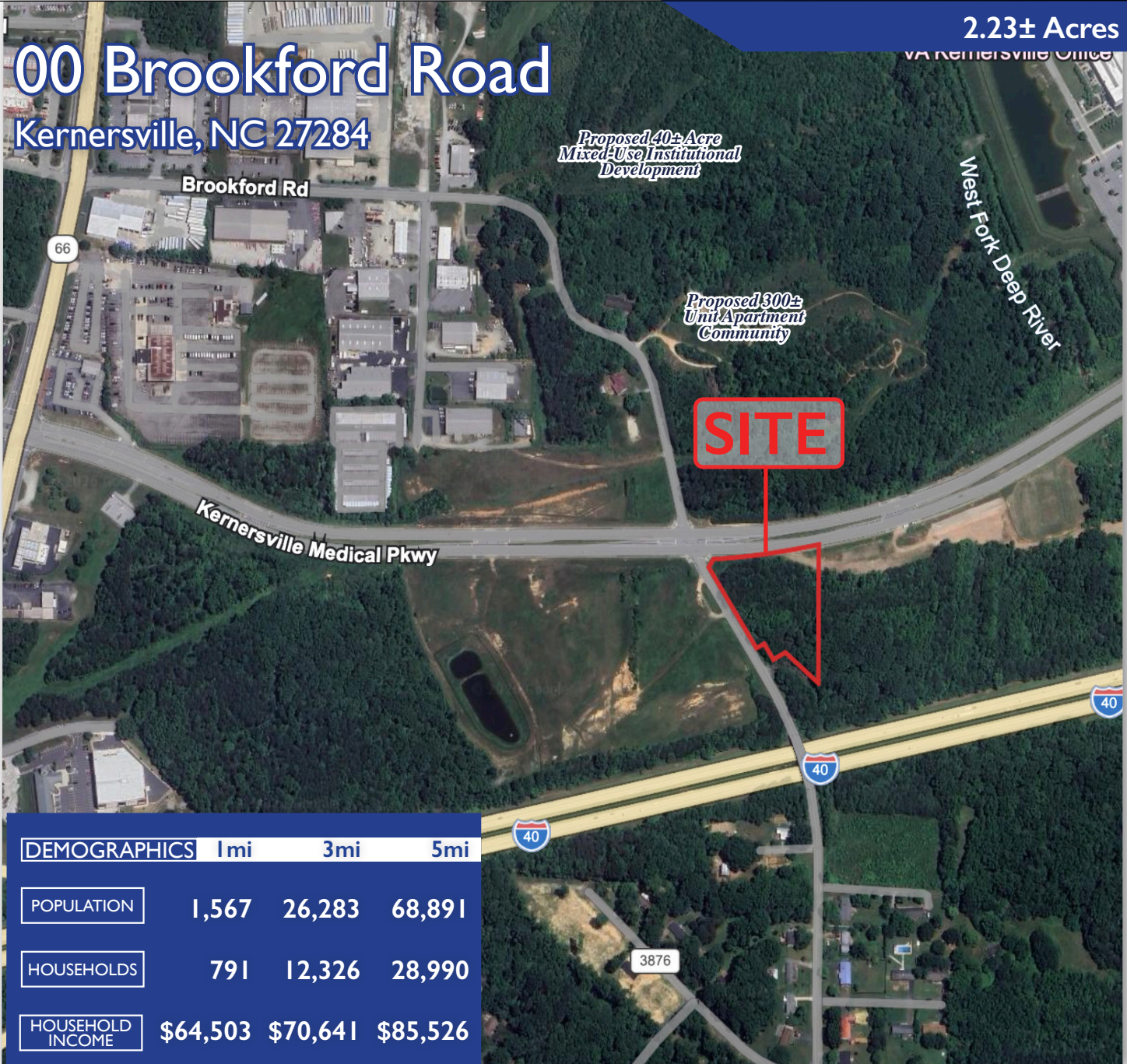


M E R I D I A N

147 S. CHERRY STREET, SUITE 200 | WINSTON-SALEM, NC 27101 | P 336.722.1986 | F 336.723.3173 | MERIDIANREALTY.COM

2.23± Acres

# 00 Brookford Road Kernersville, NC 27284



DEMOGRAPHICS	1mi	3mi	5mi
POPULATION	1,567	26,283	68,891
HOUSEHOLDS	791	12,326	28,990
HOUSEHOLD INCOME	\$64,503	\$70,641	\$85,526

For more information:

**Jesse H. Jarrell, CCIM**

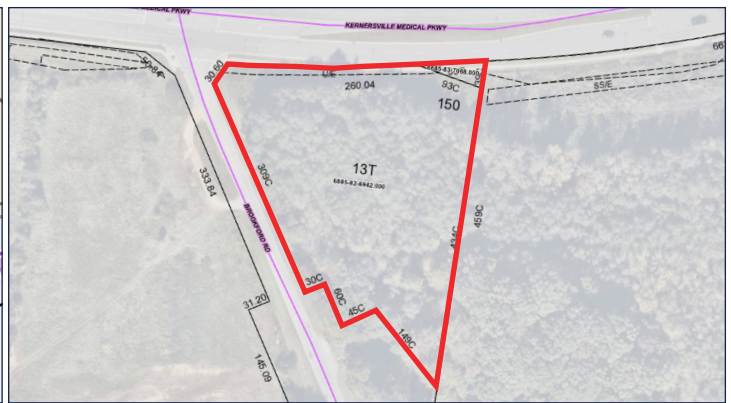
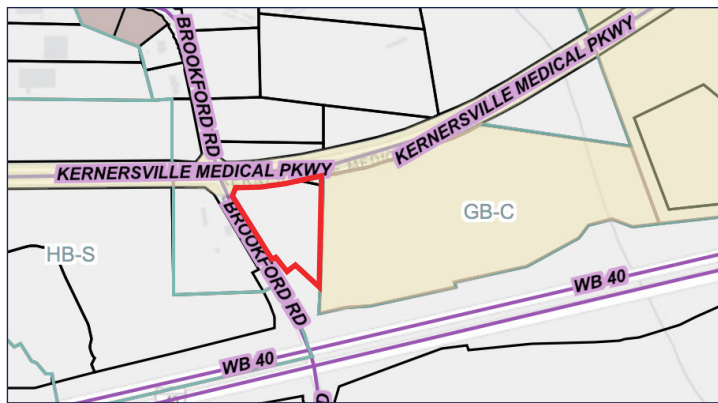
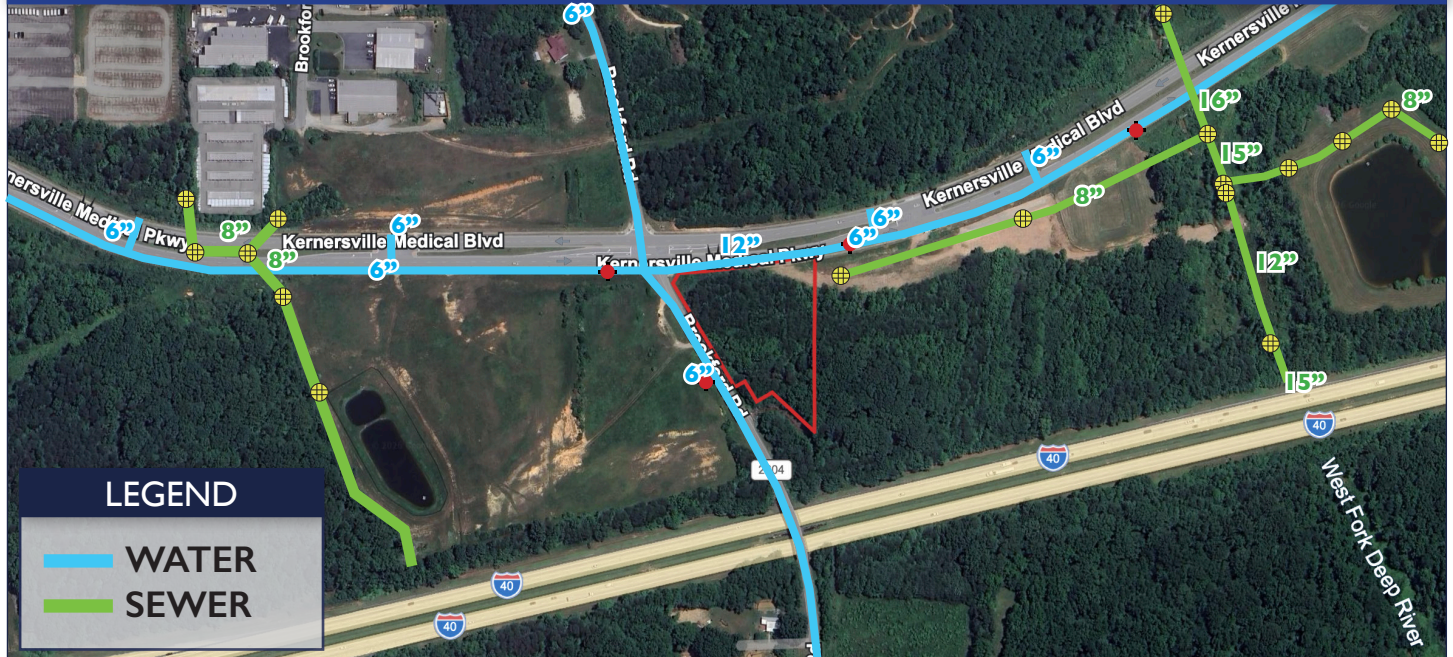
[jjarrell@meridianrealty.com](mailto:jjarrell@meridianrealty.com)

336.480.2324

**FOR SALE: \$575,000.00**

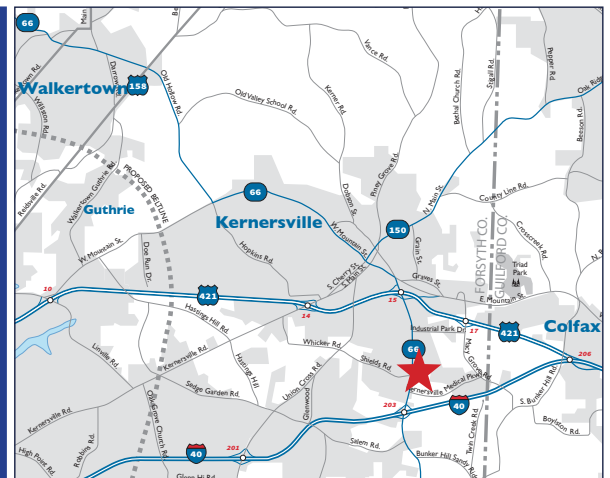
00 Brookford Rd Kernersville, NC 27284

## Utilities



## Property Details

- 752'± Road Frontage
- Adjacent to sites recently purchased by Novant and Crew Development
- Zoned RS-20
- For Sale: \$575,000.00



No warranty or representation (express or implied) is made as to the accuracy or completeness of the information set forth herein. All information is submitted subject to errors, omissions, change of price, prior lease or sale, and withdrawal without notice. All marketing material produced by the Meridian Realty Group is proprietary. Any reproduction is expressly prohibited.



THE MERIDIAN REALTY GROUP | 147 S. CHERRY STREET, SUITE 200 | WINSTON-SALEM, NC 27101

P 336.722.1986 | F 336.723.3173

WWW.MERIDIANREALTY.COM