



FOR LEASE – 21,849 SF Class A Warehouse Space | Dock High & Grade Level
5620 W Linebaugh Ave, Tampa, FL 33624 (Suites A + B)

CLASS A NEW CONSTRUCTION WAREHOUSE – TAMPA AIRPORT

Robbie Lober
Managing Member
727 - 999 - 1806
Robbie@LoberRealEstate.com

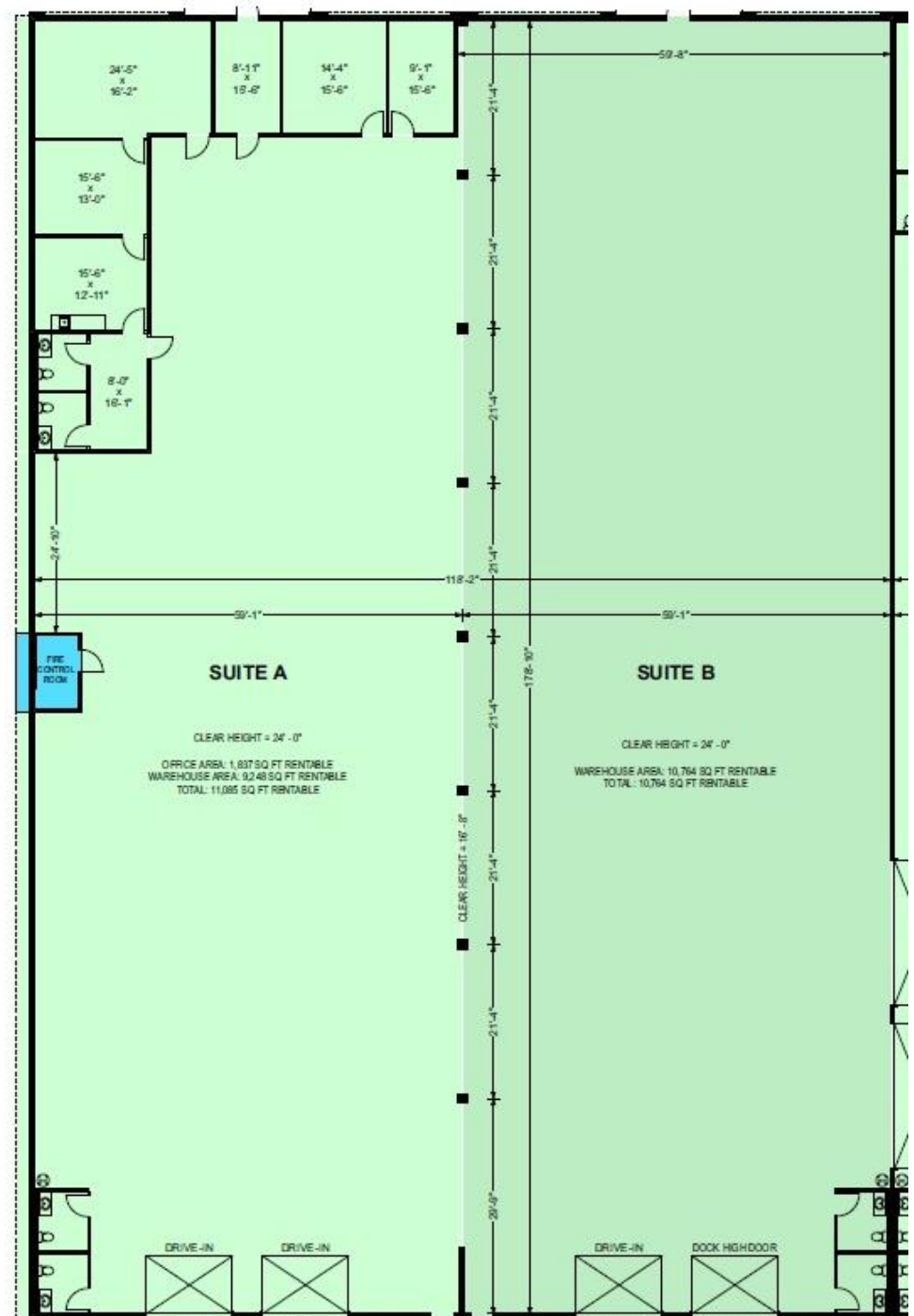
Devin Beeler
Senior Associate
727 – 709 – 2179
Devin@LoberRealEstate.com



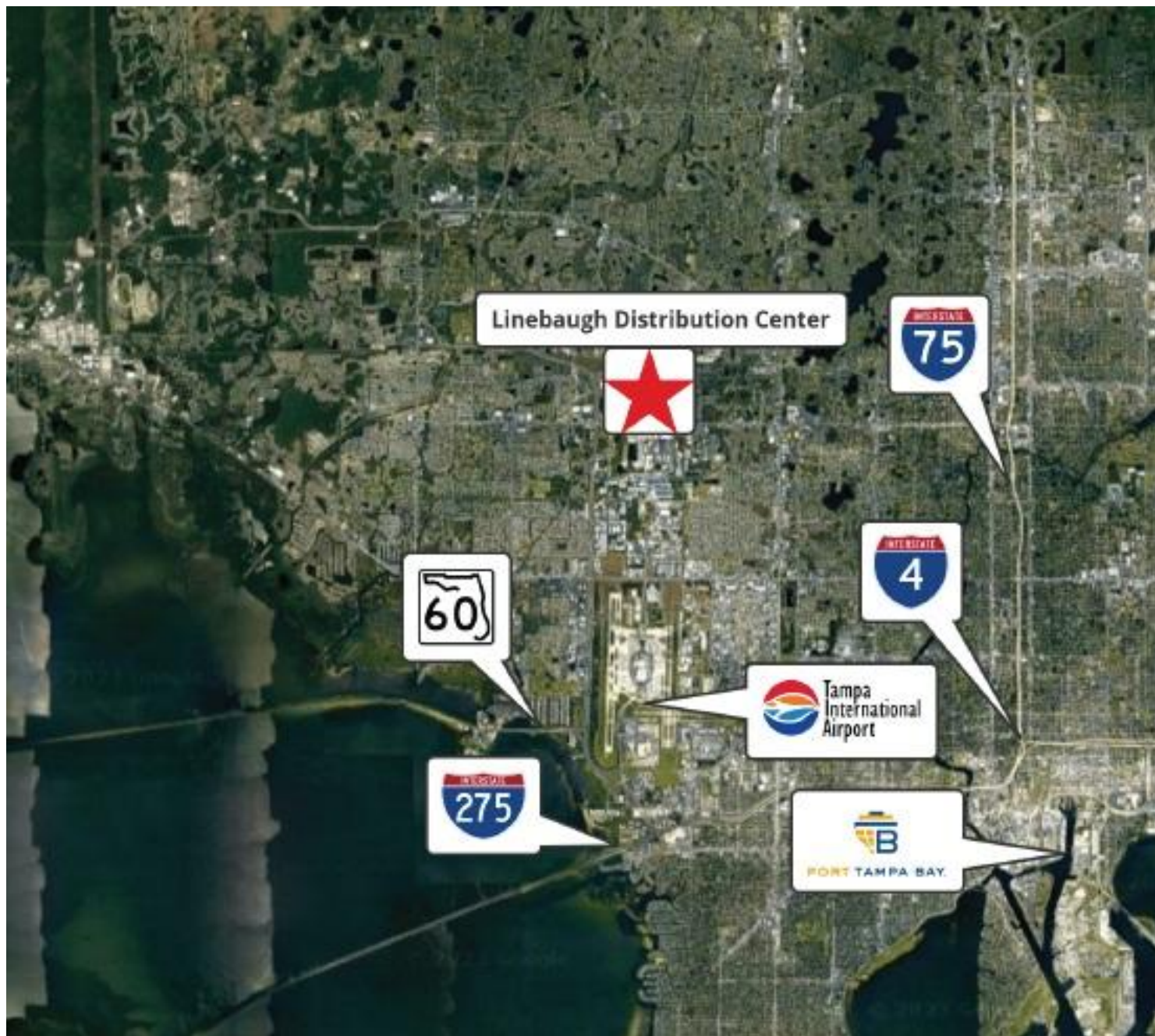
Property Overview

Google Maps Link:	Click Link Here!
Address:	5620 W Linebaugh Ave Tampa, FL 33624 (Suites A + B)
Total Available:	21,849 SF
Park Size:	73,934 total in two (2) buildings
Available:	August 1, 2026
Loading:	3 oversized drive-in doors (14'x16') 2 dock high doors
Power:	600 amps 480 Volt 3 Phase
Clear Height:	24 ft
Zoning:	"M" – Manufacturing, per Hillsborough County permitted uses
Submarket:	Tampa Airport
Parking:	1.14/ 1,000 SF
Lights + Sprinklers:	LED Lights + ESFR Sprinklers
Signage:	Monument and Facade
Location:	Less than 5 miles to TIA, SR 589, I-275, and FL 60

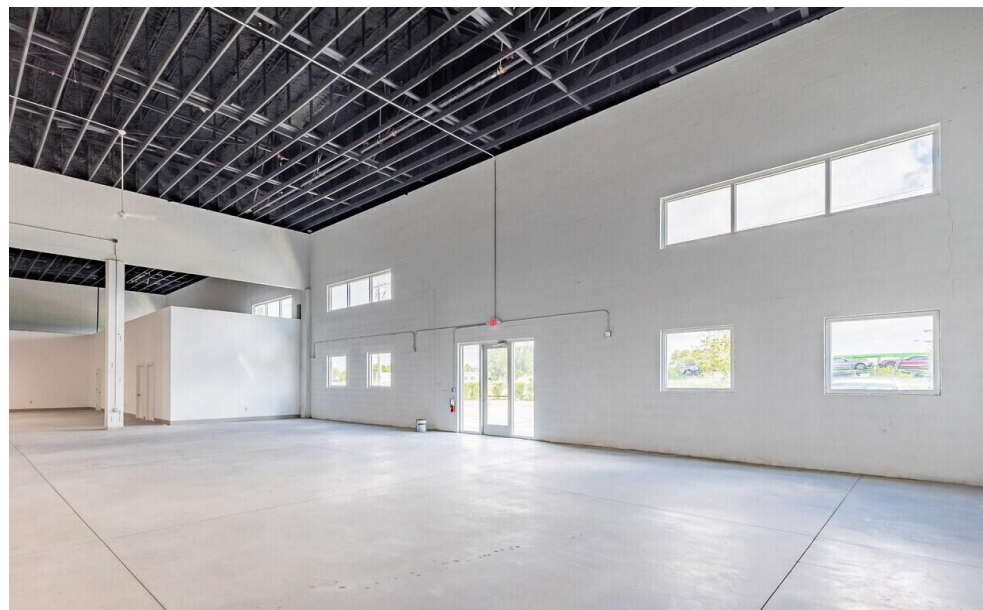
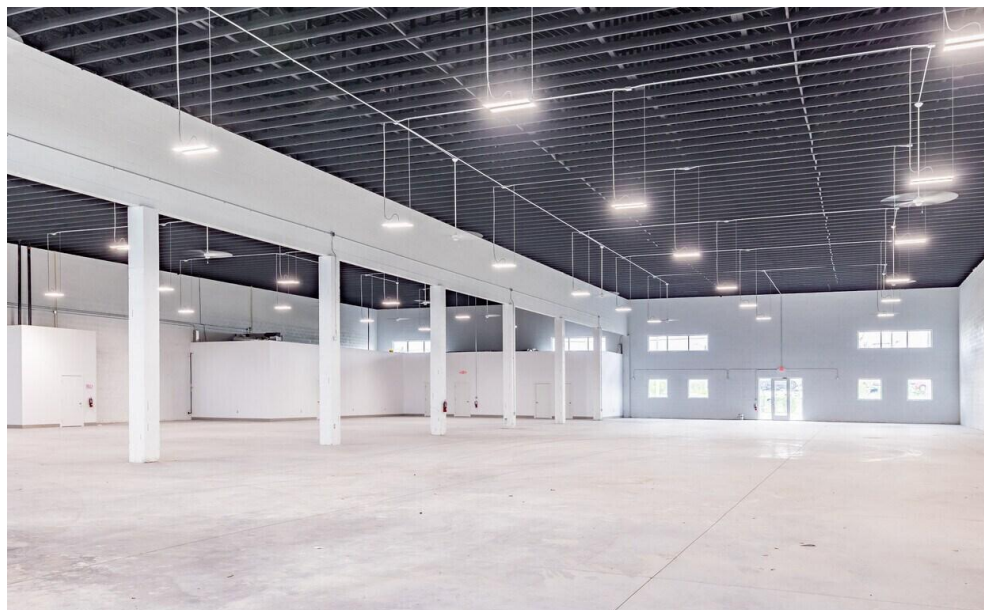
FLOOR PLAN



Quick Access to TIA, I-275, I-4, SR 589, FL60, and Port of Tampa



Photos





Contact for pricing and more info:

Robbie Lober
Managing Member
727 – 999 – 1806
Robbie@LoberRealEstate.com

Devin Beeler
Senior Associate
727 – 709 – 2179
Devin@LoberRealEstate.com

LOBER
REAL ESTATE

The information contained in this document has been obtained from sources believed reliable. While Lober Real Estate LLC does not doubt its accuracy, Lober Real Estate LLC has not verified it and makes no guarantee, warranty, or representation about it. It is your responsibility to independently confirm its accuracy and completeness. Any projections, opinions, assumptions, or estimates used are for example only and do not represent the current or future performance of the property. The value of this transaction to you depends on tax and other factors which should be evaluated by your tax, financial, and legal advisors. You and your advisors should conduct a careful, independent investigation of the property to determine to your satisfaction the suitability of the property for your needs.