

LOCATION MAP  
N.T.S.

RED BERRY ESTATE LTD.  
LOT 1, P-2 & P-4 N.C.B. 10578  
(VOLUME 9961, PAGE 156)

WILLOW SPRING GOLF COURSE

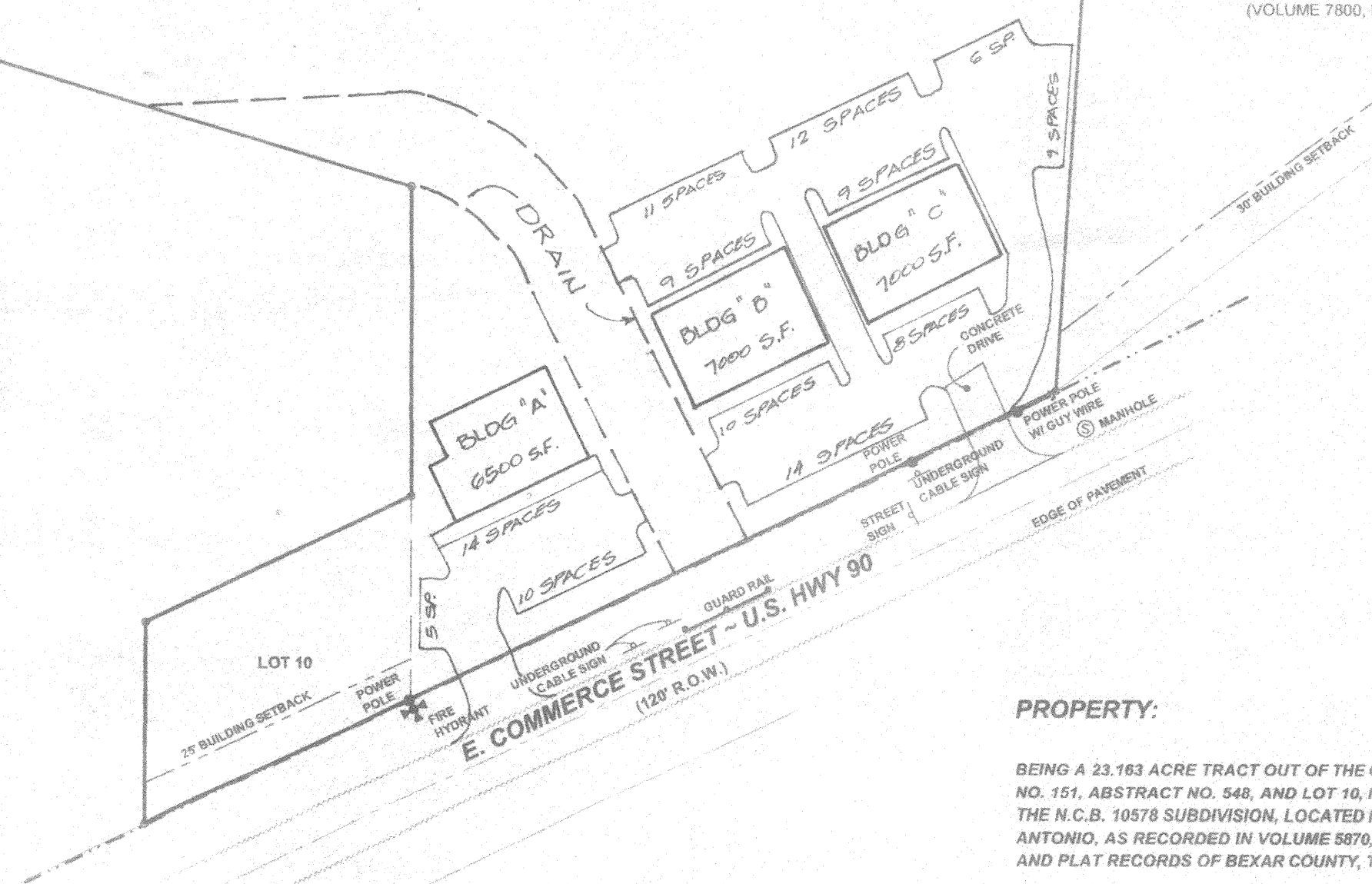
99' SANITARY SEWER (ASSEMBLY)  
(VOLUME 9961, PAGE 156)

23.163 ACRE TRACT  
N.C.B. 10578

CHRISTIANS ENTERPRISES  
P-6, P-6B & P-6C, N.C.B. 10578  
(VOLUME 4777, PAGE 563)

CHUPADERAS SUBDIVISION  
LOT 1, N.C.B. 13817  
(VOLUME 7800, PAGE 5)

LAND RESOURCES CORP.  
P-9 & P-9A, N.C.B. 10578  
(VOLUME 7988, PAGE 173)



**PROPERTY:**  
BEING A 23.163 ACRE TRACT OUT OF THE G. NUNEZ SURVEY NO. 151, ABSTRACT NO. 548, AND LOT 10, N.C.B. 10578, OUT OF THE N.C.B. 10578 SUBDIVISION, LOCATED IN THE CITY OF SAN ANTONIO, AS RECORDED IN VOLUME 5870, PAGE 73, DEED AND PLAT RECORDS OF BEXAR COUNTY, TEXAS.

**Flores & Company Inc.**  
Consulting Engineers  
12915 Jones Maltsberger, Suite 401  
San Antonio, Texas 78247  
Phone: 210.490.9963 Fax: 210.490.0820  
E-mail: Floresco@juno.com

**01 Preliminary Site Plan**  
SCALE: 1" = 100'

Job No 05-18