



**Immediate Access to** shopping, restaurants, and hotels, as well as Forest Park Parkway/I-170 and I-64/40.



# Bemiston Tower



**OFFICE**  
**1,765 - 11,357SF AVAILABLE**

**231 S BEMISTON AVE, CLAYTON, MISSOURI 63105**

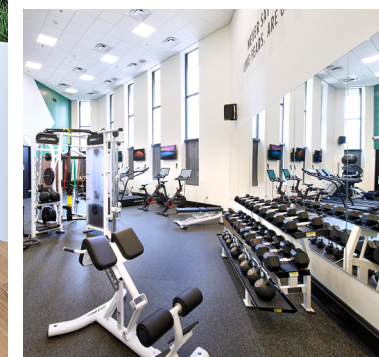
- Beautiful high-rise views of St. Louis and surrounding areas
- Attached five-level garage with automated access system
- Very short walking distance from the Clayton Metrolink
- Tenant-exclusive bike room, fitness center, lockers, and showers
- New on-site café (Toast & Thyme), grab-n-go, and tenant lounge
- Easy access to Forest Park Parkway and Interstate 170



## Newly Renovated Building Amenities

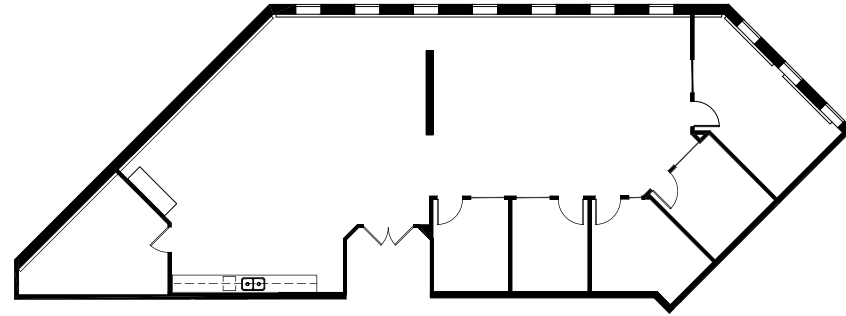


Scan for interactive map of businesses located near Bemiston Tower.



**Suite 102** 2,788SF

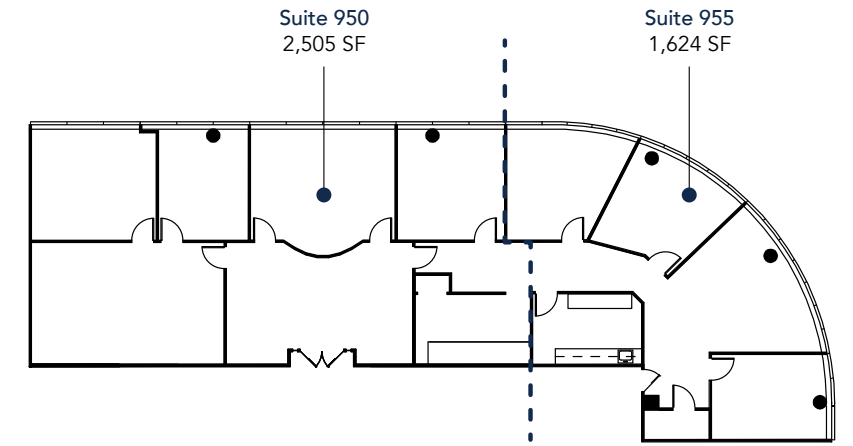
- Now available
- Main lobby exposure
- Five private offices
- Open-concept kitchenette
- Server storage room



[CLICK TO VIEW VIRTUAL TOUR](#)

**Suites 950/955** 4,129SF

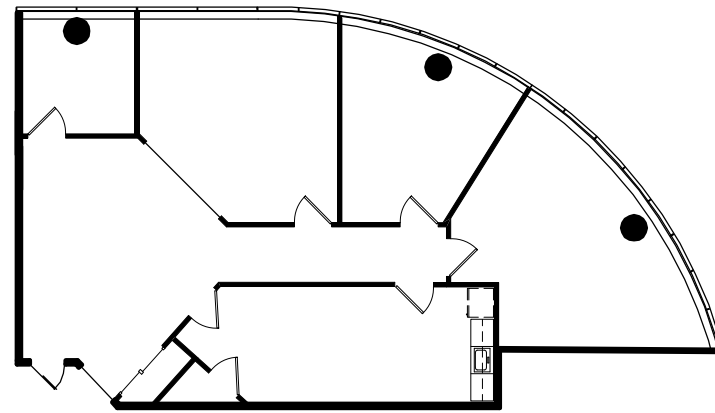
- Now available
- Elevator lobby exposure
- Reception plus conference room
- Six offices and two cubicle areas
- Break room, work room, IT storage



[CLICK TO VIEW VIRTUAL TOUR](#)

**Suite 260** 1,765SF

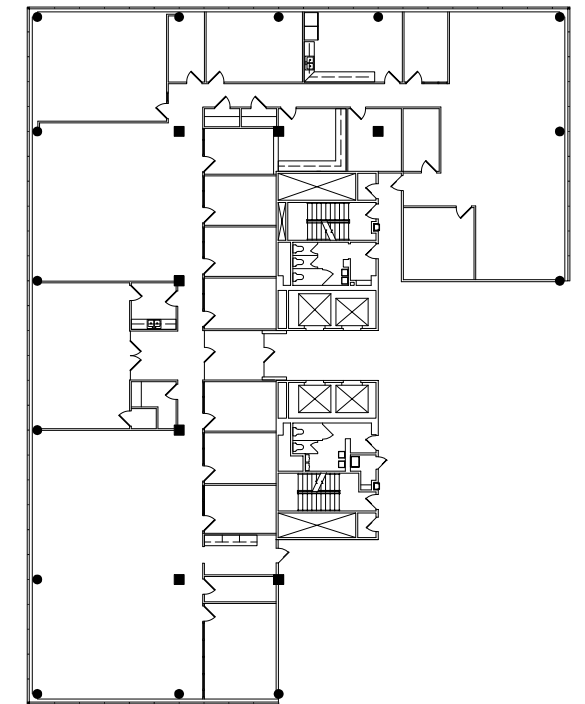
- Now available
- Reception area
- Three private offices
- Dual break and work room
- Glass-front conference room



[CLICK TO VIEW VIRTUAL TOUR](#)

**Suite 500** 10,468SF

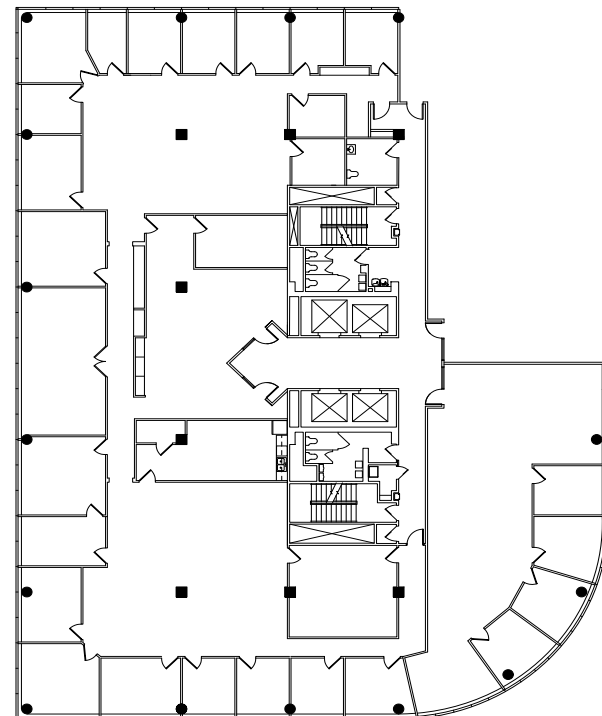
- Now available
- Fully furnished, plug & play space
- Prominent elevator lobby exposure
- Board room & two conference rooms
- 5 Private offices & 2 huddle rooms
- 54 Pre-installed workstations
- Coffee bar, break and wellness room
- Dual work rooms and mail room
- Presentation-ready training facility



[CLICK TO VIEW VIRTUAL TOUR](#)

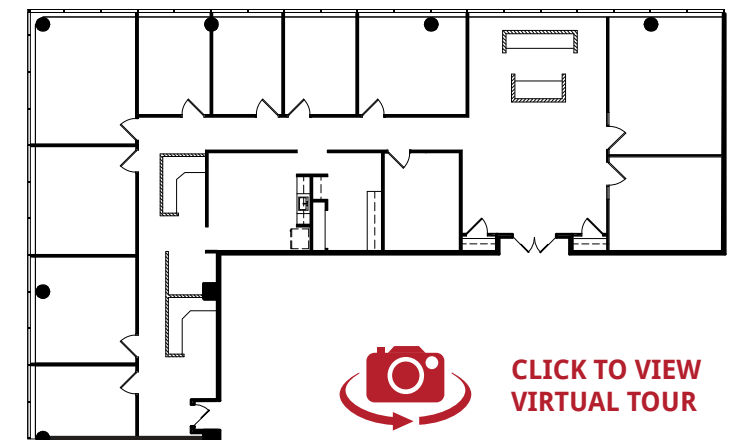
**Suite 400** 11,357SF

- Now available
- Divisible down to 2,199 SF
- Open reception area
- 23 Perimeter private offices
- Fits up to 25 cubicle workstations
- Three conference or huddle rooms
- Break room with kitchenette
- Server and work rooms



**Suite 1220** 4,288SF

- Now available
- Elevator lobby exposure
- Oversized reception area
- Two conference rooms
- Nine private offices
- Break room and work room



[CLICK TO VIEW VIRTUAL TOUR](#)