

2614 MAIN STREET
2616-2618 MAIN STREET



WHERE DEEP ELLUM
GETS TO WORK

ALT+CO
ALTSCHULER AND COMPANY

 ASANA PARTNERS

2614 MAIN STREET

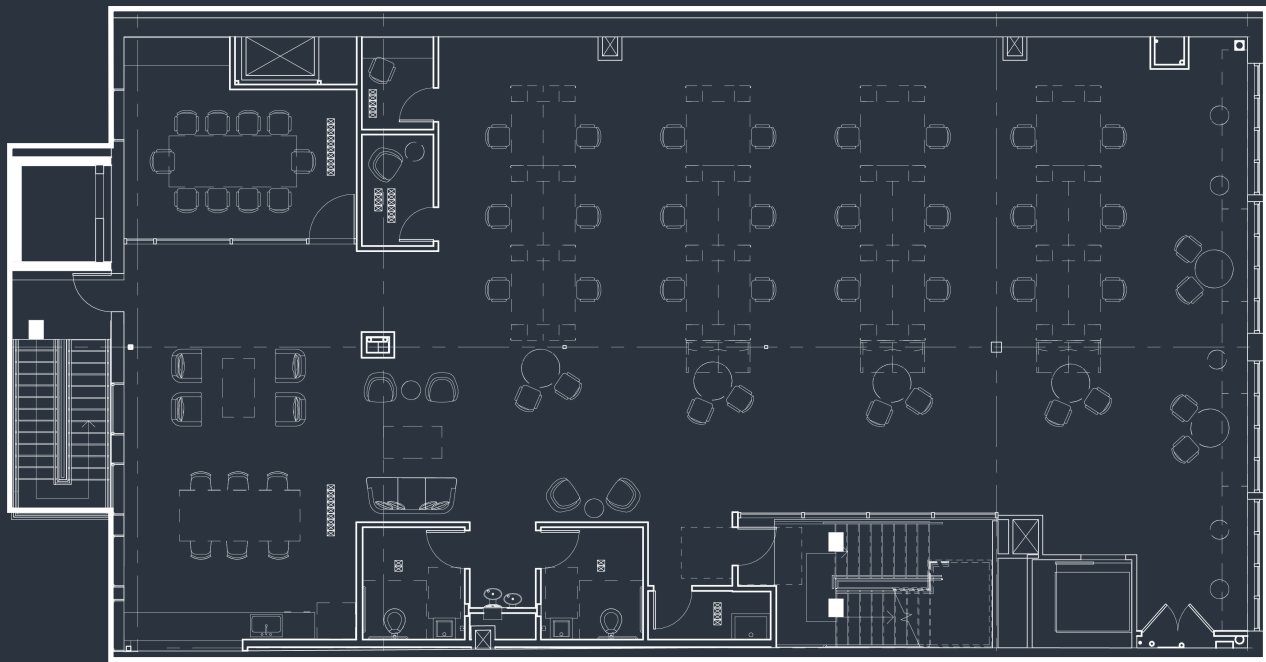
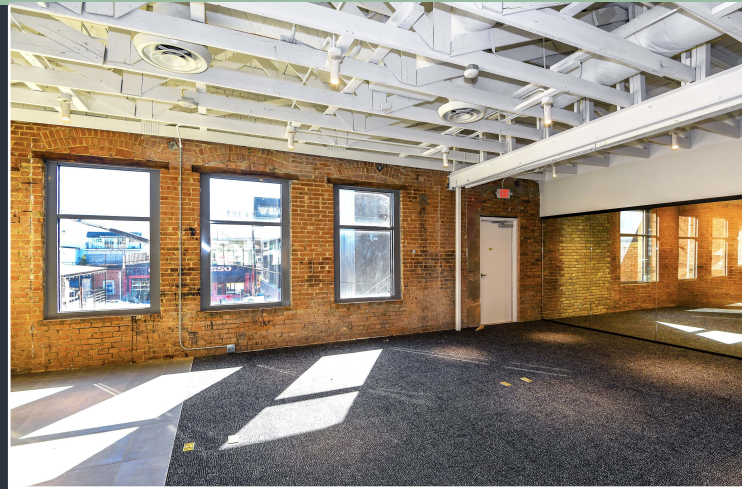
THE DETAILS

- 4,185 SF
- Office space

Move-in ready and fully furnished, this spec suite blends efficiency with character. Exposed ceilings frame a functional layout composed of multiple private offices, a large conference room, a few phone booths, open workspace, and a break area.

HIGHLIGHTS

- Spec-suite / move-in ready
- Exposed ceilings
- 2 offices, 1 conference room, 2 phone rooms, open break area, open workspace
- Fully furnished
- On-site parking



4,185 SF

2616-2618 MAIN STREET

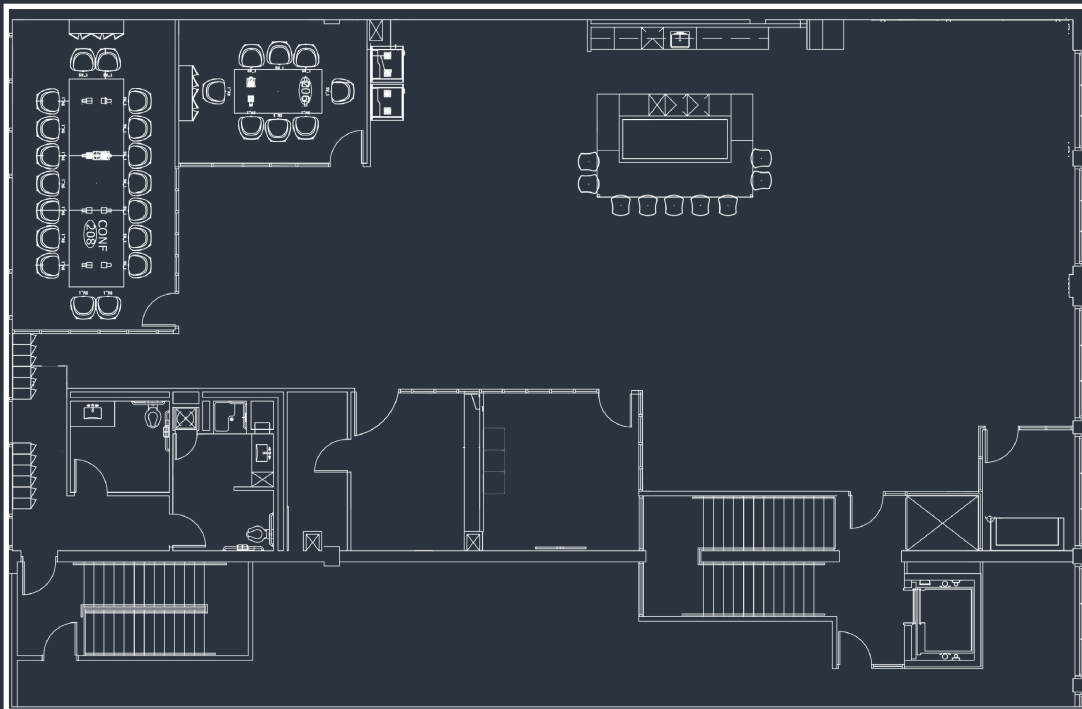
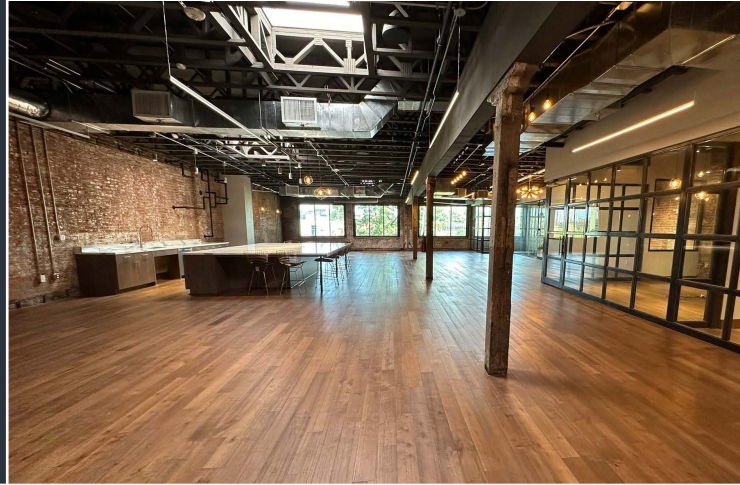
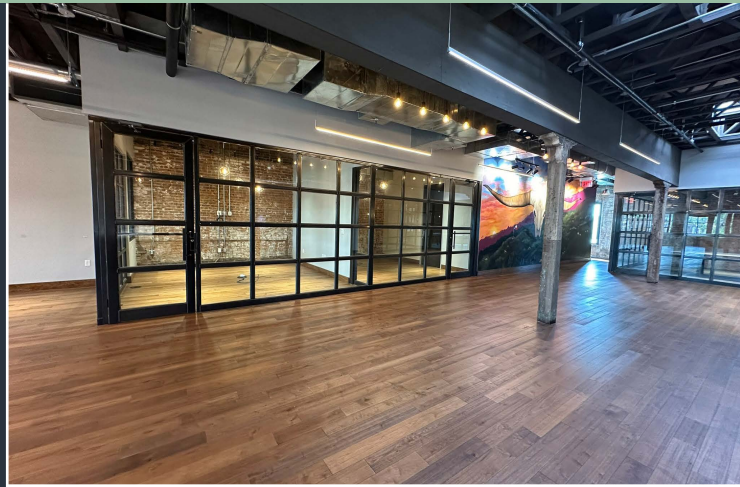
THE DETAILS

- 4,707 SF
- Office space

Prime Deep Ellum suite available with a flexible open layout designed to accommodate your tenant's vision, all within an authentic brick-and-timber setting in a central location.

HIGHLIGHTS

- Spec suite / move-in ready
- Exposed ceilings
- 2 offices, 3 conference rooms, open break area, open workspace
- On-site parking



4,707 SF



PRIME LOCATION

1. Pecan Lodge
2. Emporium Pies
3. Pepe's & Mito's
4. Deep Sushi
5. Velvet Taco
6. Oni Ramen
7. Hawkers
8. OPEN
9. Serious Pizza
10. Twilite Lounge
11. Berni Bean Coffee
12. Palma
13. Twisted Root Burger Co.
14. Cheeba Hut
15. Punch Bowl Social
16. Revolver Taco Lounge
17. Cane Rosso
18. Merit Coffee Co.
19. Vidorra
20. Angry Dog
21. Tanoshii
22. The Bomb Factory
23. Canton Hall
24. Trees
25. Dallas Comedy House
26. Kettle Art Gallery
27. Poets Books
28. Goodwin
29. 1890 Market Place
30. CrossFit Deep
31. Mohler MMA
32. The Case Building
33. Novel
34. Louie Louie's Piano Bar

MORE ON THE SPACES

- Located in Deep Ellum, these spaces sit at the intersection of culture, innovation, and connection
- Steps from acclaimed restaurants, vibrant nightlife, local galleries, and convenient transit
- An energetic backdrop designed for ambitious companies and modern professionals
 - Easy surface-level parking
 - Institutional ownership and management
 - Exterior Signage/Branding Opportunity

