

# EXCLUSIVE LISTING!

0.62 +/- ac. Commercial Land - \$395,000  
at Boulder Highway & S. Nellis Blvd, Las Vegas, NV 89121



- APN # 161-20-502-011
- 0.62 +/- Acres
- Unincorporated Clark County-Paradise jurisdiction
- Zoned CG-Commercial General
- Planned Land Use-CM- Corridor Mixed-Use
- Property Taxes- \$1,178.19
- Near Casino resorts, commercial businesses and residences
- Improved street with curbs and gutters, utilities nearby



**Mark Anthony Rua**  
**Brokers**

S.026655

Office: 702-992-7534  
Cell: 702-595-6244

2855 St Rose Parkway, Suite 100, Henderson, NV 89052  
[markanthonyrua@gmail.com](mailto:markanthonyrua@gmail.com) [www.mrlandlasvegas.com](http://www.mrlandlasvegas.com)



The information contained herein is subject to verification and no liability for errors or omissions is assumed. The price, data, and other information are subject to change or the listing may be withdrawn without notice.

0.62 +/- ac. Commercial Land - \$395,000

Parcel Dimensions



**Mark Anthony Rua**  
**Brokers**

2855 St Rose Parkway, Suite 100, Henderson, NV 89052  
[markanthonyrua@gmail.com](mailto:markanthonyrua@gmail.com) [www.mrlandlasvegas.com](http://www.mrlandlasvegas.com)

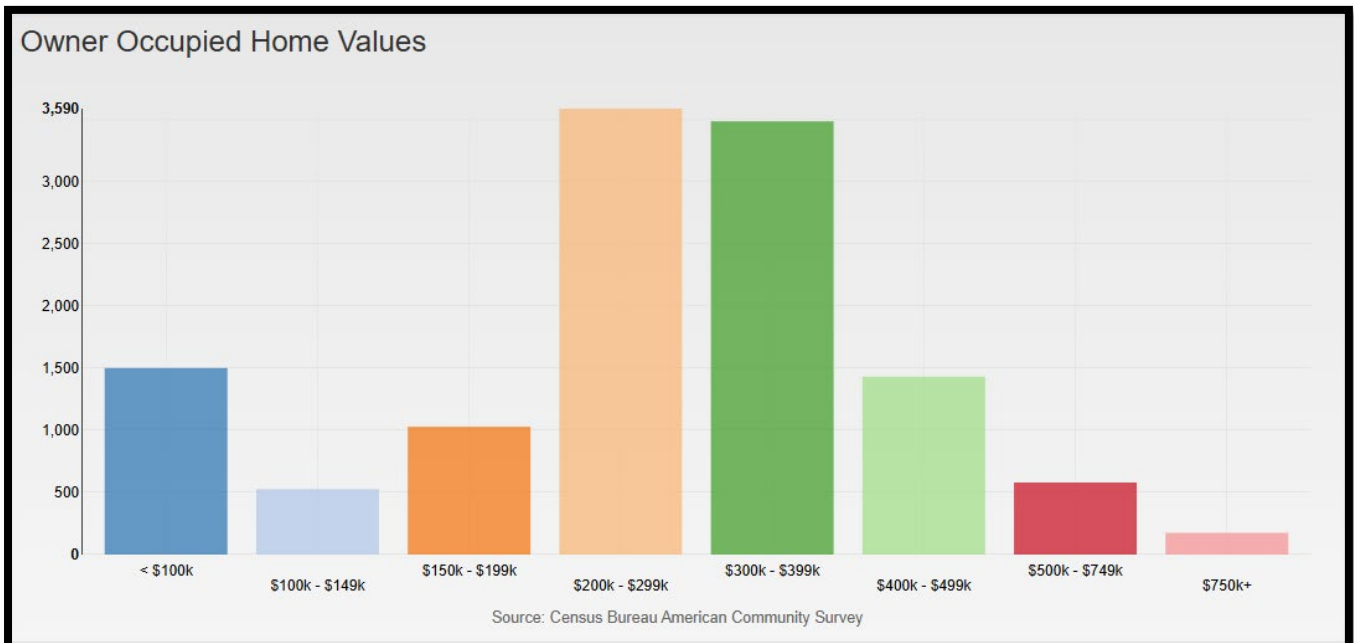
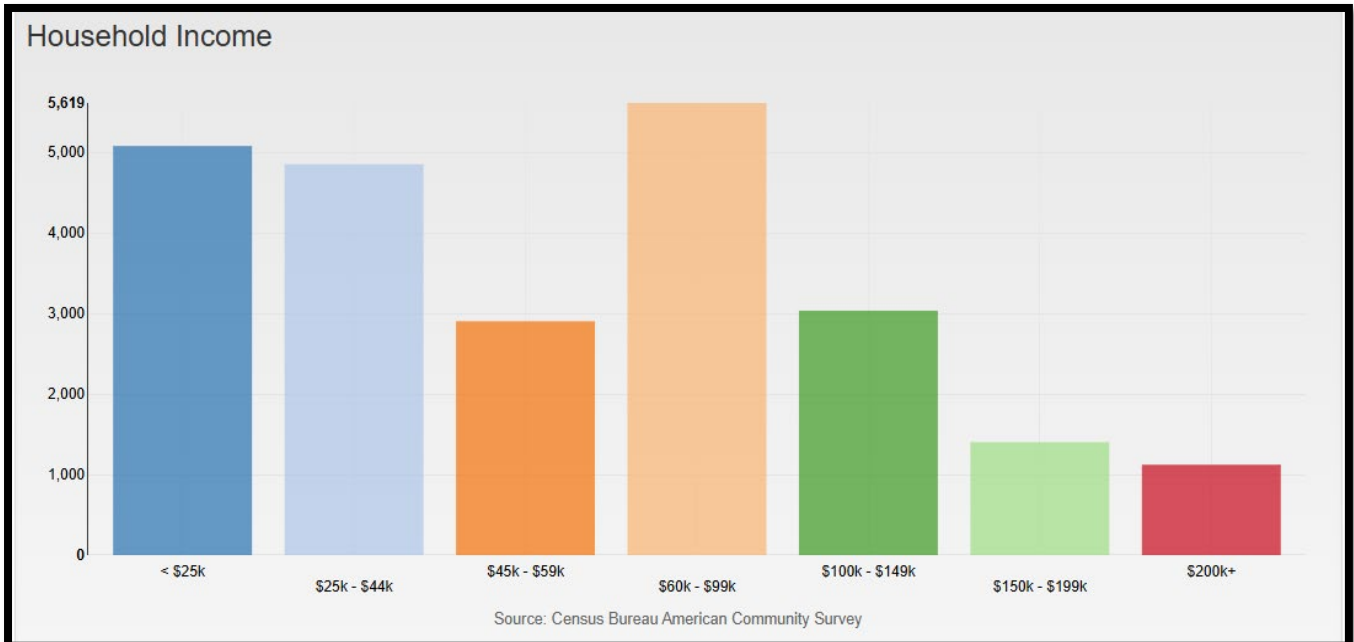
Office: 702-992-7534  
Cell: 702-595-6244



The information contained herein is subject to verification and no liability for errors or omissions is assumed. The price, data, and other information are subject to change or the listing may be withdrawn without notice.

0.62 +/- ac. Commercial Land - \$395,000

## Zip Code-89121 Demographics



**Mark Anthony Rua**  
**Brokers**

2855 St Rose Parkway, Suite 100, Henderson, NV 89052  
[markanthonyrua@gmail.com](mailto:markanthonyrua@gmail.com) [www.mrlandlasvegas.com](http://www.mrlandlasvegas.com)

Office: 702-992-7534  
Cell: 702-595-6244





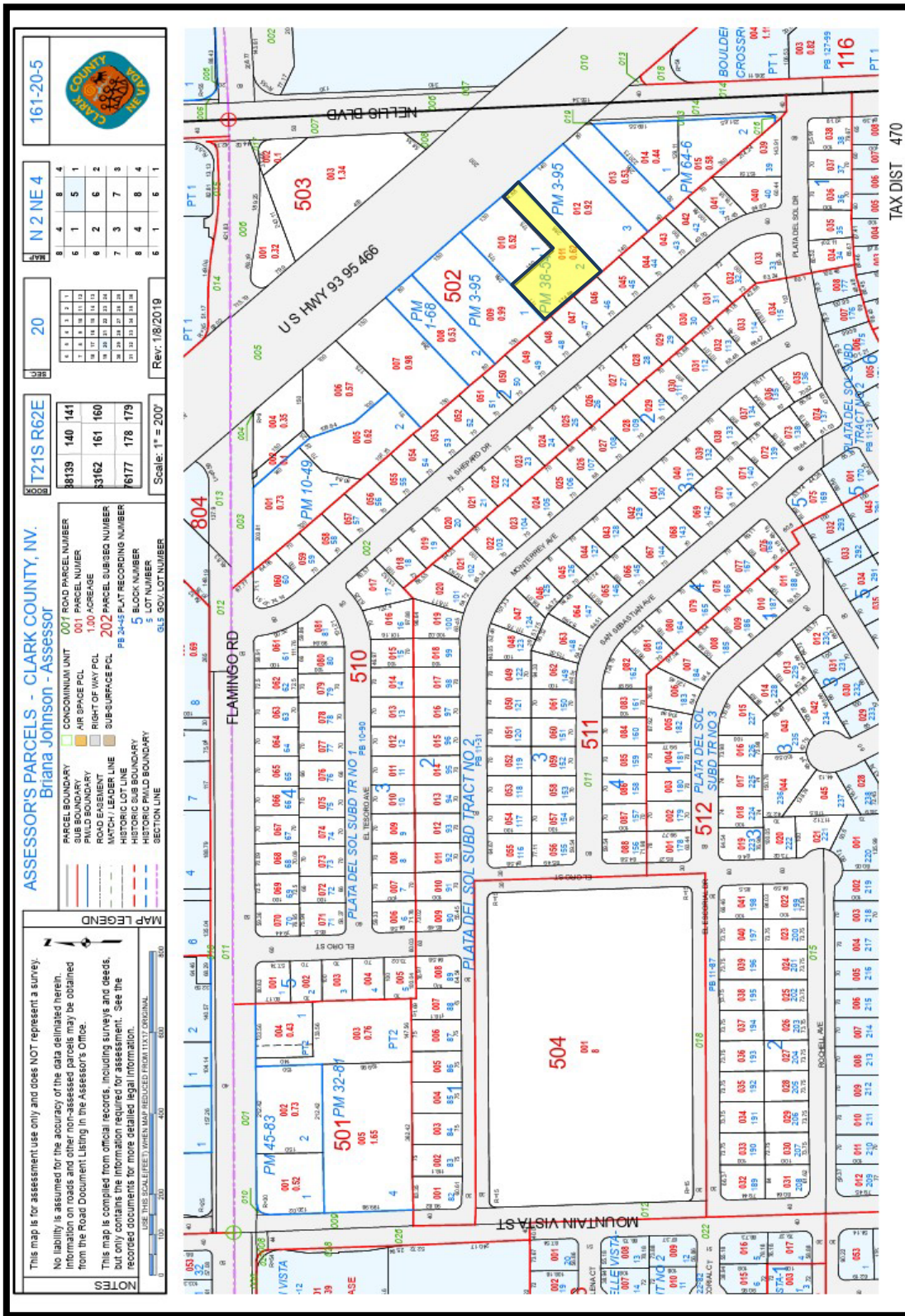
**Mark Anthony Rua**  
**ERA Brokers**

2855 St Rose Parkway, Suite 100, Henderson, NV 89052  
[markanthonyrua@gmail.com](mailto:markanthonyrua@gmail.com) [www.mrlandlasvegas.com](http://www.mrlandlasvegas.com)

Office: 702-992-7534  
 Cell: 702-595-6244



The information contained herein is subject to verification and no liability for errors or omissions is assumed. The price, data, and other information are subject to change or the listing may be withdrawn without notice.



**0.62 +/- ac. Commercial Land**