

# OFFICE SUITES FOR LEASE



1110 N Florida Ave, Tampa, FL 33602





## Available Suites

- Suite **203**: 220 SF

## Building Details

- Suites starting at \$800/mo
- Private, professional office suites in the heart of downtown Tampa, ideal for attorneys, consultants, and professional firms
- 24-hour access & On-site parking
- Rooftop deck access
- Shared kitchen, conference & gym with shower
- Excellent access to I-275, I-4 and Crosstown
- Centrally located: walk to courthouses, restaurants, The Riverwalk & Armature Works

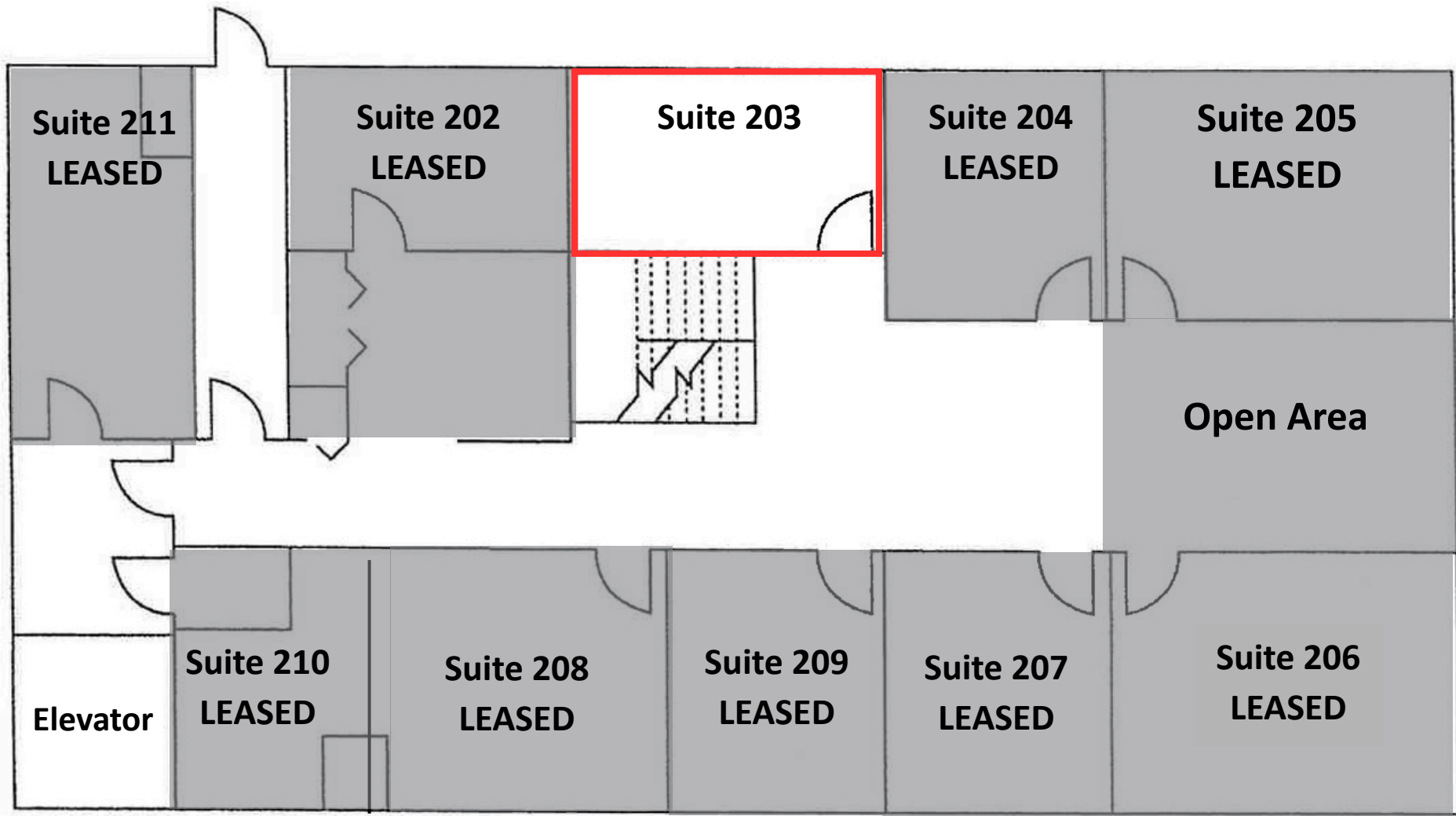


**Abbey Ahern**

Principal, Brokerage

813.416.7155

[Abbey@DohringAhern.com](mailto:Abbey@DohringAhern.com)



**\*NOT TO SCALE**

**1110 N Florida Ave, Tampa, FL 33602**

**Abbey Ahern**

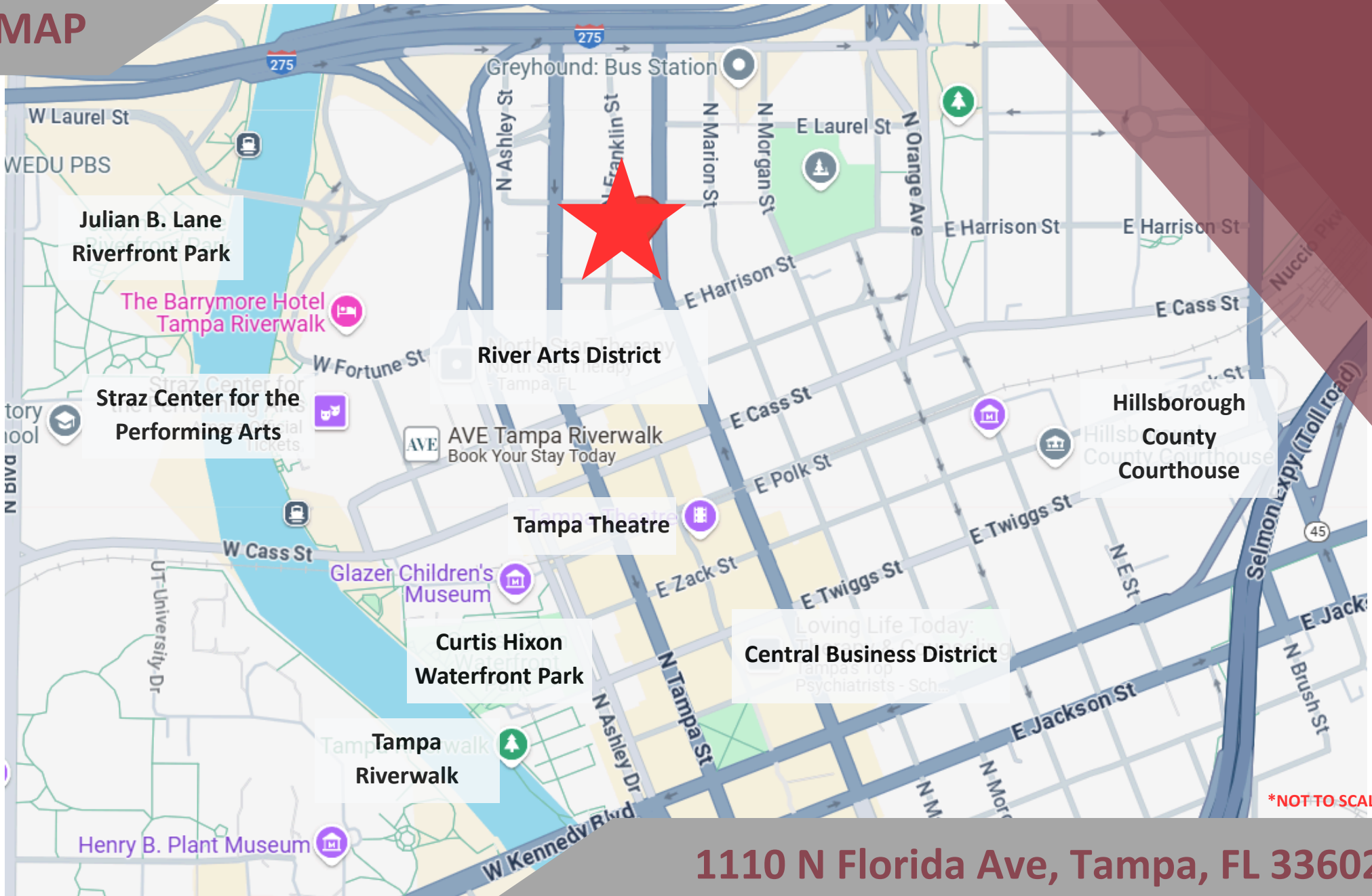
Principal, Brokerage

813.416.7155

Abbey@DohringAhern.com



# MAP



\*NOT TO SCALE

1110 N Florida Ave, Tampa, FL 33602

**Abbey Ahern**  
Principal, Brokerage  
813.416.7155  
Abbey@DohringAhern.com

