



# MAIN STREET

1122 LADY STREET  
COLUMBIA, SC

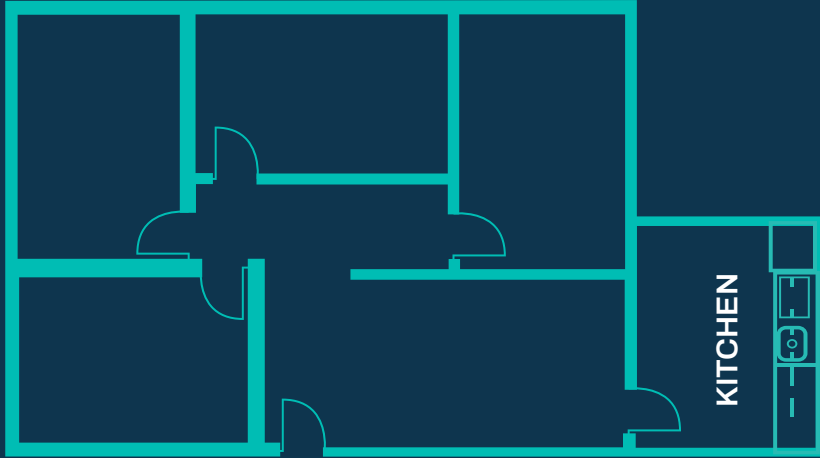


# EXPANSIVE<sup>®</sup>

workspace

## TEAM SUITE 800E

ACCOMODATES HEADCOUNT OF UP TO 17



1954 SQUARE FEET OF PRIVATE SPACE PLUS 3000+SF OF SHARED WORKSPACE, COWORKING LOUNGE, KITCHEN, PHONE BOOTHS & MORE

### SOLUTION INCLUDES:



FULLY FURNISHED



DIRECT FIBER INTERNET & WIFI ACCESS



EXPANSIVE LOUNGE



COFFEE & TEA



24/7 ACCESS



ON-SITE MGMT



HIGH SPEED PRINTERS



UTILITIES



MOTHERS' ROOM



COMMUNITY APP



BIKE ROOM



NETWORK ACCESS



EXPLORE OUR AVAILABLE TEAM SUITE OPTIONS TODAY!

CONTACT EXPANSIVE

877.301.6217 | sales@expansive.com