

FOR LEASE



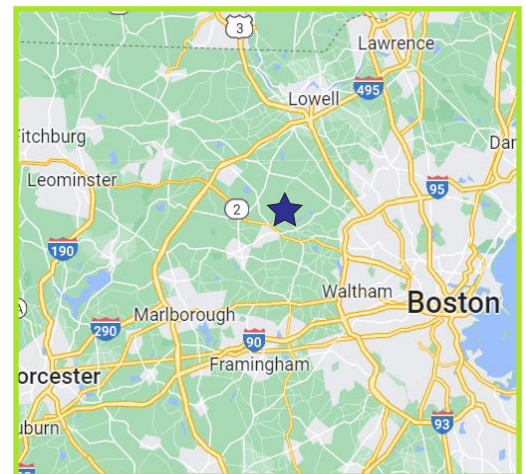
Property Highlights:

- Amazing downtown Concord location
- Former Welch's headquarters
- Professionally managed
- Reserved parking in rear
- Adjacent to municipal lot
- Handicap accessible with elevator

OFFICE SPACE IN THE HEART OF CONCORD, MA

Available Spaces:

- 1st floor - single office
 - 2nd floor - 2,792 SF*
 - 4th floor - 1,150 SF**
 - 4th floor - 2,680 SF**
- *Can be combined to lease entire 2nd floor
**4th floor spaces can be combined for 3,830 SF



Contact:

Tyler Spring 617.834.8602
George Robb 857.891.7254

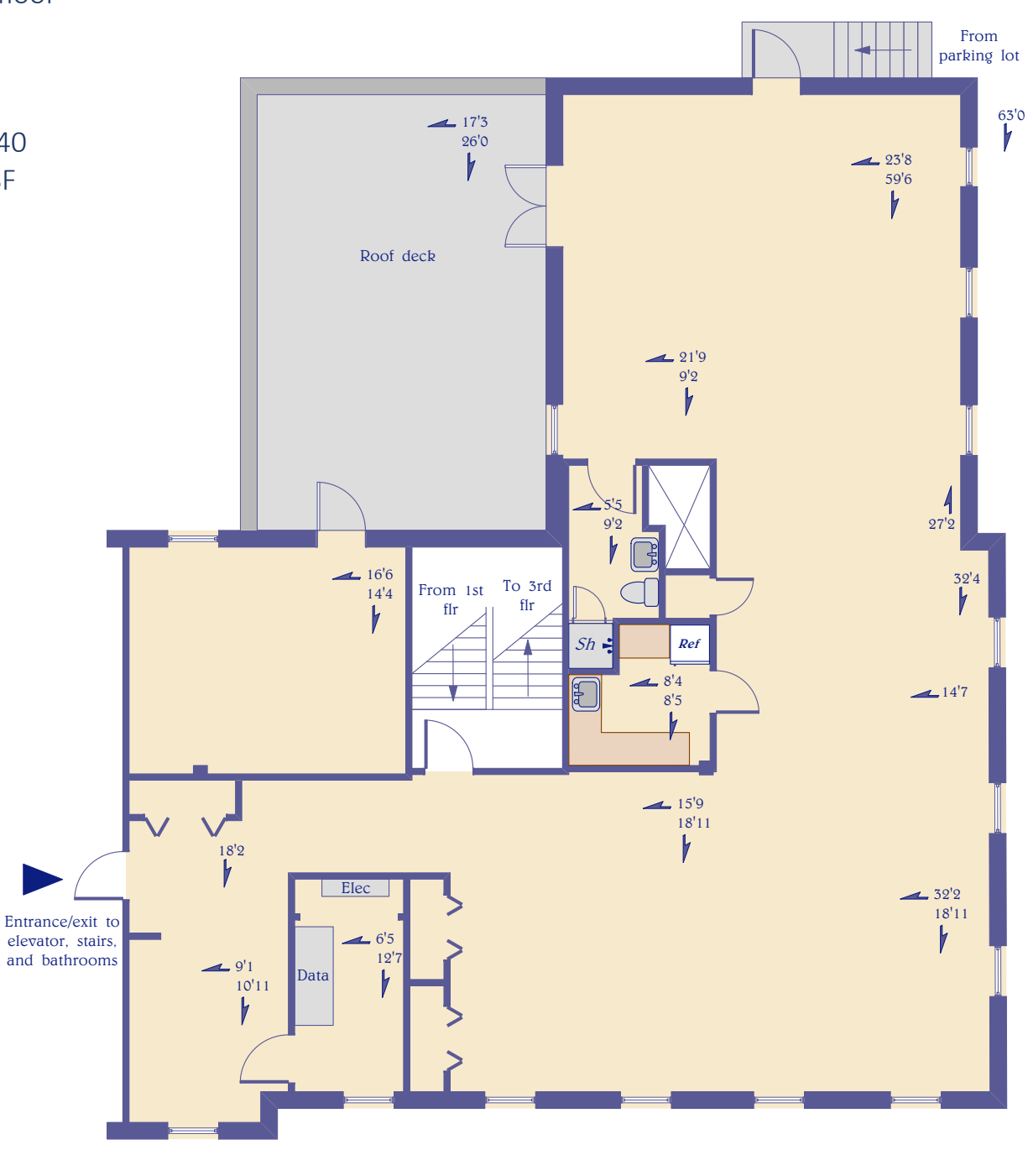
Tspring@omniproperties.com
Grobbs@omniproperties.com

 **OMNI PROPERTIES**
6 Lyberty Way, Westford MA 01886

100 Main Street, Concord MA

2nd floor

Suite 240
2,792 SF



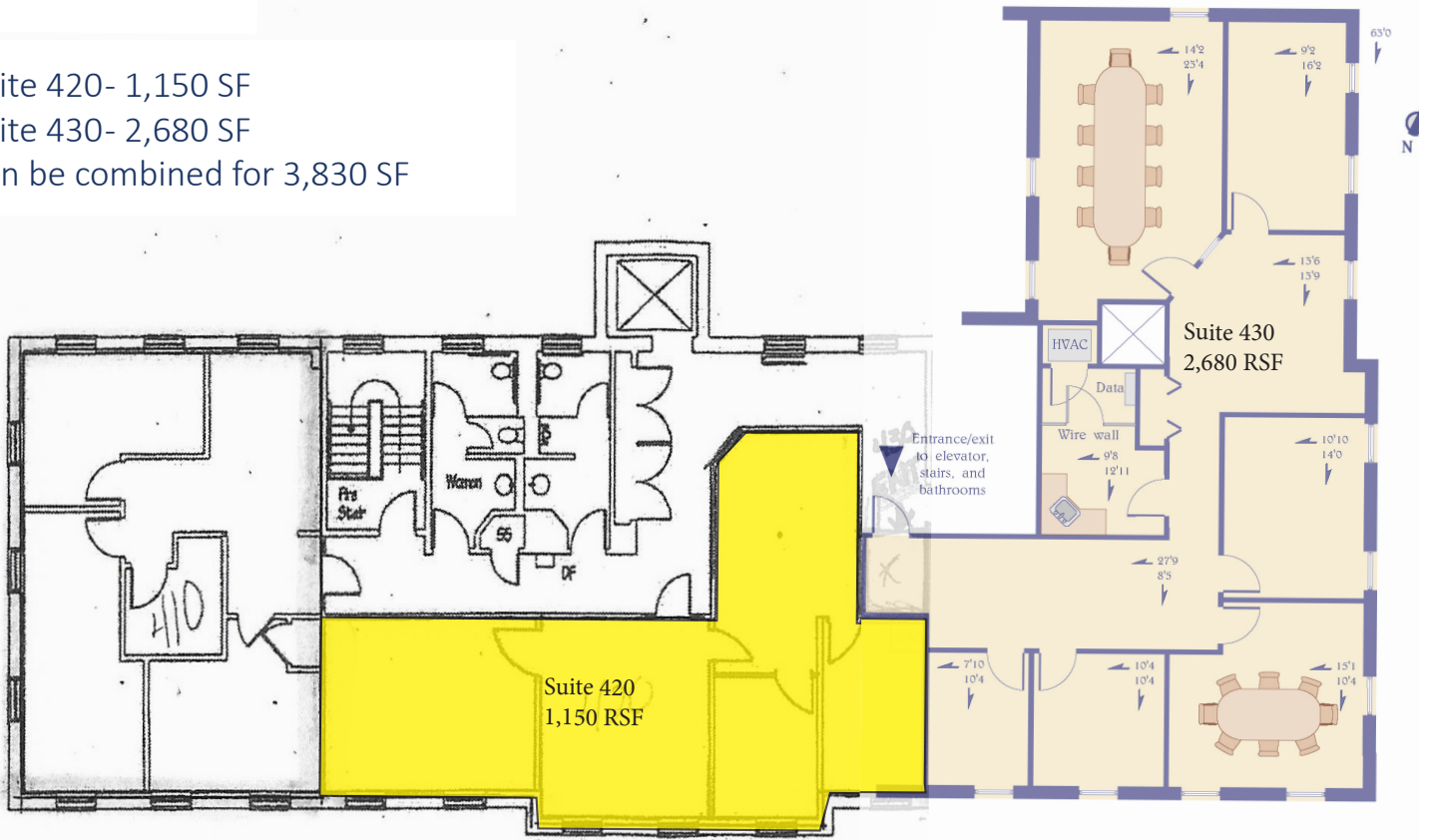
100 Main Street, Concord MA

4th floor

Suite 420- 1,150 SF

Suite 430- 2,680 SF

Can be combined for 3,830 SF



1st floor

Office 4

\$725/Month (includes utilities)

Kitchenette - shared with building

