



RAINTREE VILLAGE SHOPPING CENTER

RETAIL SPACE AVAILABLE FOR LEASE

150 Hwy & SW Ward Rd (SEC), Lee's Summit, MO



LEASE RATE \$20/SF NNN | 1,139 SF SPACE

DEMOGRAPHICS

| | 1 mile | 3 miles | 5 miles |
|-----------------------|-----------|-----------|-----------|
| Estimated Population | 9,709 | 29,137 | 72,035 |
| Avg. Household Income | \$154,266 | \$150,517 | \$132,536 |

- 33,340 SF shopping center on 8.06 acres
- Great opportunity to get in at low market rents
- Recent updates completed with no deferred maintenance
- Located off 150 Highway in a growing suburb of Greater Kansas City
- Beautifully maintained neighborhood center
- New Walmart Supercenter and multiple other developments in the immediate vicinity

[CLICK HERE TO VIEW MORE LISTING INFORMATION](#)

For More Information Contact:

GARRETT COHOON | 816.412.7365 | gcohoon@blockandco.com

MEGAN BROWN | 816.412.7352 | mbrown@blockandco.com

Exclusive Agents





RAINTREE VILLAGE SHOPPING CENTER

RETAIL SPACE AVAILABLE FOR LEASE

150 Hwy & SW Ward Rd (SEC), Lee's Summit, MO

AERIAL





RAINTREE VILLAGE SHOPPING CENTER

RETAIL SPACE AVAILABLE FOR LEASE

150 Hwy & SW Ward Rd (SEC), Lee's Summit, MO

AERIAL





RAINTREE VILLAGE SHOPPING CENTER

RETAIL SPACE AVAILABLE FOR LEASE

150 Hwy & SW Ward Rd (SEC), Lee's Summit, MO

AERIAL



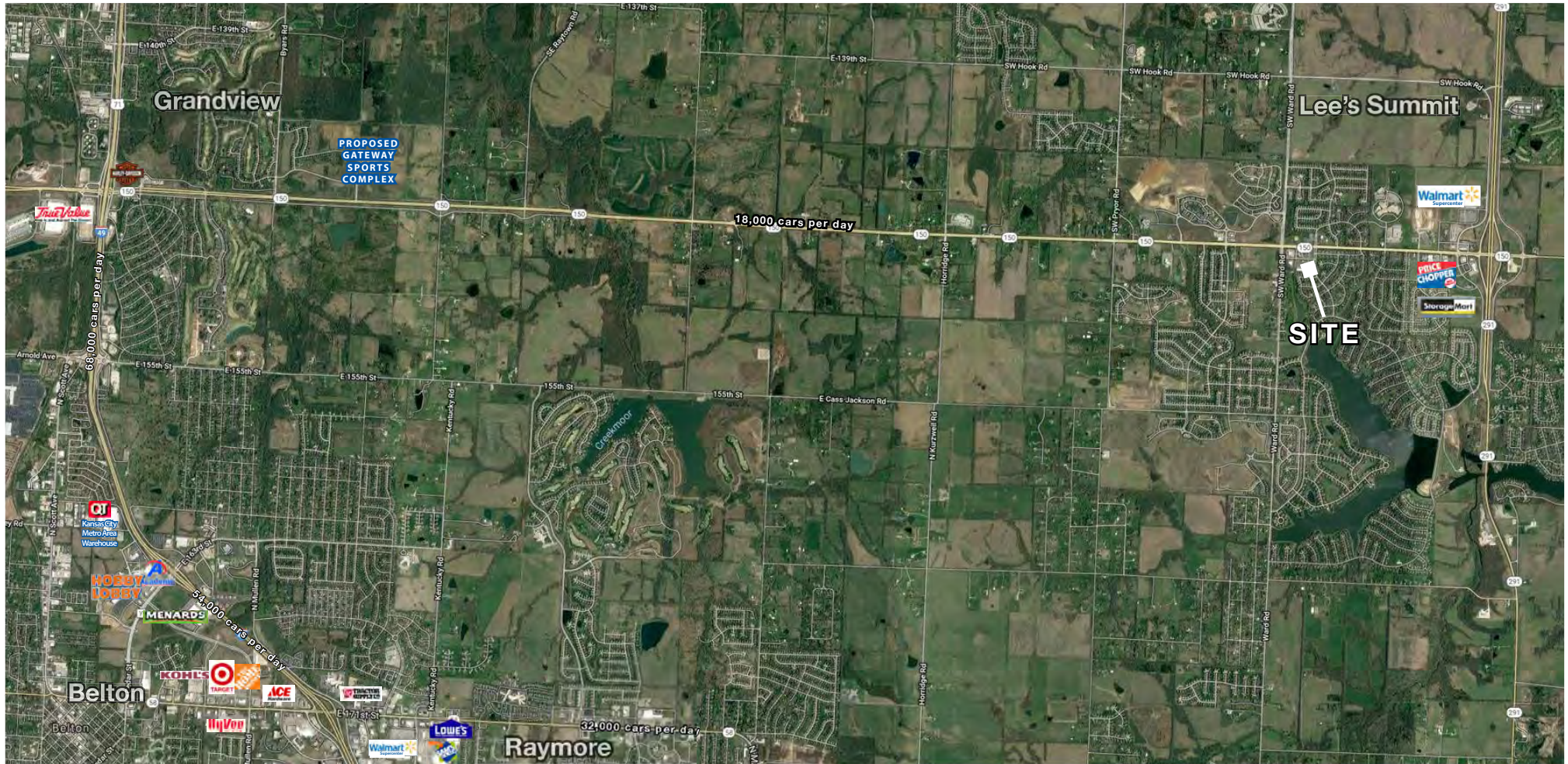


RAINTREE VILLAGE SHOPPING CENTER

RETAIL SPACE AVAILABLE FOR LEASE

150 Hwy & SW Ward Rd (SEC), Lee's Summit, MO

AERIAL





RAINTREE VILLAGE SHOPPING CENTER

RETAIL SPACE AVAILABLE FOR LEASE

150 Hwy & SW Ward Rd (SEC), Lee's Summit, MO

SITE PLAN



All information furnished regarding property for sale or lease is from sources deemed reliable, but no warranty or representation is made as to the accuracy thereof and the same is subject to errors, omissions, changes of prices, rental or other conditions, prior sale or lease or withdrawal without notice.

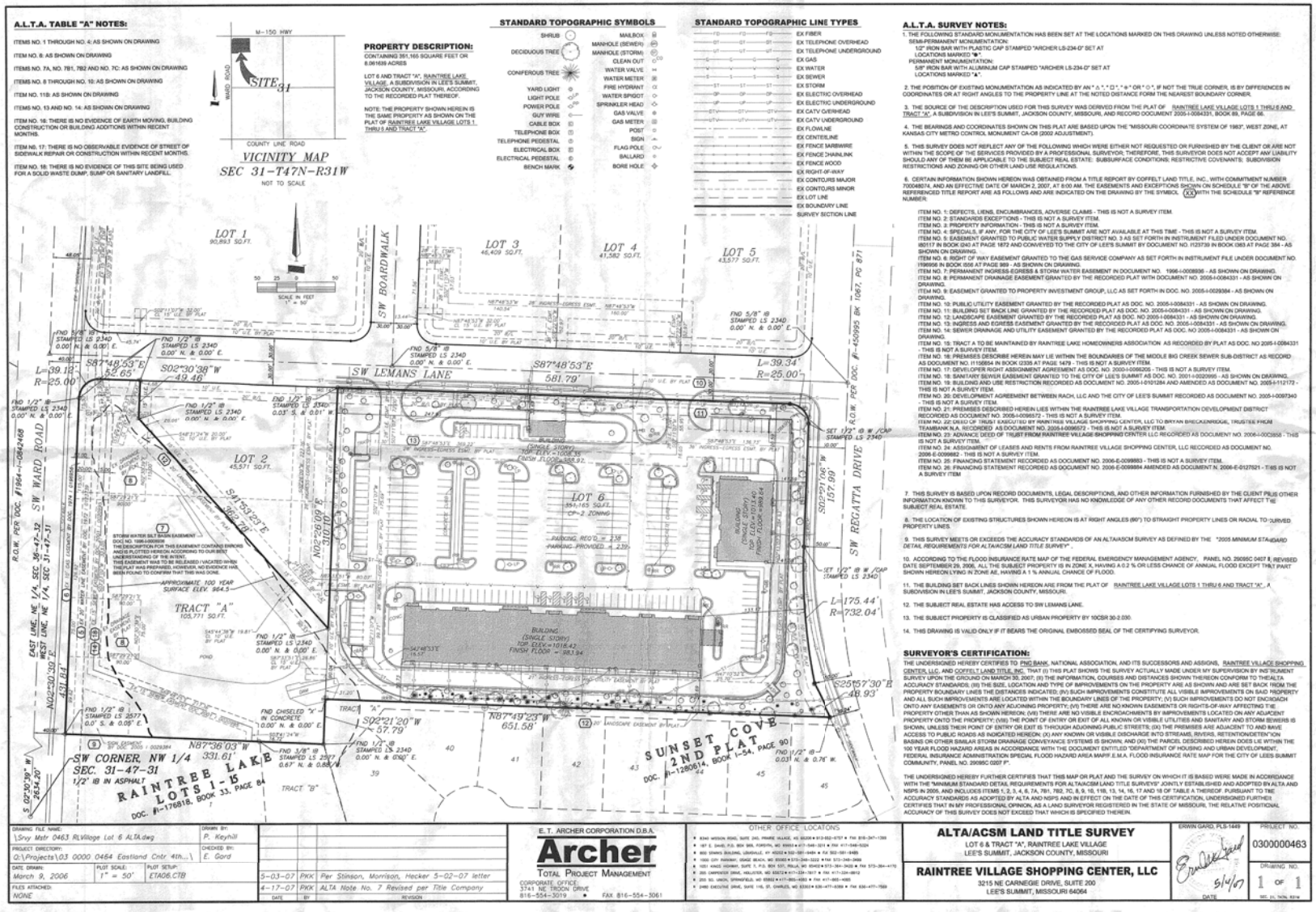


RAINTREE VILLAGE SHOPPING CENTER

RETAIL SPACE AVAILABLE FOR LEASE

150 Hwy & SW Ward Rd (SEC), Lee's Summit, MO

SURVEY



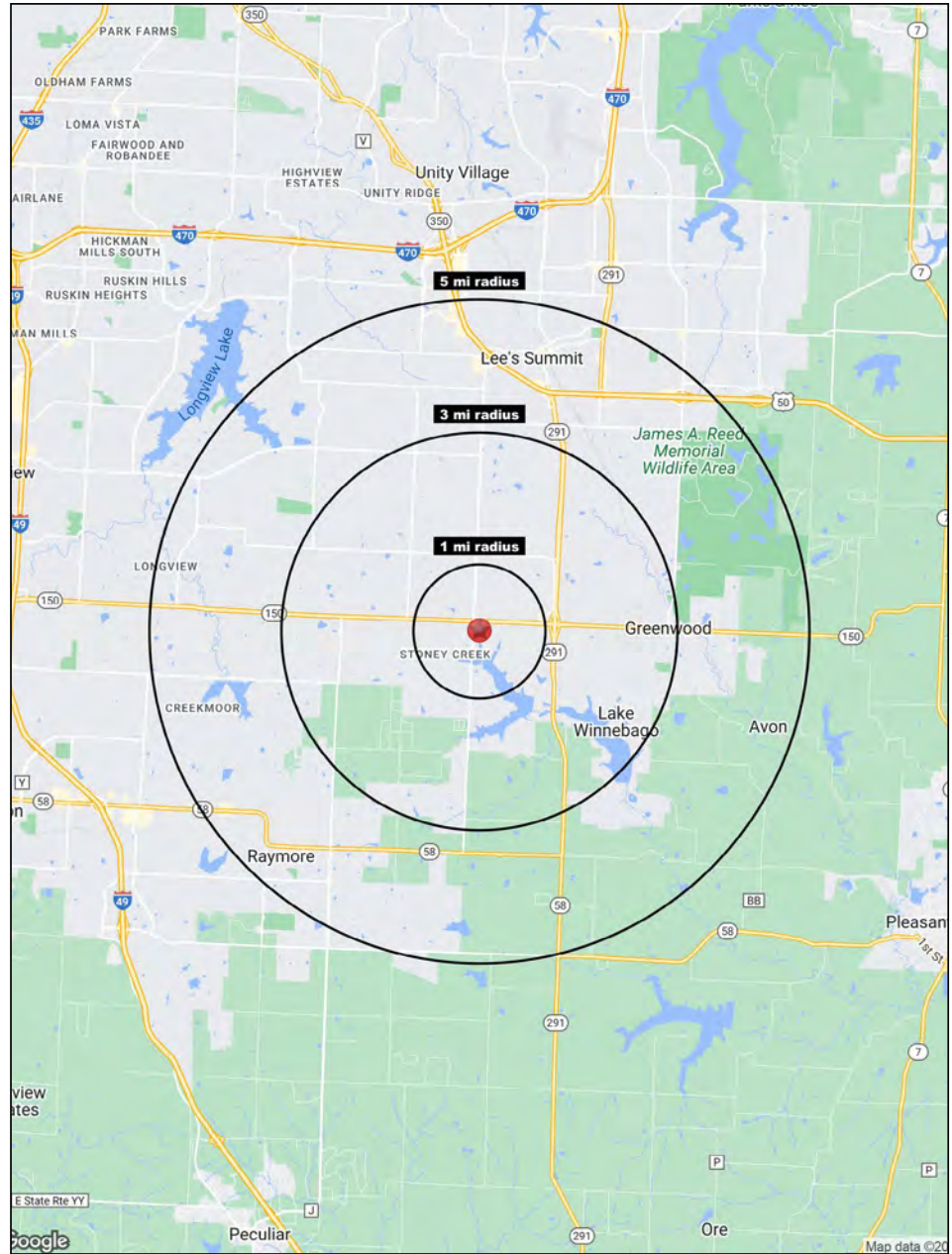
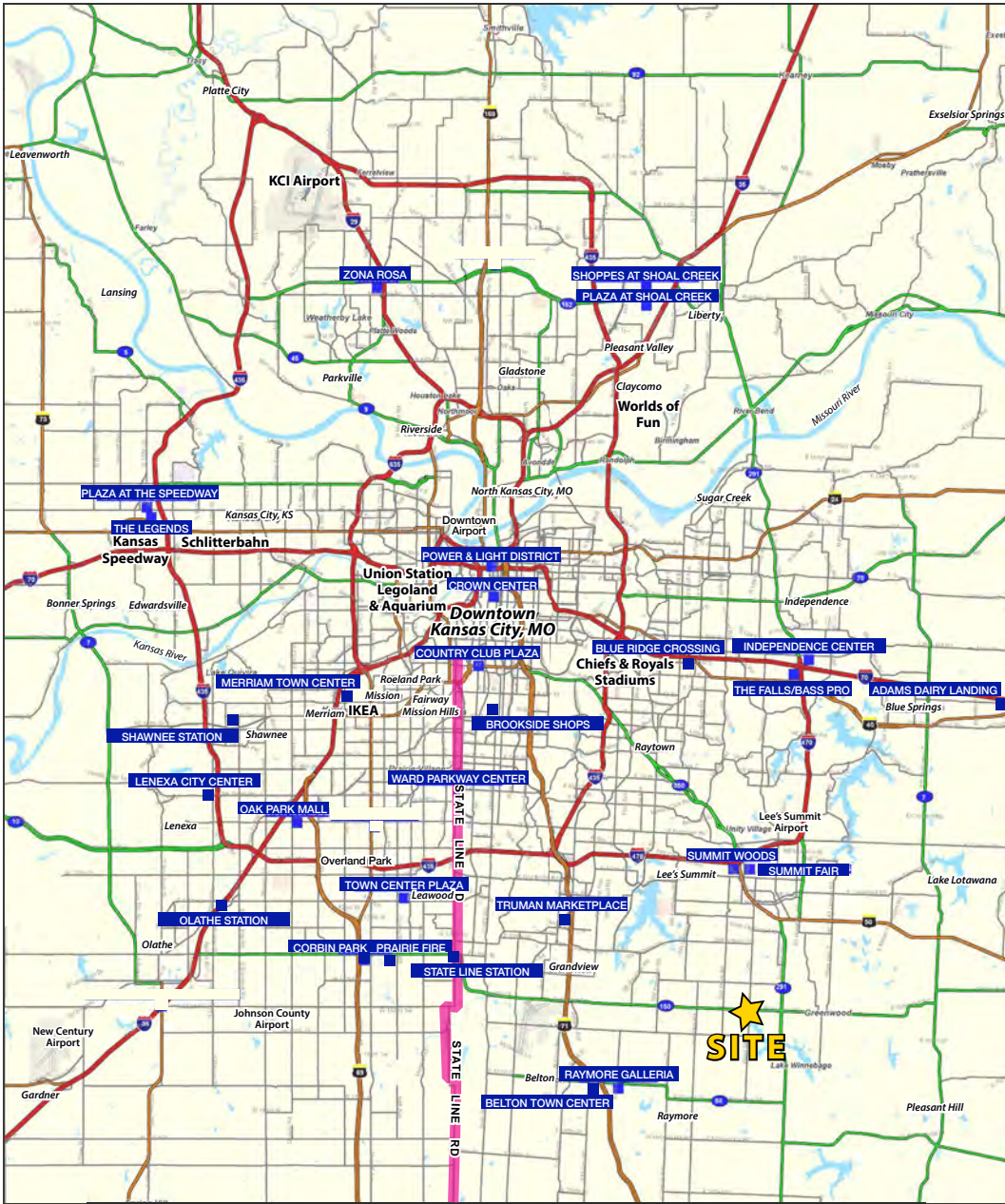
All information furnished regarding property for sale or lease is from sources deemed reliable, but no warranty or representation is made as to the accuracy thereof and the same is subject to errors, omissions, changes of prices, rental or other conditions, prior sale or lease or withdrawal without notice.



RAINTREE VILLAGE SHOPPING CENTER

RETAIL SPACE AVAILABLE FOR LEASE

150 Hwy & SW Ward Rd (SEC), Lee's Summit, MO



Block & Company, Inc., Realtors | 605 W. 47th Street, Ste. 200, Kansas City, MO 64112 | 816.753.6000 | www.blockandco.com



All information furnished regarding property for sale or lease is from sources deemed reliable, but no warranty or representation is made as to the accuracy thereof and the same is subject to errors, omissions, changes of prices, rental or other conditions, prior sale or lease or withdrawal without notice.



RAINTREE VILLAGE SHOPPING CENTER

RETAIL SPACE AVAILABLE FOR LEASE

150 Hwy & SW Ward Rd (SEC), Lee's Summit, MO

| 817-899 SW Lemans Lane Lee's Summit, MO 64082 | 1 mi radius | 3 mi radius | 5 mi radius |
|---|----------------|----------------|----------------|
| Population | | | |
| 2023 Estimated Population | 9,709 | 29,137 | 72,035 |
| 2028 Projected Population | 12,058 | 33,768 | 78,767 |
| 2020 Census Population | 8,394 | 27,070 | 70,386 |
| 2010 Census Population | 7,111 | 22,699 | 62,053 |
| Projected Annual Growth 2023 to 2028 | 4.8% | 3.2% | 1.9% |
| Historical Annual Growth 2010 to 2023 | 2.8% | 2.2% | 1.2% |
| 2023 Median Age | 36.8 | 38.3 | 39.5 |
| Households | | | |
| 2023 Estimated Households | 3,654 | 10,810 | 28,447 |
| 2028 Projected Households | 4,481 | 12,337 | 30,520 |
| 2020 Census Households | 3,061 | 9,543 | 26,633 |
| 2010 Census Households | 2,507 | 7,906 | 23,454 |
| Projected Annual Growth 2023 to 2028 | 4.5% | 2.8% | 1.5% |
| Historical Annual Growth 2010 to 2023 | 3.5% | 2.8% | 1.6% |
| Race and Ethnicity | | | |
| 2023 Estimated White | 78.2% | 82.2% | 82.2% |
| 2023 Estimated Black or African American | 13.0% | 10.0% | 9.7% |
| 2023 Estimated Asian or Pacific Islander | 2.8% | 2.0% | 1.9% |
| 2023 Estimated American Indian or Native Alaskan | 0.2% | 0.2% | 0.2% |
| 2023 Estimated Other Races | 5.8% | 5.6% | 6.0% |
| 2023 Estimated Hispanic | 5.2% | 4.8% | 5.0% |
| Income | | | |
| 2023 Estimated Average Household Income | \$154,266 | \$150,517 | \$132,536 |
| 2023 Estimated Median Household Income | \$132,085 | \$127,064 | \$108,426 |
| 2023 Estimated Per Capita Income | \$58,066 | \$55,857 | \$52,364 |
| Education (Age 25+) | | | |
| 2023 Estimated Elementary (Grade Level 0 to 8) | 1.0% | 0.8% | 1.4% |
| 2023 Estimated Some High School (Grade Level 9 to 11) | 1.9% | 1.9% | 2.0% |
| 2023 Estimated High School Graduate | 19.5% | 19.2% | 20.9% |
| 2023 Estimated Some College | 17.9% | 19.5% | 21.8% |
| 2023 Estimated Associates Degree Only | 8.3% | 8.8% | 9.4% |
| 2023 Estimated Bachelors Degree Only | 33.1% | 31.2% | 27.6% |
| 2023 Estimated Graduate Degree | 18.3% | 18.5% | 16.8% |
| Business | | | |
| 2023 Estimated Total Businesses | 258 | 686 | 2,536 |
| 2023 Estimated Total Employees | 1,284 | 4,033 | 18,679 |
| 2023 Estimated Employee Population per Business | 5.0 | 5.9 | 7.4 |
| 2023 Estimated Residential Population per Business | 37.6 | 42.5 | 28.4 |

©2024, Sites USA, Chandler, Arizona, 480-491-1112 Demographic Source: Applied Geographic Solutions 11/2023, TIGER Geography - RS1

