

TARZANA FINANCIAL CENTER



***Applies to the first 6 months of a minimum 5-year lease term.**

AVAILABLE SPACE

SUITE	SQ. FT.	AVAILABLE
200	3,877 RSF	Available Now
300	5,248 RSF	Available Now

LEASE RATE

General Office Use: \$2.35 RSF, FSG

Medical Office Use: Negotiable

PROPERTY HIGHLIGHTS

- Pylon Signage Available
- Class "A" Building – Newly Renovated Building Exterior and Interior Common Areas
- Parking ±4/1,000, from \$85/mo. Unreserved
- Close Proximity to 101 Freeway & Tarzana Hospital
- Walking distance to Village Walk at Tarzana and a variety of restaurants, upscale shops, fitness studios and other amenities



For more information please contact:

Jennifer Donaldson

818.933.0347

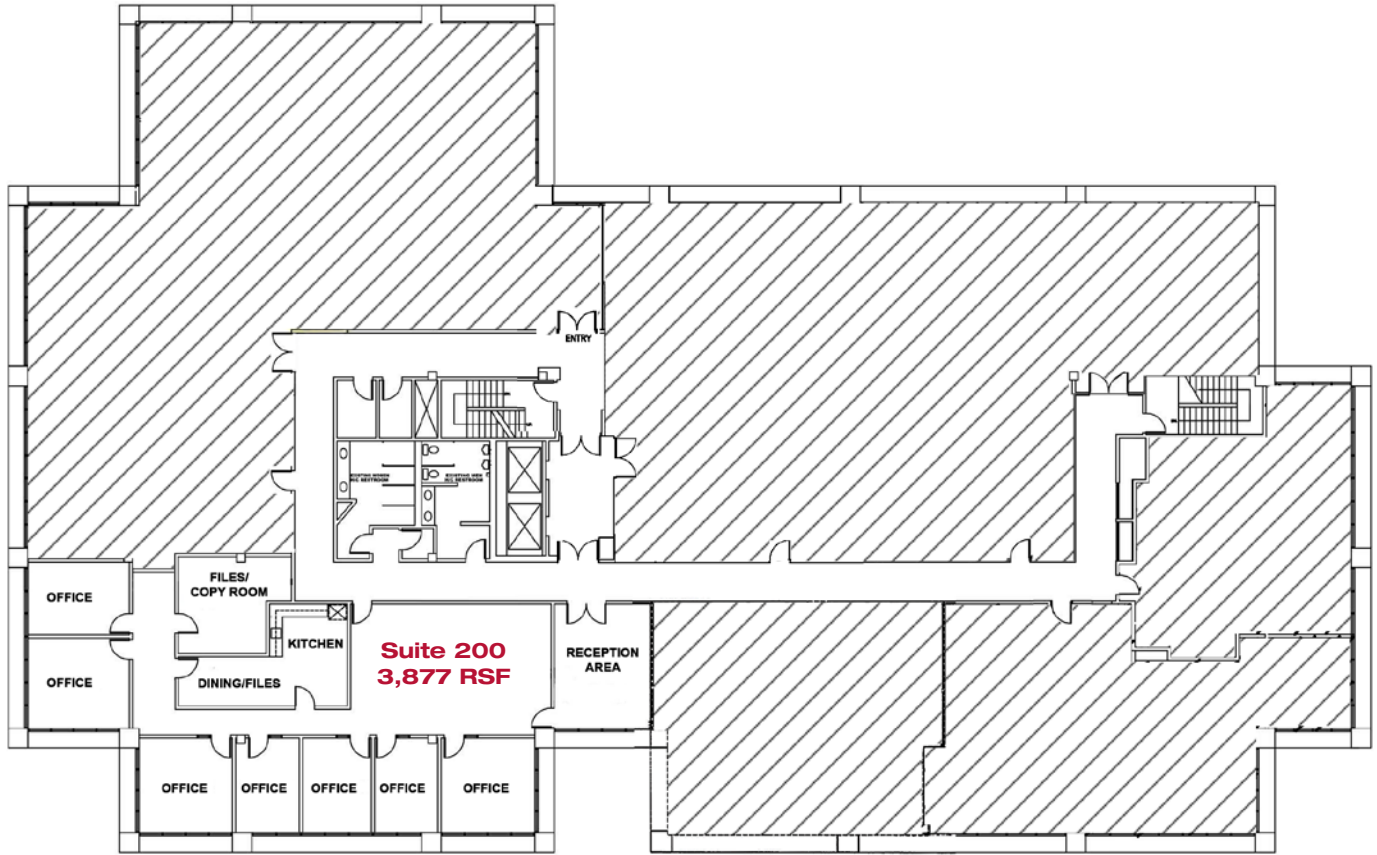
jdonaldson@lee-re.com

DRE #01317737

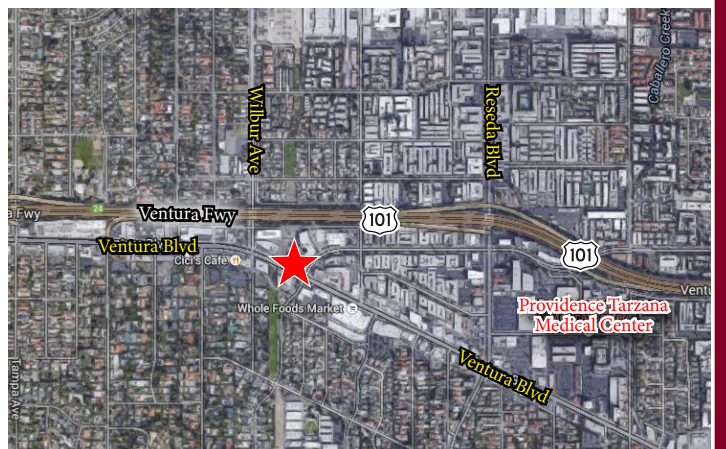


All information furnished regarding the property is from sources deemed reliable, but no warranty or representation is made as to the accuracy thereof. This information is submitted subject to errors, omissions, change of price or terms, prior sale or lease, or withdrawal without notice. No liability of any kind is to be imposed on the broker herein.

FLOOR PLAN

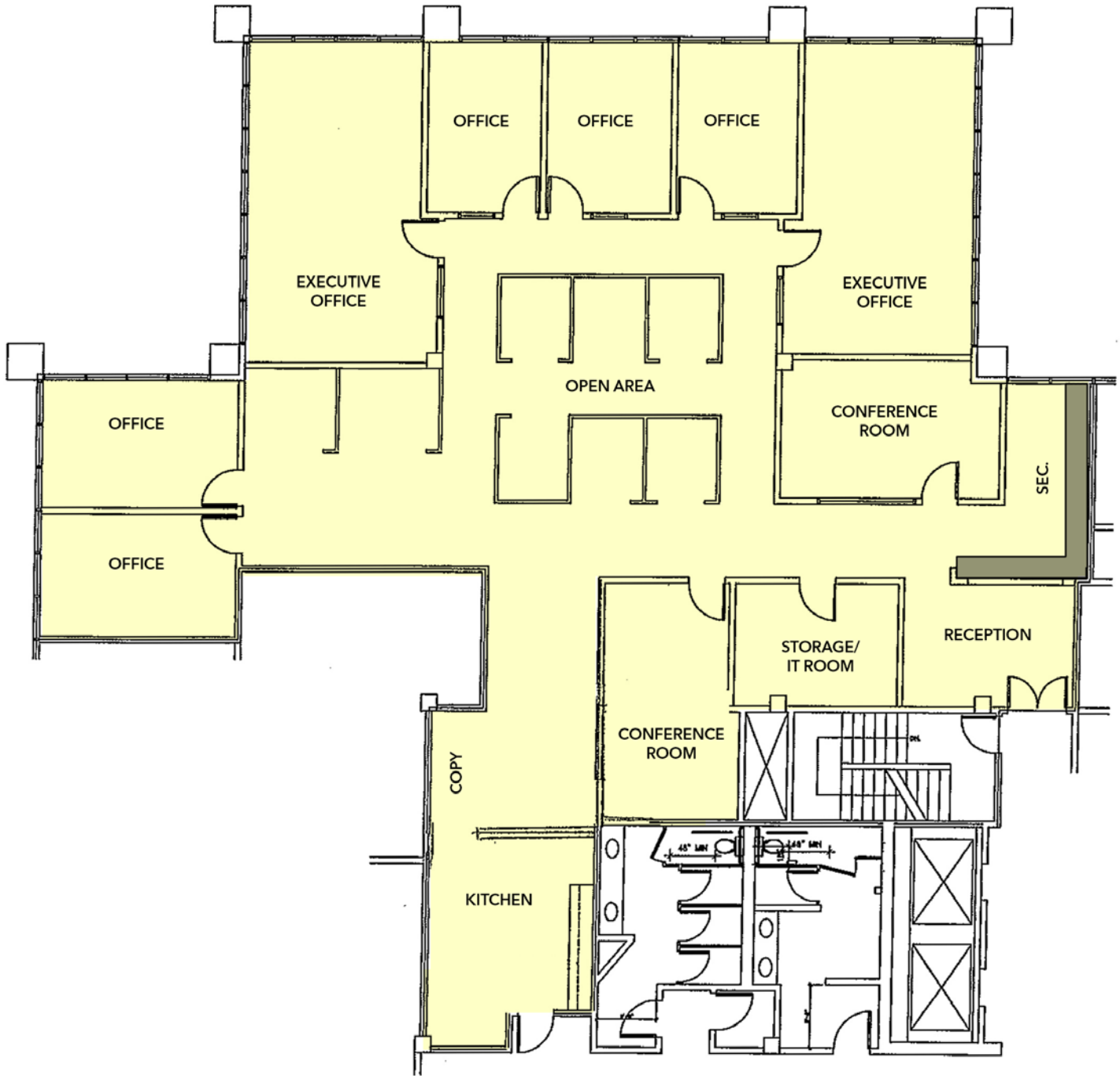


*Not to Scale



FLOOR PLAN

Suite 300 • 5,248 RSF



*Not to Scale

COMMON AREAS NEWLY RENOVATED



AMENITIES MAP



For more information please contact:

Jennifer Donaldson
818.933.0347
jdonaldson@lee-re.com
DRE #01317737



Lee & Associates® - LA North/Ventura, Inc. • CID #01191898
 A Member of the Lee & Associates® Group of Companies
 15060 Ventura Blvd., Suite 100 • Sherman Oaks, CA 91403
 P:818.986.9800 F:818.783.9260 • www.leeanorth.com

All information furnished regarding the property is from sources deemed reliable, but no warranty or representation is made as to the accuracy thereof. This information is submitted subject to errors, omissions, change of price or terms, prior sale or lease, or withdrawal without notice. No liability of any kind is to be imposed on the broker herein.