

LAB-READY FOR WHAT'S NEXT

# Kent labs

AT RESEARCH PARK

47,724 SF

FOR SALE

3065 KENT AVE, WEST LAFAYETTE

# WHERE BREAKTHROUGHS ARE BORN

**Kent Labs at Research Park** offers a rare opportunity for life sciences and R&D users to secure lab-ready space within the highly sought-after Purdue Research Park. Located at the heart of Indiana's booming innovation ecosystem, tenants benefit from immediate access to Purdue University's collaborative research initiatives, a pipeline of world-class talent, and strategic partnerships that accelerate commercialization.

Formerly occupied by a global life sciences organization, the building is preconfigured to support chemistry, analytical and process development workflows, helping new users accelerate occupancy timelines while retaining flexibility for future lab evolution. Combining this infrastructure with proximity to critical resources along the I-65 corridor, Kent Labs positions companies to grow, innovate, and thrive in one of the nation's emerging markets for life science and advanced manufacturing.



## PROPERTY HIGHLIGHTS

- 47,724 RSF of lab-ready R&D space
- Existing lab HVAC, chemical waste handling, bulk gas tank pad, & backup power
- Two floors | 23,862 SF floor plates
- Located in Purdue Research Park with direct access to university talent & research
- 80/20 R&D lab to office space ratio
- Great proximity to I-65 Corridor, an emerging national hub for advanced manufacturing & biotech
- Purpose-built for chemistry, analytical, and process development
- Previously GMP-certified facility, supporting a streamlined path to requalification
- Convertible lab infrastructure supporting wet lab adaptation

### LOGISTICS & OPERATIONS

#### PARKING

Approximately 150 surface parking spaces

#### LOADING

Exterior dock lift for equipment and material handling

#### VERTICAL TRANSPORT

One dual-rated passenger/freight elevator

#### STORAGE & SUPPORT

Fire-rated storage areas; dedicated lab supply & chemical storage rooms



# BUILDING INFORMATION



## SAFETY, CONTROLS & COMPLIANCE

- Emergency safety showers and eyewash stations installed
- Previously GMP-certified facility

Fire Protection	Fully sprinklered facility
Life Safety	Emergency lighting and exits compliant with NFPA standards
Hazard Monitoring	Oxygen depletion sensors in select rooms
Security	Badge-access system controlling building and lab entry
Environmental Compliance	Facility previously operated under active laboratory permits
Building Management	Partial Building Management System (BMS) in place

## MECHANICAL/HVAC

- Active preventative maintenance program in place
- This decentralized, zoned approach supports flexible lab layouts and varying internal heat loads typical of chemistry and analytical R&D operations
- Dedicated systems serving labs, offices, and critical environments
- Dedicated exhaust systems for individual fume hoods

System Design	Approximately 24 independently zoned HVAC units
Ventilation	Laboratory areas designed for 6–8 air changes per hour (ACH)
Environmental Control	Temperature and humidity control throughout lab areas
Critical Cooling	Continuous (24/7) cooling capability serving analytical labs and IT/server rooms
Equipment Vintage	Majority of HVAC systems installed 2019–2022

## ELECTRICAL

Available Capacity	Approximately 1,873 kVA
Total Amperage	Approximately 5,200 amps
Service Voltage	120/208V, 3-phase
Redundancy	Single utility feed
Backup Power	On-site Generac emergency generator (estimated 150–250 kW; details available during diligence)
UPS Infrastructure	Panels, pathways, and infrastructure remain in place for future UPS installation

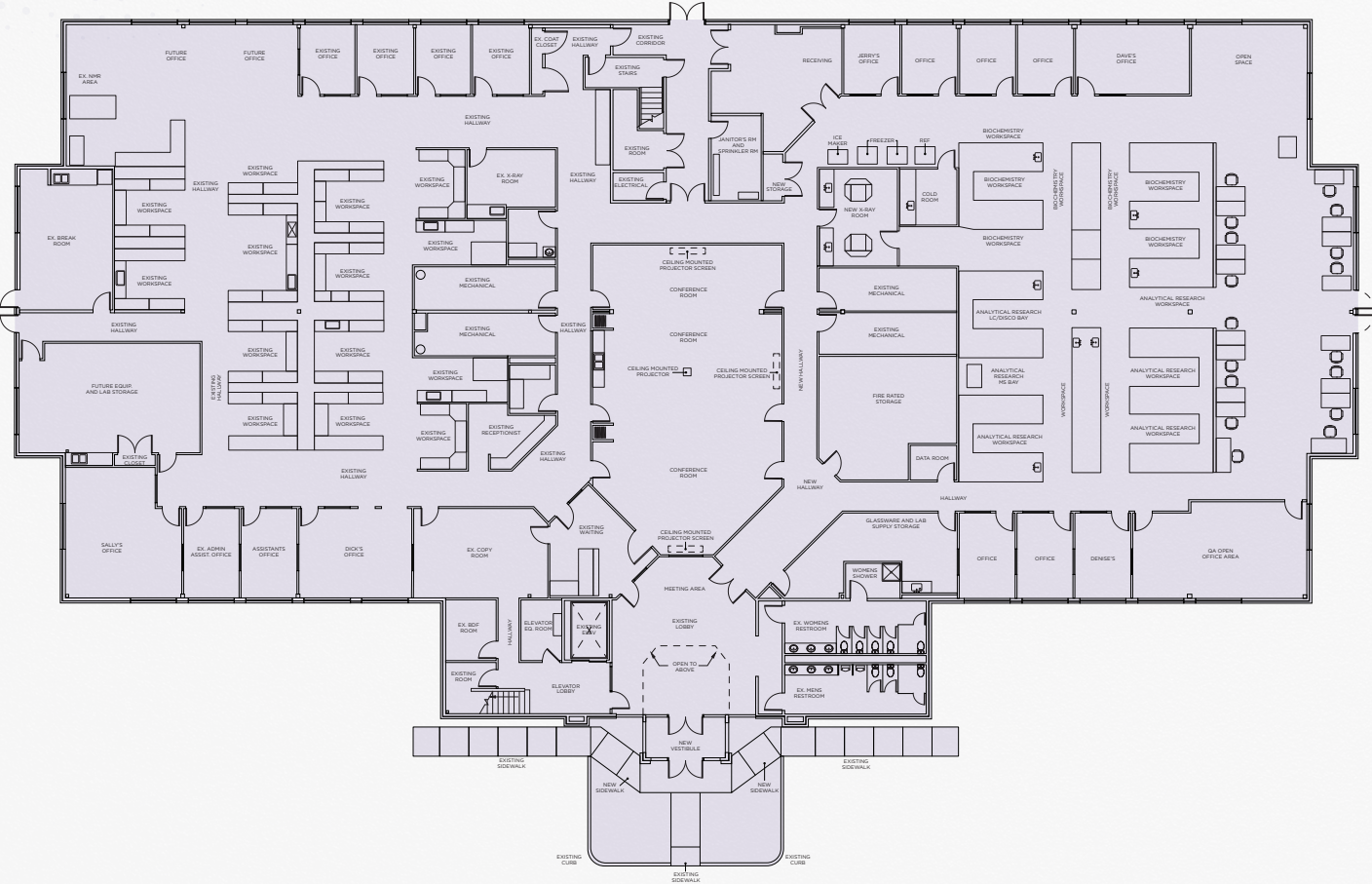
## SUPPORT SPACES



## PLUMBING & PROCESS UTILITIES

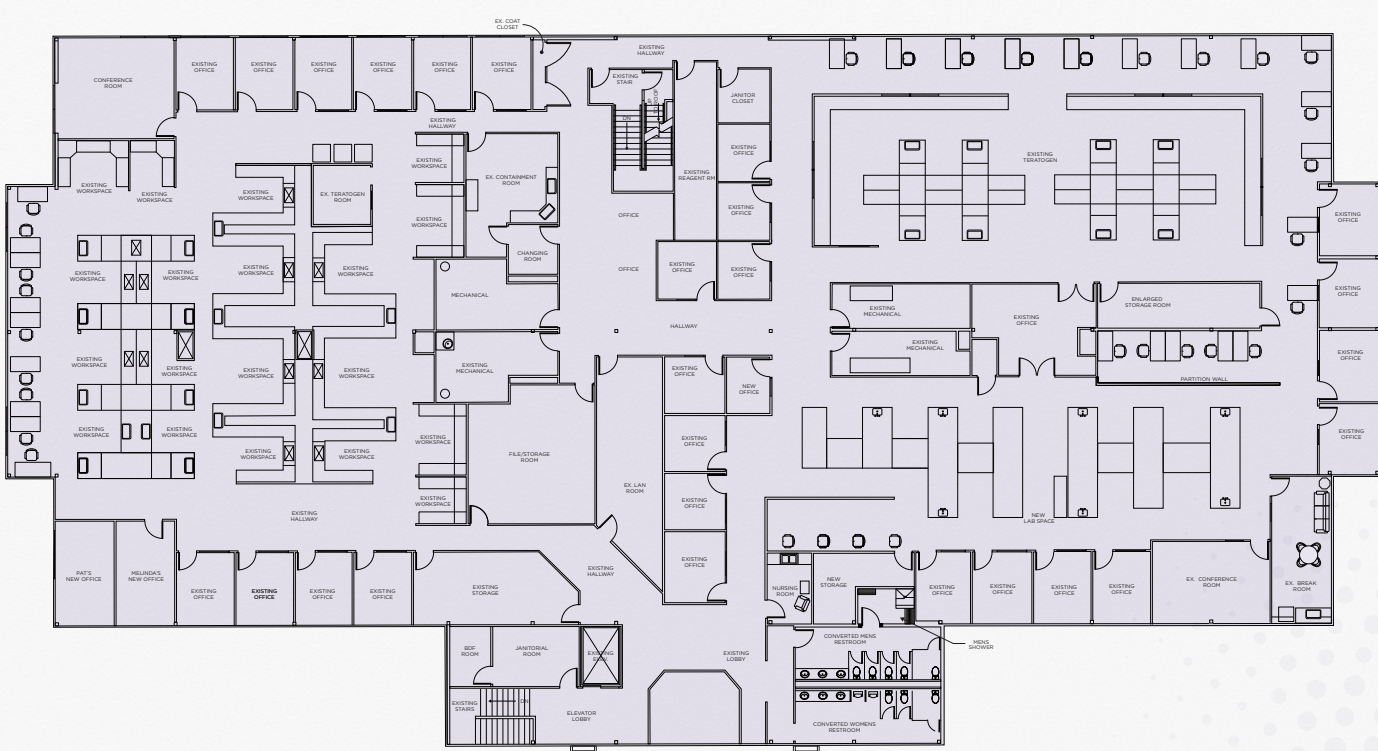
DI Water	Yes
Compressed Air	Yes
Water Supply	Municipal water at approx. 90 psi
Bulk Gas Capability	On-site bulk tank pad supporting nitrogen/CO <sub>2</sub>
Gas Distribution	Natural gas provided for comfort heating; specialty process gas distribution can be added as required

# FLOOR PLANS DESIGNED FOR DISCOVERY



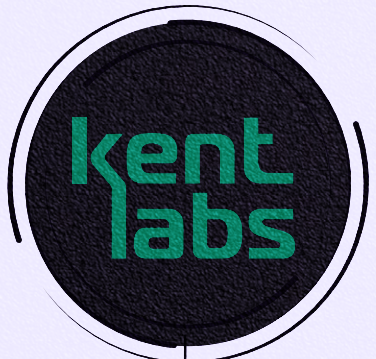
1ST FLOOR

— 23,862 SF



2ND FLOOR

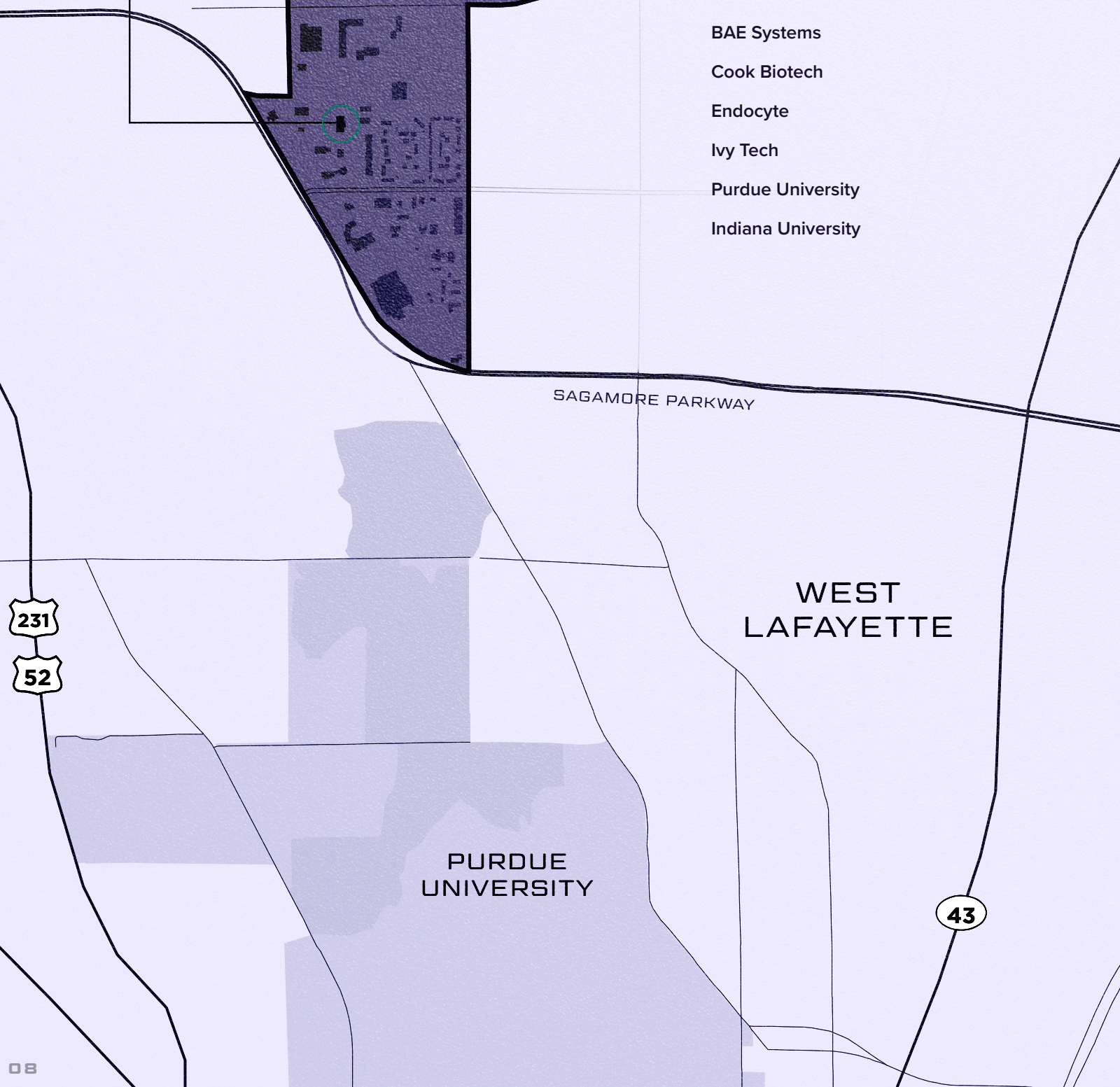
— 23,862 SF



## PURDUE RESEARCH PARK

### MAJOR COMPANIES & INSTITUTIONS

- Rolls Royce
- Schweitzer Engineering Laboratories (SEL)
- Analog Devices
- AstraZeneca
- BAE Systems
- Cook Biotech
- Endocyte
- Ivy Tech
- Purdue University
- Indiana University



# PURDUE RESEARCH PARK

Purdue Research Park, Indiana's first designated certified technology park, sits minutes from Purdue University and a robust roster of industry partners within West Lafayette who make up the state's largest cluster of technology-based companies. Purposefully designed to foster collaboration and spark innovation, the Park offers a dynamic environment for startups and established companies alike, who operate within a vibrant ecosystem fueled by academic excellence and entrepreneurial energy.

**#1**  
Best Place for Career Opportunities, Smart Asset, 2022

**100+**  
Companies

**1ST**  
Technology Park in Indiana Designated Certified

**725**  
Total Acres

**327,000 SQ. FT.**  
of Business Incubation Space

**#1**  
Best School District in Indiana

**TOP 10**  
Most Innovative University in America (Purdue), U.S. News & World Report, 2024

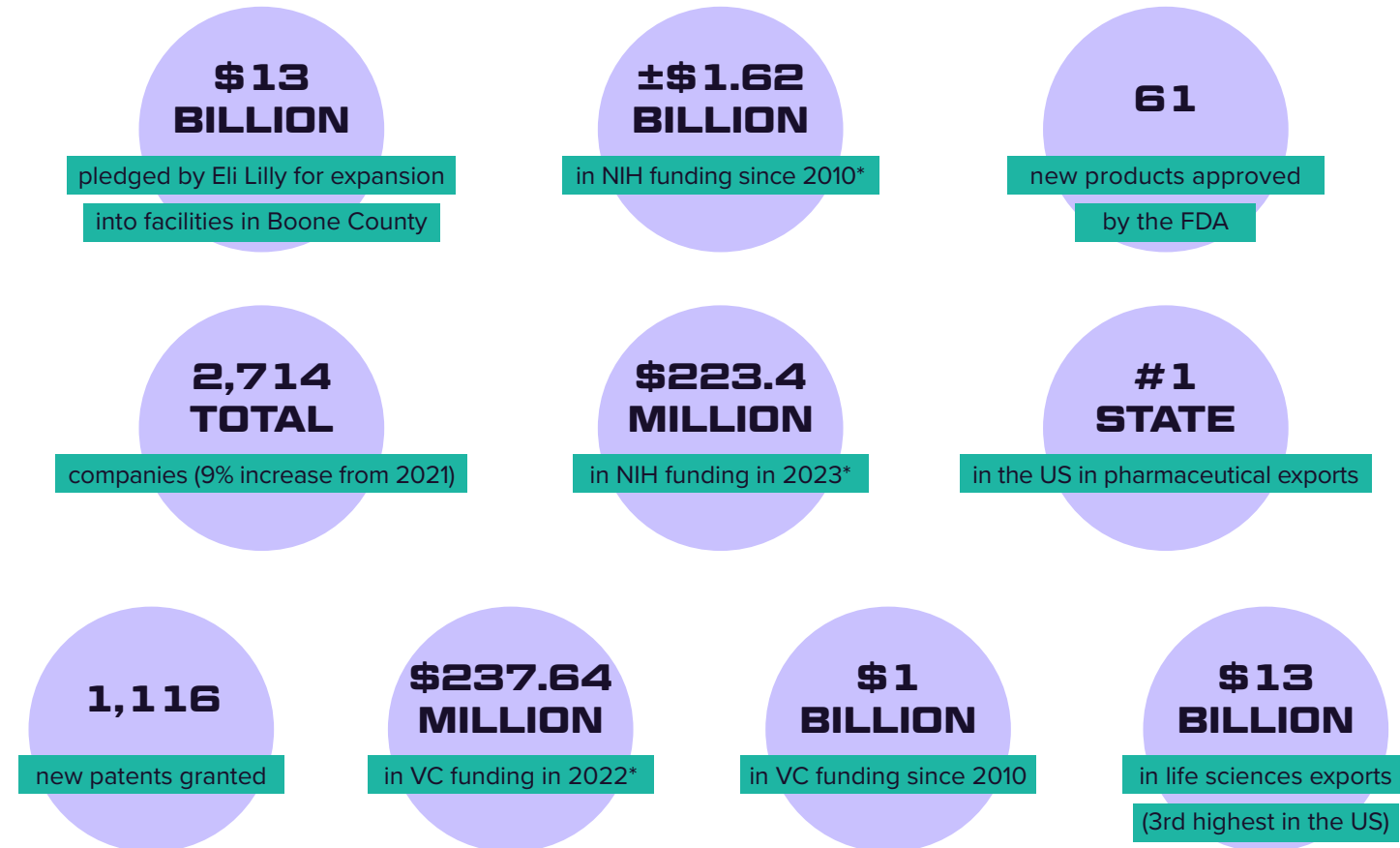
**226**  
Startups Created with Purdue IP Since 2011

# THE EPICENTER OF MIDWEST INNOVATION

Stretching nearly 100 miles from Purdue University, through the Indianapolis MDA, to Indiana University in Bloomington, Indiana's I-65 Corridor has rapidly emerged as a hotspot for advanced manufacturing, life sciences and supporting industries that anchor a dynamic Midwest ecosystem and help fuel the region's next wave of economic momentum.

Recognized by the U.S. Dept. of Commerce as one of just 31 federal technology hubs, Indiana is a national leader in life sciences and biotech innovation —**ranking top three in pharmaceutical, medical device and bioscience exports for the past decade**—supported by strong venture capital investments and a deep network of research institutions driving continued innovation and growth.

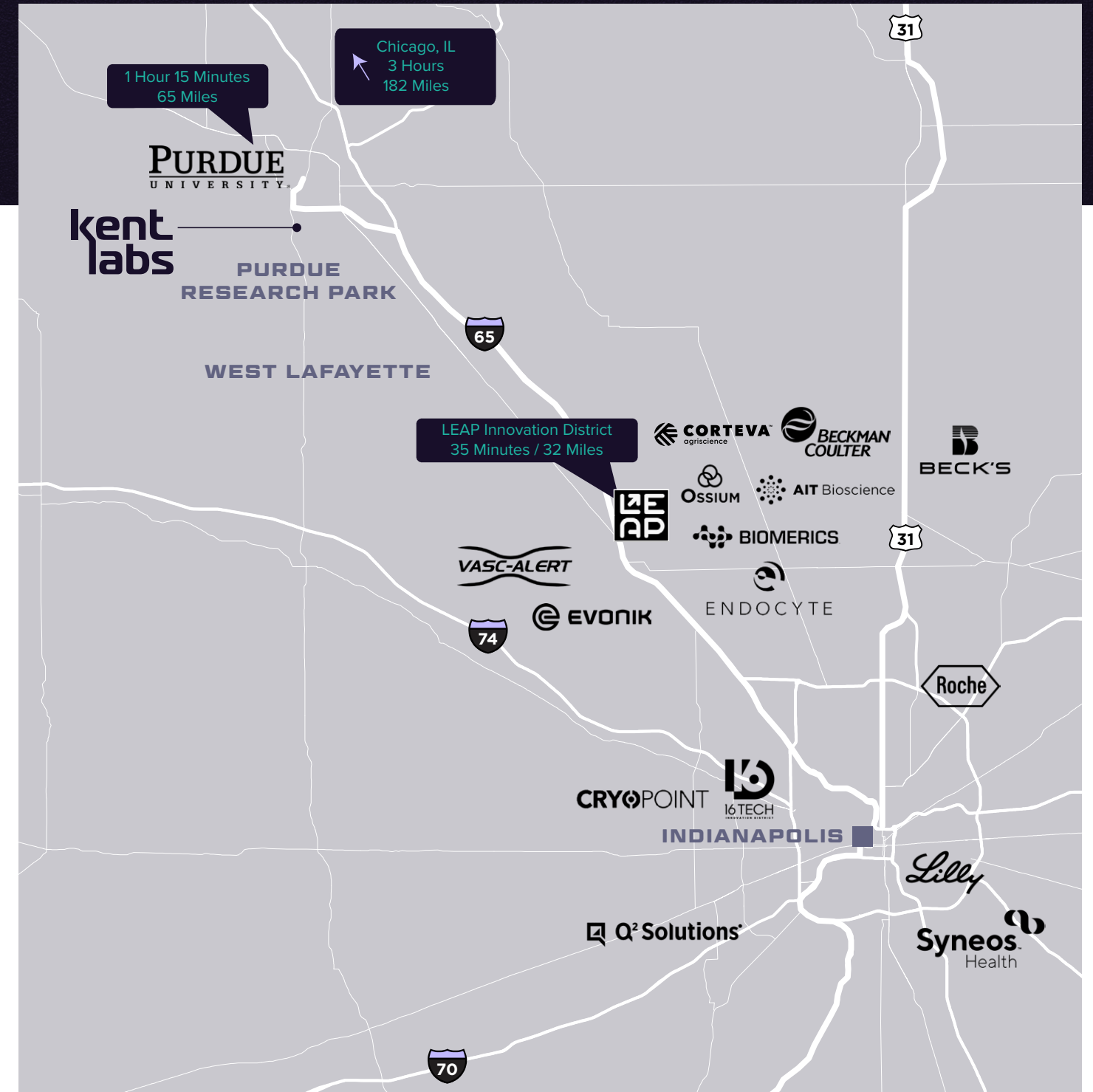
## Indiana Life Science by the Numbers



\*Within Lafayette, Indianapolis, and Bloomington MSAs

## INDUSTRY LEADERS

CORTEVA	BECKMAN COULTER	EVONIK	ELI LILLY
ELANCO	CATALENT	CUMMINS	ROCHE
CATERPILLAR	COOK MEDICAL	SIMTRA BIOPHARMA SOLUTIONS	



# Kent Labs

AT RESEARCH PARK

For information, please contact:

**JON OWENS**

+1 317 639 0447

[jon.owens@cushwake.com](mailto:jon.owens@cushwake.com)

**JOSHUA GRAHAM**

+1 317 639 0491

[joshua.graham@cushwake.com](mailto:joshua.graham@cushwake.com)

**LUKE LONNEMAN**

+1 317 352 5419

[luke.lonneman@cushwake.com](mailto:luke.lonneman@cushwake.com)

---

©2026 Cushman & Wakefield. All rights reserved. The information contained in this communication is strictly confidential. This information has been obtained from sources believed to be reliable but has not been verified. NO WARRANTY OR REPRESENTATION, EXPRESS OR IMPLIED, IS MADE AS TO THE CONDITION OF THE PROPERTY (OR PROPERTIES) REFERENCED HEREIN OR AS TO THE ACCURACY OR COMPLETENESS OF THE INFORMATION CONTAINED HEREIN, AND SAME IS SUBMITTED SUBJECT TO ERRORS, OMISSIONS, CHANGE OF PRICE, RENTAL OR OTHER CONDITIONS, WITHDRAWAL WITHOUT NOTICE, AND TO ANY SPECIAL LISTING CONDITIONS IMPOSED BY THE PROPERTY OWNER(S). ANY PROJECTIONS, OPINIONS OR ESTIMATES ARE SUBJECT TO UNCERTAINTY AND DO NOT SIGNIFY CURRENT OR FUTURE PROPERTY PERFORMANCE. COE-PM-CENTRAL- 01/14/26

