

430 ESSA

Ground Floor Commercial Units For Sale in Barrie



CBRE

Commercial Opportunity for Sale

Address: 430 Essa Road, Barrie
Parking: 39 Commercial Visitors Underground Parking Spots
Available: Immediate

Ground Floor Retail

Unit	Total Size	Price / Sq. Ft.	Total Price
Retail Unit 1	1,498 Sq. Ft.	\$550 / Sq. Ft.	\$823,900
Retail 1B	1,499 Sq. Ft.	SOLD \$600 / Sq. Ft.	\$899,400
Retail 1C	1,457 Sq. Ft.	SOLD \$600 / Sq. Ft.	\$874,200
Retail Unit 7	1,490 Sq. Ft.	\$550 / Sq. Ft.	\$819,500

Property Highlights

On behalf of One Urban, CBRE Limited is pleased to offer newly built ground floor condo commercial units at 430 Essa Road in Barrie.

The Offering is comprised of a total of 5,944 Sq. Ft. of ground floor commercial area which is divided into 4 units fronting directly onto Essa Road and Veterans Drive. The project also boasts 71 residential units that are currently occupied. Added benefits include 39 commercial visitor underground parking spots.

This new condo development is in a prime area, surrounded by numerous amenities, including Shoppers Drug Mart plaza and other national retailers which draws high foot traffic, making it an ideal spot for businesses. The property allows for a wide range of commercial uses, including medical establishments, retail stores, food & beverage outlets, service-based businesses, and more.



Investment Highlights



Nestled within the established charm of an exclusive South Barrie address, a vibrant master-planned condominium community is rising in the City of Barrie's most coveted neighbourhood.



Constructed by One Urban, one of Canada's leading developers with an executive team of over 30 years of experience in the industry.

This high density mixed-use condominium development is well positioned to attract residents, commercial tenants and customers for years to come.



This commercial site offers exceptional viability and accessibility due its high daily traffic count of approximately 10,112 cars. This high traffic exposure will appeal to tenants looking to serve the condo residents and surrounding area.

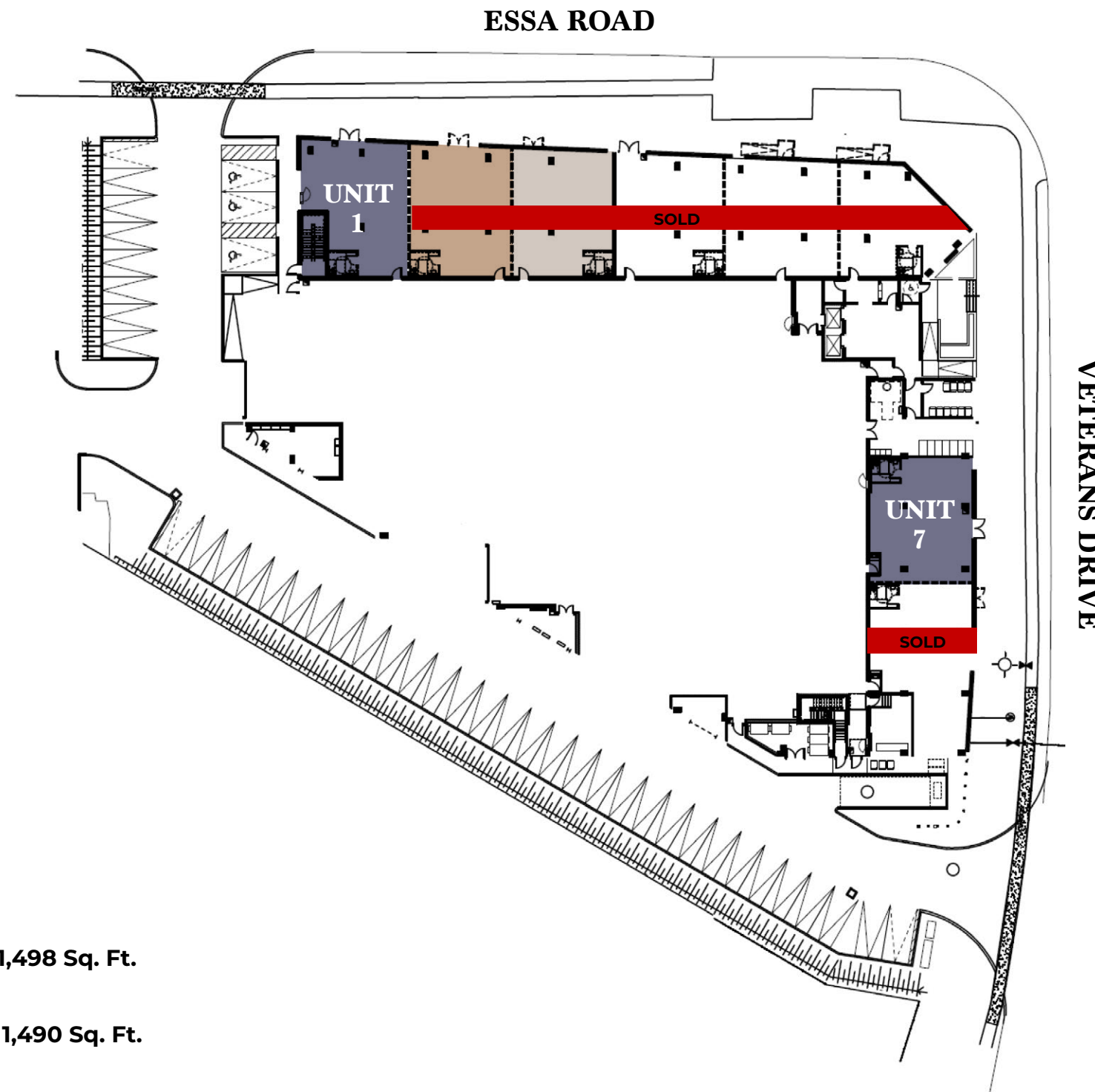


This site benefits from its location in a mature residential node which is expected to experience robust population growth of over 30% in the 5 years.



This significant demographic expansion implies increased consumer demand, offering great potential for business growth and profitability.



Retail Plan | Units 1 & 7



Available Units

-  Retail Unit 1 - **1,498 Sq. Ft.**
-  Retail Unit 7 - **1,490 Sq. Ft.**

CLICK TO VIEW
VIRTUAL TOUR
UNIT 1

CLICK TO VIEW
VIRTUAL TOUR
UNIT 7

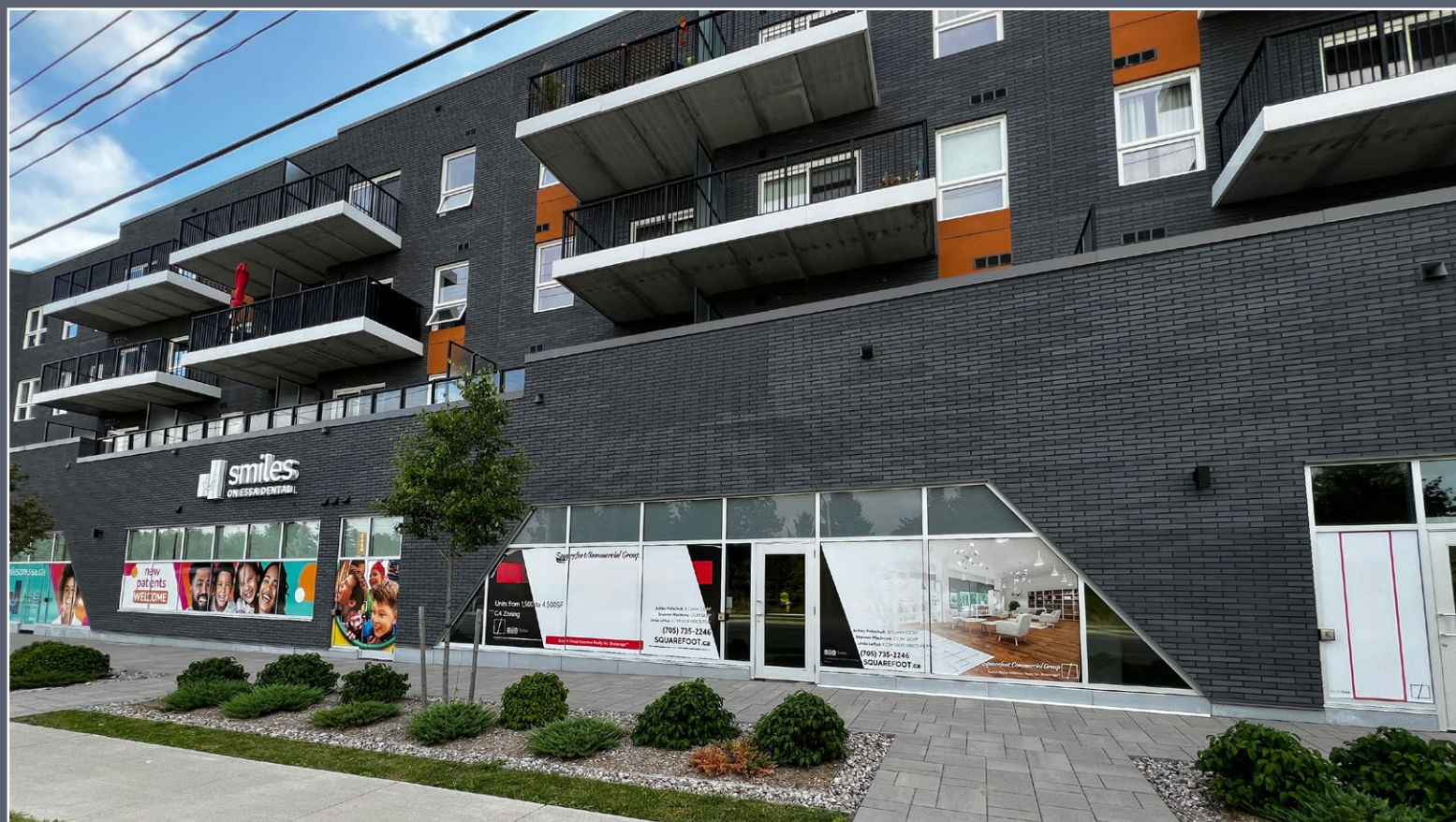
THE NEIGHBOURHOOD



SUBJECT SITE



EXTERIOR PICTURES



INTERIOR PICTURES



Landmarks & Amenities

1. Barrie Waterfront
2. Galaxy Cinemas
3. Innisbrook Golf Course
4. National Pines Golf Club
5. The Wilds at Cedar Valley Golf Course
6. Pet Valu
7. Rexall Pharma Plus
8. Canadian Music Academy Barrie
9. Fairfield Inn & Suites by Marriott Barrie
10. Hampton Inn & Suites by Hilton Barrie
11. Holly Community Centre
12. Centennial Park
13. Mapleton Park
14. Heritage Park
15. RBC Royal Bank
16. TD Canada Trust
17. Snow Valley Ski Resort

Restaurants & Cafes

1. Starbucks
2. Tim Hortons
3. Burger's Priest
4. Cora's
5. Country Kitchen
6. Groovy Tuesday's Bistro
7. Urban Dish Grill & Wine Bar
8. Simmering Kettle
9. Canvas and Cabernet
10. Mandarin
11. Painter's Hall Bistro

Shopping & Grocery

1. Goodness Me! Natural Food Market
2. M&M Food Market
3. Costco Wholesale
4. Food Basics
5. FreshCo
6. Sobeyes
7. Park Place
8. SmartCentres Barrie North
9. Shoppers Drug Mart

Education

1. Georgian College
2. Innisdale Secondary School
3. Bear Creek Secondary School
4. Unity Christian High School
5. St. Joan of Arc Catholic High School
6. Trillium Woods Elementary School
7. St. Bernadette Elementary School
8. St. Nicholas Catholic School
9. Ardagh Bluffs Public School
10. Holly Meadows Elementary School
11. St. John Vianney Catholic School
12. Mapleview Heights Elementary School
13. Saint Michael the Archangel Catholic Elementary School

- Royal Victoria Regional Health Centre
- Fire Stations



TRAFFIC COUNT

10,122
Cars Per Day
Ferndale Drive S



FOR MORE INFORMATION, PLEASE CONTACT:

Nicholas Regan*

Senior Sales Associate
416 801 1658
nicholas.regan@cbre.com

Matthew Pieszchala*

Vice President
905 234 0376
matthew.pieszchala@cbre.com

Adam Occhipinti*

Vice President
416 798 6265
adam.occhipinti@cbre.com

Karlyn Knafo*

Associate Vice President
905 234 0381
karlyn.knafo@cbre.com

CBRE

CBRE Limited, Real Estate Brokerage | 5935 Airport Road | Suite 700 | Mississauga, ON | L4V 1W5 *Sales Representative

This disclaimer shall apply to CBRE Limited, Real Estate Brokerage, and to all other divisions of the Corporation ("CBRE"). The information set out herein, including, without limitation, any projections, images, opinions, assumptions and estimates obtained from third parties (the "Information") has not been verified by CBRE, and CBRE does not represent, warrant or guarantee the accuracy, correctness and completeness of the Information. CBRE does not accept or assume any responsibility or liability, direct or consequential, for the Information or the recipient's reliance upon the Information. The recipient of the Information should take such steps as the recipient may deem necessary to verify the Information prior to placing any reliance upon the Information. The Information may change and any property described in the Information may be withdrawn from the market at any time without notice or obligation to the recipient from CBRE. CBRE and the CBRE logo are the service marks of CBRE Limited and/or its affiliated or related companies in other countries. All other marks displayed on this document are the property of their respective owners. All Rights Reserved. Mapping Sources: Canadian Mapping Services canadamapping@cbre.com; DMTI Spatial, Environics Analytics, Microsoft Bing, Google Earth