



FOR LEASE | MEDICAL SPACE

LAKESIDE TWO PROFESSIONAL CENTER

17030 LAKESIDE HILLS PLAZA | OMAHA NE

Healthpeak® | DOC LISTED NYSE

 PJ MORGAN
REAL ESTATE

Information furnished is from sources deemed reliable, but is not guaranteed by PJ Morgan Real Estate, or its agents and is subject to change, corrections, errors, omissions, prior sales or withdrawal, without notice.



PROPERTY DETAILS

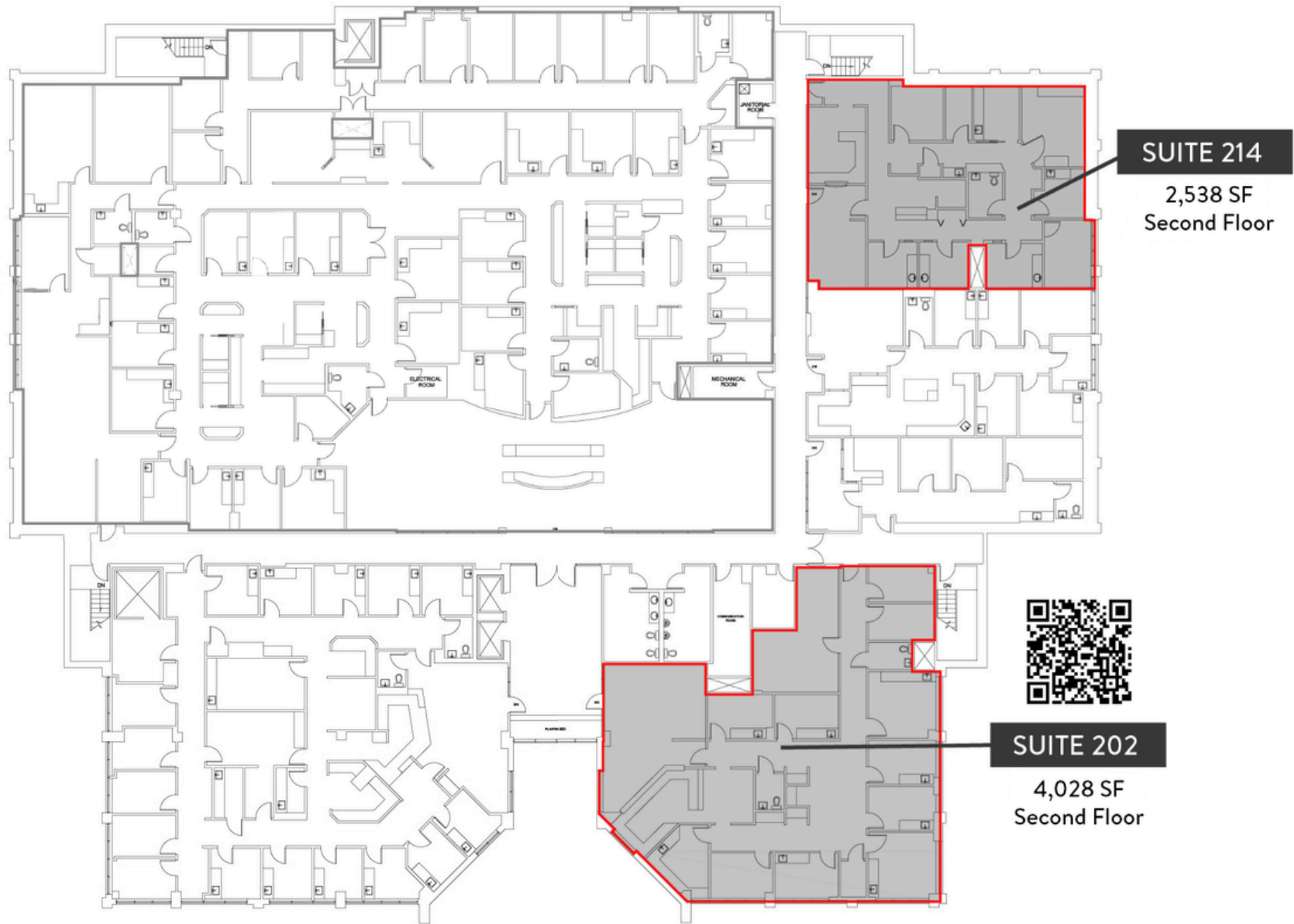
Lease Rate	Call for Rate
Year Built	2000
Total Building Area	71,616 SF

AVAILABLE

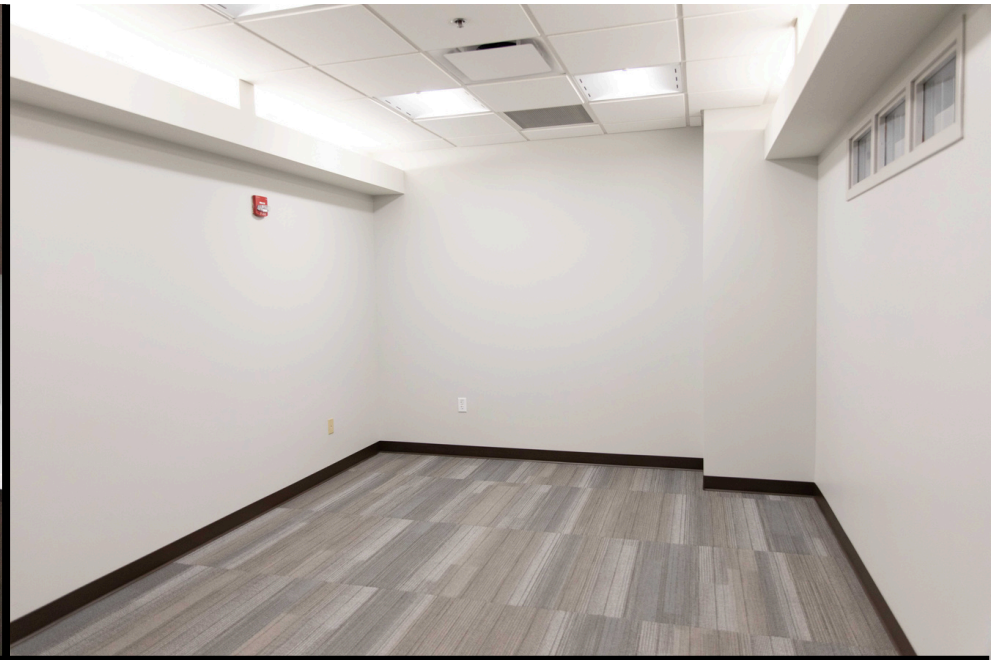
Suite 202	4,028 SF
Suite 214	2,538 SF
Max Contiguous	9,535 SF

DESCRIPTION

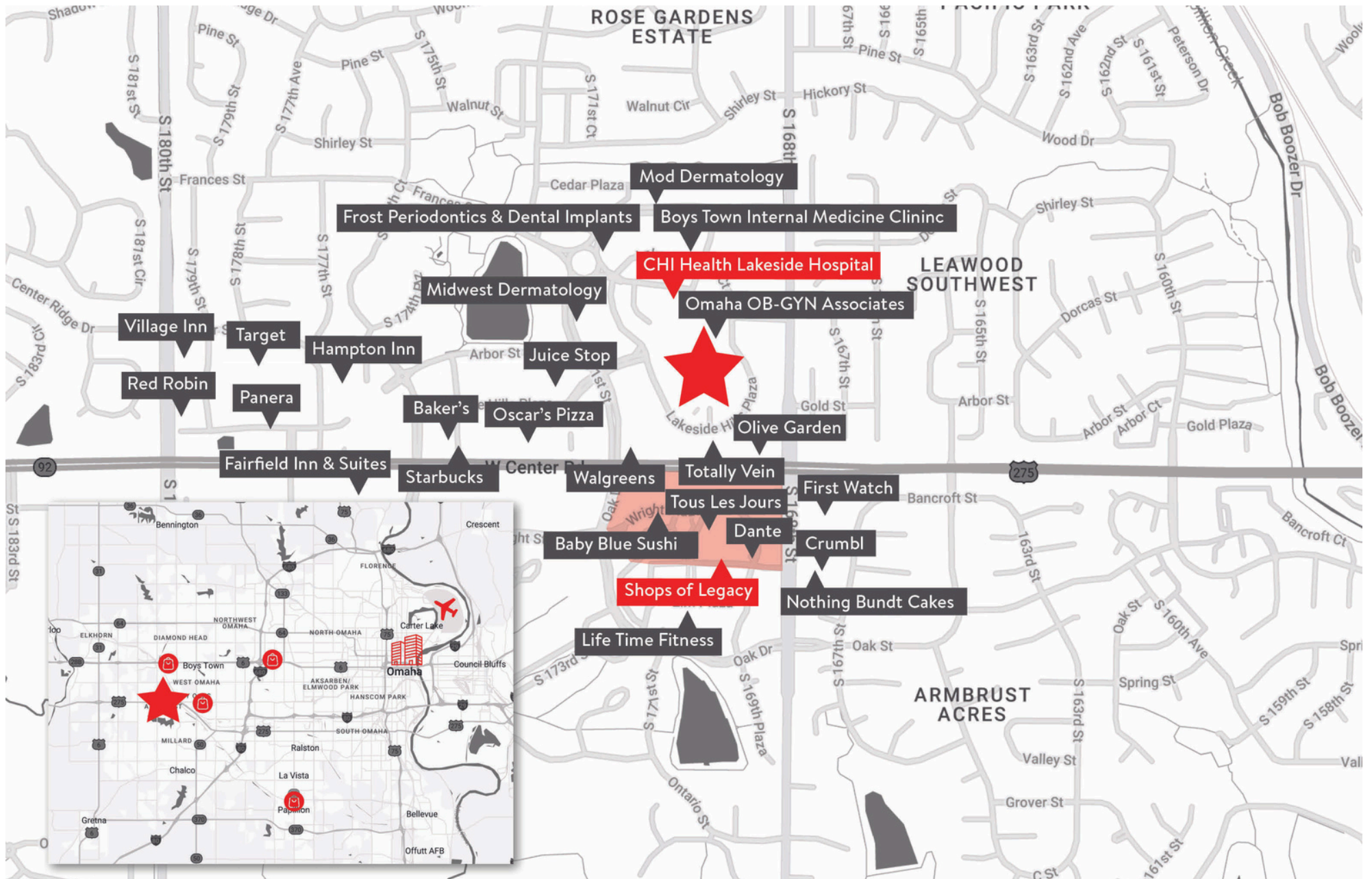
Directly connected to the CHI Health Lakeside Hospital with a covered drop-off area, this prime outpatient medial building is locally managed by the owner. Specialities include an imaging center, advanced wound care, ENT, audiology, internal medicine, asthma care, immunology care, neurosurgery, and an ambulatory surgical center. Located 15 minutes from downtown Omaha, the property is within easy walking or driving distance to plenty of retail and restaurant options. Locally and professionally managed by Owner.



FLOOR PLAN



SUITE 214 PHOTOS



LOCATION

Our local, experienced on-campus management team maintains an on-site office where tenants can stop by anytime during business hours.

Property management oversees many events great for networking including:

- Earth Day
- Giving Tuesday
- Ice Cream Social
- Fire Safety Events

Property management prioritizes tenant satisfaction and wellbeing, investing in several ways of collecting and addressing tenant feedback, including:

- Kingsley Survey
- In-Office Visits
- Work Order System



Healthpeak[®] | **DOC LISTED NYSE**

PROPERTY MANAGEMENT



Call, email or text us today for leasing information!



RYAN ELLIS
rellis@pjmorgan.com
402-578-7536



DERICK LEWIN
dlewin@pjmorgan.com
402-651-1830

Healthpeak® | **DOC LISTED NYSE**

PJ MORGAN
REAL ESTATE

Information furnished is from sources deemed reliable, but is not guaranteed by PJ Morgan Real Estate, or its agents and is subject to change, corrections, errors, omissions, prior sales or withdrawal, without notice.