

# Silverbell Road

*Orion Township, MI*

- 31.55 Acres For Sale
- Located Across from GM Orion Plant
- Zoned Single Family
- Municipal Water & Sanitary
- Master Planned Office Research
- Access off of Silverbell Rd
- Close Proximity to I-75

**31.55 ACRES  
FOR SALE**

**MASTER PLANNED OFFICE RESEARCH  
UTILITIES ON SITE**

## FOR MORE INFORMATION:

Jason Capitani, SIOR, CCIM  
Managing Partner  
248.637.7684  
jcapitani@LMCap.com

248.637.9700 | LMCap.com

Information contained herein was obtained from sources deemed to be reliable but is not guaranteed. Subjects to prior sales, changes of price or withdrawal.



# Silverbell Road

Orion Township, MI

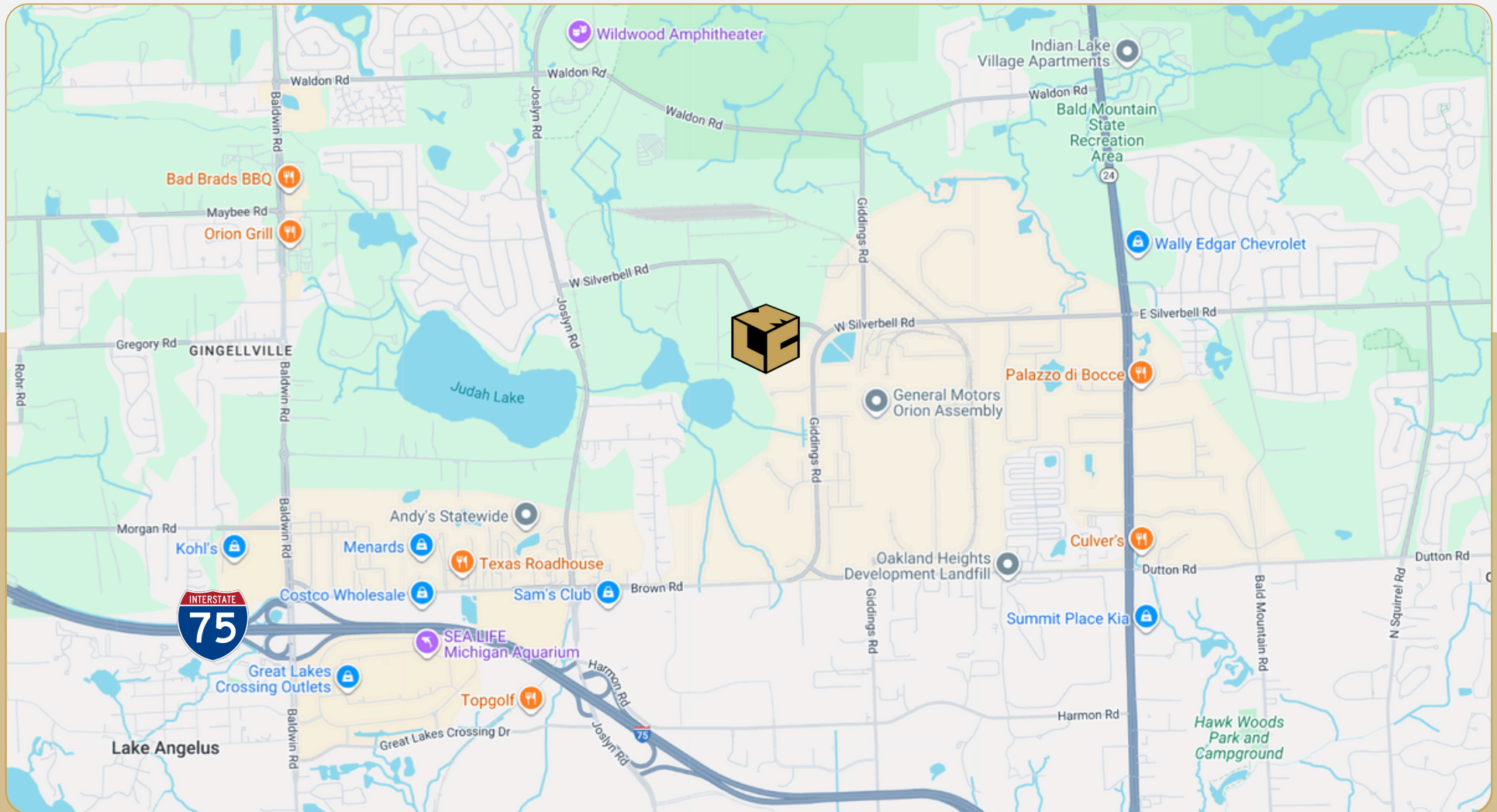


L. MASON CAPITANI

CORFAC INTERNATIONAL

CELEBRATING 60 YEARS

## Location Map:



248.637.9700 | LMCap.com

Information contained herein was obtained from sources deemed to be reliable but is not guaranteed. Subjects to prior sales, changes of price or withdrawal.

# Silverbell Road

Orion Township, MI



L. MASON CAPITANI

CORFAC INTERNATIONAL

CELEBRATING 60 YEARS

## Land Property Details:

### Details:

**Intersection:** SW Corner of Silverbell & Giddings  
**Parcel ID:** 09-34-100-007  
**Zoning:** Single Family  
**Type:** Office Research (OP)  
**Water:** City  
**Utilities:** On-Site  
**Sanitary:** On-Site  
**Storm:** On-Site  
**Acres:** 31.55  
**Frontage:** 1,093.5'  
**Depth:** 1,616.34'  
**Topography:** Rolling/Wooded

### Economic

**Sale Price:** \$2,750,000  
**Price/SF:** \$2.00  
**Price/Acre** \$87,163.23

**Additional Information:** Vacant parcel located directly across the street from the GM Orion Plant. Master planned Office Research. Utilities on site. Current access off Silverbell Rd.

# Silverbell Road

Orion Township, MI

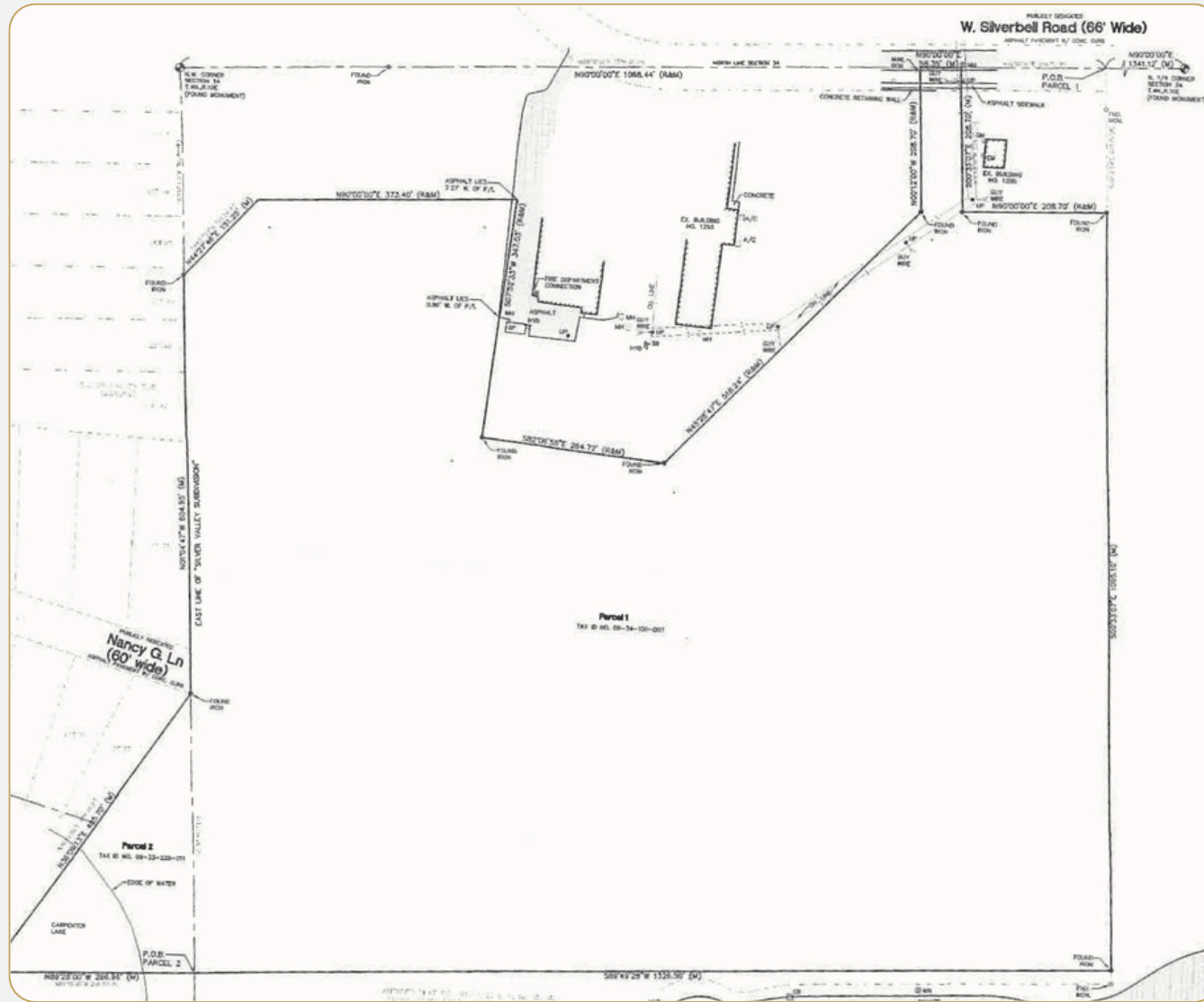


L. MASON CAPITANI

CORFAC INTERNATIONAL

CELEBRATING 60 YEARS

## Survey:



248.637.9700 | LMCap.com

Information contained herein was obtained from sources deemed to be reliable but is not guaranteed. Subjects to prior sales, changes of price or withdrawal.