

HIGH \$20S PSF

85

**MERRIMAC
STREET**
BOSTON, MA

**Multiple Floors
Available Now!**

Floor 2 (full floor) - 5,450 SF

Floor 4 - 2,684 SF



Immediate access to public transportation on MBTA Green Line, Orange Line and Commuter Rail



Steps from numerous restaurants, hotels, retail, and public parking



High ceilings & oversized windows



Abundant natural light

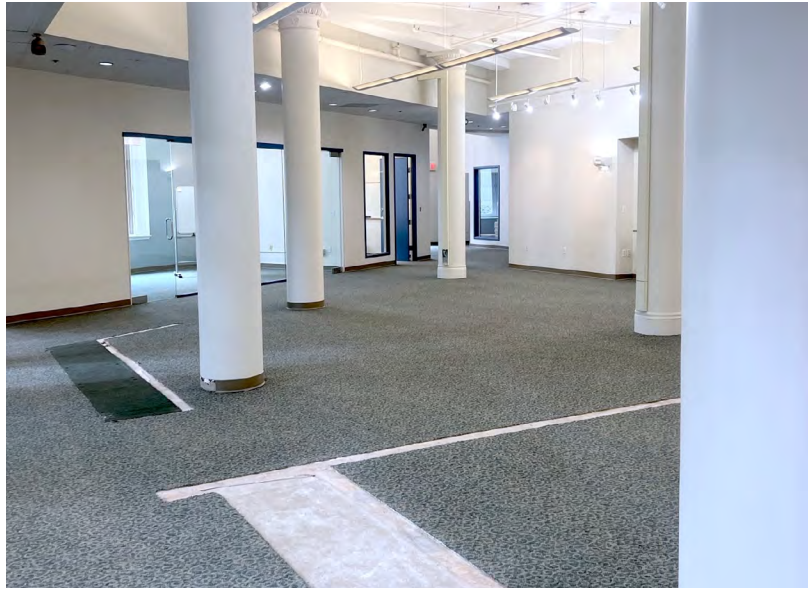


Only building in Bulfinch Triangle on the National Register of Historic Places

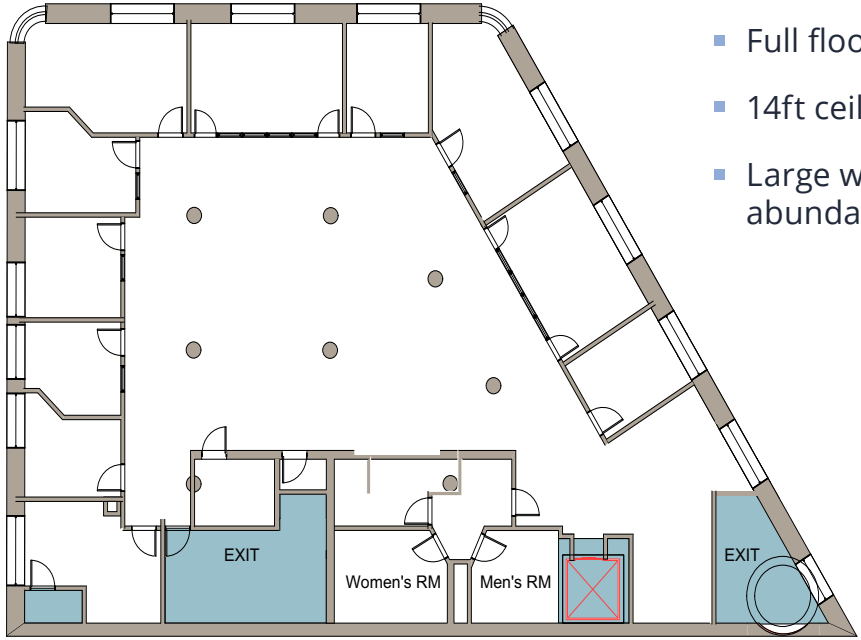
Kirk Weller, Senior Vice President
617.456.1363
kirk.weller@avisonyoung.com

Jeff Gates, Principal
617.595.6015
jeff.gates@avisonyoung.com

**AVISON
YOUNG**

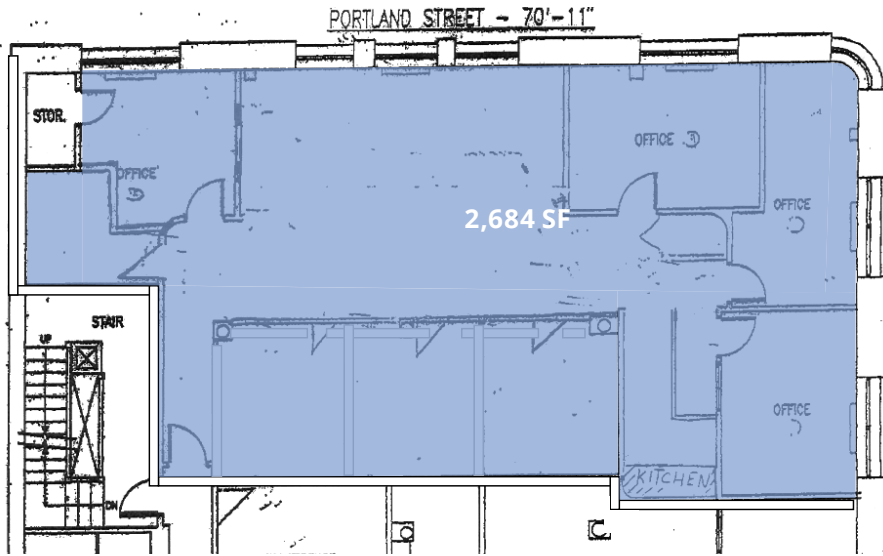


FLOOR 2 | 5,450 SF



- Full floor opportunity
- 14ft ceilings
- Large windows providing abundant natural light

FLOOR 4 | 2,684 SF





85
MERRIMAC
STREET
BOSTON, MA

For more information, please contact:

Kirk Weller, Senior Vice President
617.456.1363
kirk.weller@avisonyoung.com

Jeff Gates, Principal
617.595.6015
jeff.gates@avisonyoung.com

200 State Street, Floor 15, Boston, MA 02109

© 2026. Avison Young. Information contained herein was obtained from sources deemed reliable and, while thought to be correct, have not been verified. Avison Young does not guarantee the accuracy or completeness of the information presented, nor assumes any responsibility or liability for any errors or omissions therein. Some imagery may have been edited using AI tools for visualization purposes.

**AVISON
YOUNG**