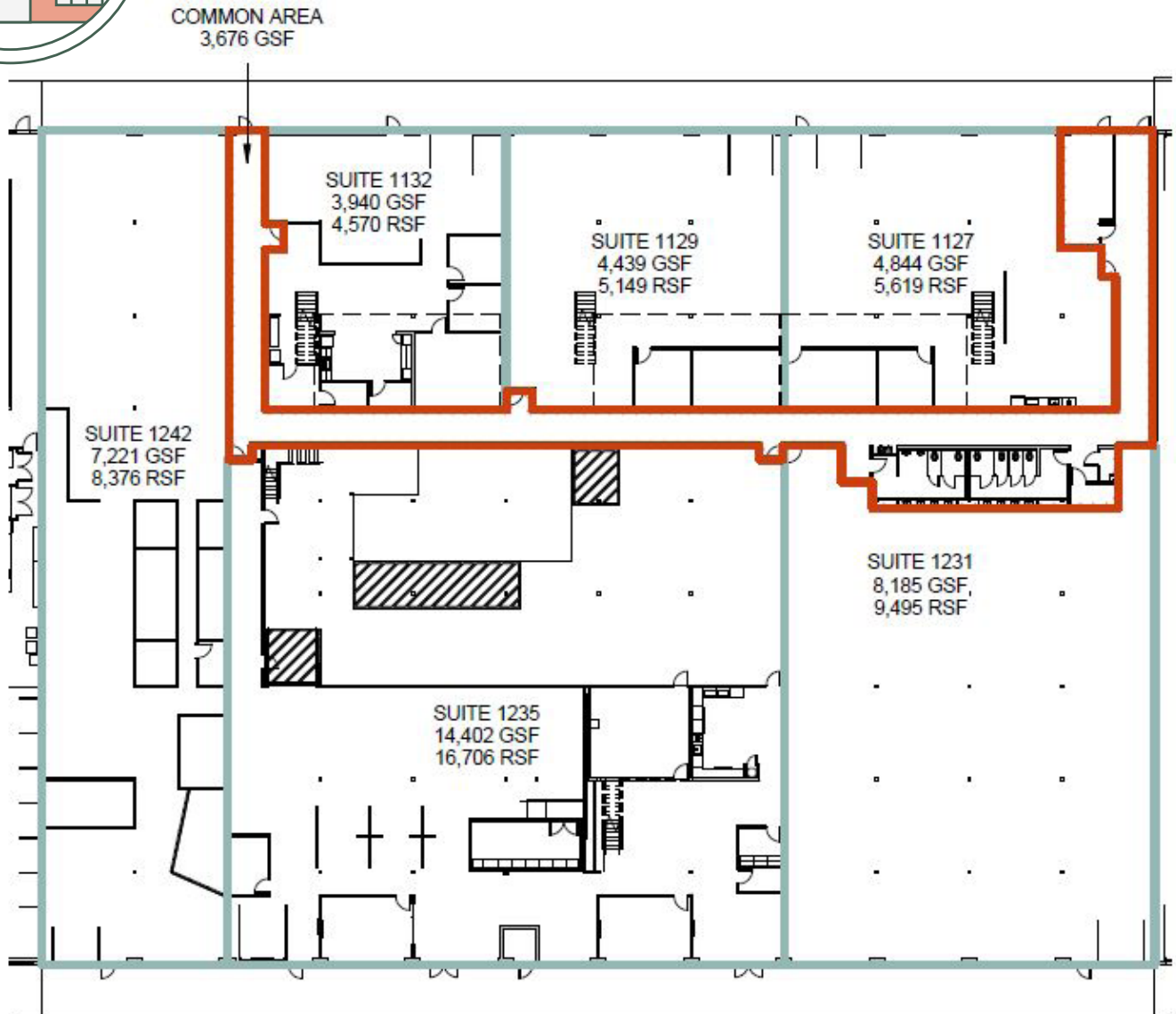




3881 N STEELE ST



BUILDING - 3881

1/32" = 1'-0"

LINE LEGEND	SITE PLAN	
<p>— TENANT SPACE</p> <p>— COMMON SPACE</p>		

For Leasing Information, Contact:

ANDREW PIEGRAS
Vice President
303.882.6591
APiegras@LPC.com

MARK DWYER
Vice President
303.877.1620
MDwyer@LPC.com

Lincoln